

PREMIER SHOPPES AT JORDAN CREEK RETAIL FOR LEASE

490 S 68th Street | West Des Moines, Iowa



OVERVIEW

Premier Shoppes at Jordan Creek is located on Mills Civic Parkway in West Des Moines at the center of the largest retail area in Iowa.

With Brookfield Properties' two million square foot Jordan Creek Town Center Super Regional Mall just to the west, this location is passed each day by the thousands of customers who shop, work, or are entertained in the immediate area.

This center is located between Jordan Creek Town Center and the major population area of Des Moines.

DEMOGRAPHICS

	5 mile	10 mile
ESRI 2025 Population	125,164	374,127
Avg. HH Income	\$140,035	\$120,513

FEATURES

- 4,812 sq ft available
- Lease Rate: Call for pricing
- Located in the heart of the primary retail corridor
- Hard corner at major intersection
- Near Jordan Creek Mall
- Surrounding retailers include Costco, Walmart, Kohl's, Trader Joe's, TJ Maxx and Sierra
- Grease trap for potential restaurants
- Nearby corporate offices of Wells Fargo Home Mortgage, Sammons Financial, Athene and IMT

FOR MORE INFORMATION:

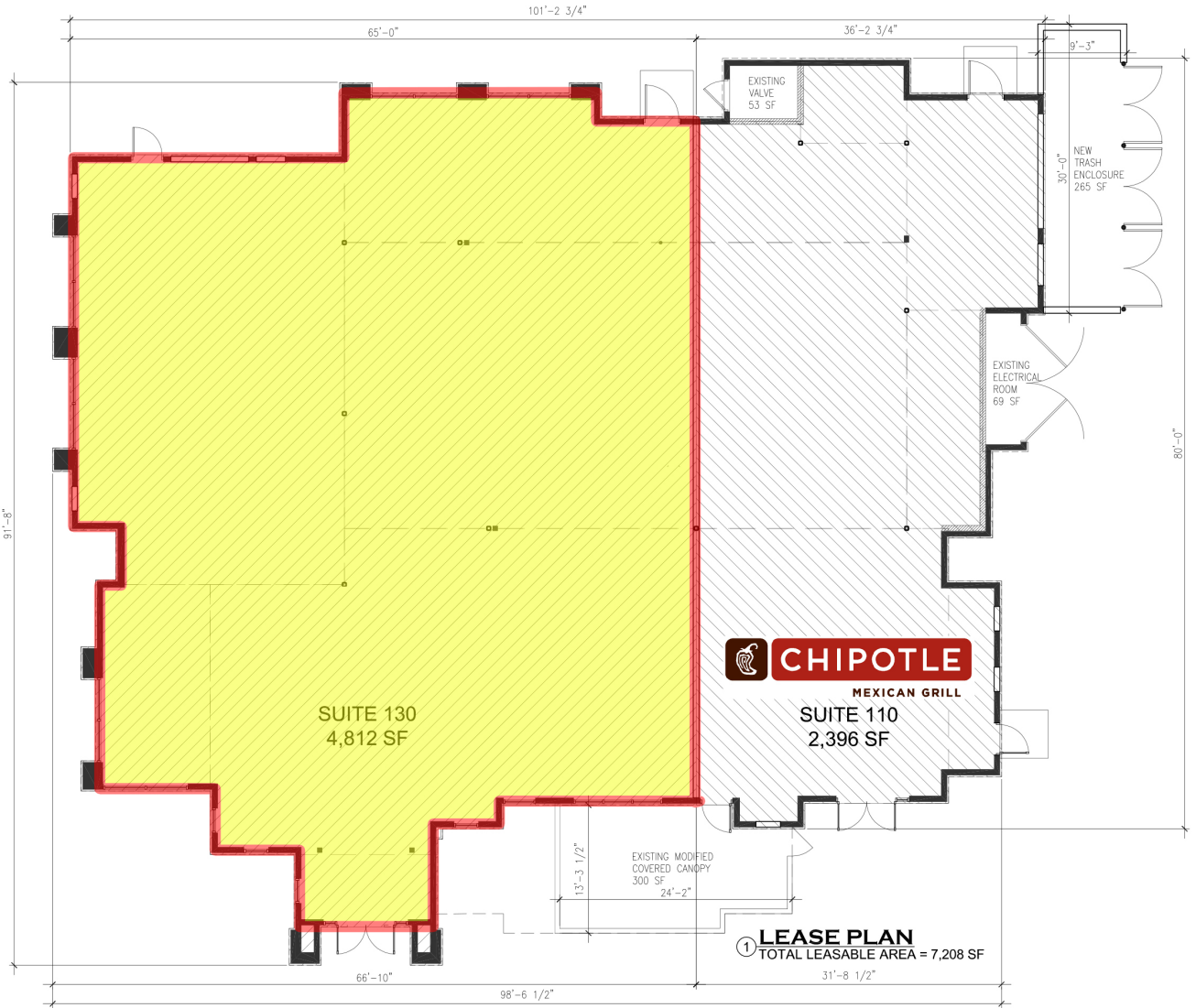
Mike Cunningham | Cell: 515-490-0551
Email: mike@buyersrealtyinc.com



4350 Westown Parkway Suite 100 West Des Moines, IA 50266
www.buyersrealtyinc.com 515-277-4000

PREMIER SHOPPES AT JORDAN CREEK RETAIL FOR LEASE

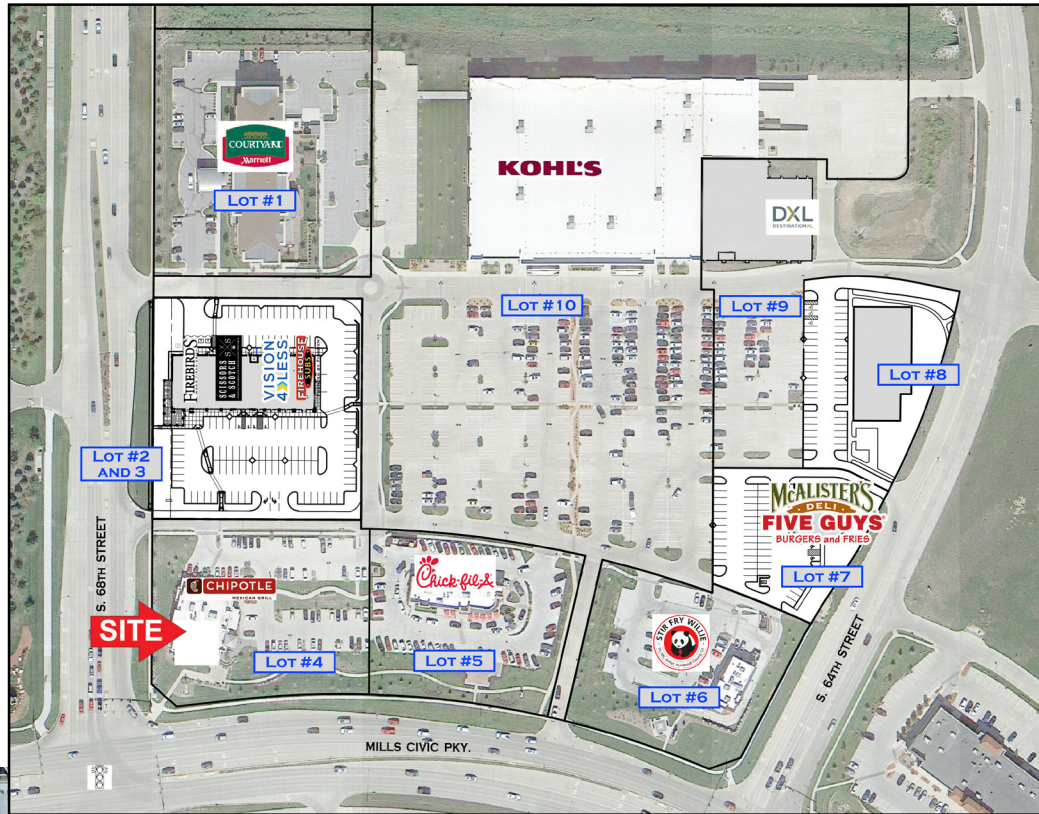
490 S 68th Street | West Des Moines, Iowa



4350 Westown Parkway Suite 100 West Des Moines, IA 50266
www.buyersrealtyinc.com 515-277-4000

PREMIER SHOPPES AT JORDAN CREEK RETAIL FOR LEASE

490 S 68th Street | West Des Moines, Iowa



FOR MORE INFORMATION:

Mike Cunningham | Cell: 515-490-0551

Email: mike@buyersrealtyinc.com

A MEMBER OF
CHAINLINKS
RETAIL ADVISORS



4350 Westown Parkway Suite 100 West Des Moines, IA 50266
www.buyersrealtyinc.com 515-277-4000