

**TREE PRESERVATION & REPLACEMENT ORDINANCE**

**REQUIREMENT FOR COMMERCIAL LOTS**

1. SIZE OF PARCEL = ±1.8 Ac.; ZONING GC
2. 10 T.D.U.'s REQUIRED PER ACRE = 10 \* 1.8 = 18 T.D.U.'s THEREFORE TOTAL OF 18 TDU'S REQUIRED
3. 3" TO 3.5" CALIPER SIZE TREE = 0.75 TDU's THEREFORE TOTAL OF 24 - 3" TO 3.5" SIZE TREES REQUIRED
4. TREE PLANTING WITHIN PARKING AREAS SHALL HAVE LANDSCAPE ISLANDS PLACED SO THAT NO LINE OF MORE THAN 16 ADJACENT PARKING SPACES EXISTS. LARGE MATURING CANOPY TREES MUST BE PLANTED WITHIN THE MEDIANS OR ISLANDS SO THAT EACH PARKING SPACE IS WITHIN 80 FEET OF A TREE IN AN INTERIOR PLANTING AREA OR WITHIN 60 FEET OF A PERIMETER TREE OR OTHER LARGE MATURING CANOPY TREE.  
\* PROVIDE 2.5 FEET OF UNCOMPACTED SOIL IN PARKING ISLANDS. (SEE PLAN FOR APPROXIMATE LOCATION OF 3" LARGE CANOPY TREES)
5. THESE TREE LOT REQUIREMENTS SHALL APPLY TO THE DEVELOPER OR WHOEVER IS RESPONSIBLE FOR OBTAINING THE BUILDING PERMIT FOR THE PROJECT.

**THIS SITE MUST CONFORM TO THE BUFFER REQUIREMENTS FOR STREET FRONTAGES**

- OPTION 1 - REQUIREMENTS**  
 8 FOOT PLANTED STRIP ADJACENT TO ROW  
 1 LARGE TREE & 25 SHRUBS PER 100 LINEAR FEET  
 (REFER TO THE CITY BUFFER ORDINANCE FOR OTHER SPECIFICATIONS)

**BUFFER REQUIREMENTS**

BUFFER REQUIRED BETWEEN PROPOSED FACILITY (ZONED GC) LANDS TO SOUTH & WEST (ZONED GC) - NO BUFFER REQUIRED SAME ZONING

**PARKING REQUIREMENTS:**

AS PER U.D.O. TABLE 4.3.3 (OFFICE, BUSINESS & PROFESSIONAL)  
 1 SPACE PER 250 GSF  
 GSF = 6,568 SF  
 15,473/250 = 62 SPACES REQUIRED/ALLOWED

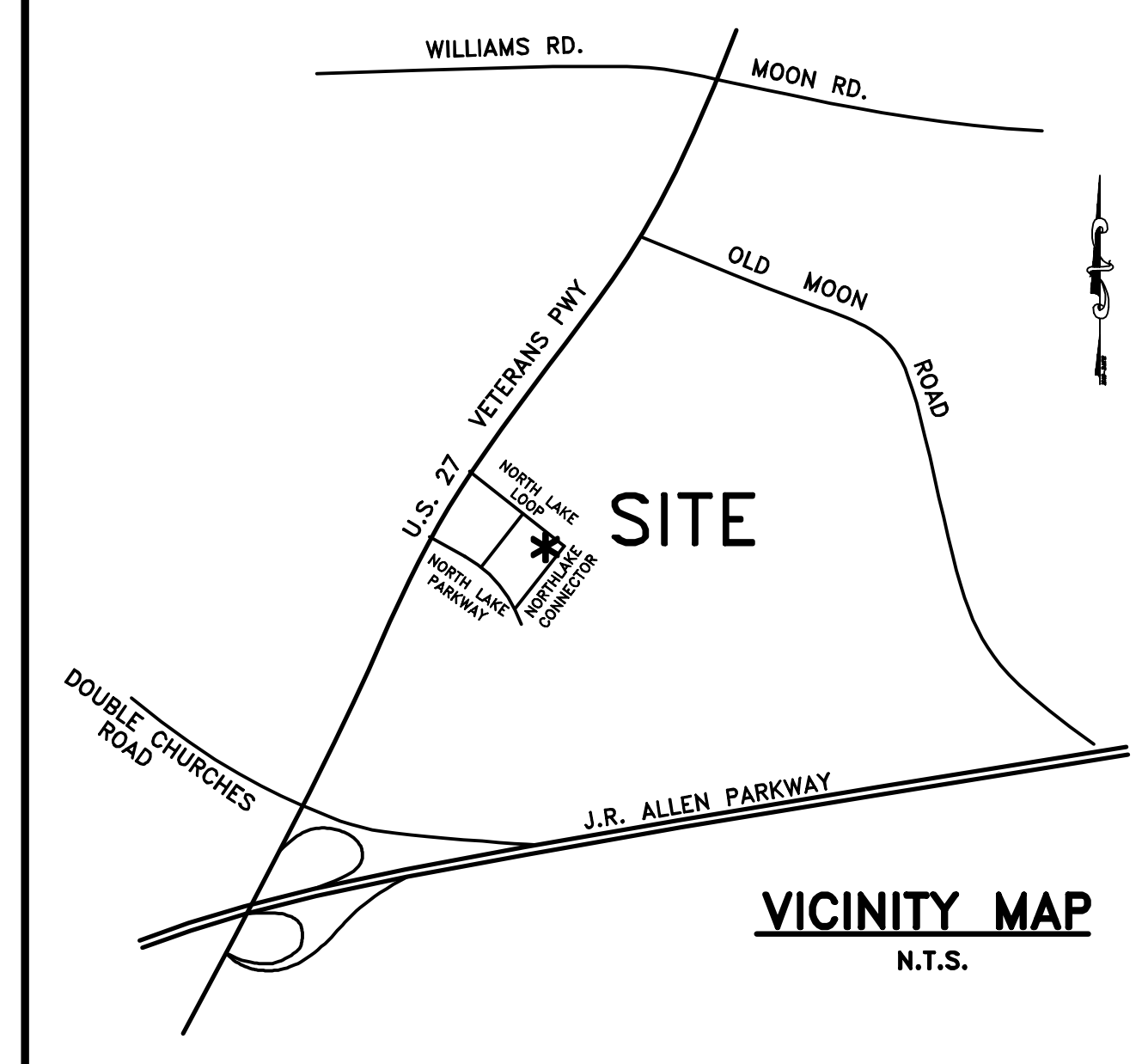
SPACES PROVIDED = 73 SPACES

EXCEEDS U.D.O. 10% ALLOWABLE SPACES  
 (VARIANCE REQUEST APPROVED BZA-09-15-001849)

**SHEET INDEX:**

SHEET	TITLE
C1.0	LAYOUT & TREE PRESERVATION PLAN
C2.0	REMOVAL PLAN
C3.0	GRADING PLAN & STORM PROFILES
C4.0	SEWER & WATER PLAN
C5.0	INITIAL EROSION CONTROL PLAN
C6.0	INTERMEDIATE EROSION CONTROL PLAN
C7.0	FINAL EROSION CONTROL PLAN
C8.0	DRAINAGE BASINS
C9.0	CONSTRUCTION DETAILS
C10.0	EROSION CONTROL NOTES
C11.0	EROSION CONTROL NOTES
C12.0	EROSION CONTROL NOTES
C13.0	WATER QUALITY CHAMBER DETAILS

**NOTE:**  
 ALL DIMENSIONS TO FACE OF CURB UNLESS NOTED OTHERWISE  
 ALL RADII DIMENSION EITHER 5' OR 15' UNLESS NOTED OTHERWISE



**MM&V**  
 ARCHITECTURE/INTERIORS  
 111 NINTH ST  
 SUITE 120  
 COLUMBUS, GA 31901  
 P: 706.571.6923  
 F: 706.571.6928

**GEORGIA**  
 REGISTERED PROFESSIONAL ARCHITECT  
 No. 25018  
 T. SCA

MOON, MEEKS, MASON & VINSON, INC.  
 Civil Engineers Land Surveyors  
 100 SOUTHERN WAY, SUITE A  
 COLUMBUS, GA 31904  
 P: 706.327.8306  
 F: 706.323.0424

**ADAMS FAMILY & COSMETIC DENTISTRY**

COLUMBUS GEORGIA

**CONSTRUCTION DOCUMENTS**

Project Number: 14-403  
 MM&V #214088  
 Date: 25 FEBRUARY 2016  
 Drawn By: ATS  
 Checked By: WDM  
 Revisions:

**CAUTION !!!**  
 CONTRACTOR TO LOCATE AND PROTECT EXISTING UTILITIES.

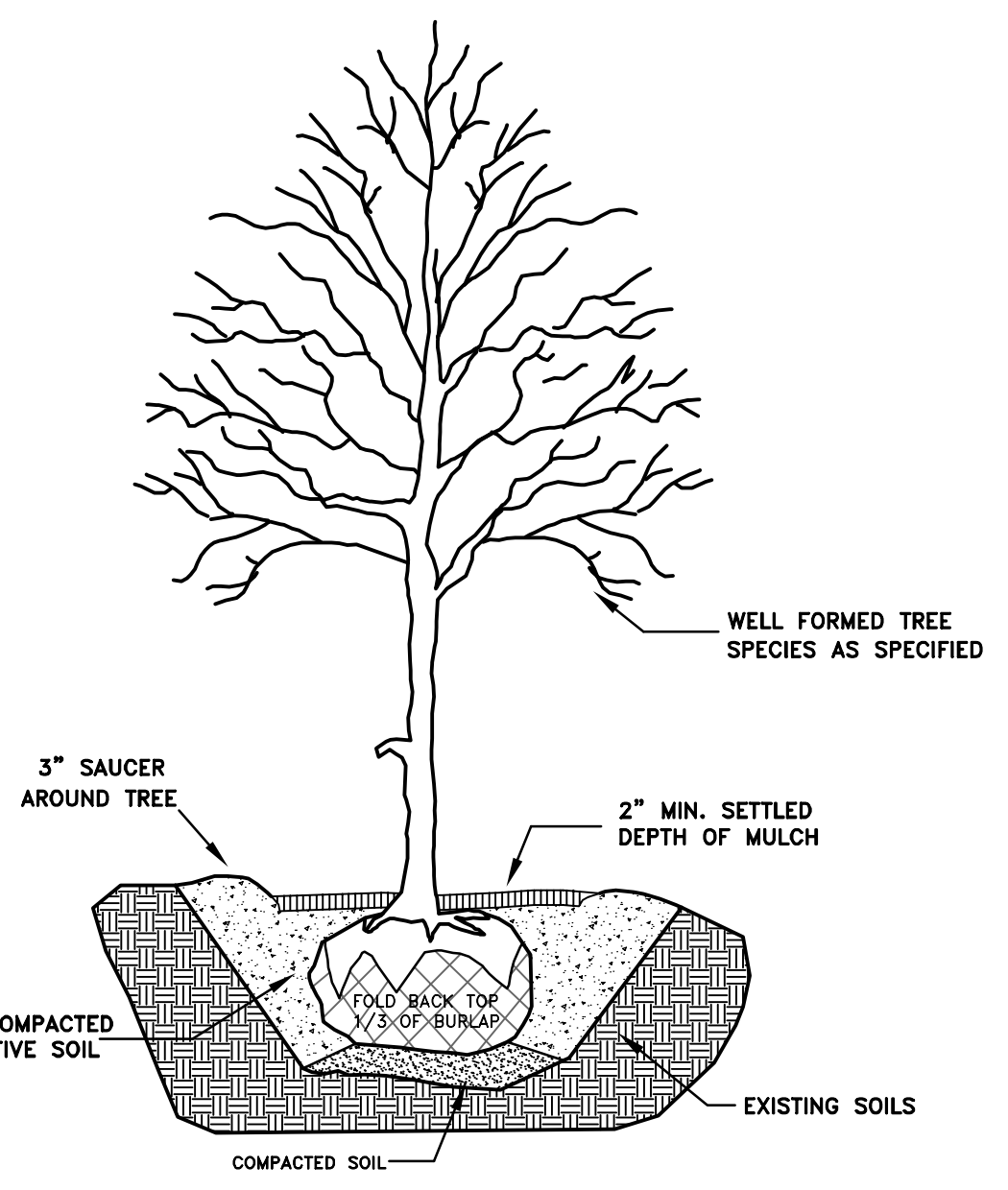
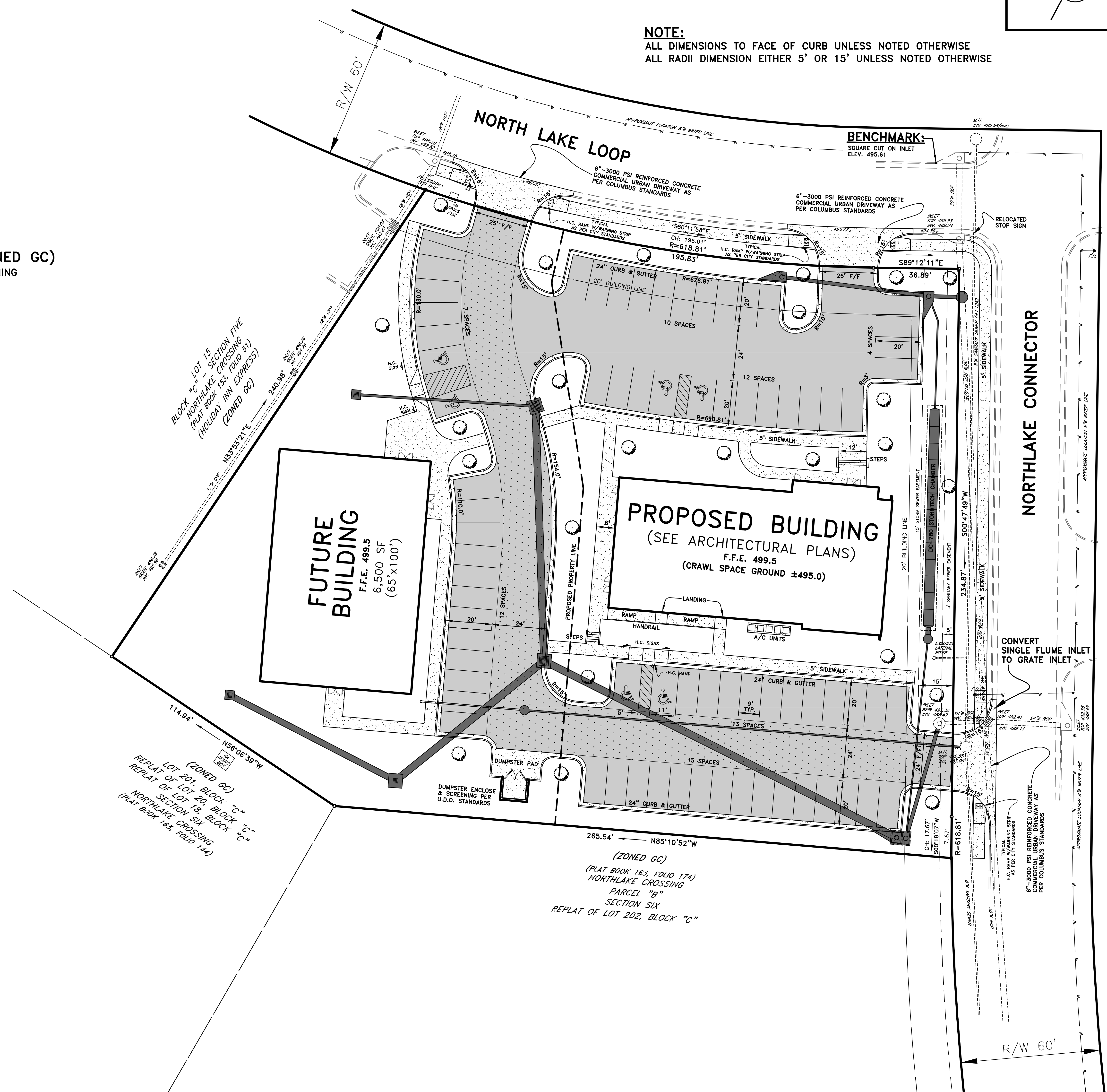
CONTRACTOR TO NOTIFY COLUMBUS WATER WORKS BEFORE BEGINNING CONSTRUCTION.



Know what's below.  
 Call before you dig.

**NOTES:**  
 ADDRESS OF PROJECT: 7021 NORTHLAKE CONNECTOR  
 TOTAL SITE AREA IS ±1.8 ACRES.  
 PROPERTY IS ZONED GC (NO CONDITIONS ON ZONING).  
 ALL WORK SHALL BE PERFORMED IN ACCORDANCE WITH THE PLANS AND SITE WORK SPECIFICATIONS AND SHALL COMPLY WITH APPLICABLE FEDERAL, STATE AND LOCAL CODES.  
 THE CONTRACTOR SHALL LOCATE AND PROTECT ANY EXISTING UTILITIES.  
 IT SHALL BE THE RESPONSIBILITY OF THE CONTRACTOR TO STAKE OUT OR LAIOUT ALL IMPROVEMENTS.  
 PROJECT SHALL BE GRADED IN SUCH A WAY AS TO RESULT IN POSITIVE DRAINAGE AWAY FROM THE BUILDING AND TOWARD THE STORM SEWER SYSTEM, LOTSWAY, SWALE, DRAINAGE STRUCTURE, DRIVE ETC.)  
 TOPSOIL SHALL BE REMOVED BEFORE BEGINNING EXCAVATION, STOCKPILED AND SPREAD OVER ALL DISTURBED AREAS UPON COMPLETION OF GRADING.  
 ALL BACK FILL IN ALL STORM, SANITARY, WATER, ETC. LINE TRENCHES WILL BE COMPACTED TO 95% MAXIMUM DENSITY UNLESS OTHERWISE SPECIFIED.  
 ALL SANITARY AND STORM PIPES WHICH ARE TO JOIN PLUMBING AND ROOF DRAINS SHALL BE INSTALLED TO WITHIN FIVE FEET (5') OF THE BUILDING.  
 CONTRACTOR SHALL NOTIFY COLUMBUS WATER WORKS ENGINEERING DEPARTMENT 48 HOURS PRIOR TO INSTALLING ANY SANITARY SEWER.  
 ALL SANITARY SEWER SHALL BE INSTALLED PER C.W.W. SPECIFICATIONS.  
 ALL MANHOLES INCLUDING EXISTING SHALL BE CORED AND RUBBER BOOT INSTALLED.  
 ALL STORM PIPE GREATER THAN 12" SHALL BE REINFORCED CONCRETE, THOSE EQUAL TO OR LESS THAN 12" SHALL BE HIGH-DENSITY POLYETHYLENE PIPE (HDPE) UNLESS NOTED OTHERWISE.  
 VALID GEOTECHNICAL ENGINEERING LICENSE REQUIRED FOR INSTALLATION OF WATER AND SANITARY SEWER MAINS.  
 ALL HANDICAP ACCESSIBLE PARKING SPACES AND STRIPING SHALL BE IN ACCORDANCE WITH THE AMERICAN WITH DISABILITY ACT (ADA) REQUIREMENTS AND STATE CODE.  
 ALL TRAFFIC SIGNS SHALL CONFORM TO THE UNIFORM TRAFFIC CONTROL MANUAL AND THE STATE OF GEORGIA DEPARTMENT OF TRANSPORTATION.  
 MAXIMUM ALLOWABLE GRADE IN ALL DIRECTIONS ACROSS HANDICAP PARKING SHALL BE 2.00%.

**SCALE: 1"=20'**



**TREE PLANTING DETAIL**  
 PLANTING HOLE IS 3x DIAMETER OF THE ROOT BALL