

AVAILABLE FOR SALE
SINGLE TENANT BUILDING

5222 N MAIN STREET DOWNERS GROVE | ILLINOIS

DOWNTOWN DOWNERS GROVE

SITE DETAILS

- Unique Office Building in Downtown Downers Grove
- Loft Style with exposed beams
- Building size: 8,693 square feet
- Zoned DB - Downtown Business District
- Site size: 3,380 square feet or 0.078 acres
- Elevator
- Taxes: \$28,023.16 (2025 payable 2026)
- Total rehab in 2002 with high end finishes
- Parking available in Village Parking Garage
- Walk to Metra Trail
- Pin # 09-08-310-042

SALE PRICE

\$1,500,000



FOR MORE INFORMATION, PLEASE CONTACT:

PATRICK STANTON
630.269.2968 mobile
pat@patrickcommercial.com

Patrick  REAL ESTATE
COMMERCIAL

INTERIOR PHOTOS



Entry & Reception Area



Stairway



Main floor Work area



Private Office



Kitchen & Lunchroom



Conference Room



Lower Level Work Area

DOWNTOWN DOWNERS GROVE

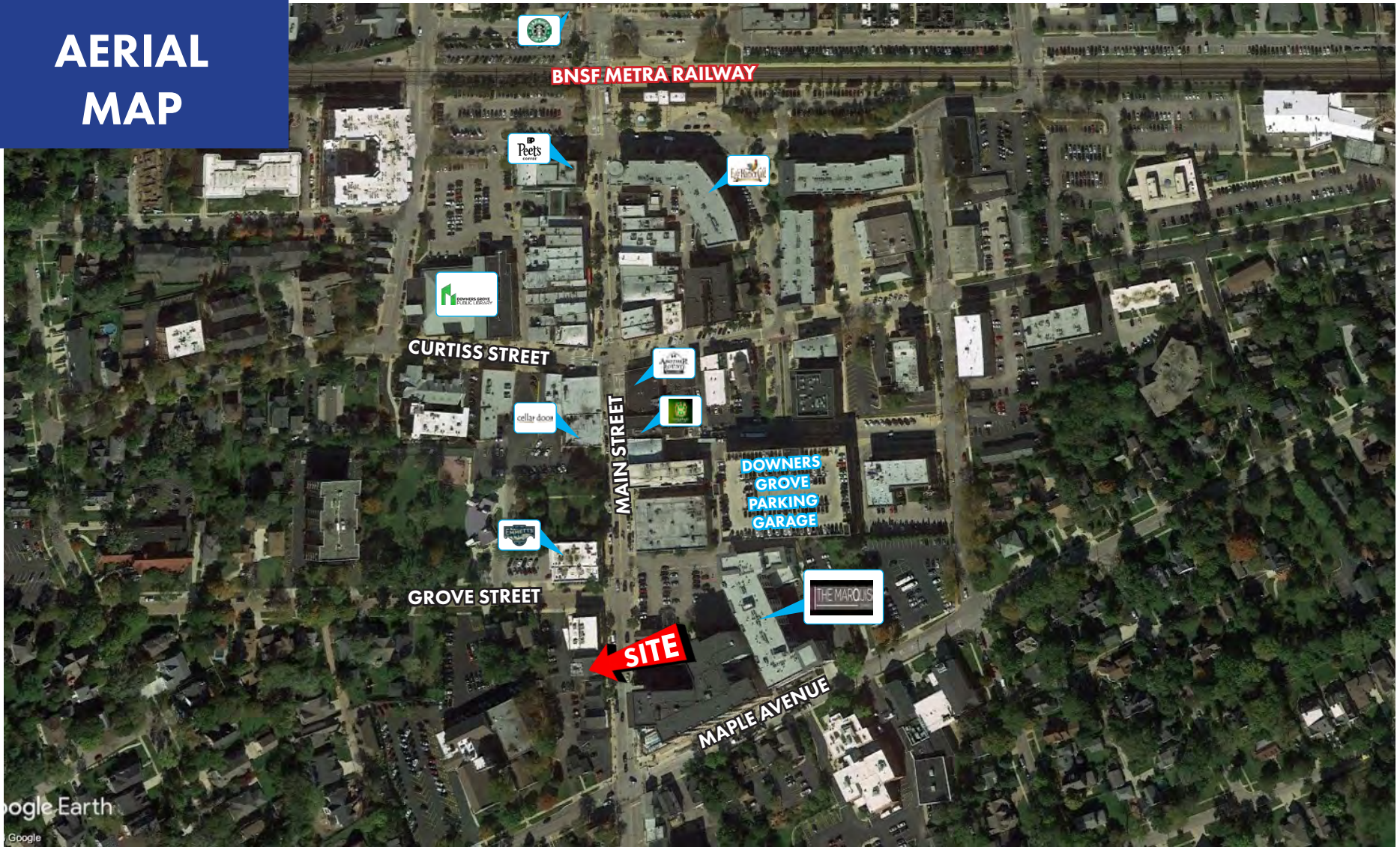
5222 S. MAIN STREET, DOWNERS GROVE, IL

FOR MORE INFORMATION, PLEASE CONTACT:

PATRICK STANTON
630.269.2968 mobile
pat@patrickcommercial.com

Patrick
COMMERCIAL REAL ESTATE

AERIAL MAP



DOWNTOWN DOWNERS GROVE

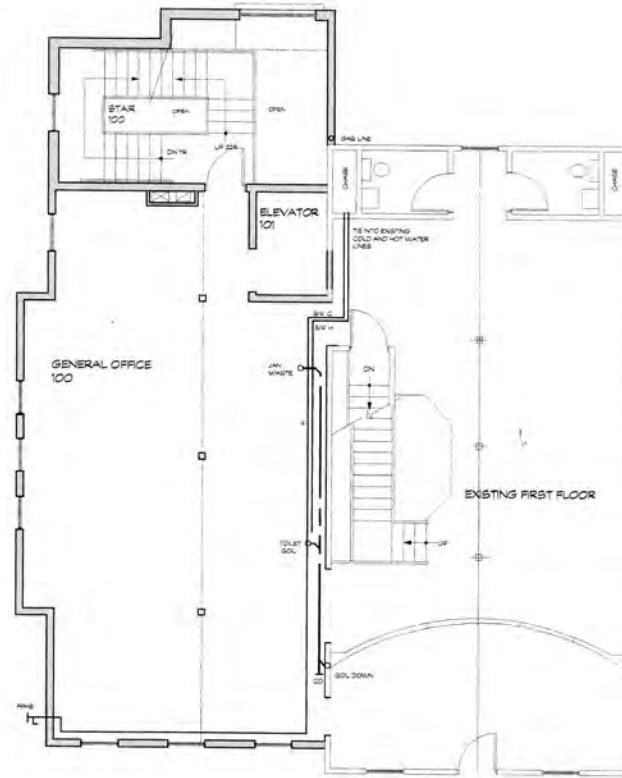
5222 S. MAIN STREET, DOWNERS GROVE, IL

FOR MORE INFORMATION, PLEASE CONTACT:

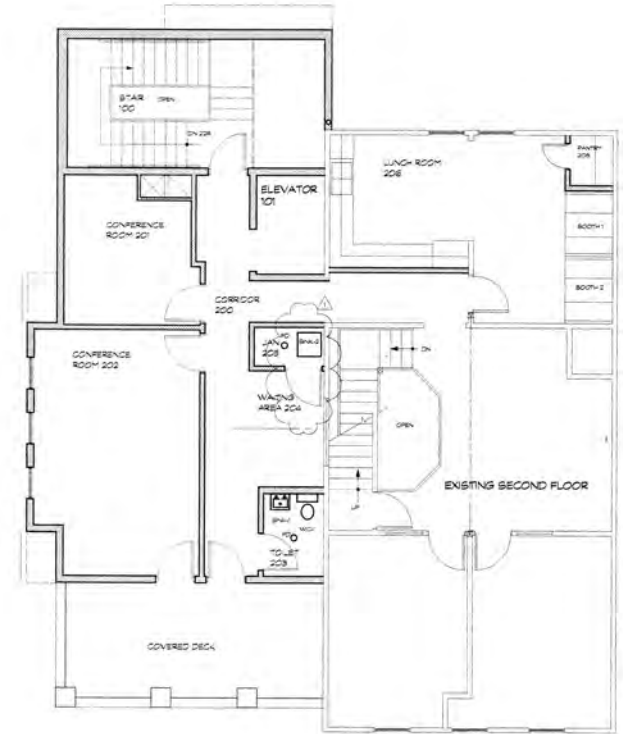
PATRICK STANTON
630.269.2968 mobile
pat@patrickcommercial.com

Patrick  REAL ESTATE
COMMERCIAL

FLOOR PLANS



FIRST FLOOR PLAN



SECOND FLOOR PLAN

DOWNTOWN DOWNERS GROVE

5222 S. MAIN STREET, DOWNERS GROVE, IL

FOR MORE INFORMATION, PLEASE CONTACT:

PATRICK STANTON
630.269.2968 mobile
pat@patrickcommercial.com

