



Former Dakota Millwork

1501 N. Industrial Avenue, Sioux Falls, SD 57104

Property Features

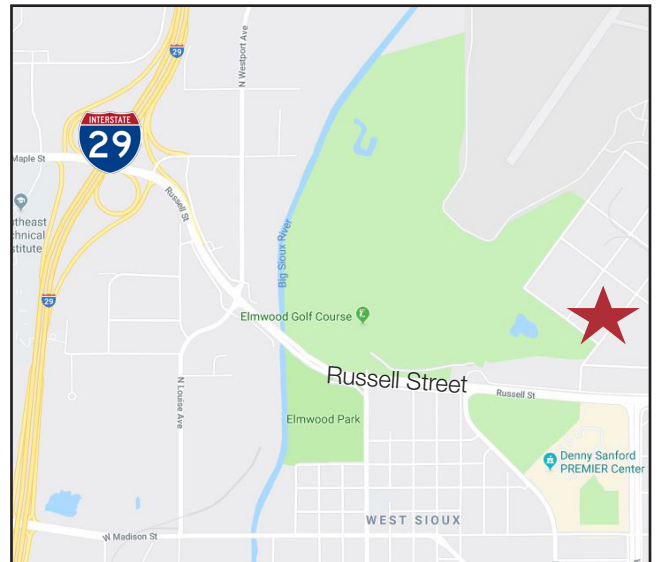
- Building size: approximately 25,300 sq. ft.
 - Office/ showroom space 4,050 sq. ft.
 - Warehouse 18,750 sq. ft.
 - Loading dock 2,500 sq. ft.
- Lot size: 1.10 acres (48,070 sq. ft.)
- Year built: 1964
- New roof in 2006
- Four 8' loading docks (one with leveler)
- One drive-in door
- 12' clear height in warehouse
- Fire sprinkler

Price

- List price: \$1,395,000 (\$55.13/ sq. ft.)
- Lease rate: \$5.00/ sq. ft. warehouse, \$8.00/ sq. ft. office
- 2018 real estate taxes: \$14,686.72

Location

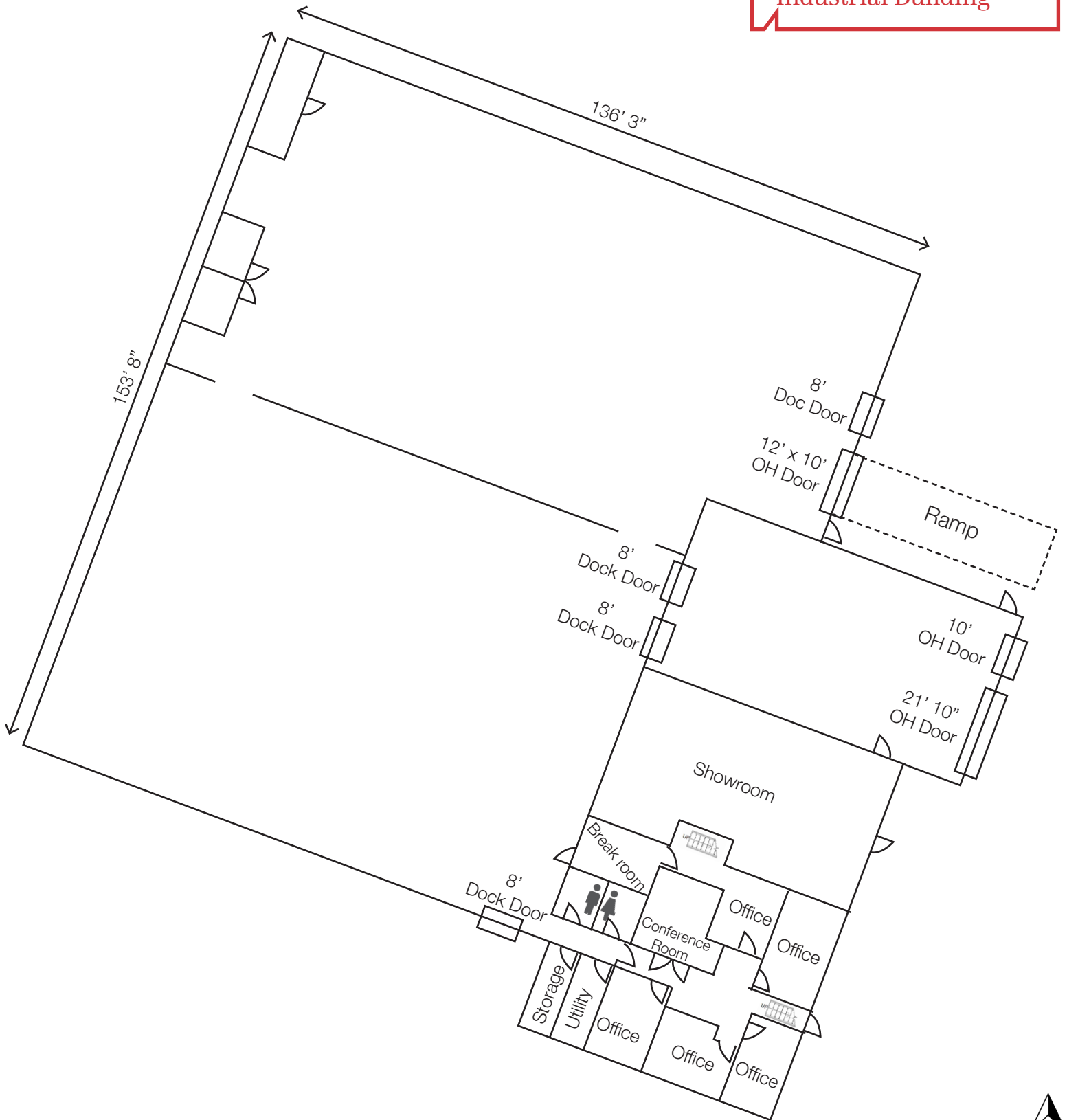
- Conveniently located with easy access to I-29, Russell Street, and Minnesota Avenue
- Area neighbors include: Sioux Falls Regional Airport, Spartan Nash, Creative Surfaces, Denny Sanford Premier Center, Howard Wood Field



Craig Hagen, CCIM, SIOR

+1 605 310 4227 mobile
chagen@naisiouxfalls.com

For Sale or Lease
Industrial Building



For Sale or Lease
Industrial Building

