

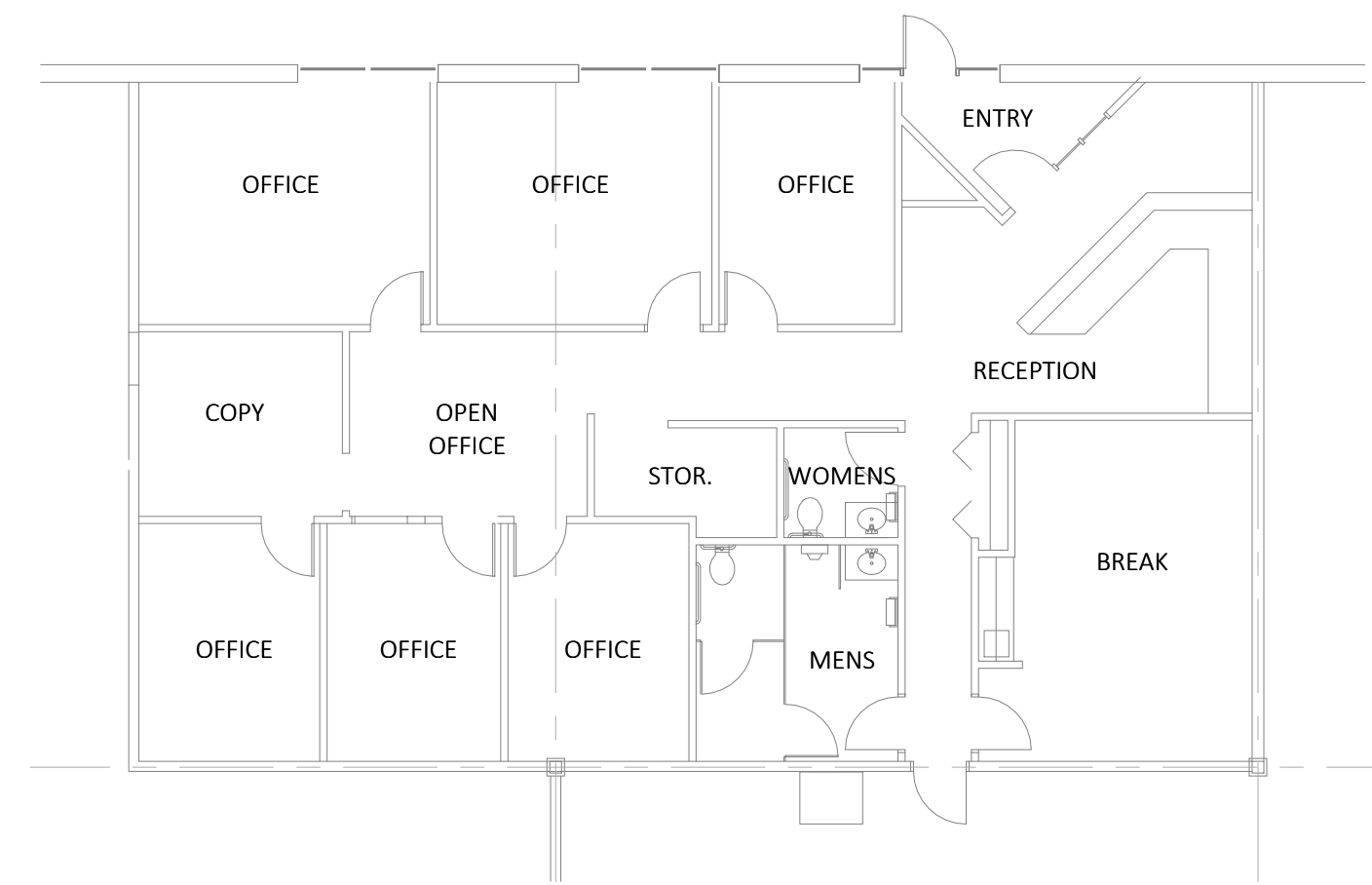
1 OVERALL BUILDING PLAN
P001 N.T.S.

OVERALL BUILDING PLAN (90,186 SF TOTAL)

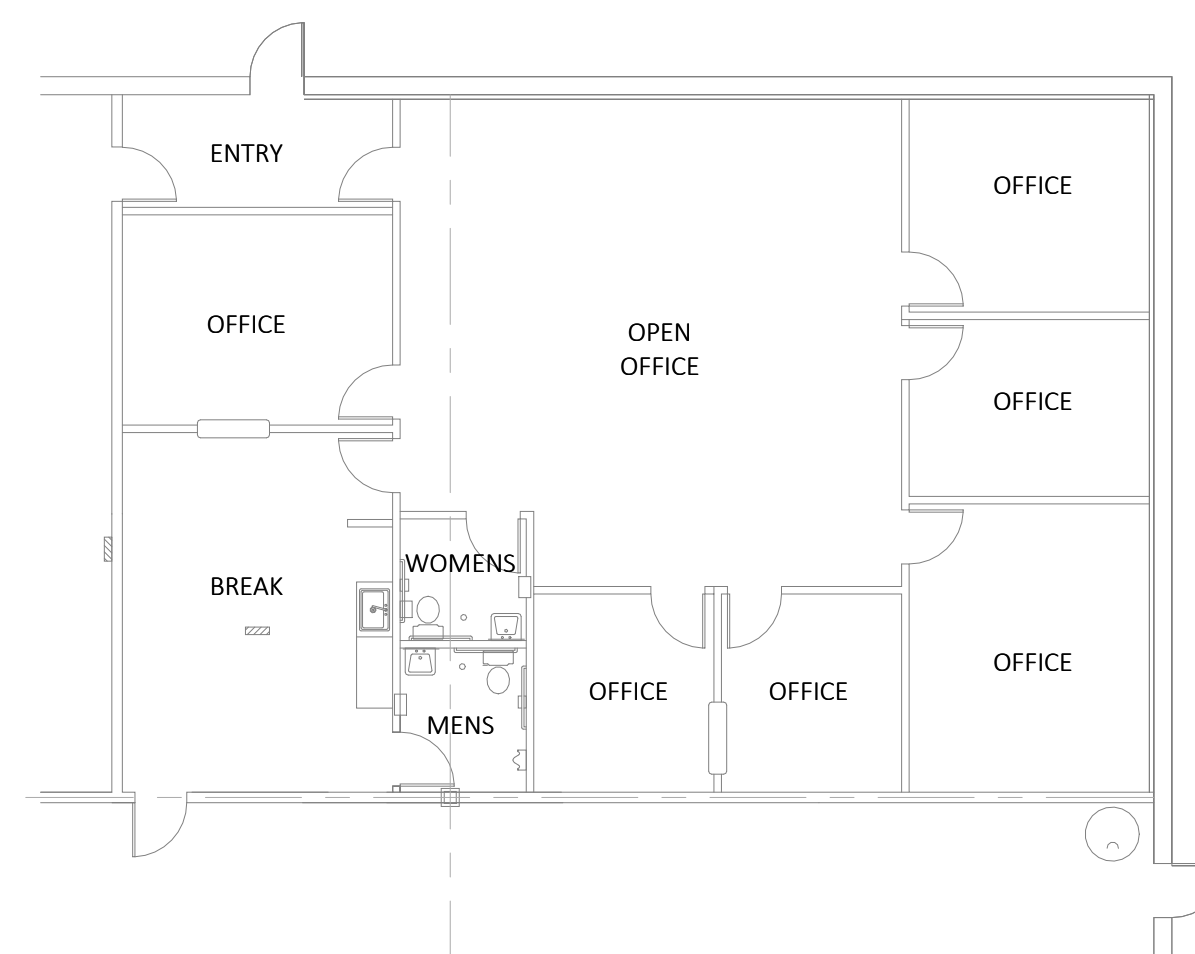
401 11TH AVE. S. HOPKINS, MN
10-02-2025



1 ENLARGED OFFICE PLAN A
P002 3/32" = 1'-0"



2 ENLARGED OFFICE PLAN B
P002 3/32" = 1'-0"



3 ENLARGED OFFICE PLAN C
P002 3/32" = 1'-0"