

FOR SALE

CBRE

Douglasdale Office Condos Calgary, Alberta

Unit 2 & Unit 18, 11410 27 Street SE



Property Information



Fully developed with high quality office intensive improvements



Units provided furnished



Access to Deerfoot Trail and Barlow Trail



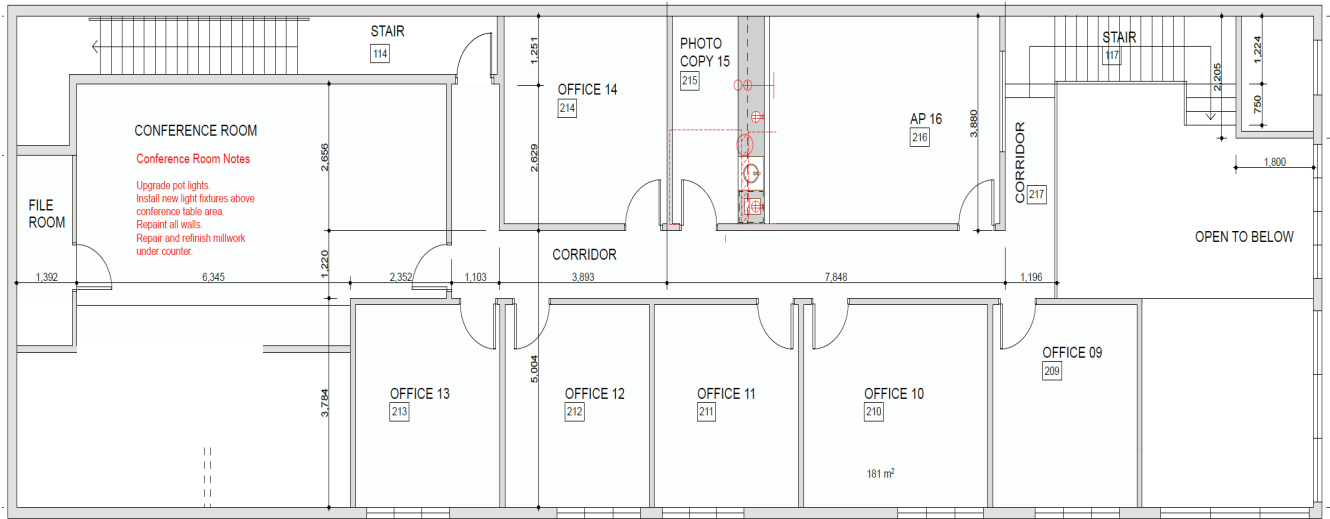
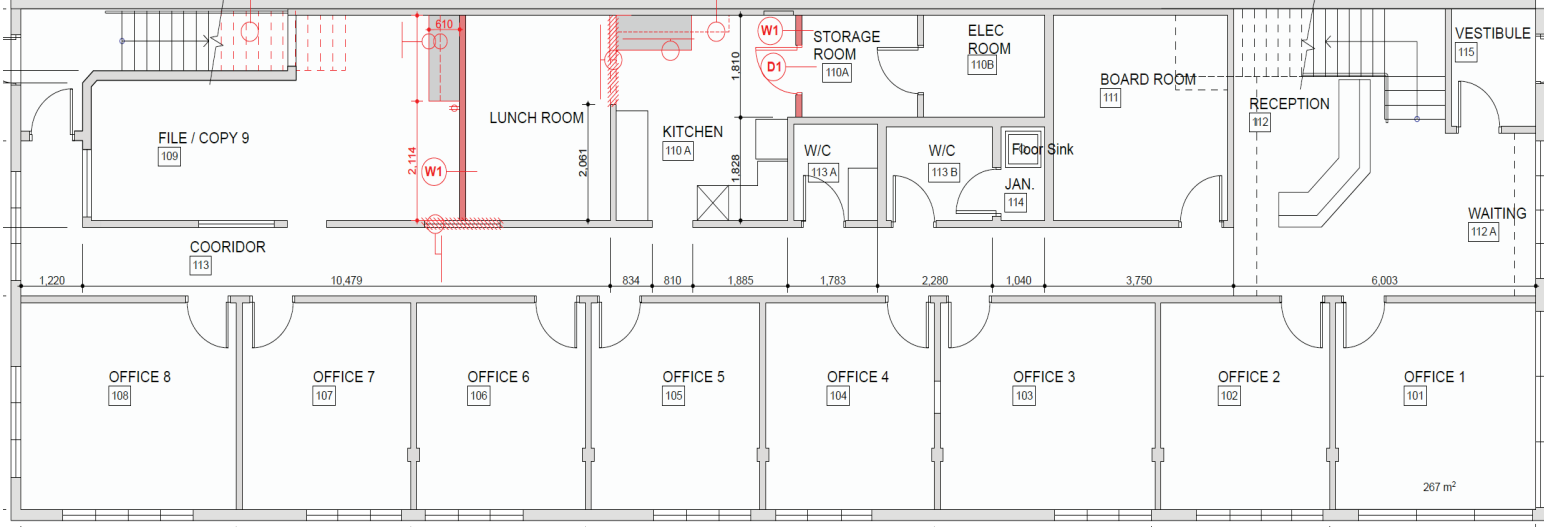
Walking distance to Douglasglen BRT terminal



Walking distance to Douglas Square shopping centre and a short drive to Quarry Park

Space Available:	Unit 2: 5,000 SF Unit 18: 8,021 SF
Zoning:	I-C
Asking Price:	Market
Property Taxes:	Unit 2: \$27,243.01 Unit 18: \$58,029.86
Monthly Condo Fee:	Unit 2: \$1,029.48 (inclusive of GST) Unit 18: \$2,058.96 (inclusive of GST)
Space Available:	Unit 2: 5,000 SF Unit 18: 8,021 SF
Availability:	Immediately
Parking:	Free Surface Parking

Unit 2: 5,000 SF



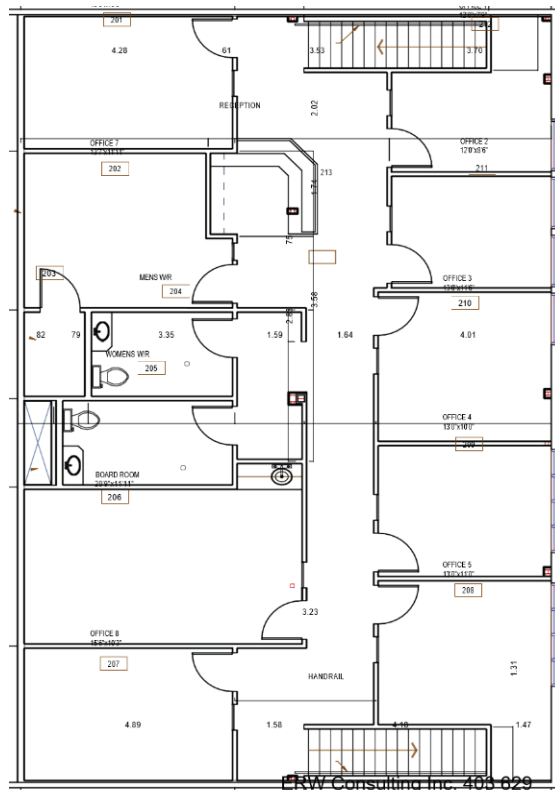
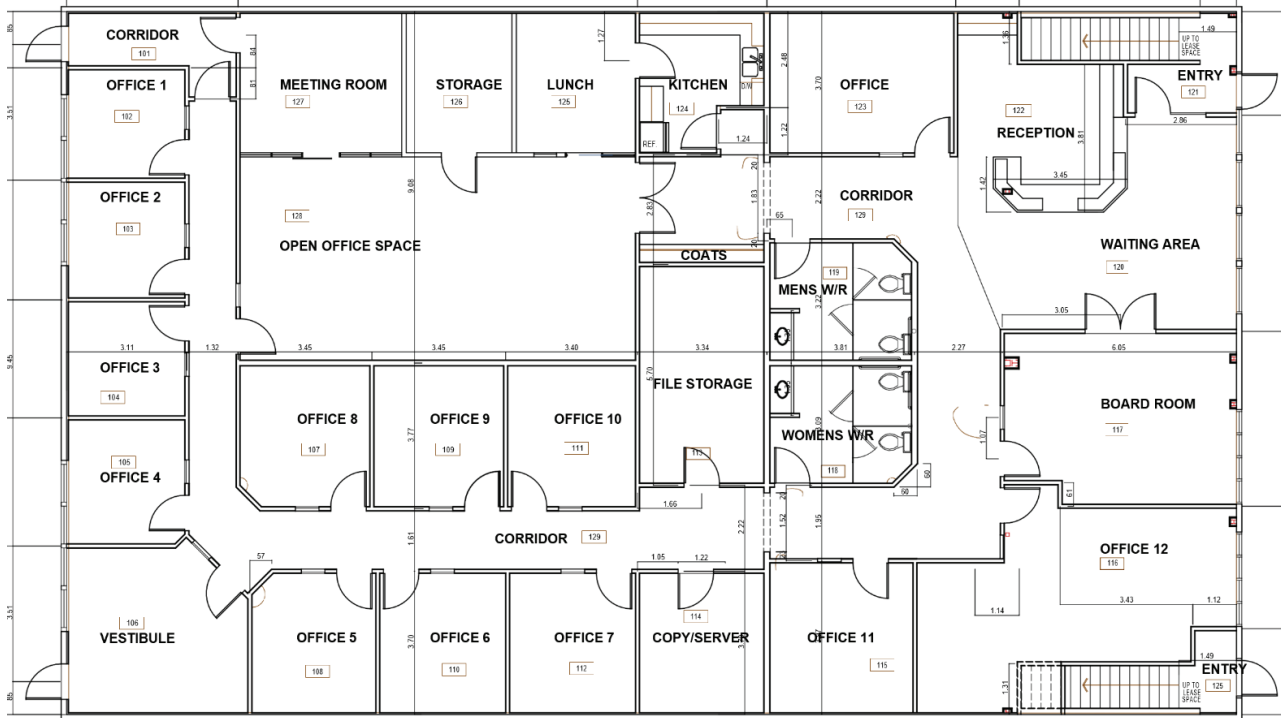
VIRTUAL TOUR



Unit 2: 5,000 SF



Unit 18: 8,021 SF



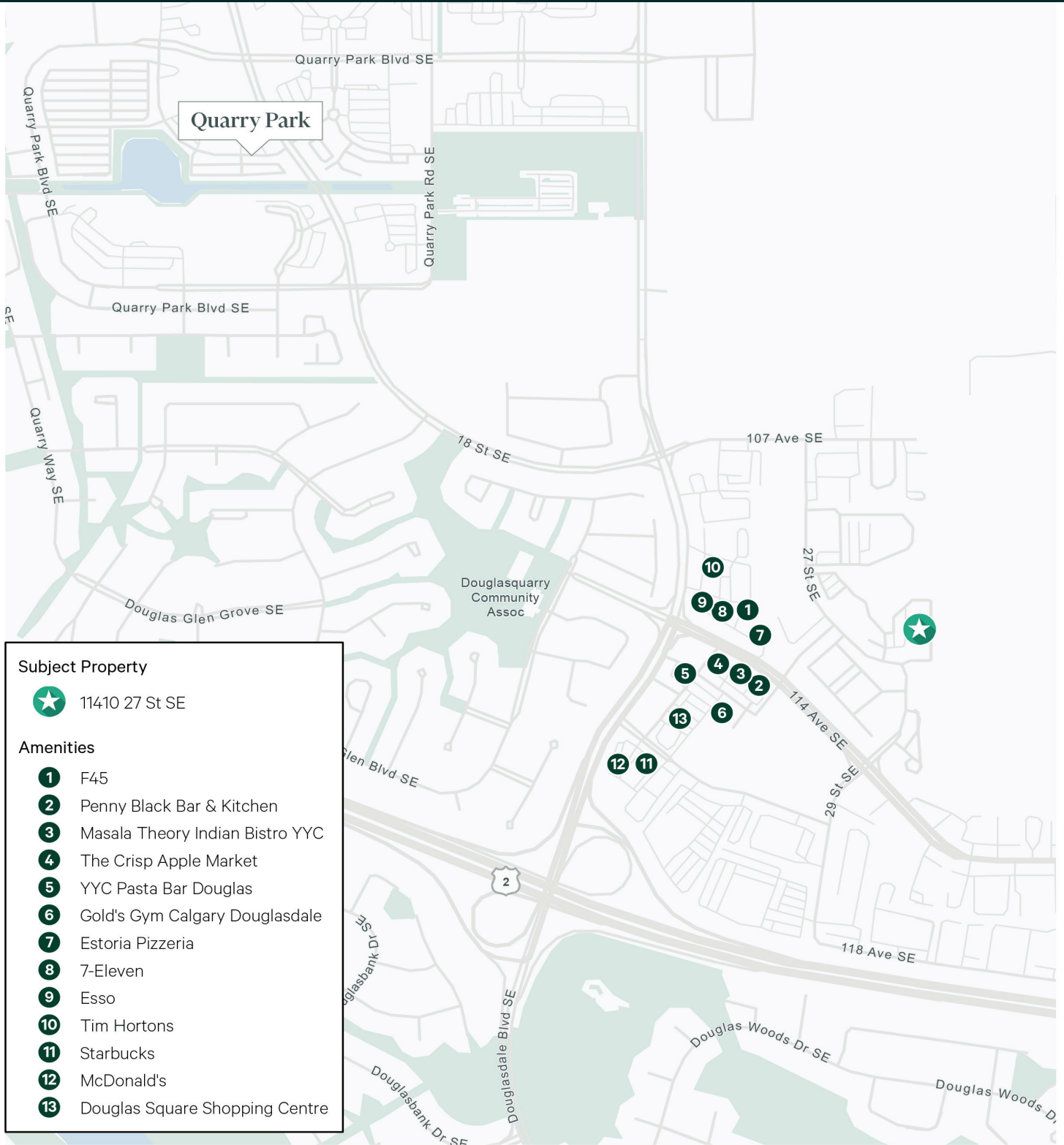
VIRTUAL TOUR



Unit 18: 8,021 SF



Location



Subject Property

- ★ 11410 27 St SE

Amenities

- 1 F45
- 2 Penny Black Bar & Kitchen
- 3 Masala Theory Indian Bistro YYC
- 4 The Crisp Apple Market
- 5 YYC Pasta Bar Douglas
- 6 Gold's Gym Calgary Douglasdale
- 7 Estoria Pizzeria
- 8 7-Eleven
- 9 Esso
- 10 Tim Hortons
- 11 Starbucks
- 12 McDonald's
- 13 Douglas Square Shopping Centre



Douglasdale Office Condos

11410 27 Street SE

For more information, please contact:

Stuart Watson

Senior Vice President

T 403 750 0540

stuart.watson@cbre.com

Sara Atchison

Associate

T 403 750 0526

sara.atchison@cbre.com

CBRE

This disclaimer shall apply to CBRE Limited, Real Estate Brokerage, and to all other divisions of the Corporation; to include all employees and independent contractors ("CBRE"). All references to CBRE Limited herein shall be deemed to include CBRE, Inc. The information set out herein, including, without limitation, any projections, images, opinions, assumptions and estimates obtained from third parties (the "Information") has not been verified by CBRE, and CBRE does not represent, warrant or guarantee the accuracy, correctness and completeness of the Information. CBRE does not accept or assume any responsibility or liability, direct or consequential, for the Information or the recipient's reliance upon the Information. The recipient of the Information should take such steps as the recipient may deem necessary to verify the Information prior to placing any reliance upon the Information. The Information may change and any property described in the Information may be withdrawn from the market at any time without notice or obligation to the recipient from CBRE. CBRE and the CBRE logo are the service marks of CBRE Limited and/or its affiliated or related companies in other countries. All other marks displayed on this document are the property of their respective owners. All Rights Reserved.