



## Knapp's Centre

300 S Washington Sq  
Lansing, Michigan 48933

### Property Highlights

- Historic Knapp's Centre completely renovated in 2014
- Space from 1,722 SF up to 16,000 SF available
- Gorgeous atrium fills the center of the building with natural light
- Luxury finishes throughout
- Just a block and a half from the Capitol
- Join the resurgent Washington Square Mall

### Offering Summary

Lease Rate:	\$23.00 SF/yr (MG)
Building Size:	169,704 SF
Available SF:	1,722 - 16,034 SF
Lot Size:	29,030 SF

### Demographics

	1 Mile	3 Miles	5 Miles
Total Households	5,871	39,576	80,048
Total Population	11,590	87,914	190,310
Average HH Income	\$58,146	\$67,506	\$71,871

### For More Information

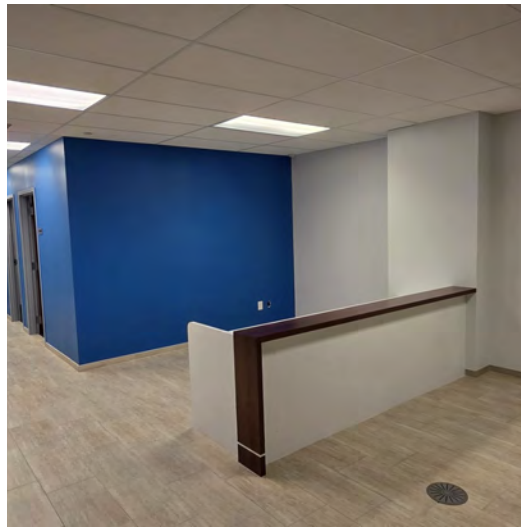
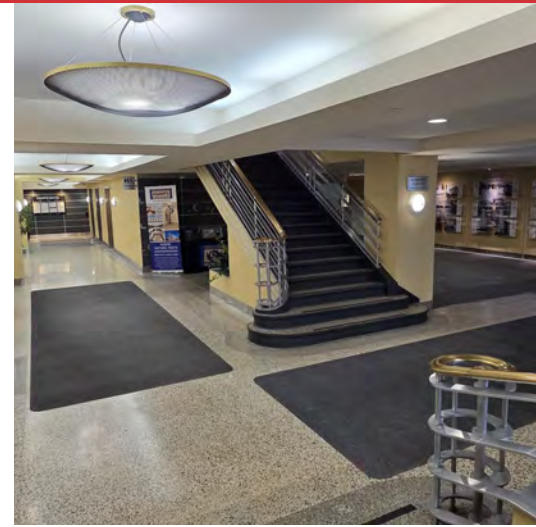


#### Jeffrey Branch

Associate Broker

O: 517 487 9222 | C: 517 899 6368

jbranch@naimidmichigan.com



## Lease Information

Lease Type:	MG	Lease Term:	Negotiable
Total Space:	1,722 - 16,034 SF	Lease Rate:	\$23.00 SF/yr

## Available Spaces

Suite	Tenant	Size (SF)	Lease Rate
L20	Available	2,218 SF	\$23.00 SF/yr
100	Available	3,611 - 8,094 SF	Negotiable
M10	Available	4,483 - 8,094 SF	Negotiable
M20	Available	1,722 SF	\$23.00 SF/yr
215	Available	2,978 SF	\$23.00 SF/yr
315	Available	2,980 SF	\$23.00 SF/yr
325	Available	3,599 SF	\$23.00 SF/yr
405	Available	2,680 - 16,034 SF	\$23.00 SF/yr
425	Available	3,608 SF	\$23.00 SF/yr
435	Available	2,557 - 16,034 SF	\$23.00 SF/yr

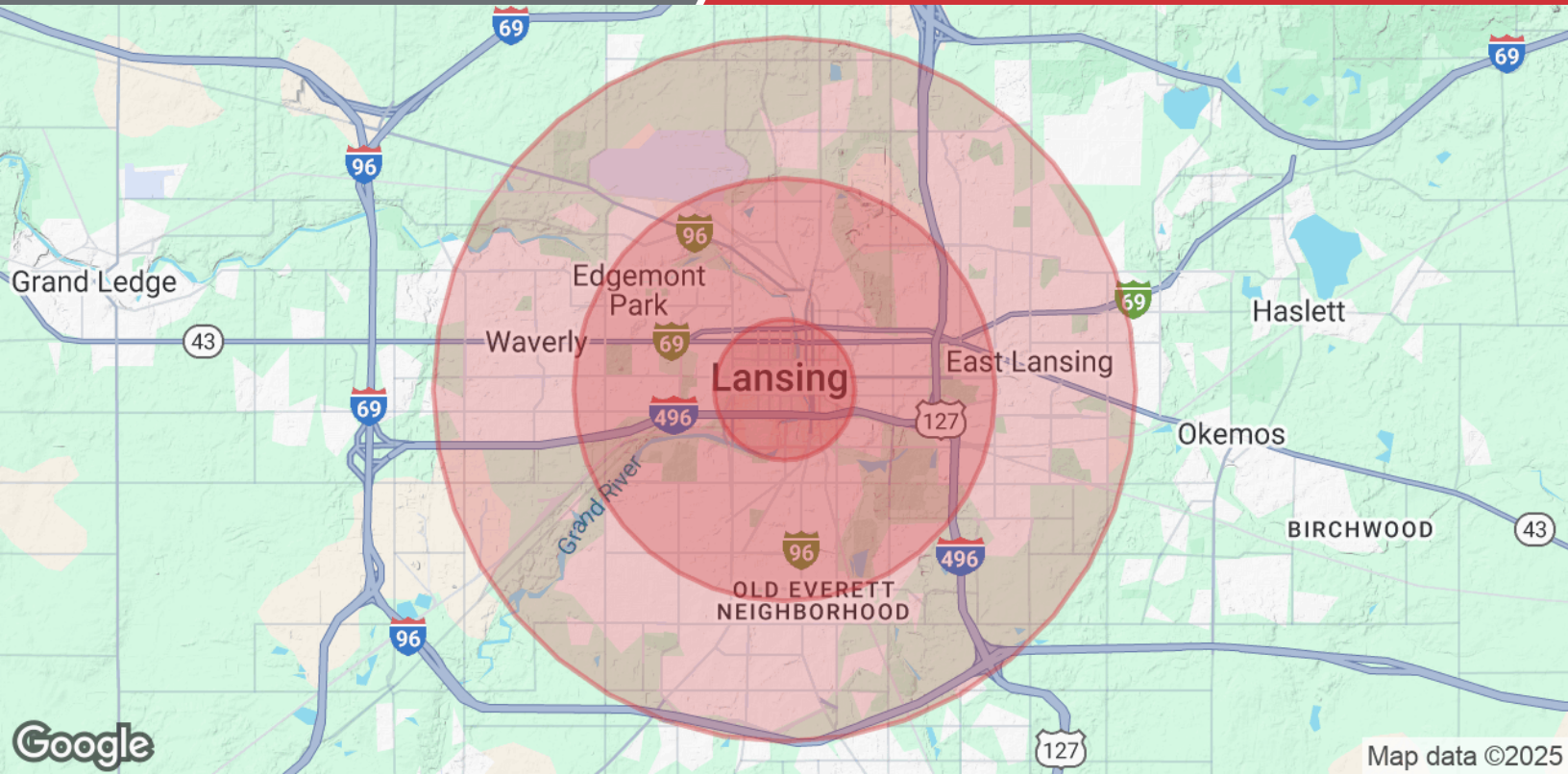


Google

Imagery ©2025 Airbus, CNES / Airbus, Maxar Technologies

NO WARRANTY OR REPRESENTATION, EXPRESS OR IMPLIED, IS MADE AS TO THE ACCURACY OF THE INFORMATION CONTAINED HEREIN, AND THE SAME IS SUBMITTED SUBJECT TO ERRORS, OMISSIONS, CHANGE OF PRICE, RENTAL OR OTHER CONDITIONS, PRIOR SALE, LEASE OR FINANCING, OR WITHDRAWAL WITHOUT NOTICE, AND OF ANY SPECIAL LISTING CONDITIONS IMPOSED BY OUR PRINCIPALS NO WARRANTIES OR REPRESENTATIONS ARE MADE AS TO THE CONDITION OF THE PROPERTY OR ANY HAZARDS CONTAINED THEREIN ARE INTENDED TO BE IMPLIED

2149 Jolly Road, Suite 200  
Okemos, MI 48864  
517 487 9222 tel  
naimidmichigan.com



<b>Population</b>	<b>1 Mile</b>	<b>3 Miles</b>	<b>5 Miles</b>
Total Population	11,590	87,914	190,310
Average Age	37	38	37
Average Age (Male)	37	37	36
Average Age (Female)	37	39	38
<b>Households &amp; Income</b>	<b>1 Mile</b>	<b>3 Miles</b>	<b>5 Miles</b>
Total Households	5,871	39,576	80,048
# of Persons per HH	2	2.2	2.4
Average HH Income	\$58,146	\$67,506	\$71,871
Average House Value	\$142,195	\$146,491	\$178,057

Demographics data derived from AlphaMap