

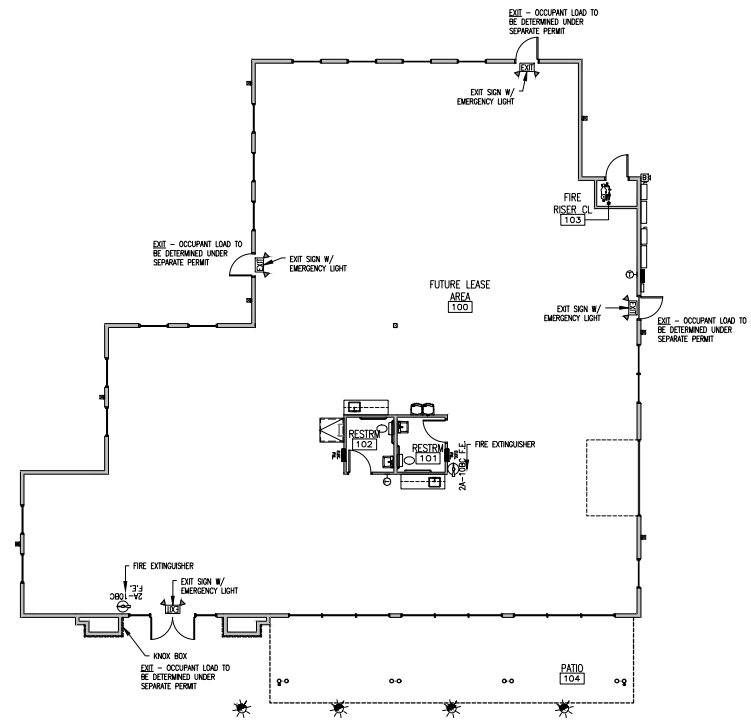


BY DRAWING NAME
REVISIONS
▲
▲

CODE DATA			
OCCUPANCY CLASSIFICATION: B & S1 (NON SEPARATED USE)			
CONSTRUCTION TYPE: V-B 1-STORY (SPRINKLED)			
CONSTRUCTION AREA DATA			
ENCLOSED AREA	4,958 S.F.		
PATIO AREA	577 S.F.		
TOTAL AREA	5,535 S.F.		
ACTUAL & ALLOWABLE BUILDING AREAS & HEIGHT (SECTION 506.2)			
OCC. TYPE	ALLOWABLE		
B & S1 (NON SEPARATED USE)	Ht.	STORIES	SQ. FT.
(TO BE SUBMITTED UNDER SEPARATE PERMIT)	55'	2	36,000 S.F. (> THAN ACTUAL OF 5,535 S.F.)
OCCUPANT LOAD			
UNASSIGNED:	5,535 SF	(TO BE SUBMITTED UNDER SEPARATE PERMIT)	
DATING REQUIREMENTS (TABLE 1006.3.2)			
EGRESS WIDTH REQUIRED: (TO BE SUBMITTED UNDER SEPARATE PERMIT)			
DOOR OPENING WIDTH REQUIRED - 180"			
FIRE EXTINGUISHER			
2A-10BC FIRE EXTINGUISHER, WALL MOUNTED (1 PER 3,000 SF, 75' TRAVEL DISTANCE MAX.) - 2-REQUIRED			
TABLE 602			
FIRE RESISTIVE RATING REQUIREMENTS FOR EXTERIOR WALLS BASED ON FIRE SEPARATION DISTANCE			
FIRE SEPARATION DISTANCE	TYPE OF CONSTRUCTION	OCCUPANCY M	OCCUPANCY A,B,E,F-2,U,S-2,U
x<5	ALL	2	1
	OTHERS	1	1
5<x<10	I-A	2	1
	OTHERS	1	1
10<x<30	I-A, I-B	1	0
	II-C, III-B	0	0
x>30	ALL	0	0

GENERAL NOTE
907.2.13.1.2 DUCT SMOKE DETECTION. DUCT SMOKE DETECTORS COMPLYING WITH SECTION 907.4.1 SHALL BE LOCATED AS FOLLOWS:
1. IN THE MAIN RETURN AIR AND EXHAUST AIR FLENUM OF EACH AIR-CONDITIONING SYSTEM HAVING A CAPACITY GREATER THAN 2,000 CUBIC FEET PER MINUTE (CFM) (0.94 M³/S). SUCH DETECTORS SHALL BE LOCATED IN A SERVICEABLE AREA DOWNSTREAM OF THE LAST DUCT INLET.
2. AT EACH CONNECTION TO A VERTICAL DUCT OR RISER SERVING TWO OR MORE STORES FROM A RETURN AIR DUCT OR FLENUM OF AN AIR-CONDITIONING SYSTEM. IN GROUP R-1 AND R-2 OCCUPANCIES, A SMOKE DETECTOR IS ALLOWED TO BE USED IN EACH RETURN AIR RISER CARRYING NOT MORE THAN 5,000 CFM (2.4 M³/S) AND SERVING NOT MORE THAN 10 AIR-INLET OPENINGS.

- GENERAL NOTES FOR FIRE PROTECTION SYSTEMS**
- FIRE SPRINKLER SHOP DRAWINGS SHALL BE SUBMITTED TO THE ALBUQUERQUE FIRE MARSHAL'S OFFICE FOR REVIEW AND APPROVAL OF ANY INSTALLATION OR MODIFICATION TO THE FIRE SPRINKLER SYSTEM, FIRE ALARM SYSTEM, KITCHEN SUPPRESSION SYSTEM OR ANY OTHER FIRE RELATED SYSTEM
 - THE FIRE SPRINKLER SYSTEM WILL BE SUPERVISED WHEN REQUIRED BY THE 2015 INTERNATIONAL FIRE CODE



FLOOR PLAN - FIRE 2
SCALE: 1/8" = 1'-0"