



Downtown Walla Walla Retail Space

115 E Main St, Walla Walla, WA 99362



Todd Wright

Windermere Real Estate/ Walla Walla
202 S First Ave, Walla Walla, WA 99362
toddwright@windermere.com
(509) 525-2151



Downtown Walla Walla Retail Space

\$16.00 /SF/YR

Located in the heart of downtown, this retail space offers outstanding visibility with a storefront facing the downtown core. Features include a mezzanine level for additional workspace or storage, excellent front-building signage, pull up door access off alley, and a versatile layout ready to be customized to suit your business needs. An exceptional opportunity in a sought-after location. Mezzanine square footage of 600 sq ft is in addition to the 6,000 sq ft retail space. Currently setup as a small apartment without kitchen. It can be used for office space or storage....

- Heavy daytime foot traffic
- Mezzanine
- Signage on front of building facing Main Street

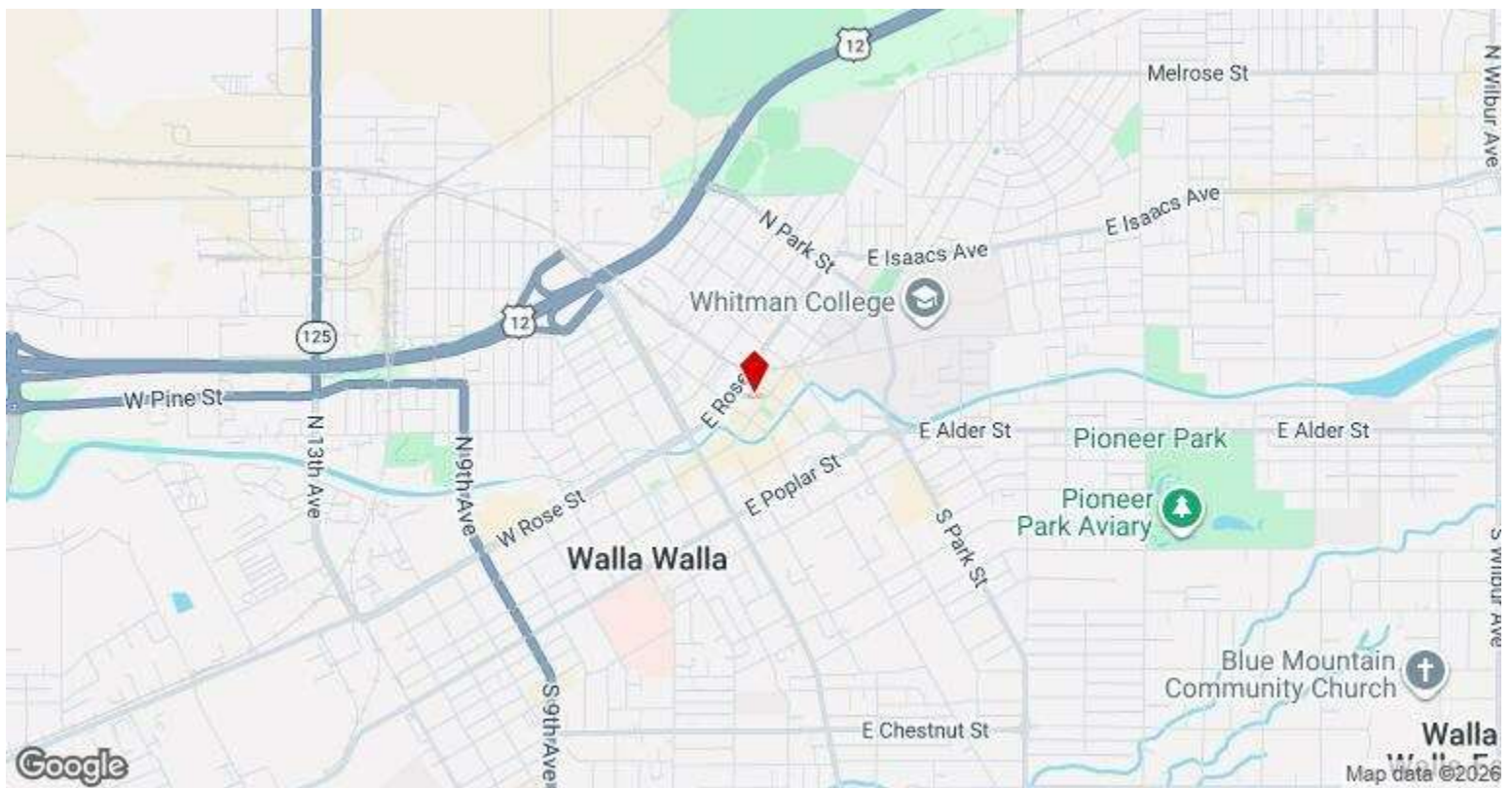


Rental Rate:	\$16.00 /SF/YR
Property Type:	Retail
Gross Leasable Area:	6,000 SF
Year Built:	1920
Walk Score ©:	80 (Very friendly)
Transit Score ©:	30 (Somewhat friendly)
Taxes:	\$0.11 USD/SF/MO
Operating Expenses:	\$0.00 USD/SF/MO
Rental Rate Mo:	\$1.33 /SF/MO

1st Floor

Space Available	6,000 SF
Rental Rate	\$16.00 /SF/YR
Date Available	November 16, 2026
Service Type	Triple Net (NNN)
Space Type	Relet
Space Use	Retail
Lease Term	Negotiable

Located in the heart of downtown, this retail space offers outstanding visibility with a storefront facing the downtown core. Features include a mezzanine level for additional workspace or storage, excellent front-building signage, pull up door access off alley, and a versatile layout ready to be customized to suit your business needs. An exceptional opportunity in a sought-after location.



115 E Main St, Walla Walla, WA 99362

Located in the heart of downtown, this retail space offers outstanding visibility with a storefront facing the downtown core. Features include a mezzanine level for additional workspace or storage, excellent front-building signage, pull up door access off alley, and a versatile layout ready to be customized to suit your business needs. An exceptional opportunity in a sought-after location. Mezzanine square footage of 600 sq ft is in addition to the 6,000 sq ft retail space. Currently setup as a small apartment without kitchen. It can be used for office space or storage.

Property Photos



Photo Jun 30 2026, 10 28 29 AM



Photo Jun 30 2026, 10 28 16 AM

Property Photos



Property Photos



Photo Jun 30 2026, 10 31 53 AM

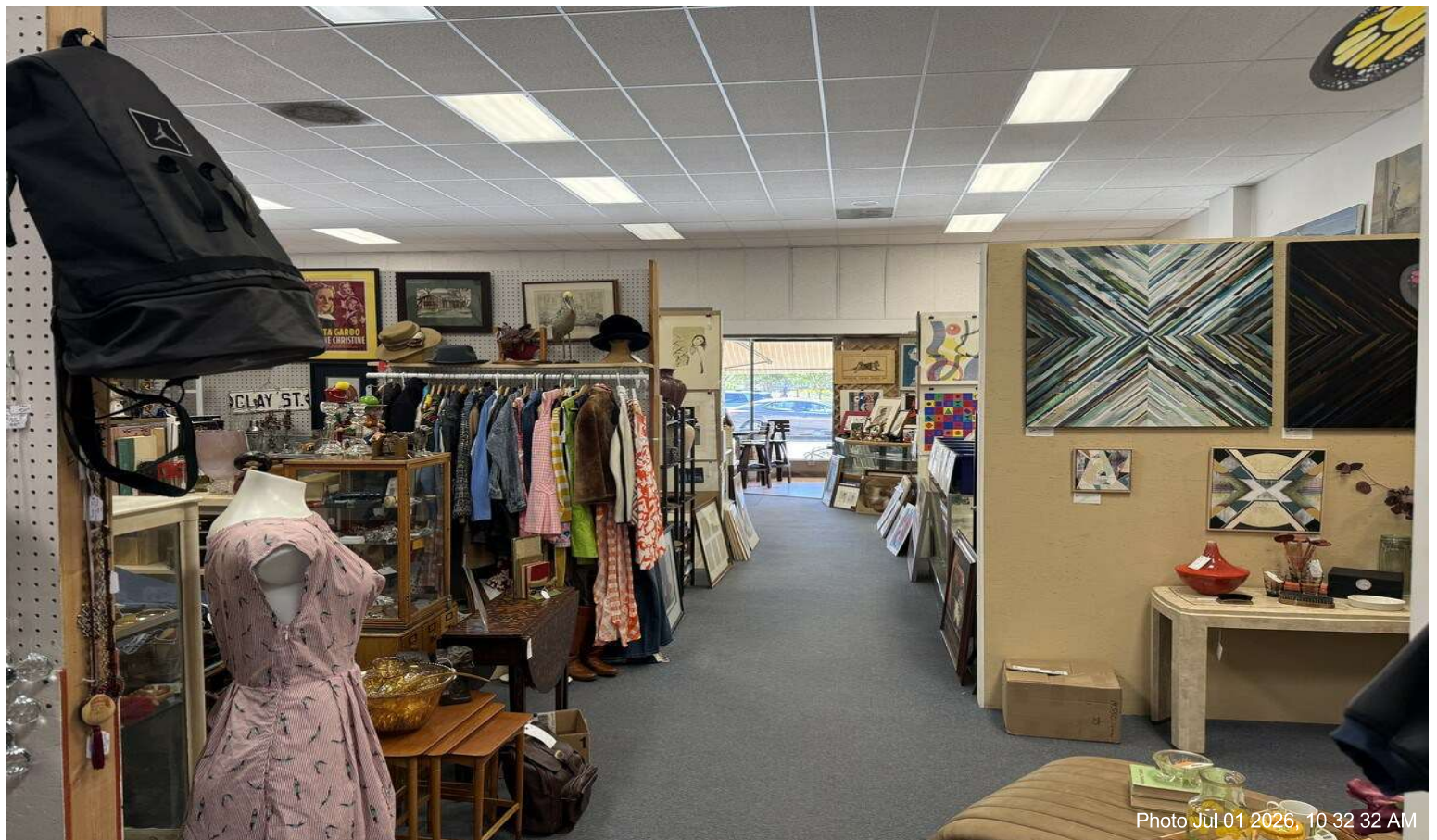
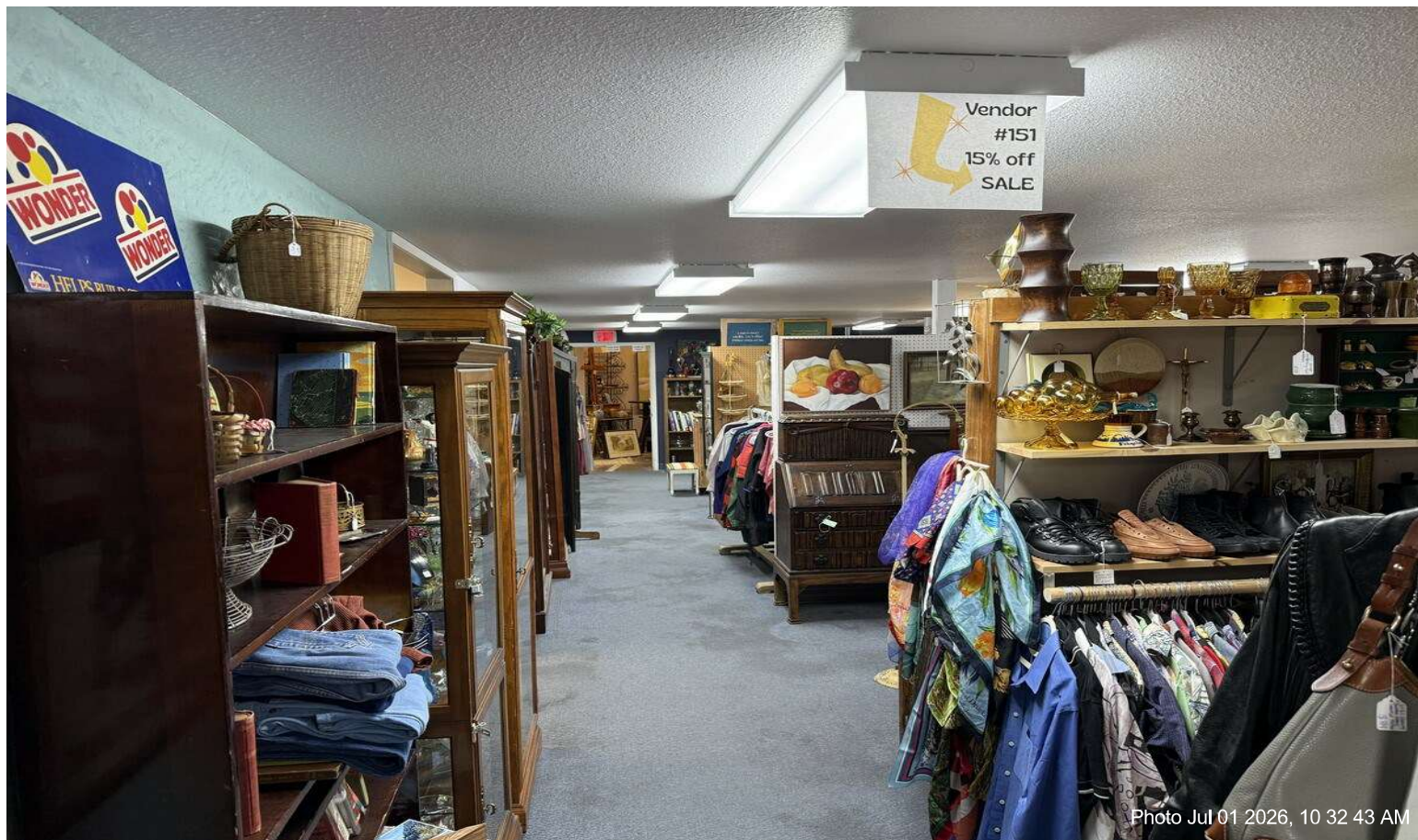


Photo Jul 01 2026, 10 32 32 AM

Property Photos



Property Photos

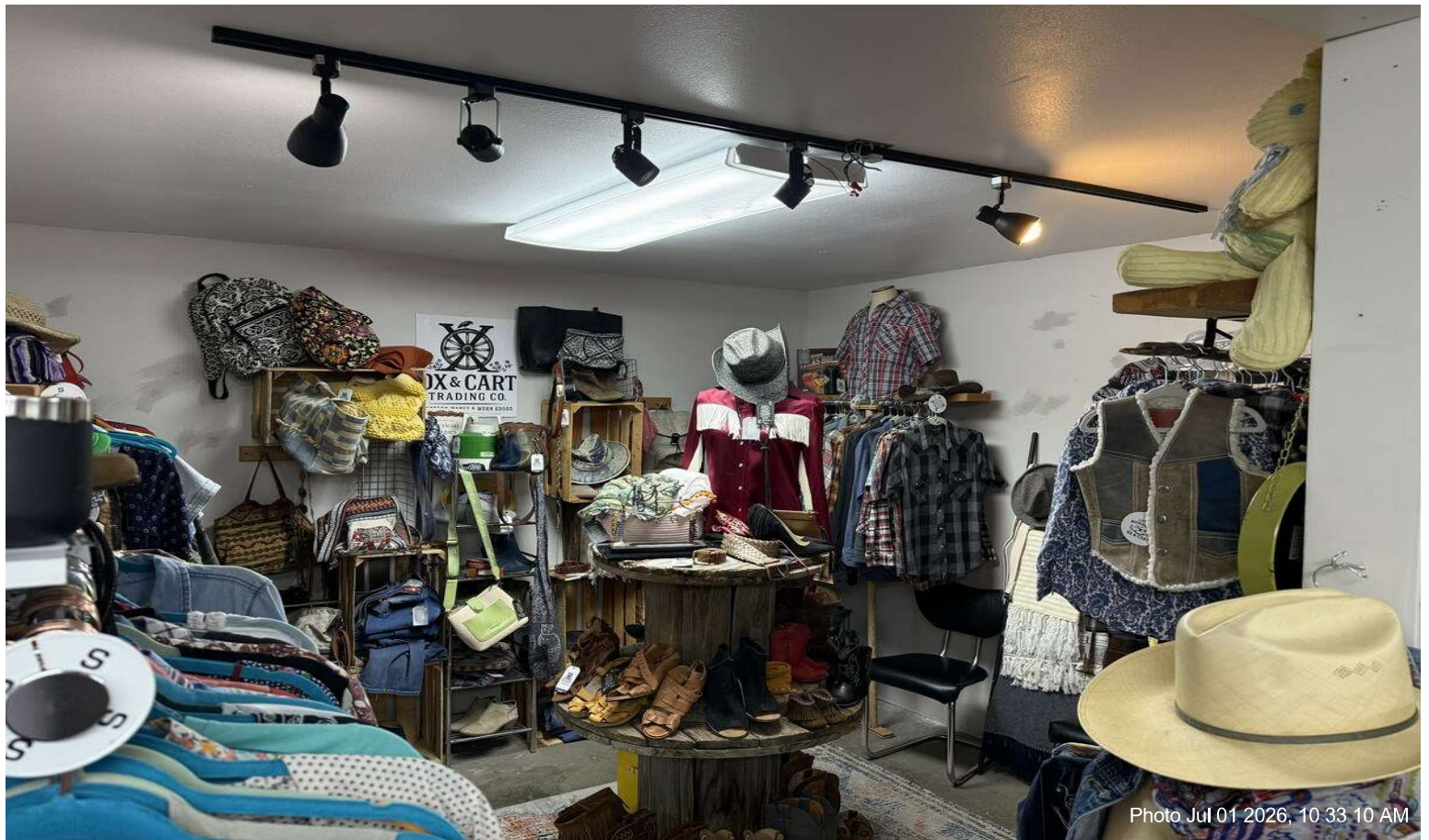


Photo Jul 01 2026, 10 33 10 AM

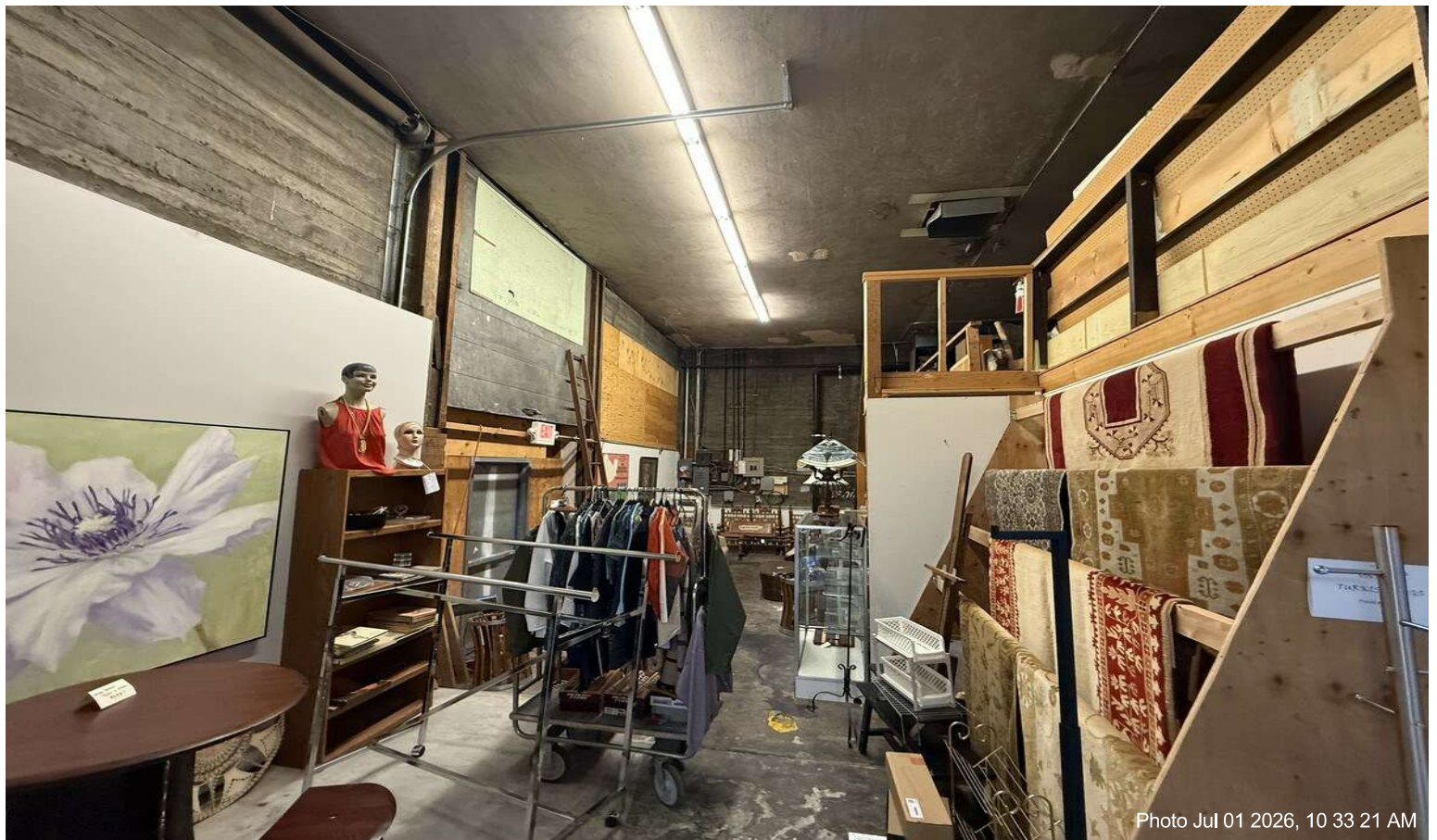


Photo Jul 01 2026, 10 33 21 AM

Property Photos



Photo Jul 01 2026, 10 33 37 AM



Photo Jul 01 2026, 10 34 11 AM

Property Photos

