



FOR LEASE



OFFICE BUILDING



285 SF



# 1260 Huntington Drive

South Pasadena, California 91030

SPACES	LEASE RATE	SPACE SIZE
Suite 201 D	Negotiable	285 SF

## Property Description

- Excellent Huntington Drive property located near Fremont Avenue and Fair Oaks Avenue.
- Abundant amenities nearby.
- Rare small office spaces.
- Easy access to 110 and 710 Freeways.
- Immediate Occupancy.
- 2nd Floor Suite (no elevator).

## Property Highlights

Rare South Pasadena Office Space.

**Tina LaMonica, SIOR**  
Executive Vice President | 626.204.1523  
tlamonica@naicapital.com | CalDRE #01841057



www.naicapital.com

©NAI CAPITAL COMMERCIAL, INC. CONTENT IN THIS DOCUMENT MAY INCLUDE AI GENERATED OR ALTERED TEXT, IMAGES AND/OR ANALYSIS. NO WARRANTY, EXPRESS OR IMPLIED, IS MADE AS TO THE ACCURACY OF THE INFORMATION CONTAINED HEREIN. THIS INFORMATION IS SUBMITTED SUBJECT TO ERRORS, OMISSIONS, CHANGE OF PRICE, RENTAL OR OTHER CONDITIONS, WITHDRAWAL WITHOUT NOTICE, AND IS SUBJECT TO ANY SPECIAL LISTING CONDITIONS IMPOSED BY OUR PRINCIPALS, COOPERATING BROKERS, BUYERS, TENANTS AND OTHER PARTIES WHO RECEIVE THIS DOCUMENT SHOULD NOT RELY ON IT, BUT SHOULD USE IT AS A STARTING POINT OF ANALYSIS, AND SHOULD INDEPENDENTLY CONFIRM THE ACCURACY OF THE INFORMATION CONTAINED HEREIN THROUGH A DUE DILIGENCE REVIEW OF THE BOOKS, RECORDS, FILES AND DOCUMENTS THAT CONSTITUTE RELIABLE SOURCES OF THE INFORMATION DESCRIBED HEREIN. UNEDITED IMAGES VIEWABLE AT NAICAPITAL.COM | CAL DRE LIC #02130474



FOR LEASE



OFFICE BUILDING



285 SF



**Tina LaMonica, SIOR**  
Executive Vice President | 626.204.1523  
tlamonica@naicapital.com | CalDRE #01841057



[www.naicapital.com](http://www.naicapital.com)

©NAI CAPITAL COMMERCIAL, INC. CONTENT IN THIS DOCUMENT MAY INCLUDE AI GENERATED OR ALTERED TEXT, IMAGES AND/OR ANALYSIS. NO WARRANTY, EXPRESS OR IMPLIED, IS MADE AS TO THE ACCURACY OF THE INFORMATION CONTAINED HEREIN. THIS INFORMATION IS SUBMITTED SUBJECT TO ERRORS, OMISSIONS, CHANGE OF PRICE, RENTAL OR OTHER CONDITIONS, WITHDRAWAL WITHOUT NOTICE, AND IS SUBJECT TO ANY SPECIAL LISTING CONDITIONS IMPOSED BY OUR PRINCIPALS. COOPERATING BROKERS, BUYERS, TENANTS AND OTHER PARTIES WHO RECEIVE THIS DOCUMENT SHOULD NOT RELY ON IT, BUT SHOULD USE IT AS A STARTING POINT OF ANALYSIS, AND SHOULD INDEPENDENTLY CONFIRM THE ACCURACY OF THE INFORMATION CONTAINED HEREIN THROUGH A DUE DILIGENCE REVIEW OF THE BOOKS, RECORDS, FILES AND DOCUMENTS THAT CONSTITUTE RELIABLE SOURCES OF THE INFORMATION DESCRIBED HEREIN. UNEDITED IMAGES VIEWABLE AT NAICAPITAL.COM | CAL DRE LIC #02130474



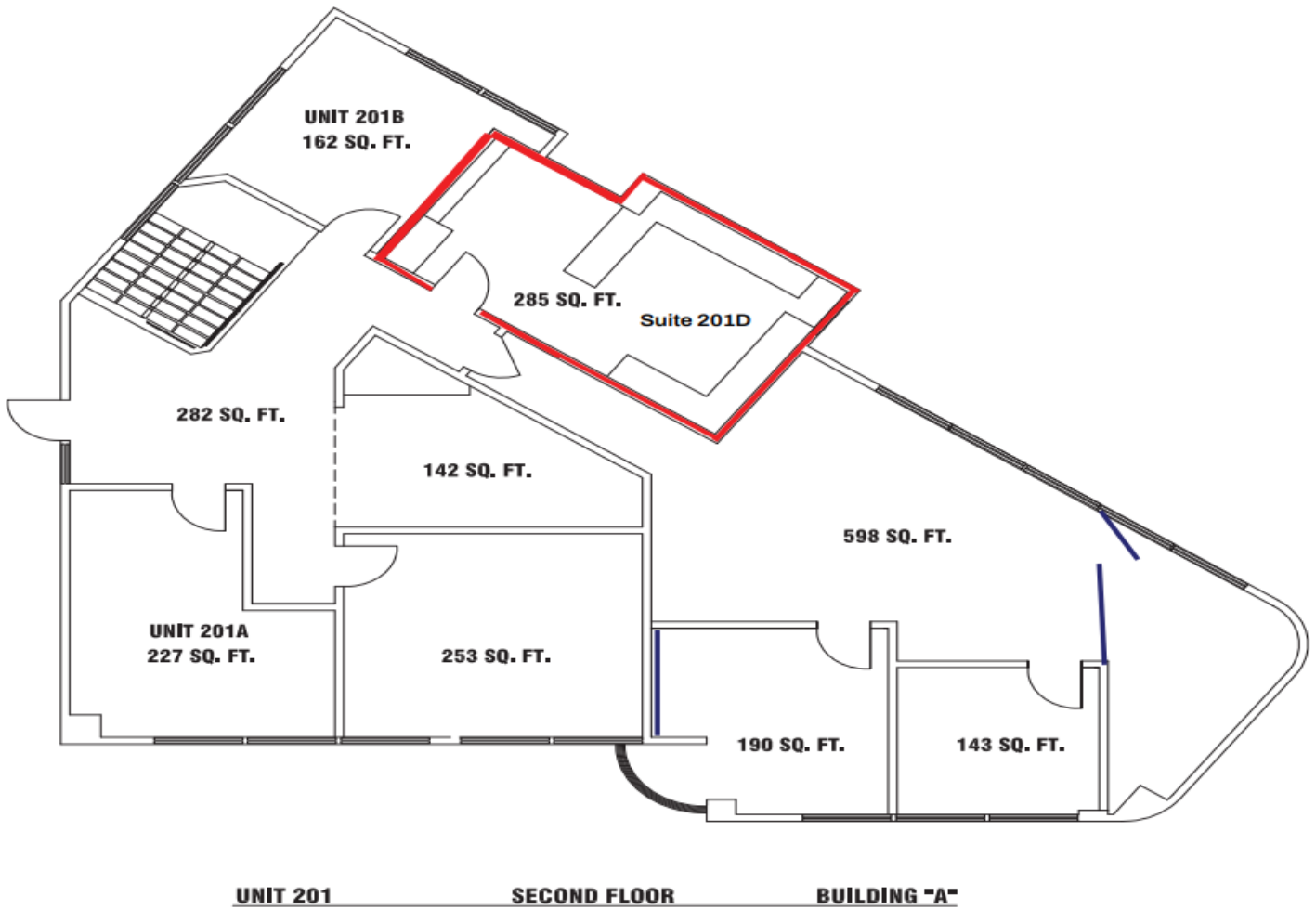
FOR LEASE



OFFICE BUILDING



285 SF



**Tina LaMonica, SIOR**

Executive Vice President | 626.204.1523

tlamonica@naicapital.com | CalDRE #01841057

