

Park Industrial Village Building C - Suite 200

4,806 SF Available

2010 East Center Circle #200
Plymouth, MN 55441



Contact Us

**TOM
BENNETT**

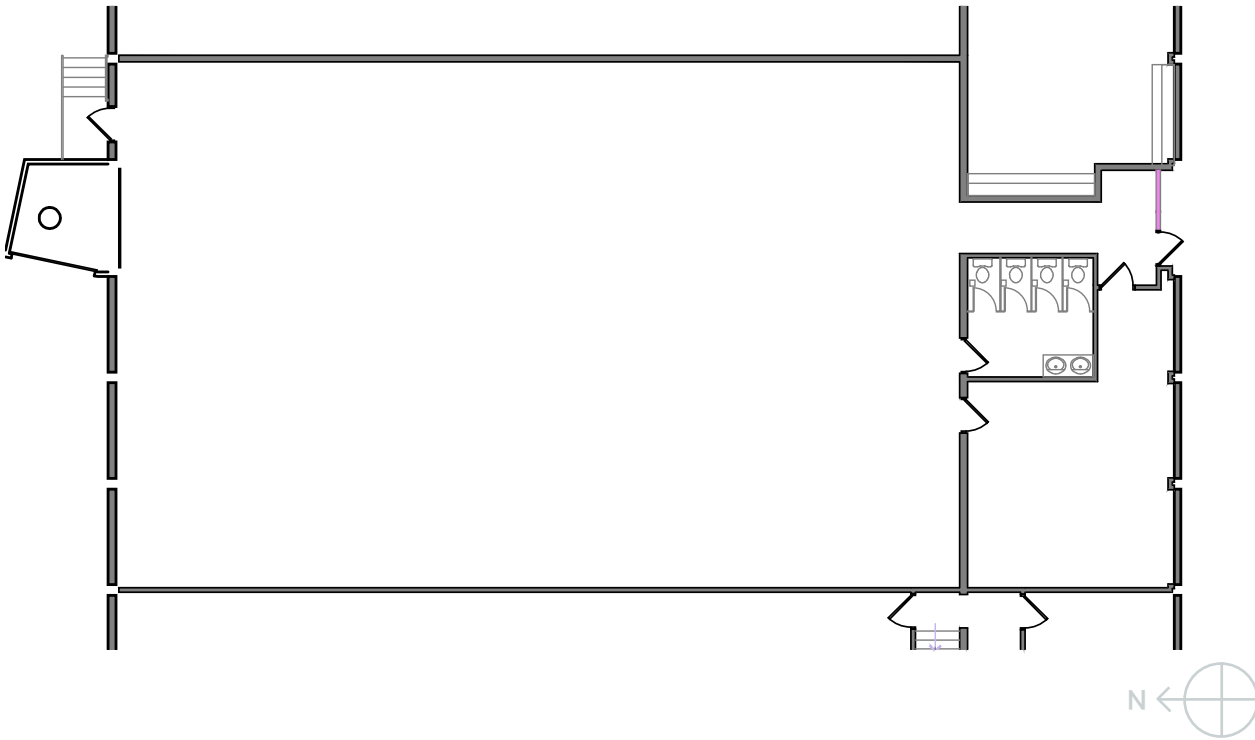
+1 612 386 6108

tom.bennett@cbre.com

**PARKER
RICKERT**

+1612 845 8022

parker.rickert@cbre.com



Overview

Park Industrial Village is strategically located for both Northwest and Southwest users. Accessed via I-494 & Highway 55, Building C (a free-standing building), has a new roof & tuck pointing, and rare 20' clearance height.

4,806

Available SF

Lease Rates

+ Negotiable

2025 Est. Re Tax/CAM

+ \$4.17 PSF

Total Building Area

+ 20,248

Available SF

+ 4,806 SF Total

+ 4,175 SF Warehouse

+ 651 SF Office

Land

+ 16.75 acres

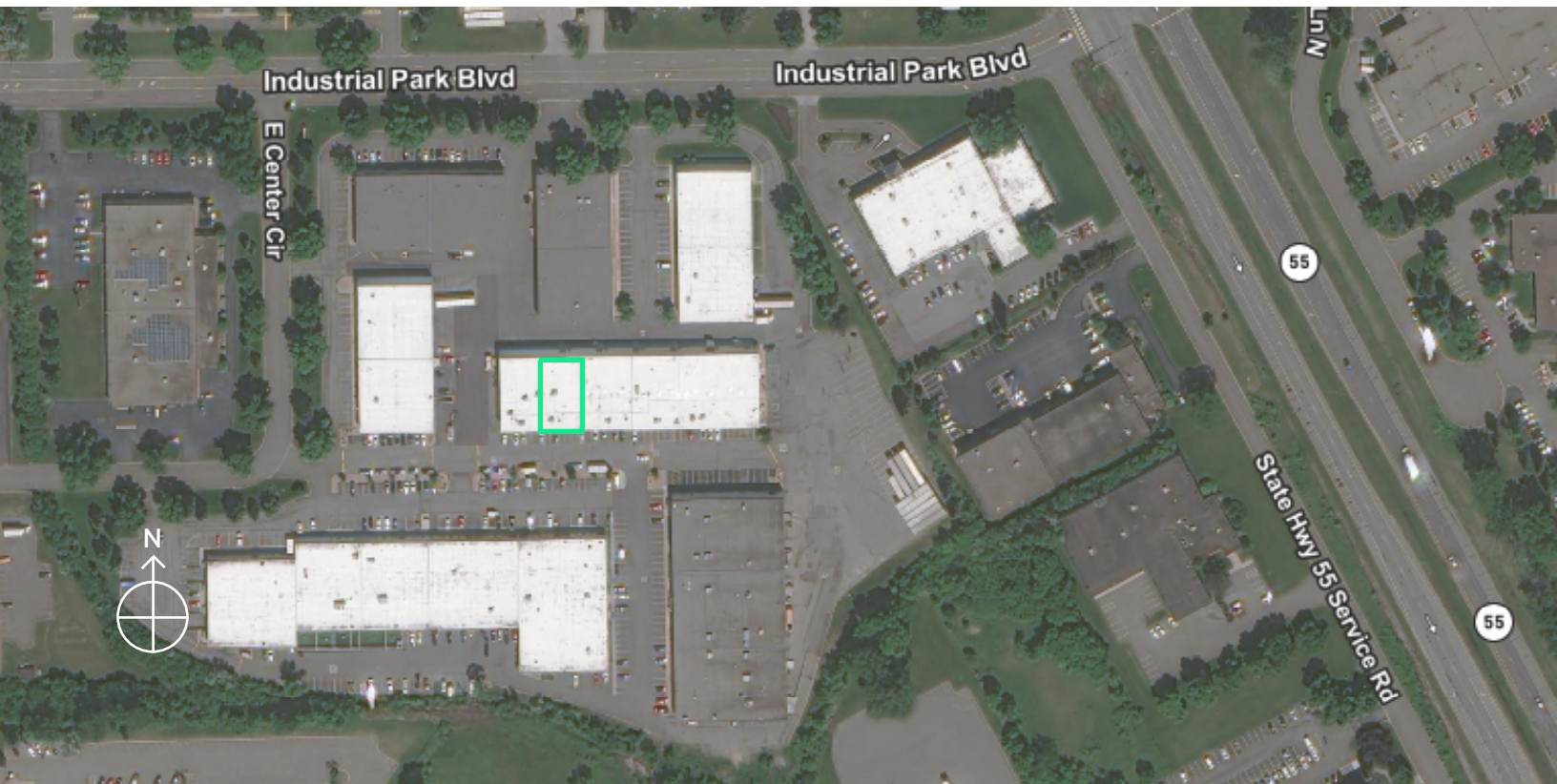
Loading

+ 1 dock

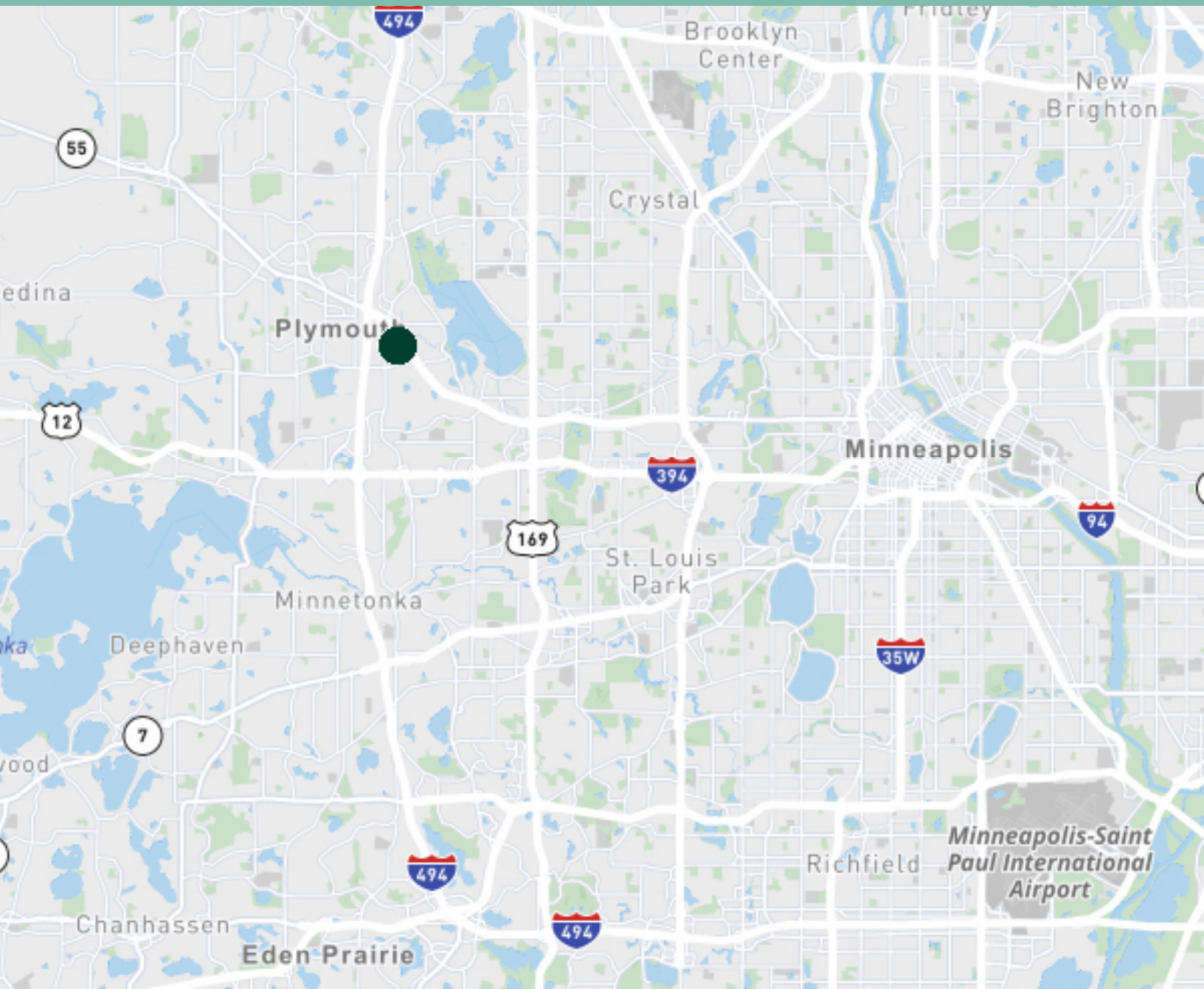
Year Built

+ 1979

Rare 20' clear height



Excellent access to I-494 & Hwy 55



Contact Us

TOM BENNETT

+1 612 386 6108

tom.bennett@cbre.com

PARKER RICKERT

+1612 845 8022

parker.rickert@cbre.com