



CENTURY
MACHINERY
SALES • RENTALS
MACHINE TOOLS

SOUTH ARTS DISTRICT · LOS ANGELES

THE CENTURY AT SANTA FE

CREATIVE INDUSTRIAL CAMPUS · ESTABLISHED 1923

1923-1947 South Santa Fe Avenue · Los Angeles, CA 90021

FOUND.
REAL ESTATE

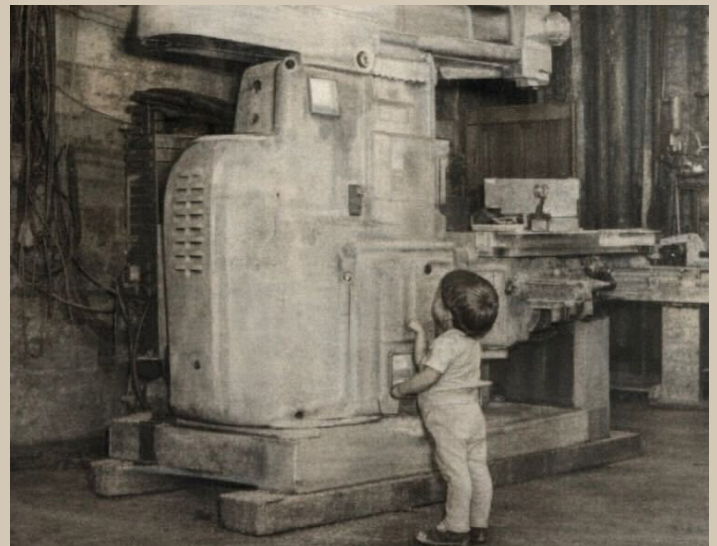
Nine Decades on Santa Fe Avenue

Once the heavy industrial engine of Los Angeles, the South Arts District corridor along Santa Fe Avenue has evolved into the city's premier cultural and creative hub. Today, the manufacturing footprint has given way to Michelin-recognized dining, blue-chip art galleries, and exclusive social clubs. Recent residential projects like AVA Arts District and Alloy have added a growing residential base, rounding out the area's transition to a true 24/7 live-work environment. This neighborhood provides a mature, high-end ecosystem attracting global media, tech, and luxury lifestyle brands.

For decades, the Century Machinery campus was a working factory floor. Oliver shapers, Cincinnati Bickford

drill presses, and band saws lined the showrooms. Kids grew up underfoot between the machines. The company's signage was hand-painted across the exterior walls by craftsmen working from ladders.

Today, those same structural bones make the property exceptional for a different kind of work. The bow-truss ceilings that once cleared industrial cranes now frame dramatic studio volumes. The concrete floors that absorbed tonnage anchor modern creative workspaces. And the South Arts District that grew up around the Century Machinery campus has become one of the most sought-after creative corridors in Los Angeles.



Built for Makers. Then and Now.

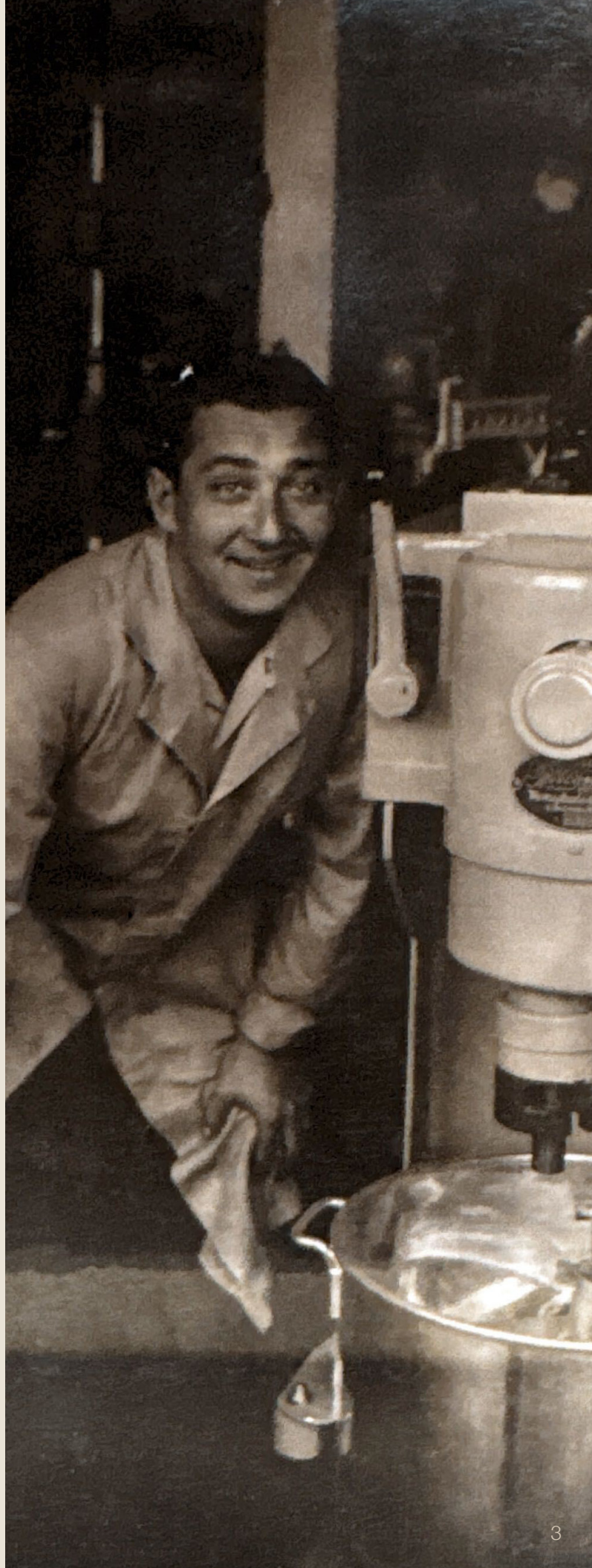
Century Machinery Co. opened its doors on South Santa Fe Avenue in 1934, selling, renting, and restoring heavy industrial machinery for the manufacturers that powered wartime and postwar Los Angeles. The campus, spanning 1923 to 1947 S. Santa Fe Avenue, was purpose-built for heavy equipment: bow-truss ceilings engineered for overhead crane loads, reinforced concrete floors designed to absorb the vibration of multi-ton milling machines, and 16-foot clear heights that accommodated the largest lathes and presses on the West Coast.

For nine decades, the Century Machinery campus was a working factory floor. It stood as the last machinery dealer on South Santa Fe Avenue, with clients ranging from local fabricators to Boeing and GE. Giant lathes, Oliver shapers, and Cincinnati Bickford drill presses lined the showrooms. Kids grew up underfoot between the machines. The company's signage was hand-painted across the exterior walls by craftsmen working from ladders.

Century Machinery was part of a broader industrial corridor. Along this stretch of Santa Fe, machine shops, a soap factory, and quarry operations supplied the stone and labor that built much of early downtown Los Angeles. Today, those same structural bones make the property exceptional for a different kind of work.

CURRENT AVAILABILITIES

SPACE	SIZE	RATE
Suite 300 1923 S. Santa Fe	4,400 SF	\$1.82/SF/MO
1937 S. Santa Fe	8,632 SF	\$1.74/SF/MO





FORMER CENTURY MACHINERY WORKSHOP

The original Century Machinery showroom and service floor. 8,632 SF of bow-truss volume with skylights, 16 ft clear heights, 400A 3-phase power, security and rooftop fencing, plus a 1,400 SF private outdoor patio.

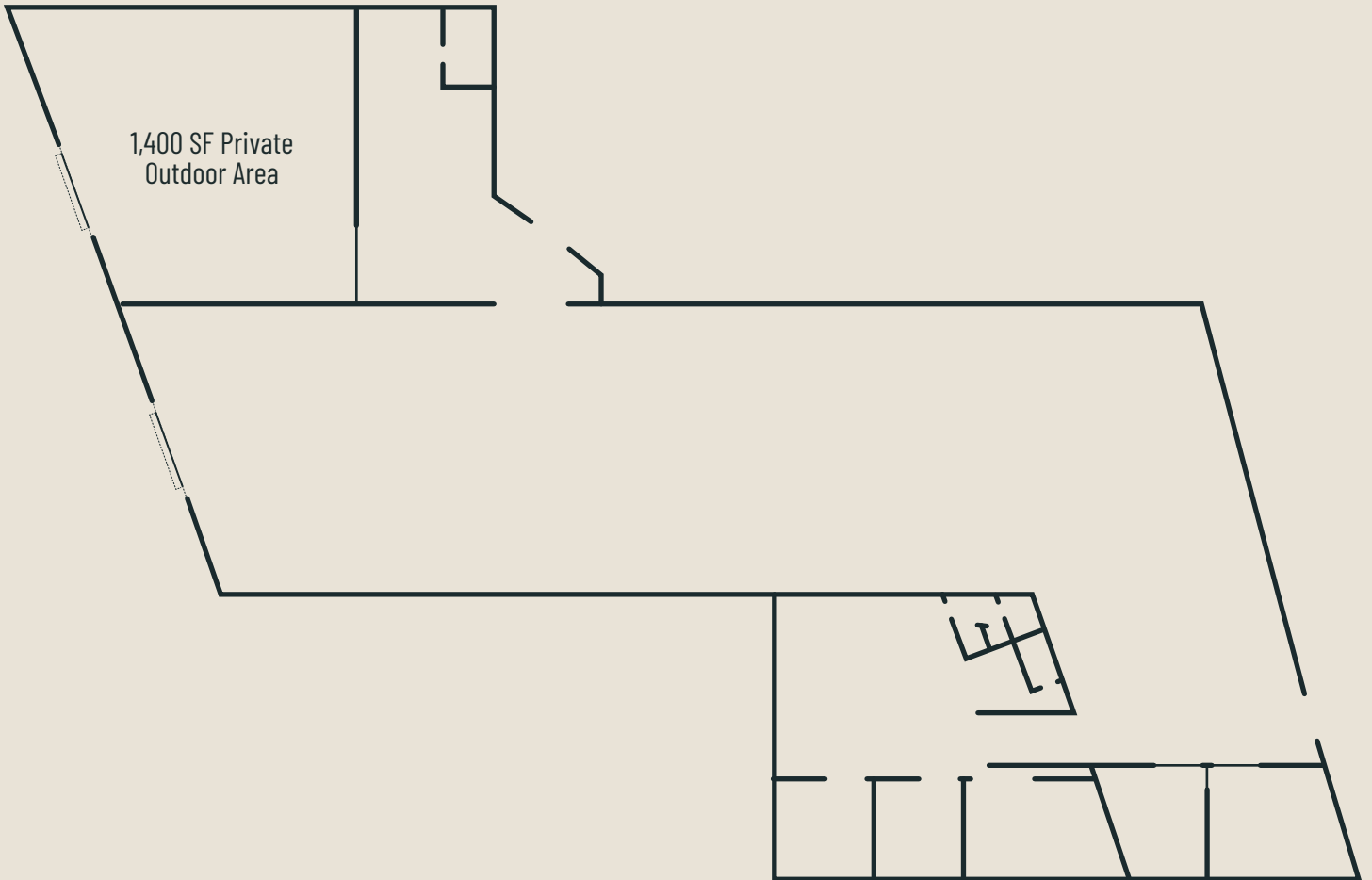
IDEAL FOR:

- CREATIVE HQ
- BRAND SHOWROOM
- PRODUCTION STUDIO
- CAFÉ CONCEPT

FLOOR PLAN

1937 S. SANTA FE AVENUE

1937 S. SANTA FE AVENUE · 8,632 SF

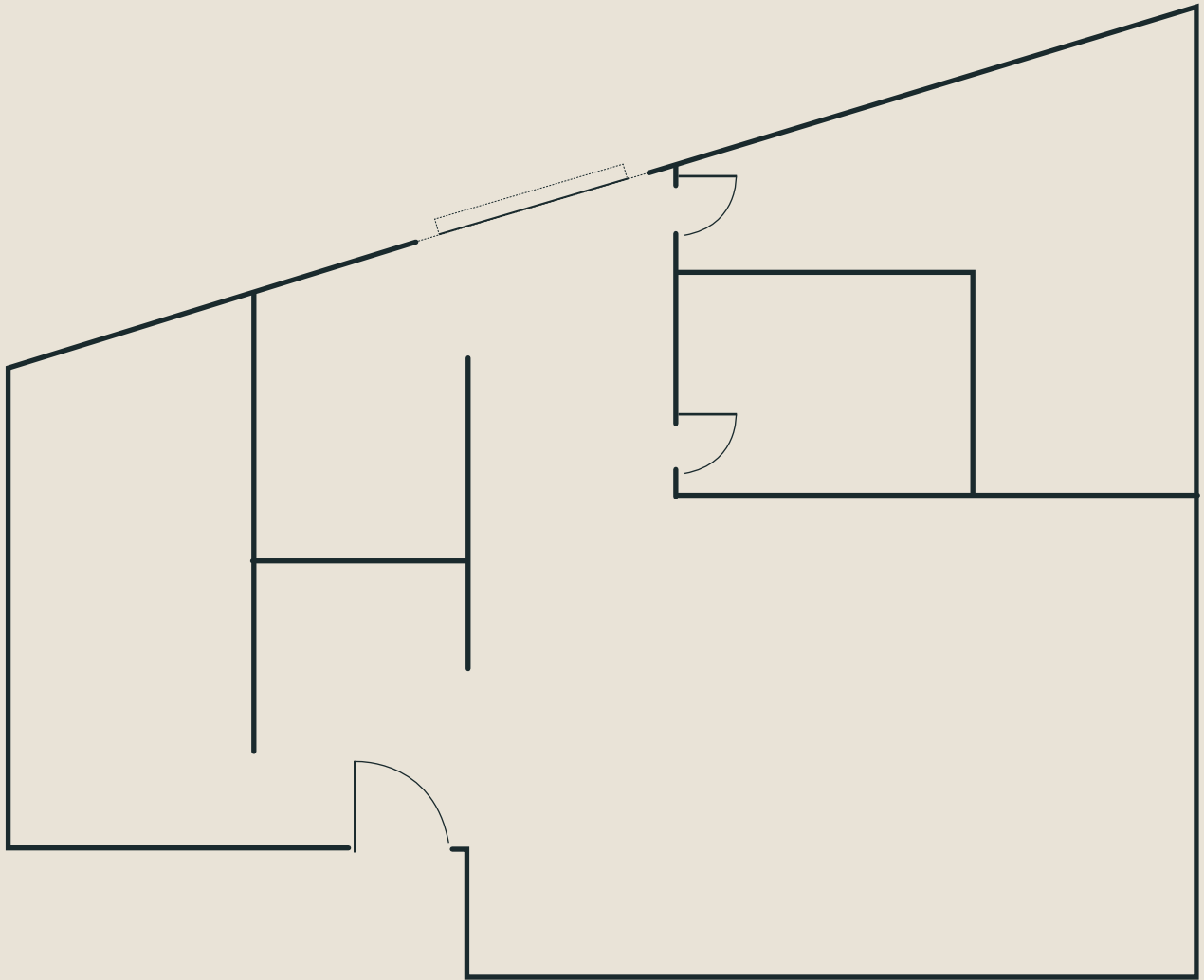




FLOOR PLAN

Suite 300

1923 S. SANTA FE AVENUE • 4,400 SF



THE NEIGHBORHOOD

Once the heavy industrial engine of Los Angeles, the South Arts District corridor along Santa Fe Avenue has evolved into the city's premier cultural and creative hub. Today, the manufacturing footprint has given way to Michelin-recognized dining, blue-chip art galleries, and exclusive social clubs. This neighborhood doesn't just offer workspace; it provides a mature, high-end ecosystem attracting global media, tech, and luxury lifestyle brands.



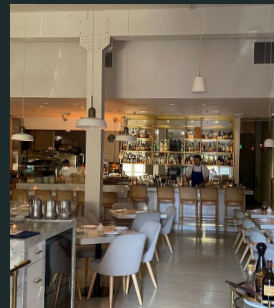
Bestia · 0.8 mi



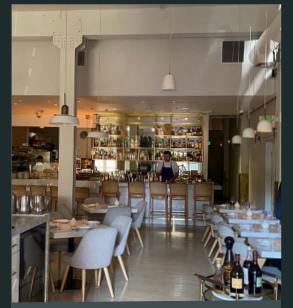
Kodō · 0.8 mi



Damian · 0.8 mi



Camphor · 1.7 mi



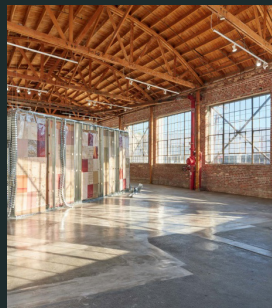
Bread Lounge · 0.9 mi



Soho Warehouse · 0.6 mi



Vielmetter Los Angeles · 0.1 mi



Night Gallery · 0.2 mi



Verve Coffee Roasters · 1.3 mi



Maru Coffee · 0.6 mi



Warner Music Group · 0.8 mi



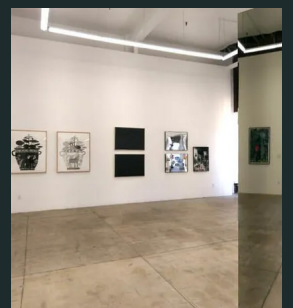
Hauser & Wirth · 1.7 mi



Dover Street Market · 1.1 mi



LA Boulders · 1.2 mi



Cirrus Gallery · 0.1 mi

THE CENTURY AT SANTA FE

1923–1947 South Santa Fe Avenue · Los Angeles, CA 90021

MATT MCLAUGHLIN
PRINCIPAL

matt@foundcre.com

310.694.3979

DOUG FILLMORE
PRINCIPAL

doug@foundcre.com

310.943.7169

CECILY JOYCE
DIRECTOR

cecily@foundcre.com

310.295.0234

Every effort has been made to accurately represent this property and its potential. However, all information and estimates provided are to be used for informational purposes only. They are not to be construed as an exact representation of the property or a prediction of future value. Potential lessees or buyers are advised to conduct a thorough investigation of the property independently. This brochure and the contents herein do not constitute a contract, warranty, or an offer, which can only be made by the property's legal owner. Images and depictions are for illustrative purposes only and may not represent current conditions or conveyance of the property.