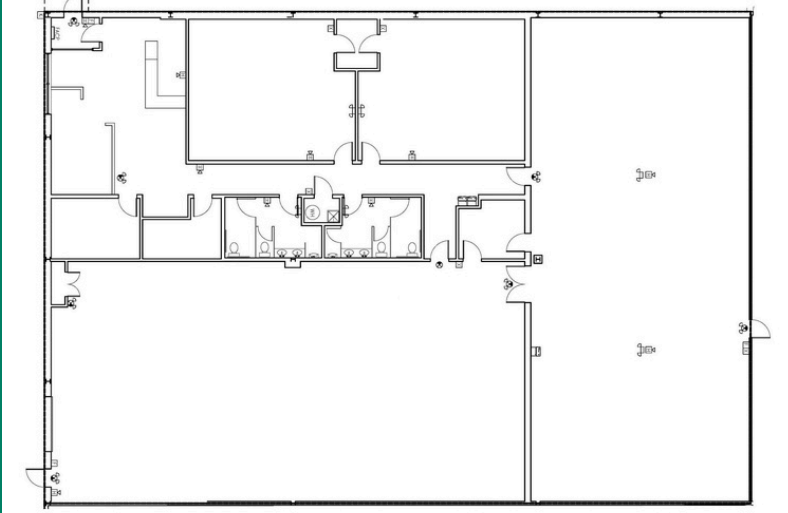


Shrewsbury Central Park

810 Boston Turnpike Road, Shrewsbury, MA



Property Highlights

- Convenient open parking
- Highly visible with prominent signage
- 2 Loading docks
- 1 drive-through door
- 18' clear height
- located right on Route 9
- halfway between Routes 20 and 140
- 6 miles from Interstate 495

BROKERS PROTECTED | FULL COMMISSION PAID



5,000 - 10,000 SF OFFERED AT \$15.95 NNN

PROFESSIONALLY
MANAGED BY:

Cutler
Management



Cheryl@CutlerManagement.com

Sarah@CutlerManagement.com

(508) 792-1111 X-101 or X-109

OFFICE | R&D | WAREHOUSE | MANUFACTURING