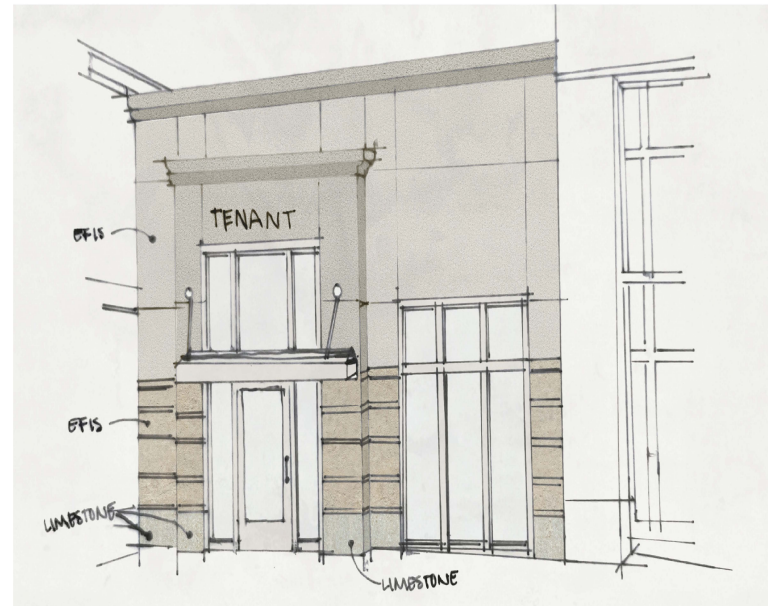


The Shoppes at Arbor Lakes

SUITE C4 | 2,110 RSF AVAILABLE



BUILDING C



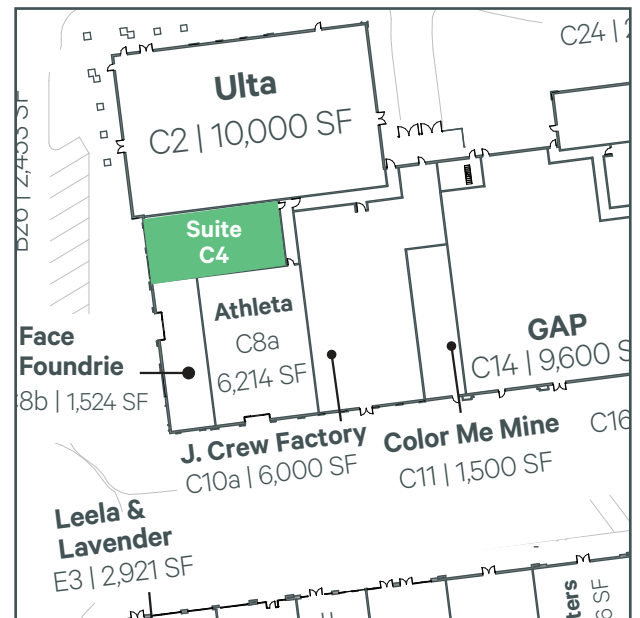
Suite C4

Address 12165 Elm Creek Blvd. N., Maple Grove, MN 55369

Area 2,110 RSF

SUITE HIGHLIGHTS

- + Incredible co-tenancy with Ulta, Face Foundrie and Lululemon
- + LL designed new storefront entry to be completed
- + Flexible interior based on shell condition
- + Direct storefront parking

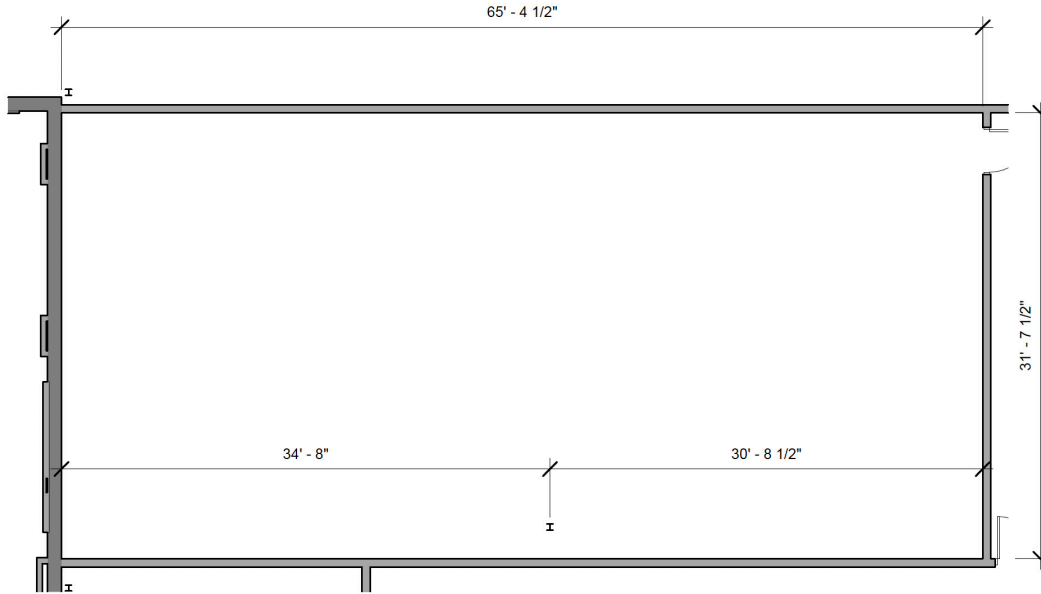


The Shoppes at Arbor Lakes

SUITE C4 | 2,110 RSF AVAILABLE

FLOOR PLAN

Suite C4 | 2,110 RSF



CONTACT US

Blake K. Bishop

Vice President
+1 503 720 7860
blake.bishop@cbre.com

Charlie Hexum

Vice President
+1 612 336 4275
charlie.hexum@cbre.com

Rob Wise

Vice President
+1 612 336 4274
rob.wise@cbre.com

CBRE, Inc.
4400 W. 78th Street, Ste. 200,
Bloomington, MN 55435

© 2024 CBRE, Inc. All rights reserved. This information has been obtained from sources believed reliable, but has not been verified for accuracy or completeness. You should conduct a careful, independent investigation of the property and verify all information. Any reliance on this information is solely at your own risk. CBRE and the CBRE logo are service marks of CBRE, Inc. All other marks displayed on this document are the property of their respective owners. Photos herein are the property of their respective owners and use of these images without the express written consent of the owner is prohibited.