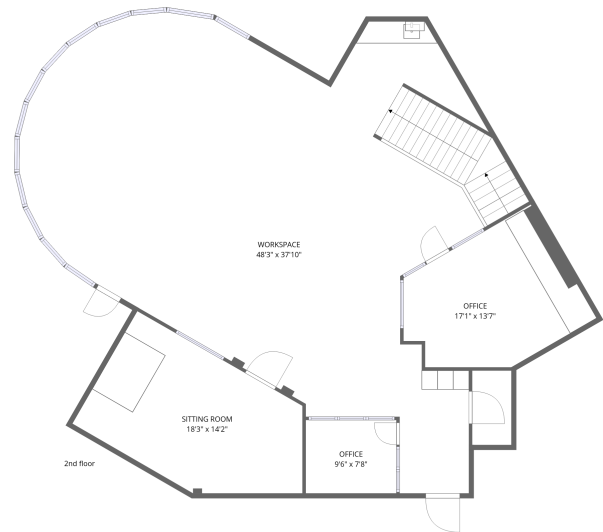


# 18001 State Highway 105, Montgomery, Texas 77356 Suite 110



**Total Area: 4120 sq. ft**

1st Floor: 1922 sq. ft, 2nd Floor: 2198 sq. ft

Excluded: Walls: 0 sq. ft

## Property summary



# 18001 State Highway 105, Montgomery, Texas 77356 Suite 110



## Room dimensions

Floor 1

Total:1922sqft Excluded: 0sqft

#		Dimensions	sqft	Counted as living area
1	Office	9'3" x 10'2"	95 sq. ft	Yes
2	Workspace	29'9" x 37'8"	853 sq. ft	Yes
3	Office	18'1" x 12'5"	226 sq. ft	Yes
4	Room	25'0" x 30'0"	701 sq. ft	Yes

# 18001 State Highway 105, Montgomery, Texas 77356 Suite 110



## Room dimensions

Floor 2

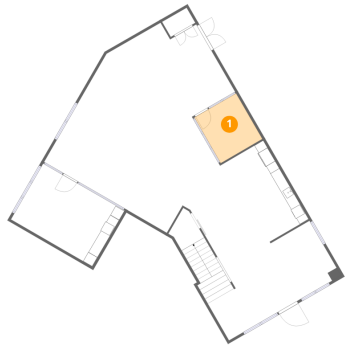
Total:2198sqft Excluded: 0sqft

#		Dimensions	sqft	Counted as living area
5	Office	9'6" x 7'8"	73 sq. ft	Yes
6	Conference Room	18'3" x 14'2"	287 sq. ft	Yes
7	Workspace	48'3" x 37'10"	1549 sq. ft	Yes
8	Office	17'1" x 13'7"	223 sq. ft	Yes

# 18001 State Highway 105, Montgomery, Texas 77356 Suite 110

## 1 Floor 1 - Office

---

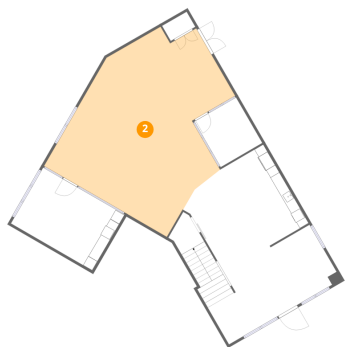


Dimensions: 9'3" x 10'2"  
Area: 95 sq. ft  
Counted as living area: Yes

Heated: Yes  
Finished: Yes  
Enclosed: Yes  
Contiguous: Yes  
Permitted: Yes  
Wet space: No  
Addition: No  
Conversion: No

## 2 Floor 1 - Workspace

---

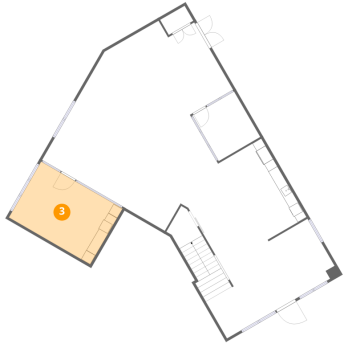


Dimensions: 29'9" x 37'8"  
Area: 853 sq. ft  
Counted as living area: Yes

Heated: Yes  
Finished: Yes  
Enclosed: Yes  
Contiguous: Yes  
Permitted: Yes  
Wet space: No  
Addition: No  
Conversion: No

# 18001 State Highway 105, Montgomery, Texas 77356 Suite 110

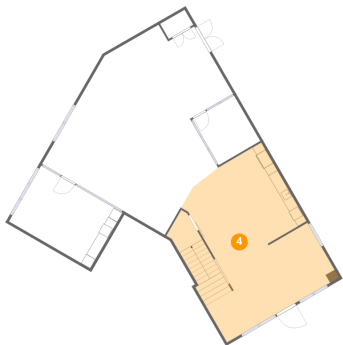
## 3 Floor 1 - Office



Dimensions: 18'1" x 12'5"  
Area: 226 sq. ft  
Counted as living area: Yes

Heated: Yes  
Finished: Yes  
Enclosed: Yes  
Contiguous: Yes  
Permitted: Yes  
Wet space: No  
Addition: No  
Conversion: No

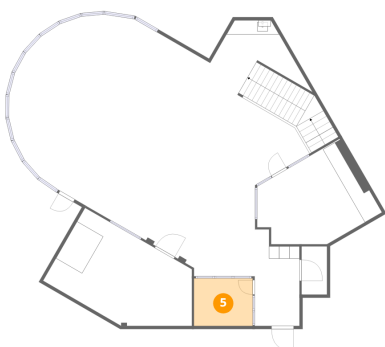
## 4 Floor 1 - Room



Dimensions: 25'0" x 30'0"  
Area: 701 sq. ft  
Counted as living area: Yes

Heated: Yes  
Finished: Yes  
Enclosed: Yes  
Contiguous: Yes  
Permitted: Yes  
Wet space: No  
Addition: No  
Conversion: No

## 5 Floor 2 - Office

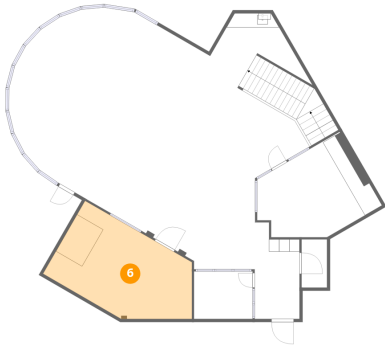


Dimensions: 9'6" x 7'8"  
Area: 73 sq. ft  
Counted as living area: Yes

Heated: Yes  
Finished: Yes  
Enclosed: Yes  
Contiguous: Yes  
Permitted: Yes  
Wet space: No  
Addition: No  
Conversion: No

# 18001 State Highway 105, Montgomery, Texas 77356 Suite 110

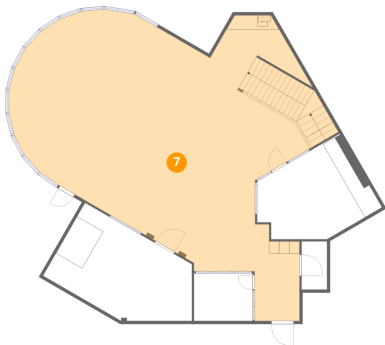
## 6 Floor 2 - Conference Room



Dimensions: 18'3" x 14'2"  
Area: 287 sq. ft  
Counted as living area: Yes

Heated: Yes  
Finished: Yes  
Enclosed: Yes  
Contiguous: Yes  
Permitted: Yes  
Wet space: No  
Addition: No  
Conversion: No

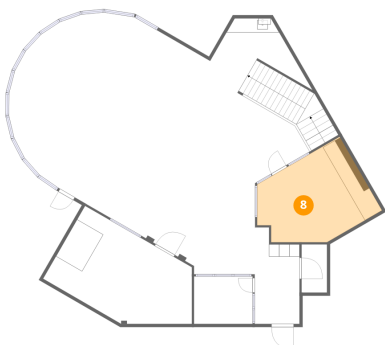
## 7 Floor 2 - Workspace



Dimensions: 48'3" x 37'10"  
Area: 1549 sq. ft  
Counted as living area: Yes

Heated: Yes  
Finished: Yes  
Enclosed: Yes  
Contiguous: Yes  
Permitted: Yes  
Wet space: No  
Addition: No  
Conversion: No

## 8 Floor 2 - Office



Dimensions: 17'1" x 13'7"  
Area: 223 sq. ft  
Counted as living area: Yes

Heated: Yes  
Finished: Yes  
Enclosed: Yes  
Contiguous: Yes  
Permitted: Yes  
Wet space: No  
Addition: No  
Conversion: No