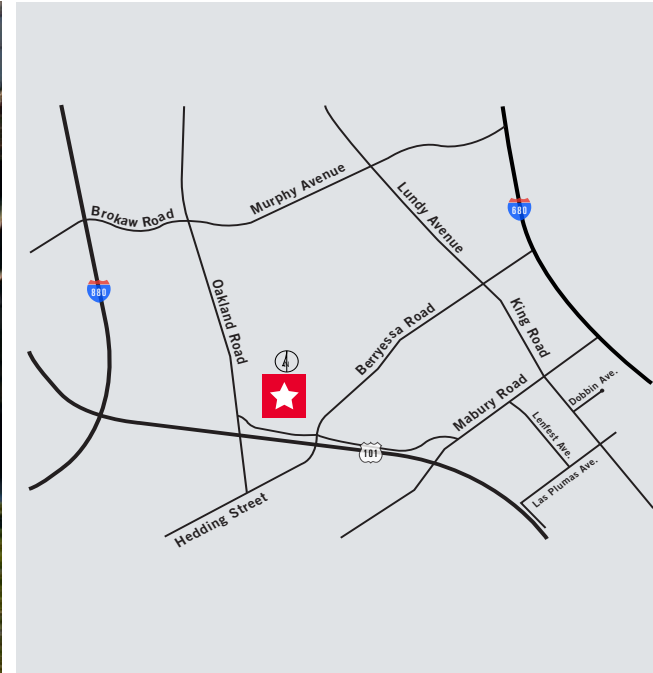




For Lease Freeway Business Park

761-765 Mabury Road, San Jose, California



FOR LEASE

761 MABURY

- ±1,000 SF (Unit 60)

765 MABURY

- ±2,200 SF

Project Highlights

- 13'4" Clear Height in Warehouse
- Great Access to Highways 101 & 880
- 2.65/1000 Parking
- Expansion Opportunity within Project

For more information, contact:

Jon DeCoite
Managing Director
P +1 408 615 3408
jon.decoite@cushwake.com
LIC #01471300

300 Santana Row, Fifth Floor
San Jose, California 95128
P +1 408 615 3400

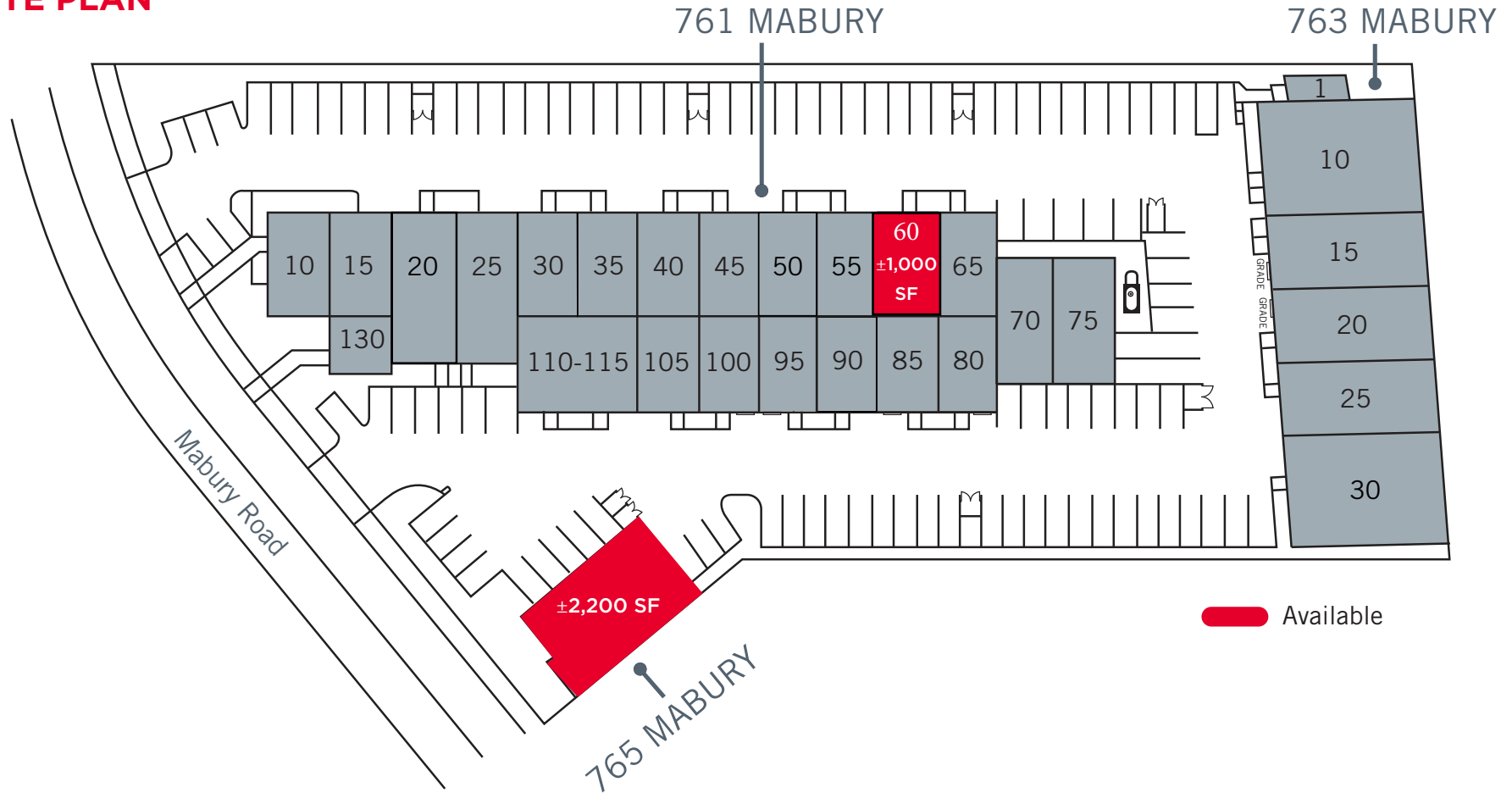
www.cushmanwakefield.com



For Lease Freeway Business Park

761-765 Mabury Road, San Jose, California

SITE PLAN



For more information, please contact:

Jon DeCoite
Managing Director
P +1 408 615 3408
jon.decoite@cushwake.com
LIC #01471300

300 Santana Row, Fifth Floor
San Jose, California 95128
P +1 408 615 3400

www.cushmanwakefield.com



For Lease Freeway Business Park

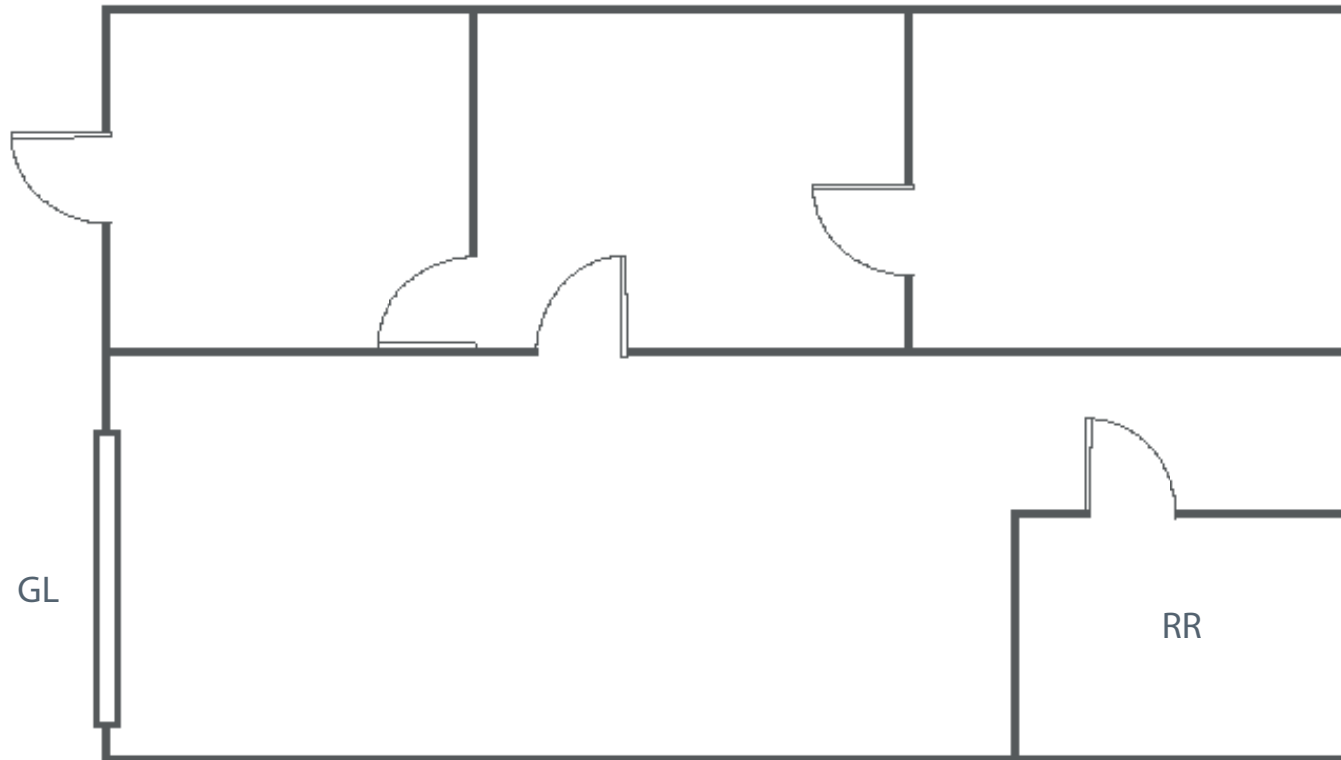
761-765 Mabury Road, San Jose, California

FLOOR PLAN

761 MABURY ROAD

UNIT 60

±1,000 SF



For more information, please contact:

Jon DeCoite
Managing Director
P +1 408 615 3408
jon.decoite@cushwake.com
LIC #01471300

300 Santana Row, Fifth Floor
San Jose, California 95128
P +1 408 615 3400

www.cushmanwakefield.com

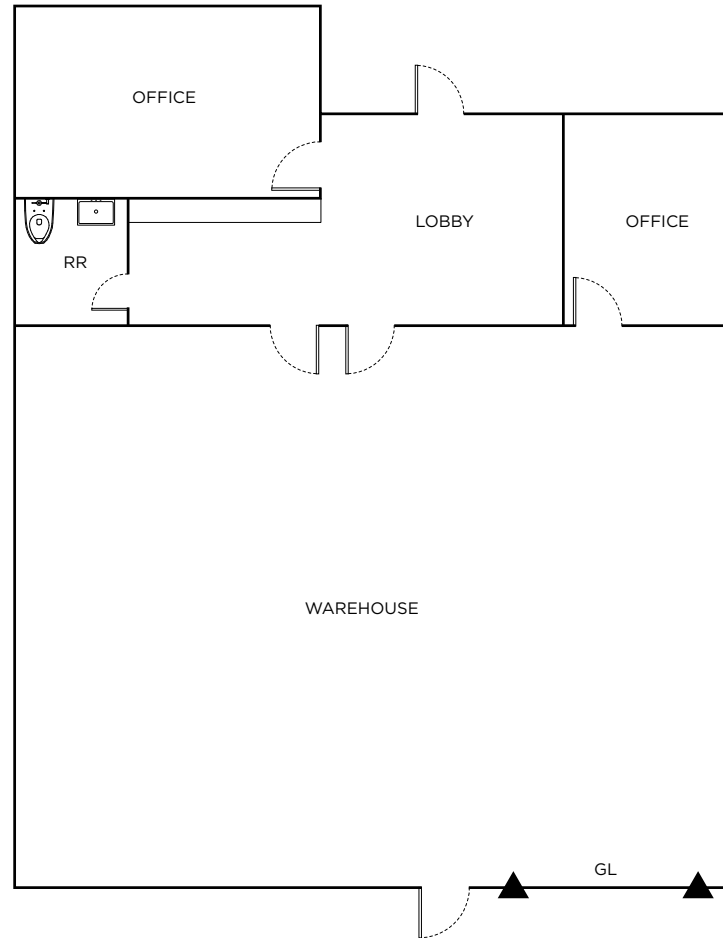


For Lease Freeway Business Park

761-765 Mabury Road, San Jose, California

FLOOR PLAN

765 MABURY ROAD
±2,200 SF



For more information, please contact:

Jon DeCoite
Managing Director
P +1 408 615 3408
jon.decoite@cushwake.com
LIC #01471300

300 Santana Row, Fifth Floor
San Jose, California 95128
P +1 408 615 3400

www.cushmanwakefield.com