

FOR LEASE

545 West 23rd Street

CHELSEA
NEW YORK, NY



Property Details

Location

North block between Tenth and Eleventh Avenues

Approximate Size

Ground Floor
Space A 1,318 SF
Space B 2,656 SF

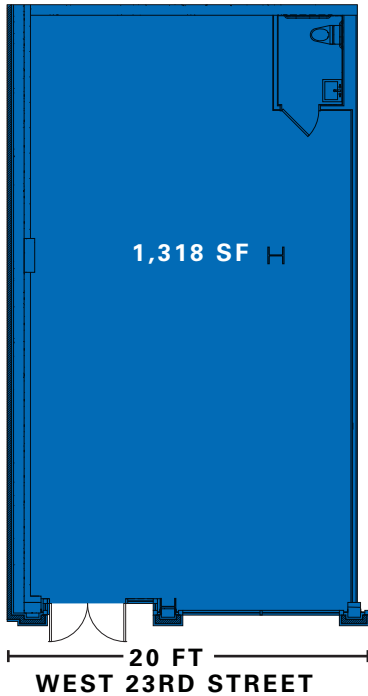
Ceiling Height

13 FT 4 IN

Frontage

Space A 20 FT on West 23rd Street
Space B 35 FT on West 23rd Street

Space A



Term

Negotiable

Possession

Space A Immediate
Space B October 2026

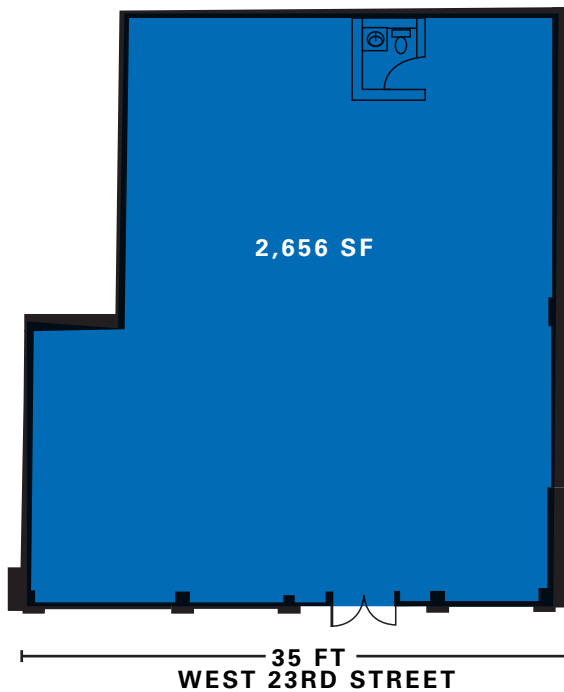
Site Status

Space A Formerly Chelsea Wine and Liquors
Space B Currently Detour Gallery

Rent

Upon request

Space B



Neighbors

Chelsea Piers, Avenues The World School, Sogno Toscano, Steven Alan, Nail Aug (coming soon), Joe & The Juice (coming soon), Cookshop, Cucina Alba, David Zwirner Gallery, Equinox, Hauser & Wirth, Jack Shaiman Gallery, Kurimanzutto, Gagosian Gallery, and Intelligentsia Coffee

Comments

At the base of a 337-unit luxury condo building

Space is also located in the the West Chelsea Gallery District, New York's most established Gallery District

Most uses accepted

Visible from the High Line with 8 million annual visitors and on the same block as a High Line entrance

Space A is a former liquor store with a former off-premises liquor license

Space B is a turnkey gallery space

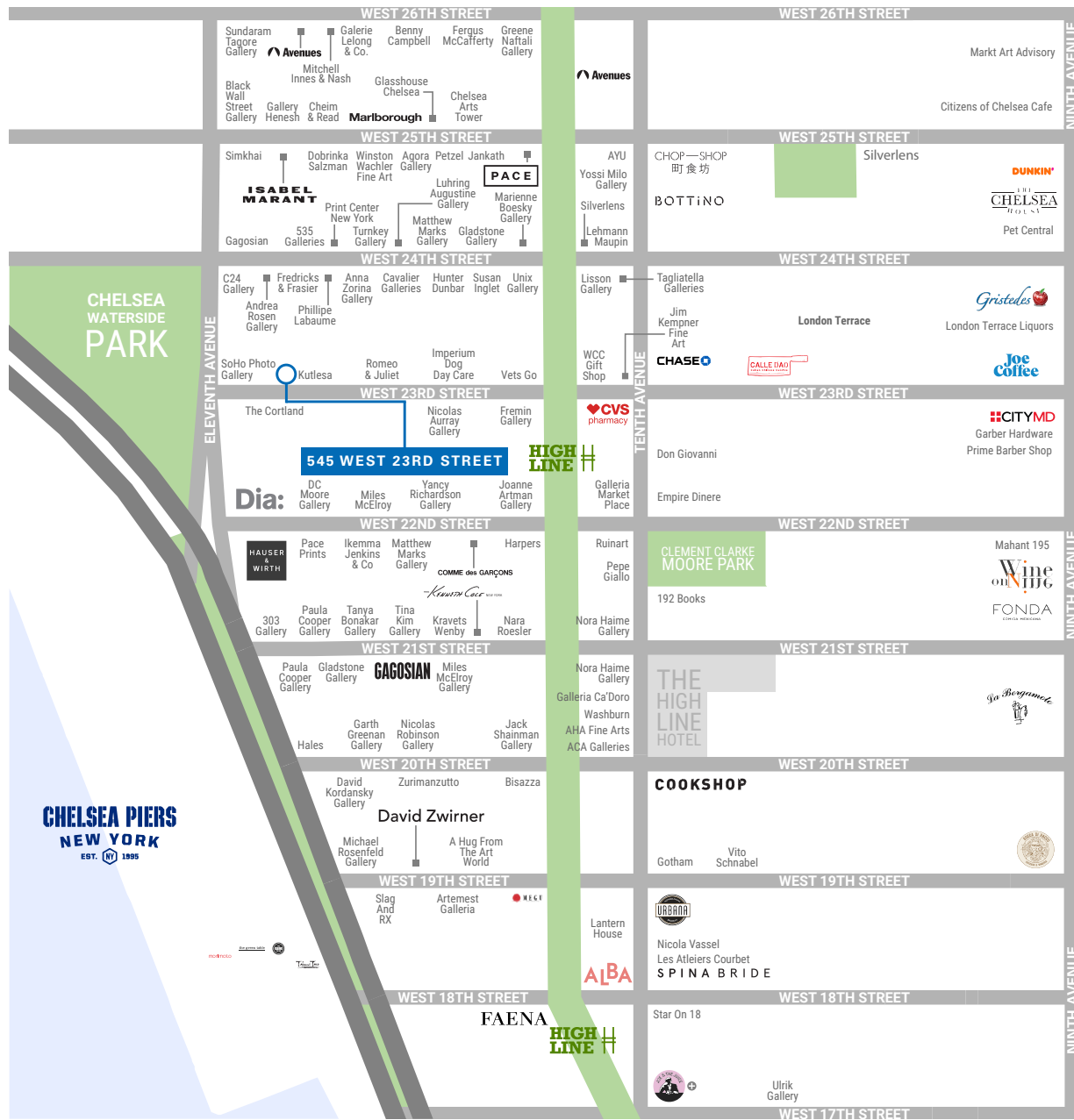
Space A - Interior Photos



Space B - Interior Photos



545 WEST 23RD STREET



CONTACT

Andrew Stern
 t 212-351-9353
 andrew.stern@nmrk.com

Ravi Idnani
 t 212-916-2938
 ravi.idnani@nmrk.com
 nmrk.com

©2026 NEWMARK Licensed in New York as Newmark Retail, Real Estate Broker
 The information contained herein has been obtained from sources deemed reliable but has not been verified and no guarantee, warranty or representation, either express or implied, is made with respect to such information. Terms of sale or lease and availability are subject to change or withdrawal without notice.