

DEQUINDRE PLAZA



20900 Dequindre Road, Warren, MI 48091

**CONCEPTUAL RENDERING*



Retail Opportunity
up to 36,432 ± SF

FOR LEASE

Description

Up to 36,432 ± SF available for lease in Warren, MI, positioned adjacent to County Line Trade Center. The space is currently under construction and will be fully refaced, delivering a modernized storefront within a high-performing retail corridor. The property benefits from strong traffic along Dequindre Rd, dense surrounding population, and above-average household incomes, all within an established center that provides consistent customer draw.

Address

20900 Dequindre Road
Warren, MI 48091

Features

- Up to 36,432 ± SF for Lease
- Zoned C1 - Local Business
- Pylon Signage Available
- Multiple Curb Cuts
- High Traffic Counts

Asking Rent

Contact Broker

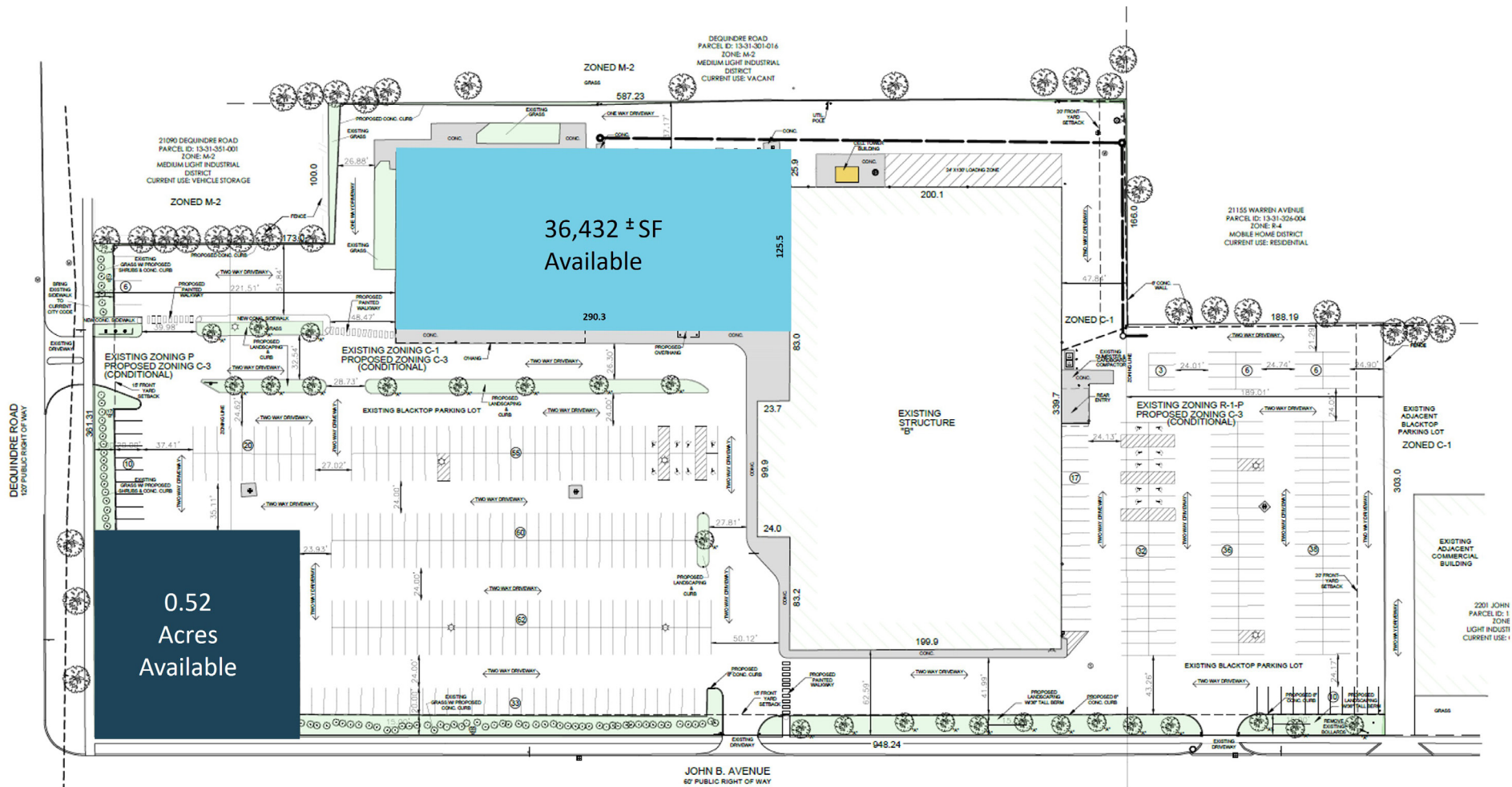
Traffic Counts

Dequindre Road - 13,146+ cpd
8 Mile Road Westbound - 26,173+ cpd
8 Mile Road Eastbound - 26,335+ cpd

Demographics

| | 1 MILE | 3 MILES | 5 MILES |
|------------------------|----------|----------|----------|
| POPULATION: | 19,035 | 120,602 | 374,789 |
| HOUSEHOLDS: | 7,740 | 50,913 | 153,676 |
| AVG. HOUSEHOLD INCOME: | \$60,914 | \$76,046 | \$82,347 |
| DAYTIME POPULATION: | 10,341 | 82,333 | 254,188 |

SITE PLAN



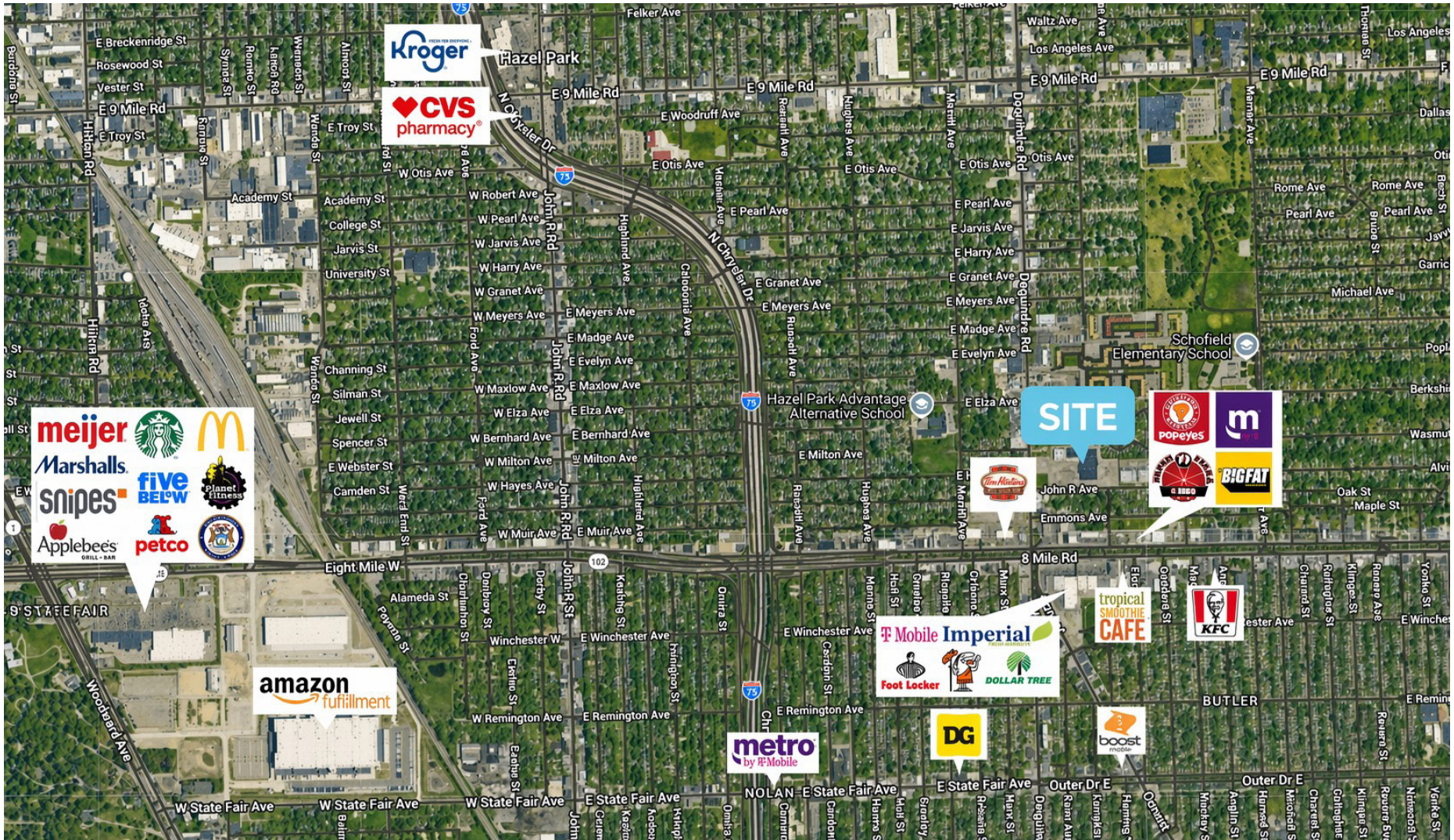
The information contained herein has been obtained through sources deemed reliable by On Q Commercial Real Estate but cannot be guaranteed for its accuracy. We recommend to the buyer or lessee that any information, which is of special interest, should be obtained through independent verification. ALL MEASUREMENTS ARE APPROXIMATE.

MICRO AERIAL



The information contained herein has been obtained through sources deemed reliable by On Q Commercial Real Estate but cannot be guaranteed for its accuracy. We recommend to the buyer or lessee that any information, which is of special interest, should be obtained through independent verification. ALL MEASUREMENTS ARE APPROXIMATE.

MACRO AERIAL



The information contained herein has been obtained through sources deemed reliable by On Q Commercial Real Estate but cannot be guaranteed for its accuracy. We recommend to the buyer or lessee that any information, which is of special interest, should be obtained through independent verification. ALL MEASUREMENTS ARE APPROXIMATE.



OnQ
COMMERCIAL
REAL ESTATE

JOE QONJA

Principal Broker

C: (248) 977-7799

O: (248) 712-3300

E: joe@onqcre.com

LEO ALLUS

Associate

C: (248) 321-3325

O: (248) 712-3300

E: leo@onqcre.com

100 W. Long Lake Rd. Suite 122 Bloomfield Hills, MI 48304

www.onqcre.com

The information contained herein has been obtained through sources deemed reliable by On Q Commercial Real Estate but cannot be guaranteed for its accuracy. We recommend to the buyer or lessee that any information, which is of special interest, should be obtained through independent verification. ALL MEASUREMENTS ARE APPROXIMATE.