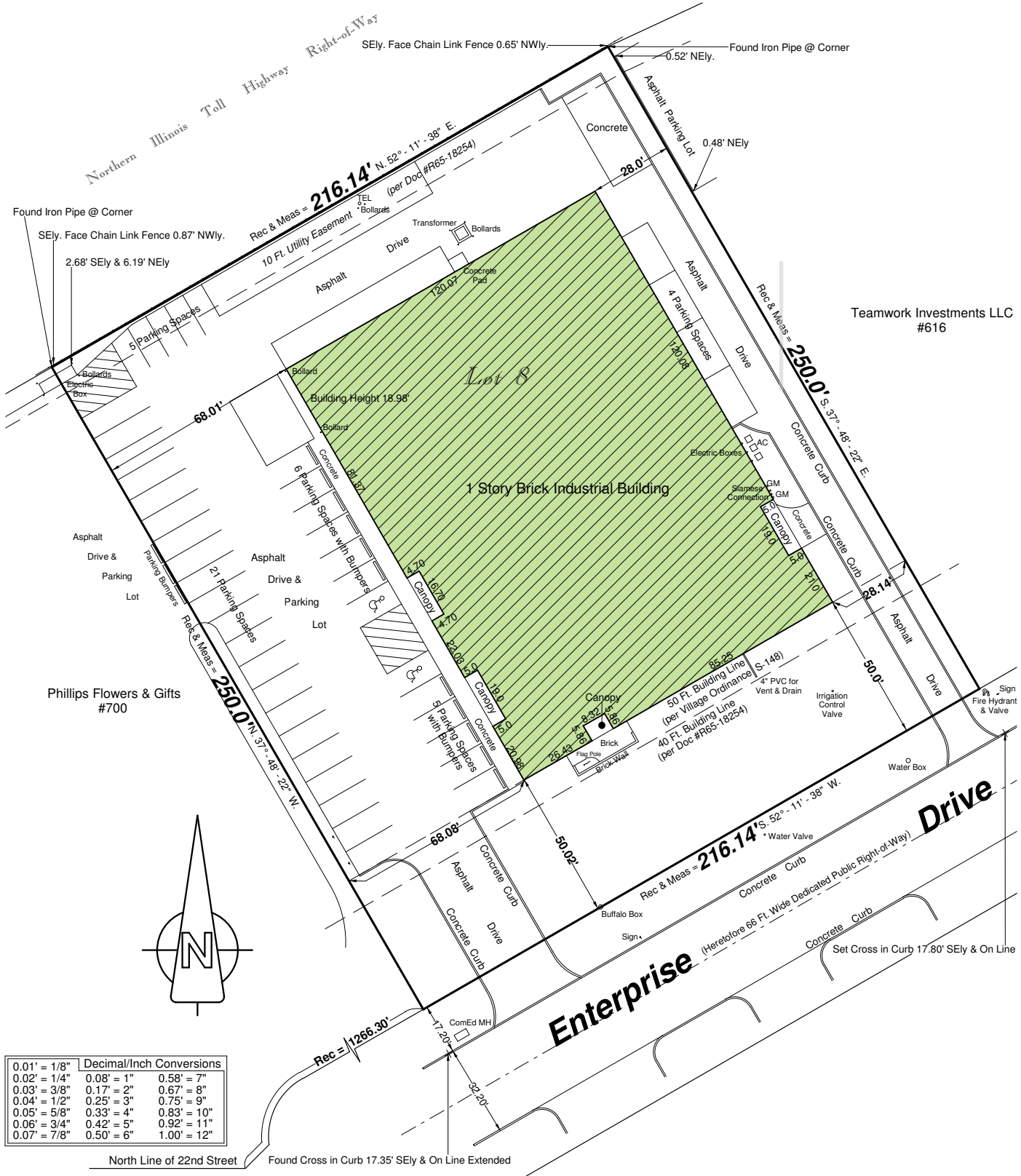


620

ENTERPRISE DRIVE OAK BROOK





Decimal/Inch Conversions		
0.01' = 1/8"	0.08' = 1"	0.58' = 7"
0.02' = 1/4"	0.17' = 2"	0.67' = 8"
0.03' = 3/8"	0.25' = 3"	0.75' = 9"
0.04' = 1/2"	0.33' = 4"	0.83' = 10"
0.05' = 5/8"	0.42' = 5"	0.92' = 11"
0.06' = 3/4"	0.50' = 6"	1.00' = 12"
0.07' = 7/8"		

620 Enterprise
Site Plan



12,397 SF
Office Space

5,988 SF
Warehouse Space
Plus Additional
Mezzanine Storage

18,385 Available
Square Feet

Covered Docks (X2)



Drive-In Door



38 Parking Spaces



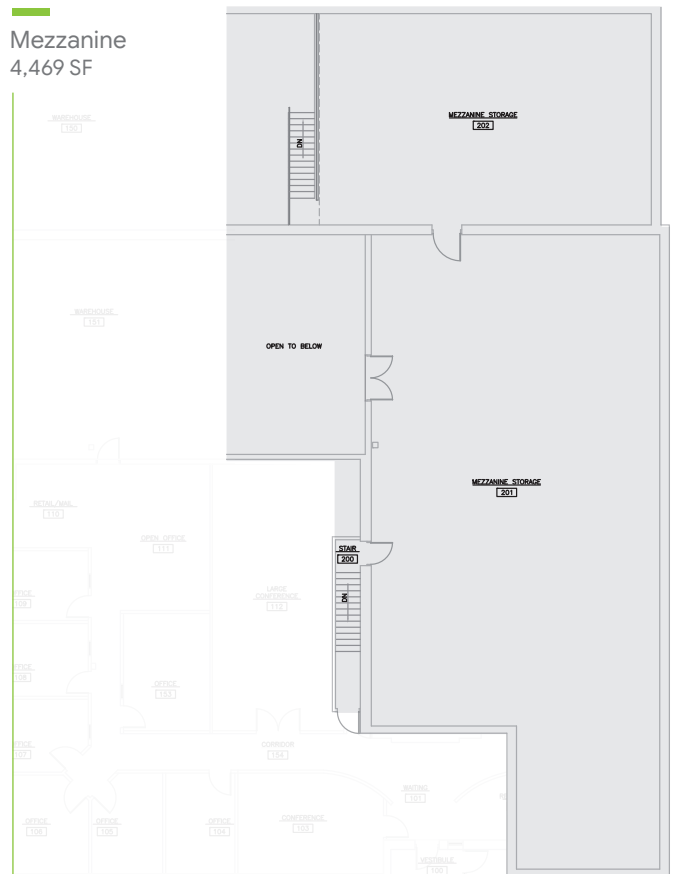
16 FT Clear Height



Signage Visible via I-88



Mezzanine
4,469 SF





I-294 Interstate

1.4 Miles | 4 Minutes

York Road

620

ENTERPRISE DRIVE
OAK BROOK

W. 22nd Street



I-88 Interstate

0.4 Miles | 2 Minutes



620

ENTERPRISE DRIVE
OAK BROOK

PROPERTY CONTACT

Steve Chrastka
(630) 317-0746
Schrastka@Hiffman.com

NAI HIFFMAN DETAILS

Hiffman.com
One Oakbrook Terrace, Suite 400
Oakbrook Terrace, IL 60181

