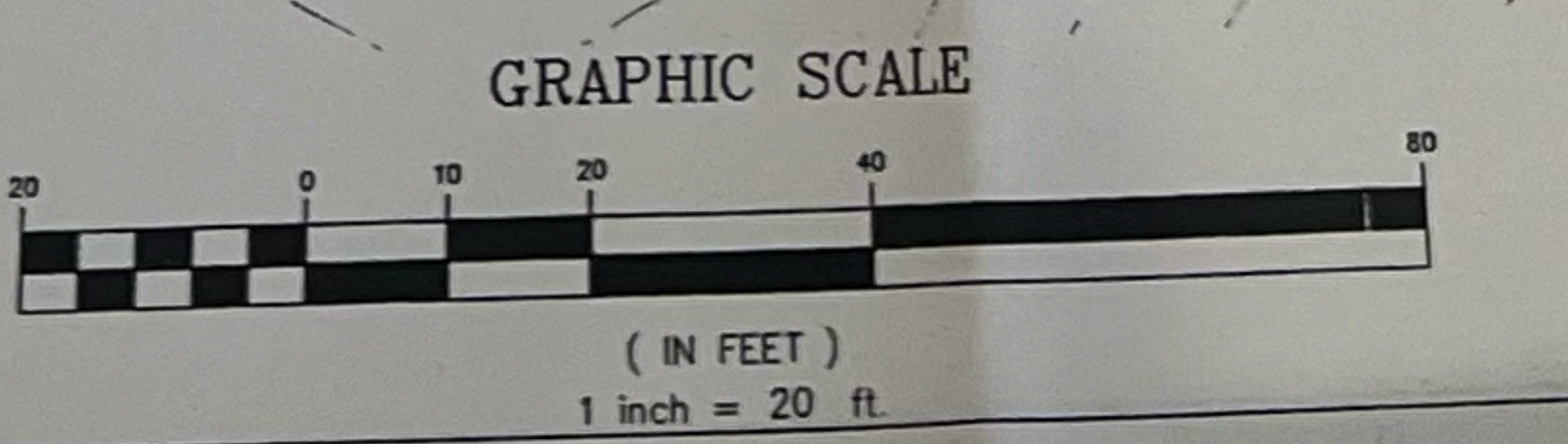
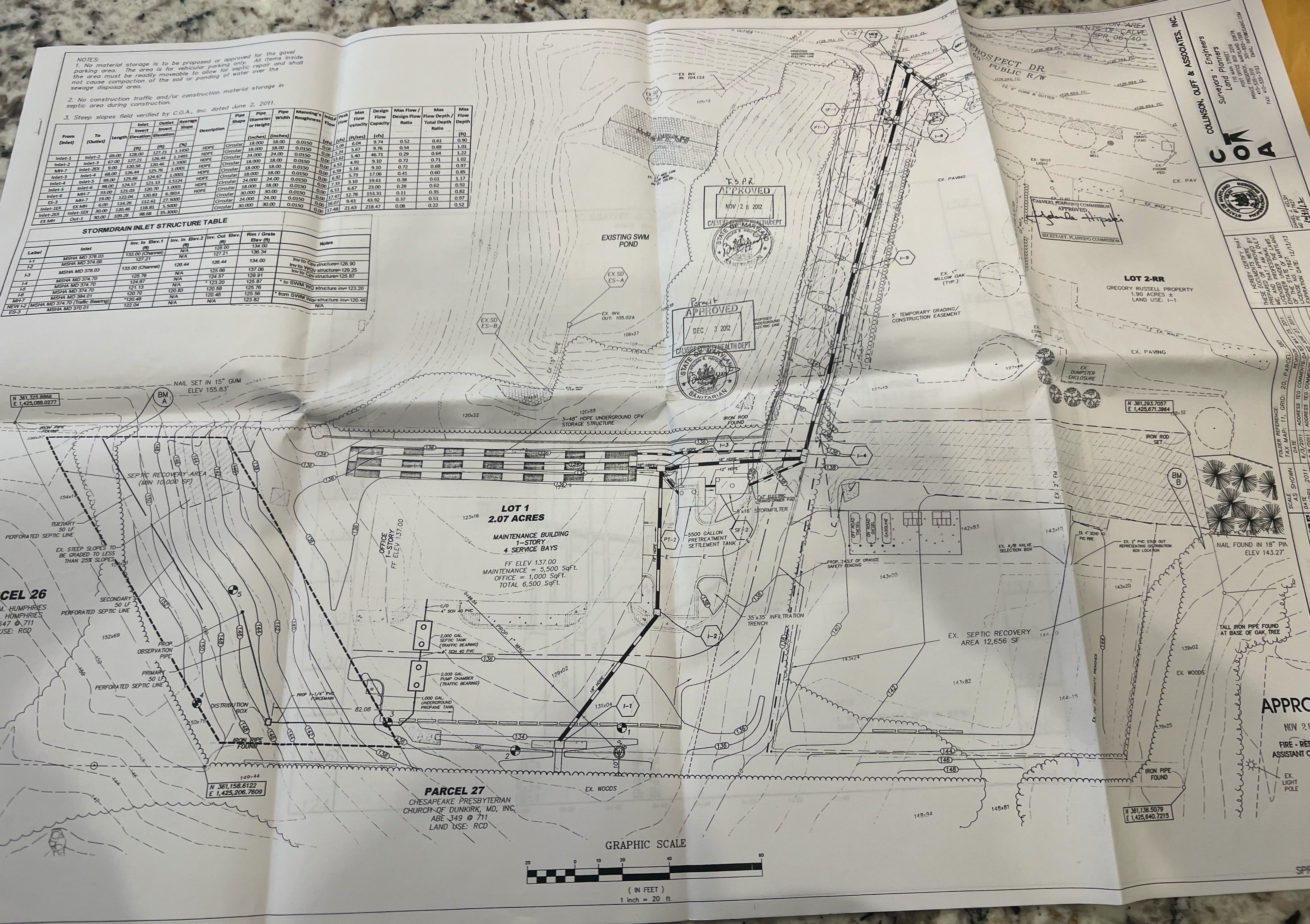


NOTES:  
 1. No material storage is to be proposed or approved for the gravel parking area. The area is for vehicular parking only. All items inside the area must be readily moveable to allow for septic repair and shall not cause compaction of the soil or ponding of water over the sewage disposal area.  
 2. No construction traffic and/or construction material storage in septic area during construction.  
 3. Steep slopes field verified by C.O.A., Inc. dated June 2, 2011.

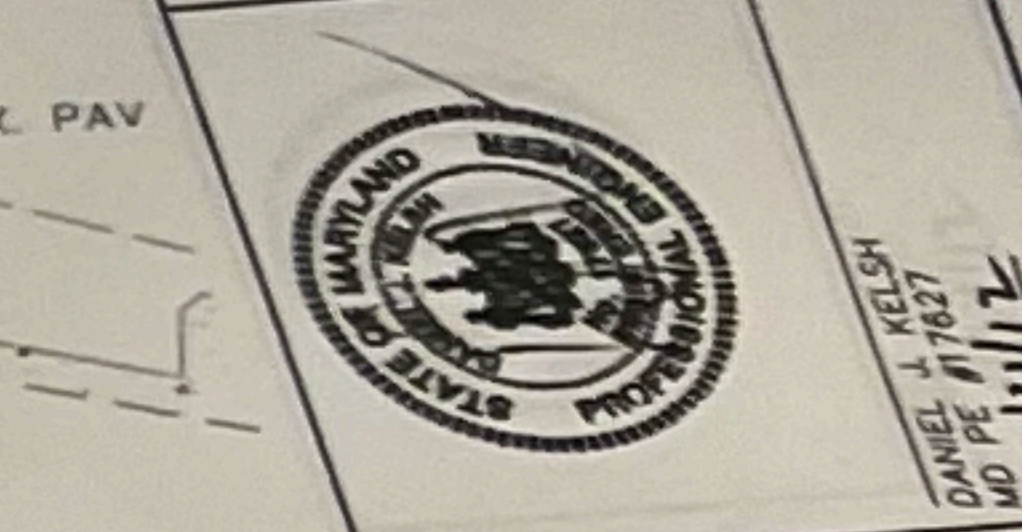
From (Inlet)	To (Outlet)	Length	Inlet Invert Elevation (ft)	Outlet Invert Elevation (ft)	Average Slope (%)	Description	Pipe Shape	Pipe Diameter or Height (Inches)	Pipe Width (Inches)	Manning's Roughness	Initial Flow (cfs)	Peak Flow (cfs)	Max Flow Velocity (ft/sec)	Design Flow Capacity (cfs)	Max Flow / Design Flow Ratio	Max Flow Depth / Total Depth Ratio	Max Flow Depth (ft)
Inlet-1	Inlet-2	69.00	128.00	127.21	1.1493	HDPE	Circular	18.00	18.00	0.0150	0.00	5.09	6.04	9.74	0.52	0.61	0.90
Inlet-2	Inlet-3	67.00	127.21	126.44	1.3300	HDPE	Circular	18.00	18.00	0.0150	0.00	5.24	5.67	9.76	0.54	0.69	1.01
MH-7	Inlet-2X	8.00	120.58	125.76	1.0001	HDPE	Circular	24.00	24.00	0.0150	0.00	13.62	5.40	46.71	0.29	0.64	1.22
Inlet-3	Inlet-4	98.00	126.44	125.76	1.0001	HDPE	Circular	18.00	18.00	0.0150	0.00	6.53	4.91	9.10	0.72	0.71	1.02
Inlet-4	Inlet-5	98.00	125.66	124.67	1.0001	HDPE	Circular	18.00	18.00	0.0150	0.00	6.59	5.16	9.10	0.72	0.68	0.97
Inlet-5	Inlet-6	33.00	121.03	120.70	3.5124	HDPE	Circular	24.00	24.00	0.0150	0.00	6.92	5.73	17.06	0.41	0.60	0.85
Inlet-6	MH-7	18.00	122.04	121.13	1.0001	HDPE	Circular	18.00	18.00	0.0150	0.00	7.33	3.10	19.61	0.38	0.61	1.17
ES-3	MH-7	6.00	124.26	118.81	5.5000	HDPE	Circular	30.00	30.00	0.0150	0.00	17.47	6.67	23.00	0.28	0.62	0.92
Inlet-1EX	EX MH	30.00	121.46	118.81	5.5000	HDPE	Circular	24.00	24.00	0.0150	0.00	16.07	9.43	43.92	0.37	0.51	0.97
Inlet-2EX	EX MH	30.00	109.28	98.68	35.3000	HDPE	Circular	30.00	30.00	0.0150	0.00	17.48	21.63	218.47	0.08	0.22	0.52

STORMDRAIN INLET STRUCTURE TABLE

Label	Inlet	Inv. In Elev.1 (ft)	Inv. In Elev.2 (ft)	Inv. Out Elev. (ft)	Rim / Grate Elev. (ft)	Notes
I-1	MSHA MD 378.03	133.00 (Channel)	N/A	128.00	134.00	
I-2	MSHA MD 374.06	127.21	N/A	127.21	136.34	
I-3	MSHA MD 378.03	133.00 (Channel)	N/A	125.66	137.06	Inv to CPV structure=126.90 Inv to WQV structure=129.25
I-4	MSHA MD 374.70	126.76	N/A	124.57	129.91	Inv to CPV structure=125.87
I-5	MSHA MD 374.70	124.67	N/A	123.20	125.87	* to SWM WQ structure inv=123.20
I-6	MSHA MD 374.70	121.13	120.83	120.83	125.76	
I-8	MSHA MD 384.01	121.46	N/A	120.45	125.56	* from SWM WQ structure inv=120.48
NEW I-2	MSHA MD 374.70 (Traffic Bearing)	122.04	N/A	N/A	123.82	
ES-3	MSHA MD 370.01	122.04	N/A	N/A	N/A	



COLLINS & ASSOCIATES, INC.  
 Engineers  
 Surveyors, Planners  
 110 MAIN STREET  
 POST OFFICE BOX 208  
 CALVERTON, MARYLAND 20618  
 PHONE: 410-337-3101  
 FAX: 410-337-3103  
 EMAIL: INFO@COLLINS-CA.COM



PLANNING COMMISSION APPROVED  
 AGENDA Hipski  
 SECRETARY, PLANNING COMMISSION

LOT 2-RR  
 GREGORY RUSSELL PROPERTY  
 1.90 ACRES ±  
 LAND USE: I-1

N 361,325.8966  
 E 1,425,088.0277

N 361,293.7057  
 E 1,425,671.3964

N 361,158.6122  
 E 1,425,206.7609

N 361,136.5079  
 E 1,425,640.7215

APPROVED  
 NOV 28 2012  
 FIRE - RESISTANT ASSISTANT CHIEF  
 EX LIGHT POLE