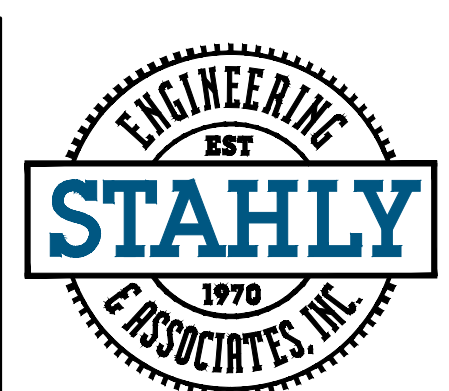
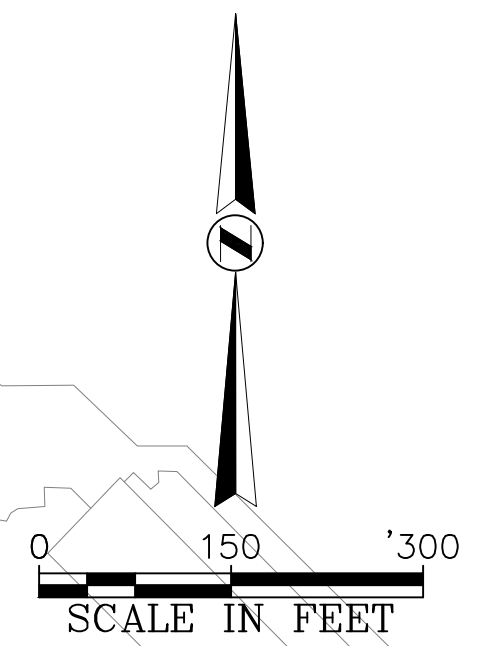
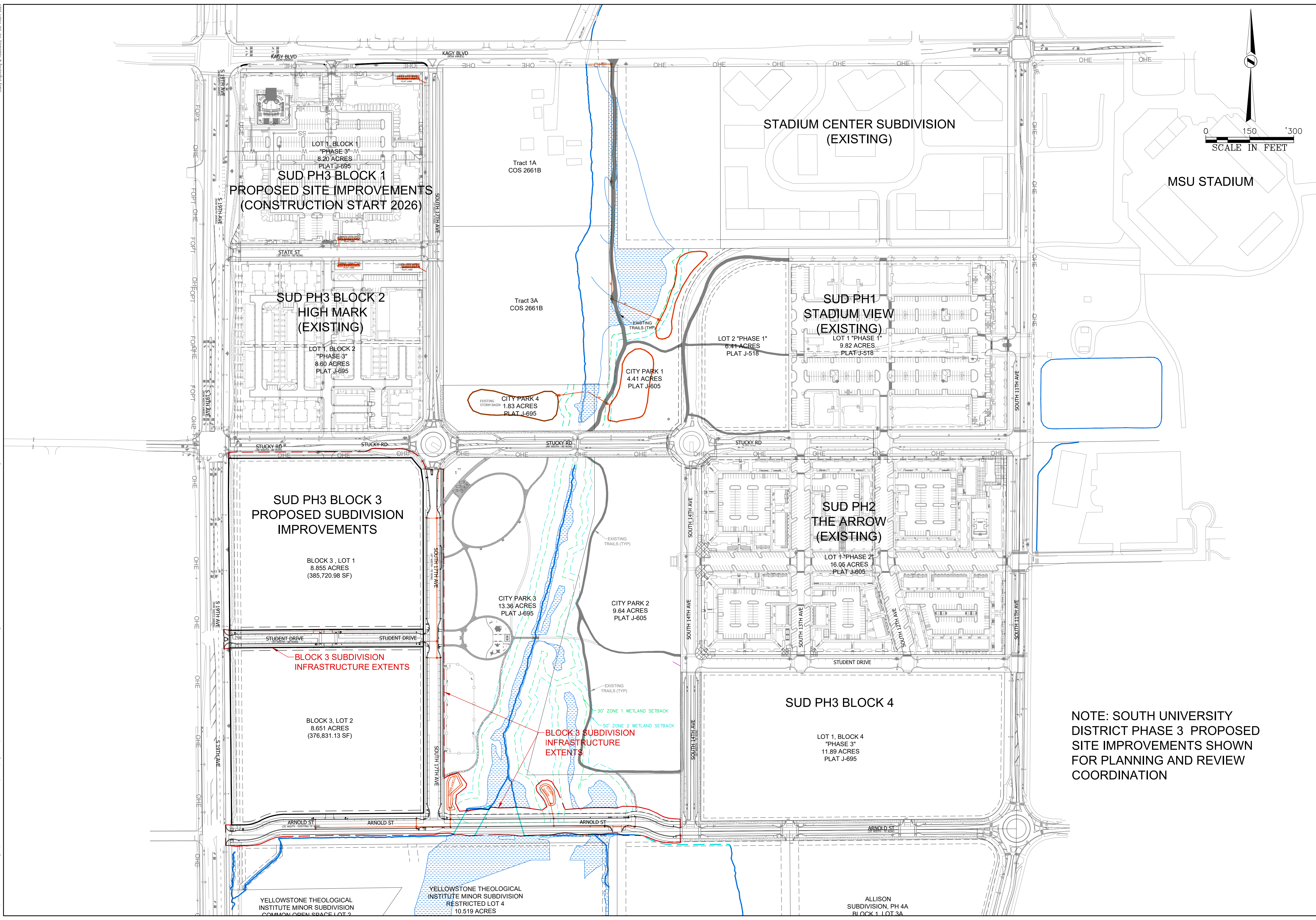


L:\1358-RTR Holdings\01524_SUD_Block3\Drawings\Sub Overall Plan - JERRY PAPER.dwg, SUD OVERALL, Plotfile: Dec 02, 2025 - 9:57am, Ingraph



STAHLY ENGINEERING & ASSOCIATES
 PROFESSIONAL ENGINEERS & SURVEYORS
 www.seoeng.com

BILLINGS
 Phone: (406)601-4055
 851 BRIDGER DR. STE 1
 BOZEMAN, MT 59715
 Phone: (406)522-9526
 CODY
 Phone: (307)509-5541
 GREAT FALLS
 Phone: (406)604-4644
 HELENA
 Phone: (406)442-8594

No.	DATE	ISSUE/REVISION	DESCRIPTION	EOR			QCR		
				ZWL	CDP				
1	11/23/2025		PRELIMINARY PLAT						

SUD PH. 3 BLOCK 3 SUBDIVISION
RTR HOLDINGS II, LLC

SUD OVERALL SUBDIVISION

SHEET
FIGURE 1

NOTE: SOUTH UNIVERSITY DISTRICT PHASE 3 PROPOSED SITE IMPROVEMENTS SHOWN FOR PLANNING AND REVIEW COORDINATION