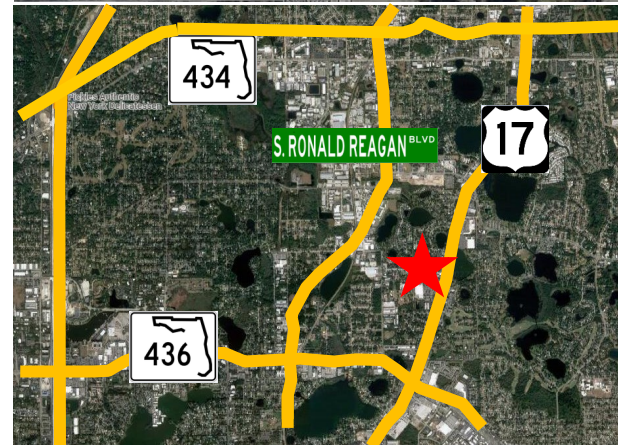
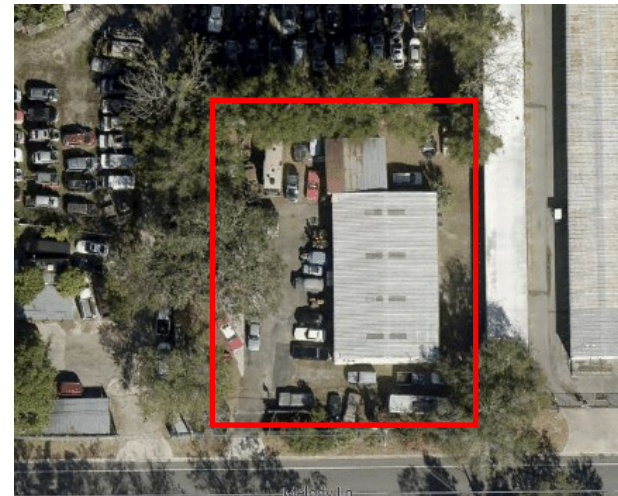




237 W Melody Lane Casselberry, FL 32707

Sale Rate: \$1,050,000
Lease Rate: \$18.00 PSF NNN
Building Size: **4,000 ±SF**
Office Space: **400 ± SF**
Grade Doors: **(3) 10x12**
Overhang: **800 ± SF**
Land Area: **0.50 acres**
Casselberry Zoning: **I**
Year Built: **1983**
Property Tax: **\$6,814.55**



Chuck McNulty
Broker

Mobile: (407) 619-4245

Chuck@mcnultygroupinc.com

Office Address:

2315 Lynx Lane

Suite # 6

Orlando, Florida 32804

www.mcnultygroupinc.com