



BLDG 618

1885 West E Avenue > TOOELE, UT

PETERSON INDUSTRIAL DEPOT LEASING OFFICE:
545 N. Lodestone Way Tooele, UT 84074

WWW.PETERSONDEPOT.COM **435.849.8400**



PROPERTY DETAILS >

- 6,750 Total Building SF
- Construction: Wood Frame with Metal Siding
- Roof: Metal
- Clear Height: 16'
- Available Power: 600 Amp, 3 Phase, 120/208 Volt
- Lot Size: .964 Acres
- Heating: Natural Gas, Forced Air
- Cooling: Air Conditioning – Central Air
- Restrooms: Two
- Sprinklers: Wet Fire Suppression System
- 2026 Remodel
- One (1) 12' x 14' Overhead Door

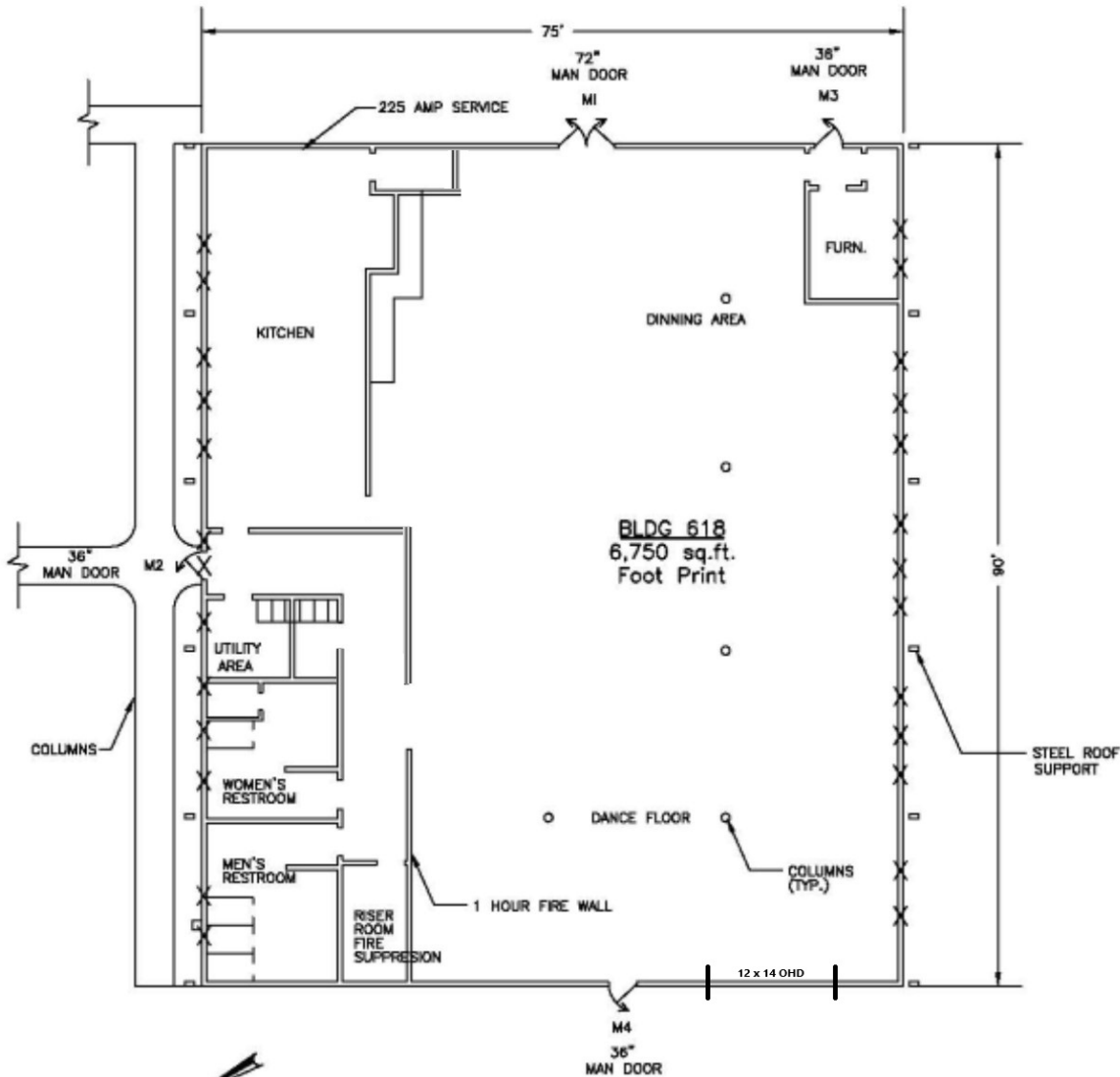


BLDG 618

1885 West E Avenue > TOOELE, UT

PETERSON INDUSTRIAL DEPOT LEASING OFFICE:
545 N. Lodestone Way Tooele, UT 84074

WWW.PETERSONDEPOT.COM 435.849.8400



LEGEND
X WINDOWS

