

**FOR LEASE**

# LONDON PLACE WEST

5255 RICHMOND RD SW, CALGARY ALBERTA

**RETAIL**



## CONTACT US

### **John Moss**

Senior Vice President  
403.750.0507  
john.moss@cbre.com

### **Ania Gryzewski**

Associate Vice President  
403.750.0806  
ania.gryzewski@cbre.com

### **Trevin Bellemare**

Sales Representative  
403.303.3603  
trevin.bellemare@cbre.com

### **Joanna Grant**

Sales Representative  
403.294.5705  
joanna.grant@cbre.com

[www.cbre.com](http://www.cbre.com)

**CBRE**

FOR LEASE

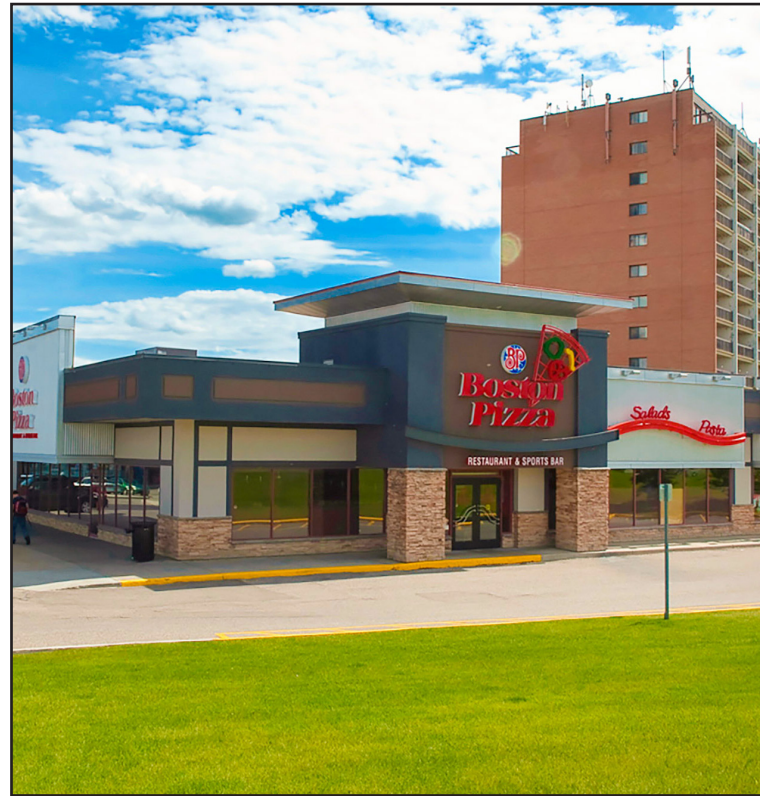
# LONDON PLACE WEST



## PROPERTY INFORMATION

### London Place West

Available Space	#100 - <i>Conditionally Leased</i> #290- 3,615 sq.ft
Rates	\$30 - \$35
Op Costs	\$15.86( 2019 est.)
Parking	Mall style parking
Signage	Facsia & Pylon
Zoning	C-C2



## HIGHLIGHTS

- Anchored by London Drugs and BrightPath Kids with other co-tenants such as BMO, Boston Pizza and Mac's
- East access from Sarcee Trail and Richmond Road SW
- New facade renovation completed in 2010 with all new storefront facades, landscaping and a re-surfaced parking lot

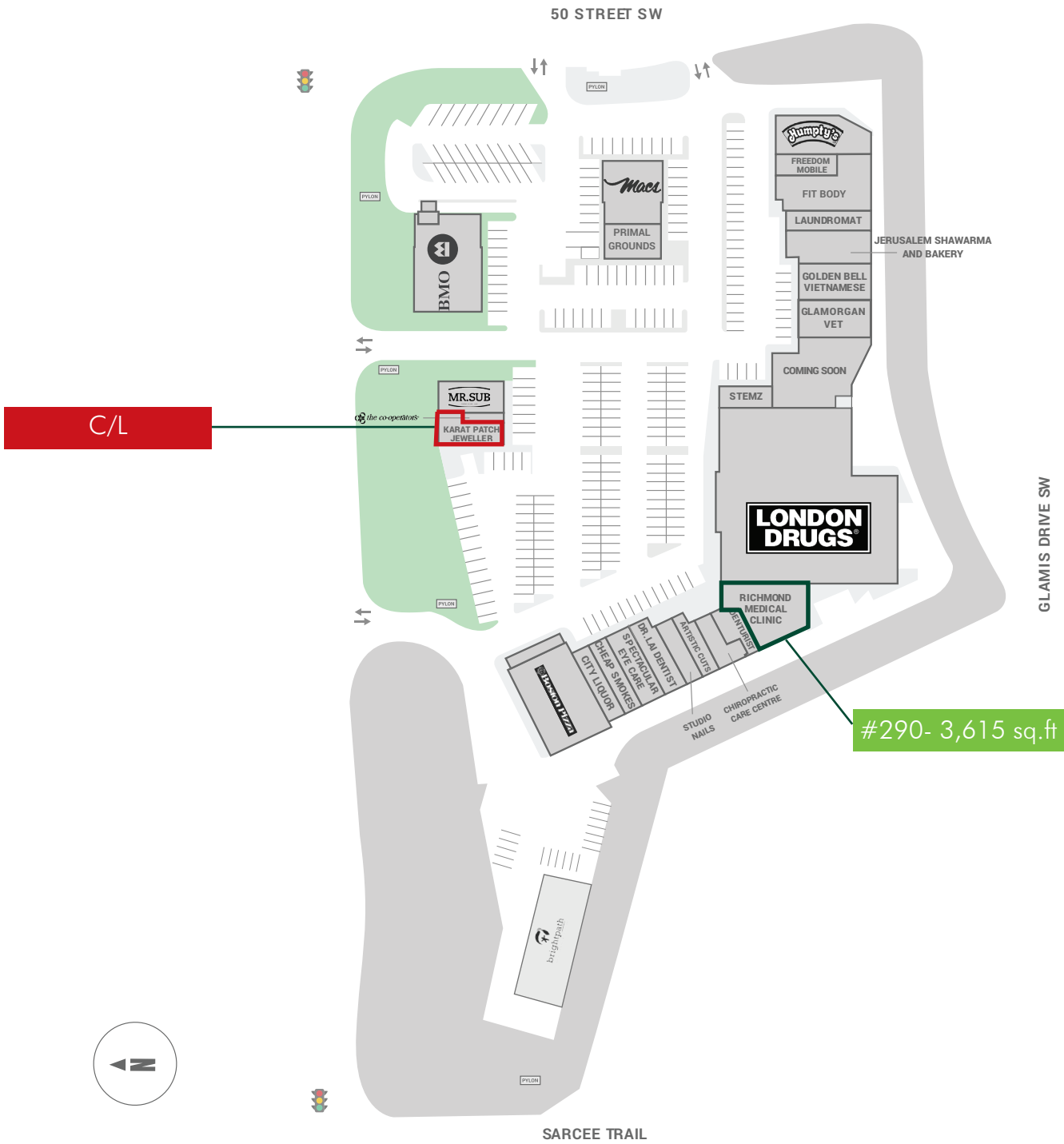


# 5255 Richmond Road SW Calgary Alberta

**RETAIL  
CENTRE**



## SITE PLAN



FOR LEASE

# LONDON PLACE WEST

5255 RICHMOND RD SW, CALGARY ALBERTA

RETAIL



## SITE LOCATION



## DEMOGRAPHICS

POPULATION	0-1 KM	0-3 KM	0-5 KM
<b>2011</b> estimated	10,645	57,518	131,806
<b>2016</b> estimated	11,772	65,662	153,160
<b>2019</b> projected	12,329	69,658	163,931

AVERAGE HOUSEHOLD INCOME	0-1 KM	0-3 KM
<b>2011</b> estimated	\$93,234	\$119,541
<b>2016</b> estimated	\$105,464	\$140,629
<b>2019</b> projected	\$112,947	\$151,445

## CONTACT US

### John Moss

Senior Vice President  
403.750.0507  
john.moss@cbre.com

### Ania Gryzewski

Associate Vice President  
403.750.0806  
ania.gryzewski@cbre.com

### Trevin Bellemare

Sales Representative  
403.303.3603  
trevin.bellemare@cbre.com

### Joanna Grant

Sales Representative  
403.294.5705  
joanna.grant@cbre.com

This disclaimer shall apply to CBRE Limited, Real Estate Brokerage, and to all other divisions of the Corporation; to include all employees and independent contractors ("CBRE"). The information set out herein, including, without limitation, any projections, images, opinions, assumptions and estimates obtained from third parties (the "Information") has not been verified by CBRE, and CBRE does not represent, warrant or guarantee the accuracy, correctness and completeness of the Information. CBRE does not accept or assume any responsibility or liability, direct or consequential, for the Information or the recipient's reliance upon the Information. The recipient of the Information should take such steps as the recipient may deem necessary to verify the Information prior to placing any reliance upon the Information. The Information may change and any property described in the Information may be withdrawn from the market at any time without notice or obligation to the recipient from CBRE. CBRE and the CBRE logo are the service marks of CBRE Limited and/or its affiliated or related companies in other countries. All other marks displayed on this document are the property of their respective owners. All Rights Reserved.

[www.cbre.com](http://www.cbre.com)

