



**Dixie Commercial**  
5323 A Dixie, Waterford Township, MI 48329



**Gina Lacobelli**  
IMC Group  
5645 Sashabaw Rd, Clarkston, MI 48346  
[gina@imc.group](mailto:gina@imc.group)  
(248) 625-1188

# Dixie Commercial

\$10.00 /SF/YR



Rental Rate:	\$11.00 /SF/YR
Property Type:	Industrial
Rentable Building Area:	10,000 SF
Year Built:	1985
Rental Rate Mo:	



## 1st Floor

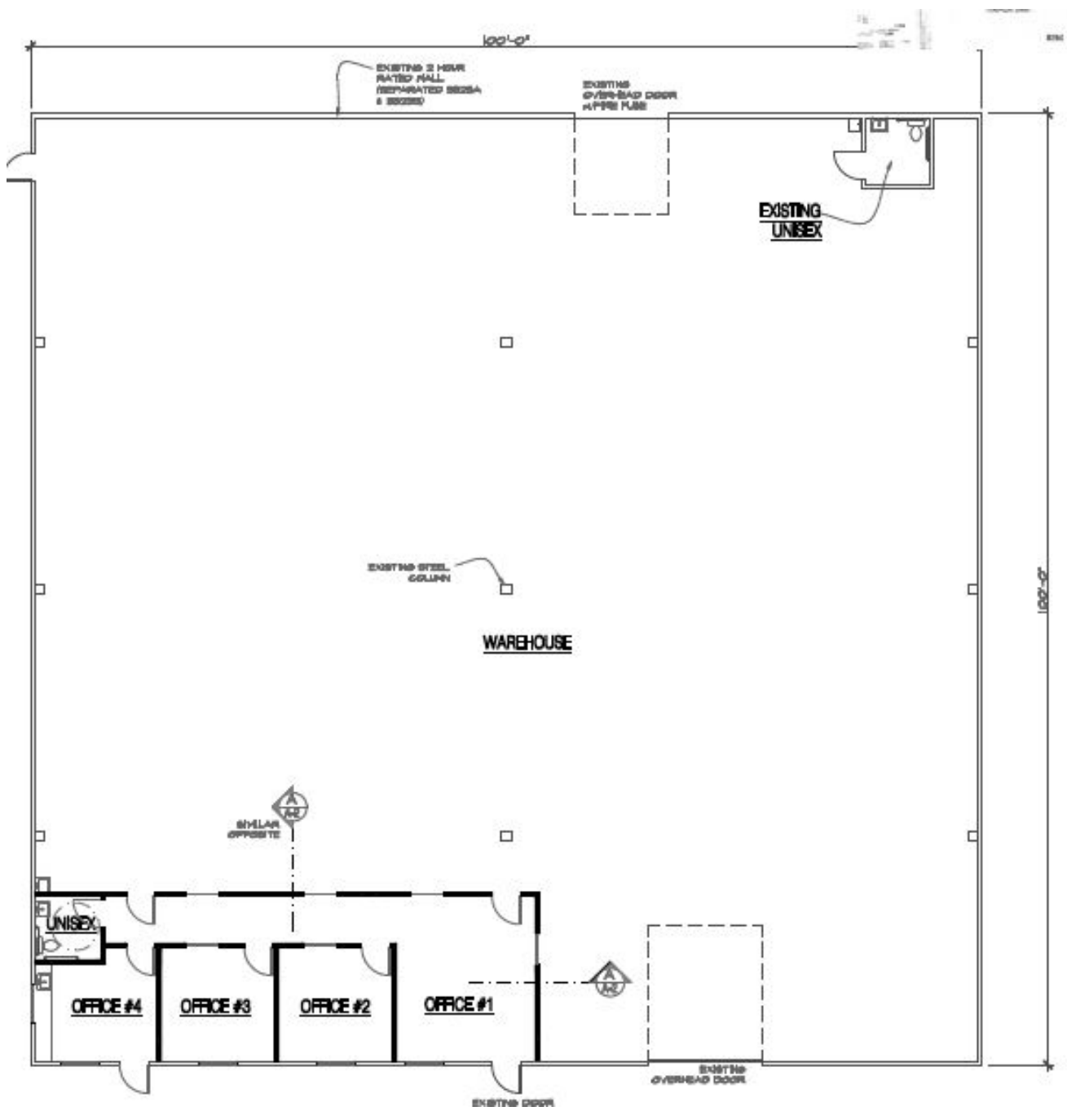
Space Available	10,000-20,000 SF
Rental Rate	\$10.00 /SF/YR
Date Available	Now
Service Type	Modified Gross
Office Size	1,000 SF
Space Type	Relet
Space Use	Industrial
Lease Term	Negotiable

Newly built-out light industrial warehouse with private offices, bathrooms and kitchenette. Newly installed LED lights, furnace, and radiant heaters. One 12 x 14 ft overhead door. There is also a fenced yard for equipment and vehicle storage. New parking lot to be installed Summer 2024.

Space is contiguous with an additional 10,000 sf with a possibility of 20,000 sf of space. One front and one rear overhead door and ample yard space.

1







## 5327 Dixie, Waterford Township, MI 48329

Commercial and industrial warehouse: 50,000 sq. ft. multi/building, commercial and warehouse campus on 13 acres. Five single-tenant buildings. Acquired in 2015 and redeveloped by IMC.

### Property Features

Multi-building complex situated on 13 fenced acres in the North Oakland County community of Waterford.

1000 sq. ft of offices with kitchenette and conference room.

Four 10,000 sq. ft. free standing metal building with ample fenced yard storage.

Electric overhead doors on each building.

Easy access north to I-75 and south to Telegraph and Woodward Avenue.