

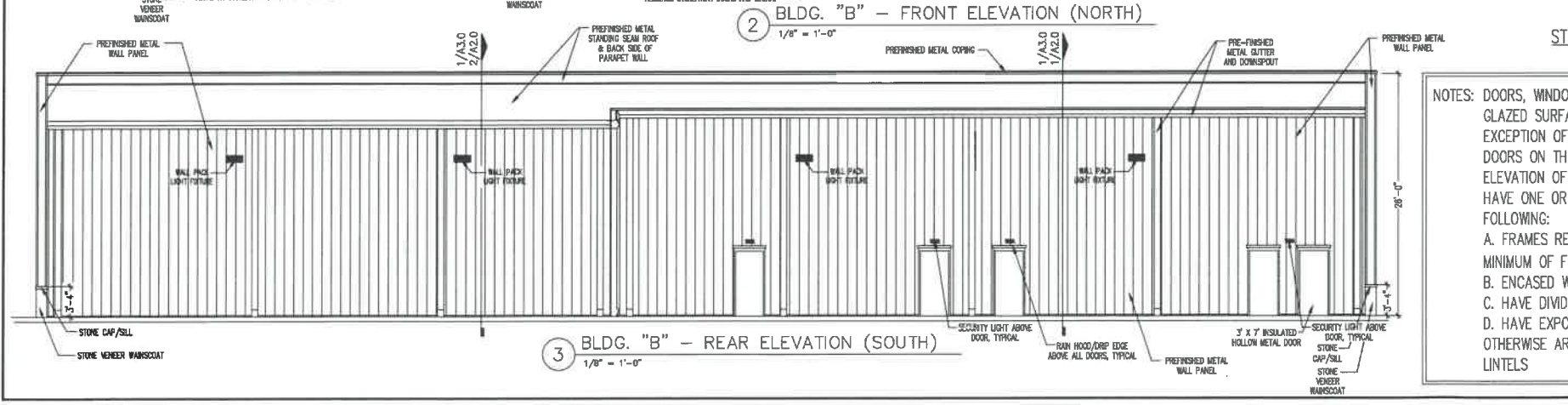
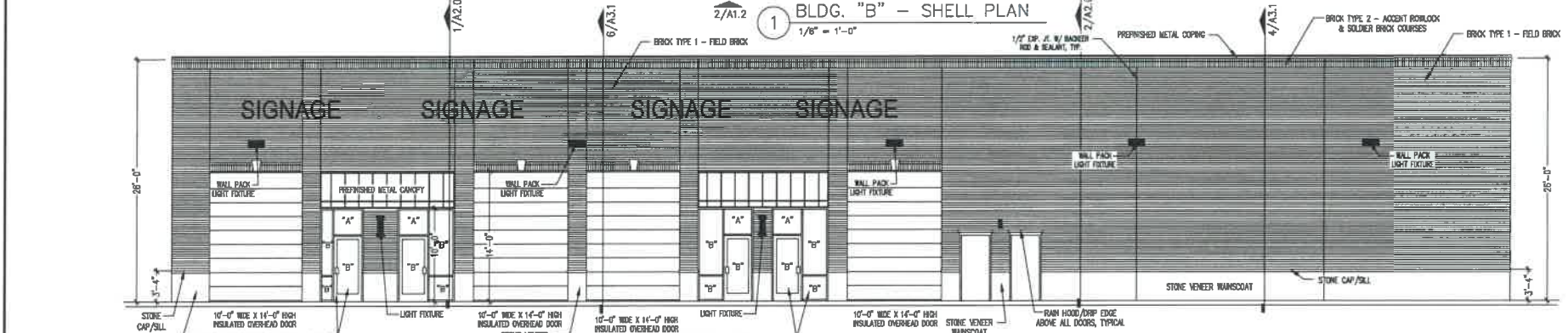
- NOTE: ALL EXTERIOR MATERIAL SHALL BE OF "EARTHTONES" COLORS
- EXTERIOR MATERIALS COLORS:
1. PRE-FINISHED STANDING SEAM METAL ROOF & BACK SIDE OF PARAPET WALL PANEL: "COOL GRANITE GRAY"
 2. METAL PANEL, TRIM & FRONT AWNING CANOPY (COPING, DOWNSPOUTS, CAP TRIM, ETC.): "COOL ZINC GRAY"
 3. ALUMINUM STOREFRONT SYSTEM: "NATURAL ALUMINUM"
 4. BRICK TYPE 1 : MAIN BODY "OYSTER BAY". MORTAR LIGHT BUFF
 5. BRICK TYPE 2 : ACCENT/BORDER BRICK "SHADOW GREY TUDOR". MORTAR LIGHT BUFF
 6. CONCRETE SIDEWALK - WASHED PEA-GRAVEL CONCRETE FINISH



ALUMINUM STOREFRONT SYSTEM: "NATURAL ALUMINUM"

BRICK TYPE 1 - MAIN BODY FIELD BRICK "OYSTER BAY". MORTAR LIGHT BUFF

BRICK TYPE 2-ACCENT/BORDER BRICK "SHADOW GREY TUDOR". MORTAR LIGHT BUFF



NOTES: DOORS, WINDOWS, AND GLAZED SURFACES, WITH THE EXCEPTION OF STEEL FIRE DOORS ON THE REAR ELEVATION OF THE BUILDING, HAVE ONE OR MORE OF THE FOLLOWING:

- A. FRAMES RECESSED A MINIMUM OF FOUR (4) INCHES
- B. ENCASED WITH TRIM
- C. HAVE DIVIDED LIGHTS
- D. HAVE EXPOSED OR OTHERWISE ARTICULATED LINTELS



METAL PANEL, TRIM & FRONT AWNING CANOPY (COPING, DOWNSPOUTS, CAP TRIM, ETC.) "COOL ZINC GRAY"

PRE-FINISHED STANDING SEAM METAL ROOF & BACK SIDE OF PARAPET WALL PANEL "COOL GRANITE GRAY"

RETAIL SHELL BUILDINGS AT

MID CITY

COMMERCIAL LOT - 2

US HWY 178 & WEST BRANCH RD
OLIVE BRANCH, MISSISSIPPI

OWNER/DEVELOPER
FOCAL POINT
INVESTMENTS, LLC.
6011 HATCHER CIRCLE
MEMPHIS, TN 38118
901-506-3078 - www.architectwong.com

architect:
Kui-Mew Wong, Architect
Mississippi Architect Reg. No.: 2996
9033 GARDEN ARBOR DRIVE, SUITE 228, GERMANTOWN, TN 38138

DATE: AUG. 27, 2018

PROJECT: BLDG. "B" - SHELL BUILDING PLAN & ELEVATIONS

SHEET: **A1.2**