

# Hewitt WORKLOFTS

2210 Hewitt Ave, Everett, WA 98201

## Flex/Office/Retail Suites Available For Lease

- Newly renovated common areas
- Creative workspace availabilities with a diverse tenant mix
- Historic office building in the heart of downtown Everett
- Parking: \$75/Stall/Month



**NEWMARK**

LEVI BUNDRANT  
Associate  
425.409.7405  
[levi.bundrant@nmrk.com](mailto:levi.bundrant@nmrk.com)

CHARLIE FARRA  
Executive Vice President  
206.999.2928  
[charlie.farra@nmrk.com](mailto:charlie.farra@nmrk.com)

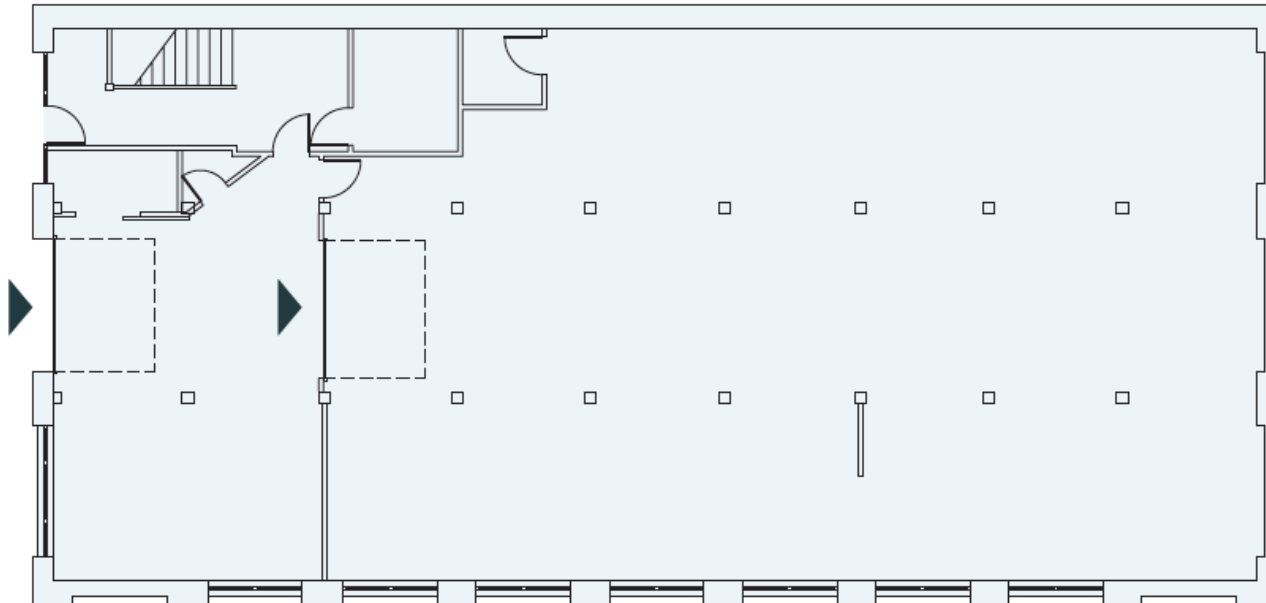
# FIRST FLOOR

Suite 101

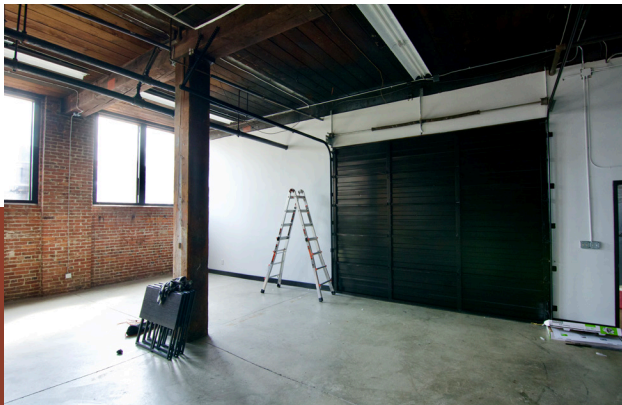
4,781 RSF

Flex Space - \$12.00/NNN

14' clear height, automatic grade level doors

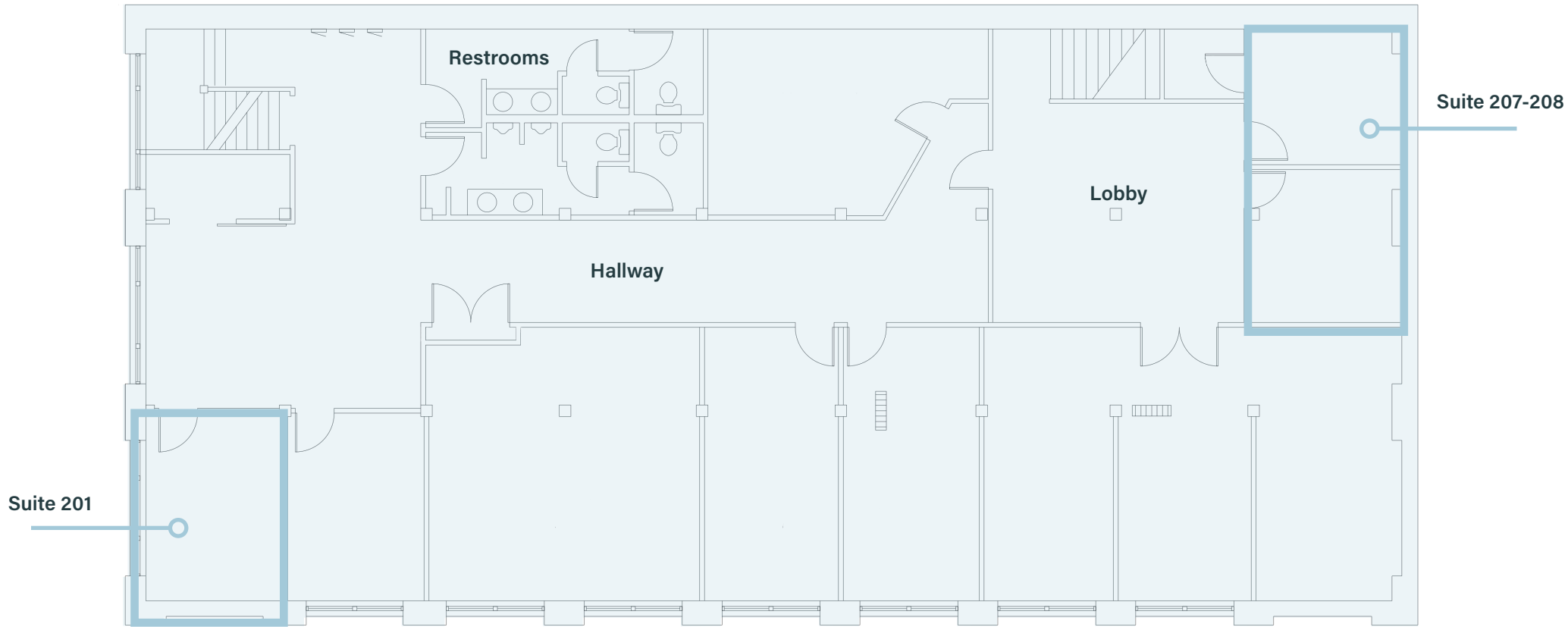


▼ GRADE LEVEL DOOR



# SECOND FLOOR

Suite 201	332 RSF	Office - \$25.00/FS
Suite 207-208	566 RSF	Office - \$25.00/FS



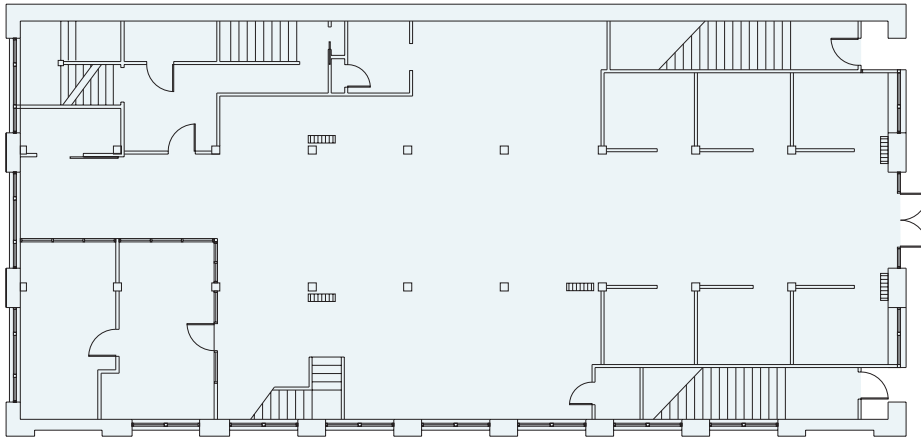
# THIRD FLOOR

Suite 301

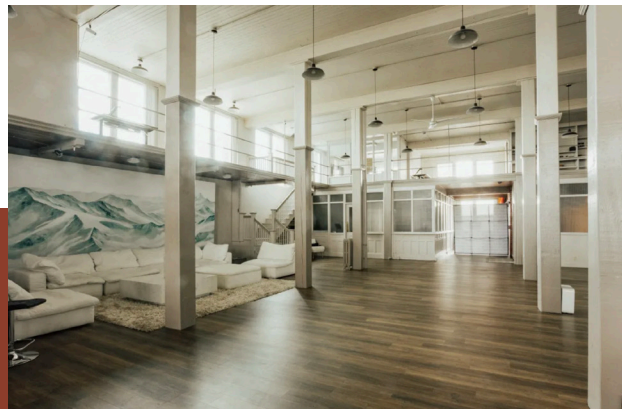
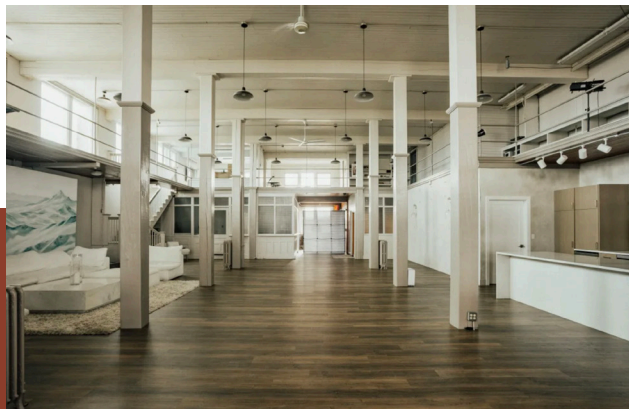
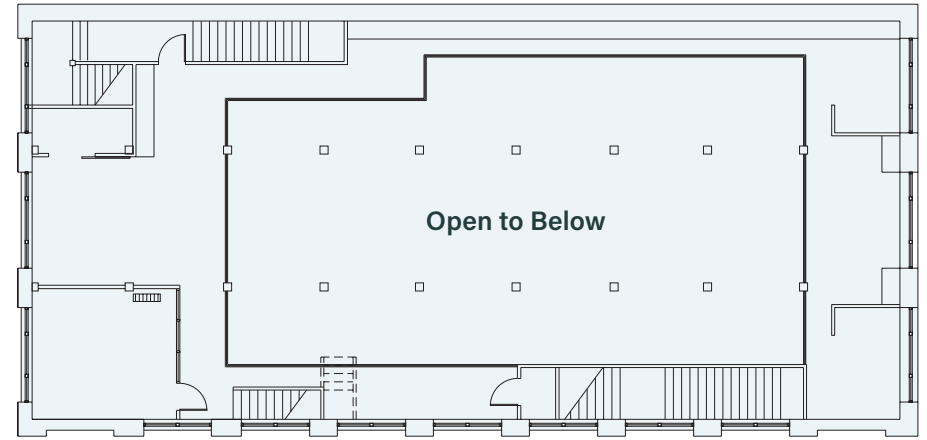
6,787 RSF

Retail - \$18.00

Street Level | Suite 301



Mezzanine



# A TRANSFORMATIONAL NEIGHBOR: NEW EVERETT AQUASOX STADIUM COMING 2027

## Adjacent to Hewitt Worklofts | \$82M+ Public/Private Investment

A brand new **\$82 million multipurpose stadium** is coming just **steps from 2210 Hewitt Ave**, poised to reshape the energy and economy of downtown Everett. Recently approved by City Council, this facility will become the **future home of the Everett AquaSox** and host year-round events—bringing vitality and visibility to the neighborhood.



### What's Coming:

- Professional Baseball + United Soccer League (USL) Men's & Women's Teams
- Concerts, School Sports, Festivals & Community Events
- 106+ Event Days Annually
- Community Plaza, Pedestrian Corridors & Year-Round Activation
- Targeted opening: **April 2027**

### Why It Matters:

- Stadium location is **directly adjacent to 2210 Hewitt Ave**
- \$82M+ in city, state, and private investment—no projected impact to local taxes
- Estimated to increase surrounding economic activity by **50%-100%**
- Located just blocks from **Everett Station and Light Rail**

## The Opportunity

With construction underway and momentum building, Hewitt Worklofts offers tenants the chance to lease space in the **epicenter of Everett's next wave of development**. Join a creative tenant mix and plant your brand where the energy will be.

"This is a home run for the entire community."  
— Danny Tetzlaff, AquaSox General Manager

# AMENITIES

1. Site Location | 2210 Hewitt Ave

2. K Fresh

3. At Large Brewing & Taproom

4. The Loft Coffee Bar

5. Cafe Makario

6. Vintage Cafe

7. Narrative Coffee

8. McDonald's

9. Taco Bell

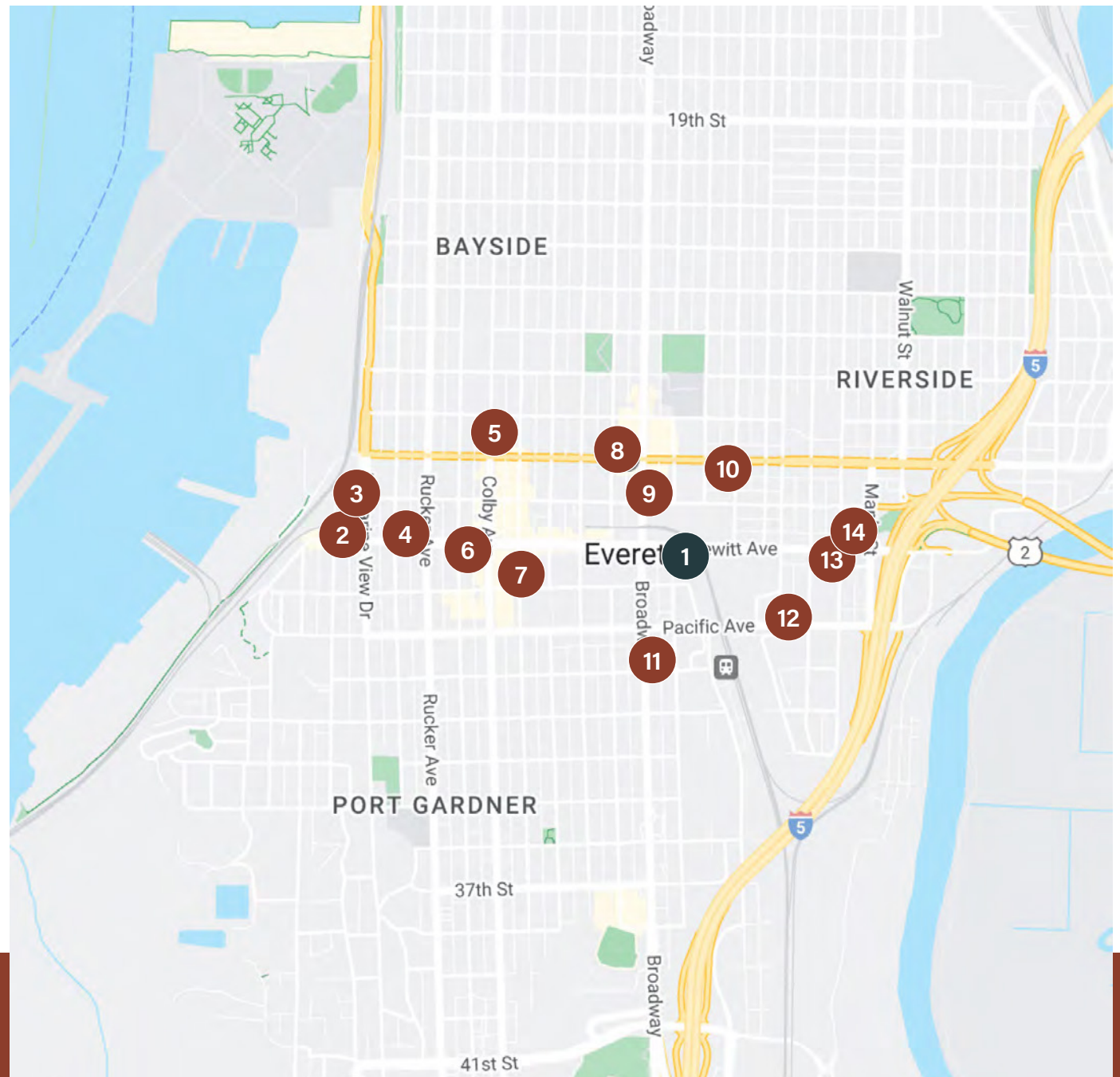
10. The Fireplace Bar

11. Buzz Inn Steakhouse

12. Lew's BBQ

13. Katana Sushi

14. Buck's American Cafe



# Hewitt WORKLOFTS

2210 Hewitt Ave, Everett, WA 98201

LEVI BUNDRANT

Associate

425.409.7405

[levi.bundrant@nmrk.com](mailto:levi.bundrant@nmrk.com)

CHARLIE FARRA

Executive Vice President

206.999.2928

[charlie.farra@nmrk.com](mailto:charlie.farra@nmrk.com)

**NEWMARK**

The information contained herein has been obtained from sources deemed reliable but has not been verified and no guarantee, warranty or representation, either express or implied, is made with respect to such information. Terms of sale or lease and availability are subject to change or withdrawal without notice.