



12,139 SF AVAILABLE  
**DOLLAR TREE**

PROPOSED NATIONAL RETAILER  
25,030 SF

3,968 SF AVAILABLE

11,258 SF AVAILABLE

**STOP&SHOP**



# PROJECT DETAILS

1400 PARK AVENUE • UP TO 12,139 AVAILABLE • RETAIL

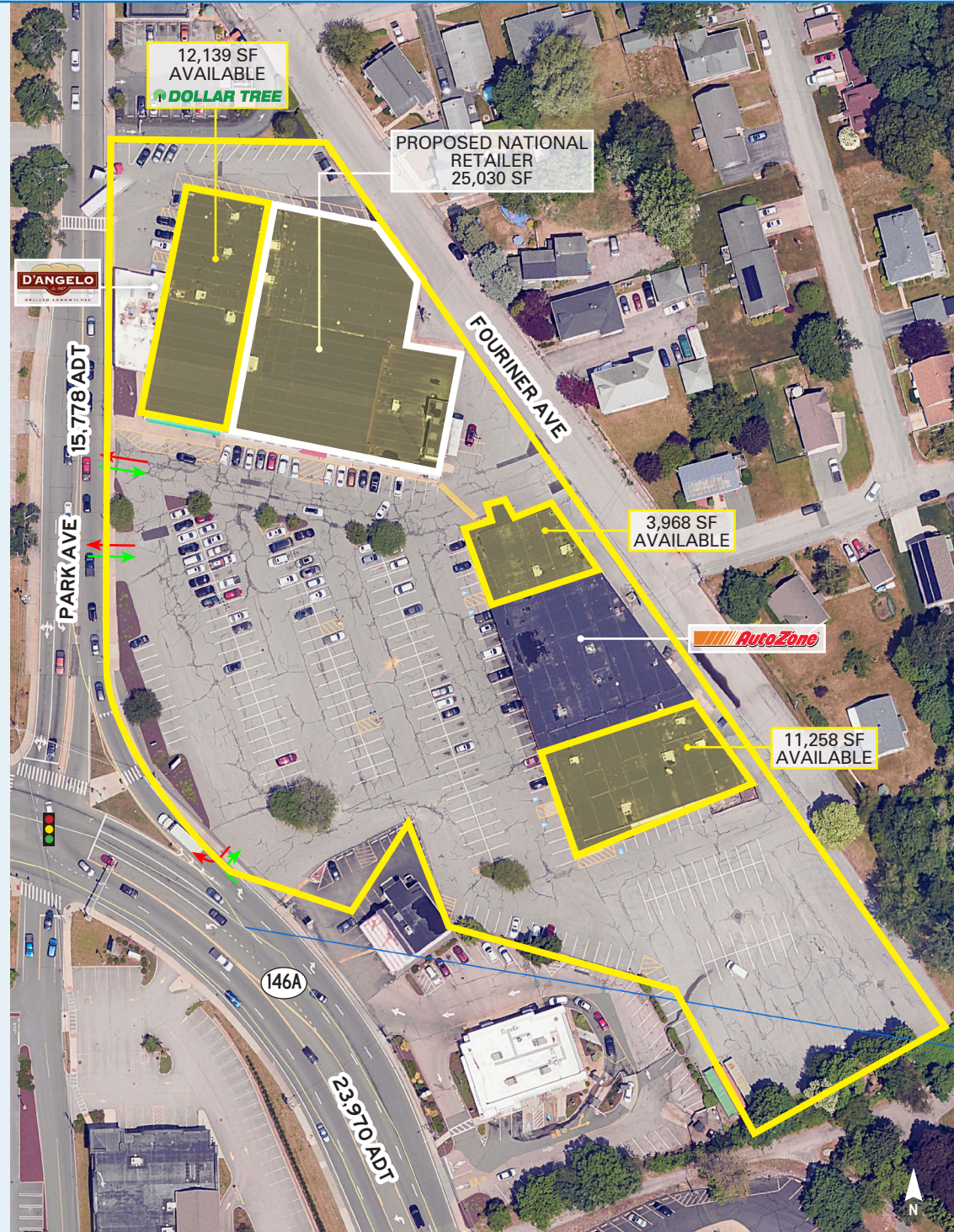
## PROPERTY HIGHLIGHTS

- Up to 12,139 SF Available
- Conveniently located across from Stop & Shop Supermarket at busy, signalized intersection
- Located close to Dowling Village, a 600,000 square foot power center anchored by Walmart Supercenter and Lowe's
- Pylon signage available

## OFFERING SUMMARY

<b>GLA</b>	65,000 SF
<b>PARKING</b>	4.46/1,000 SF (~290 Spaces)
<b>ACREAGE</b>	5.28
<b>ZONE</b>	C-1 Urban Commercial District

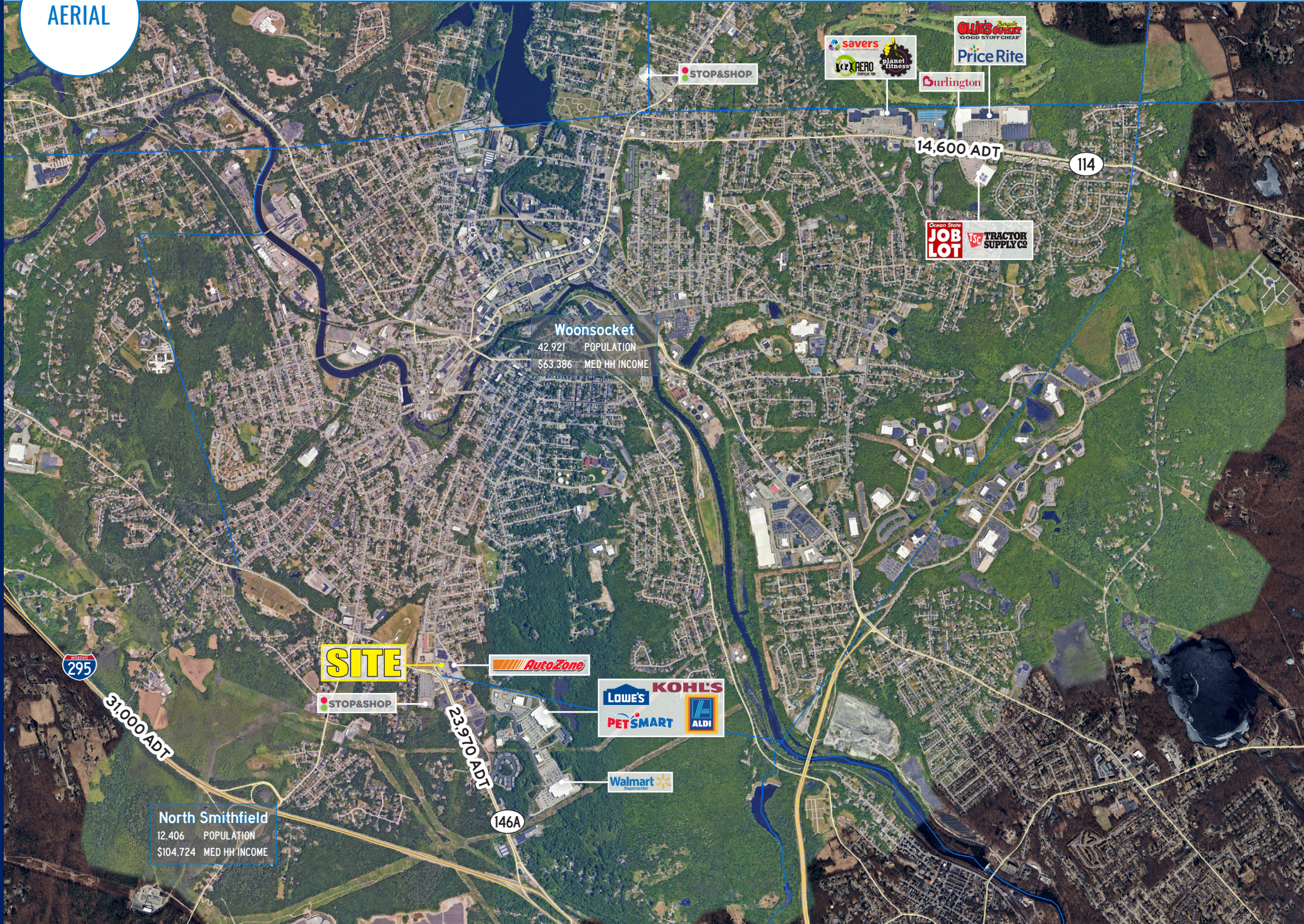
2026 DEMOGRAPHICS	3 MILES	5 MILES	7 MILES
<b>TOTAL POPULATION</b>	62,380	97,159	138,575
<b>DAYTIME POPULATION</b>	57,605	95,570	127,960
<b>AVERAGE HH INCOME</b>	\$94,442	\$111,782	\$127,643
<b>TOTAL HOUSEHOLDS</b>	26,854	39,579	55,291



ZOOM  
AERIAL



AERIAL



WOONSOCKET, RI

# 1400 PARK AVENUE

UP TO 12,139 SF AVAILABLE

**SCOTT BLACK**

617.369.5902  
SBLACK@ATLANTICRETAIL.COM

**JACK LYMAN**

860.391.1736  
JLYMAN@ATLANTICRETAIL.COM



**BOSTON**  
THE PRUDENTIAL CENTER  
BOSTON, MA 02199  
617.239.3600

**ALBANY**

**ATLANTA**

**CHARLOTTE**

**LOS ANGELES**

**NEW YORK CITY**

**ORLANDO**

**PITTSBURGH**

**WEST PALM BEACH**

[WWW.ATLANTICRETAIL.COM](http://WWW.ATLANTICRETAIL.COM)

[LINKEDIN.COM/COMPANY/ATLANTIC-RETAIL-PROPERTIES](https://www.linkedin.com/company/atlantic-retail-properties)

[INSTAGRAM.COM/ATLANTIC\\_RETAIL/](https://www.instagram.com/atlantic_retail/)

**REALTY RESOURCES** **CHAINLINKS**  
RETAIL ADVISORS