

# 299

**3RD AVE**  
Chula Vista, CA, 91910



## ±390 SF OFFICE SPACE AVAILABLE For Lease

**VALLEY COLEMAN** | Lic. 02065336  
(619) 944-1979  
[Valley@PacificCoastCommercial.com](mailto:Valley@PacificCoastCommercial.com)

**BLANCHE GOLIA** | Lic. 01956233  
(619) 458-8025  
[Blanche@PacificCoastCommercial.com](mailto:Blanche@PacificCoastCommercial.com)

**CHASE PELTON** | Lic. 01918260  
(562) 822-5741  
[Chase@PacificCoastCommercial.com](mailto:Chase@PacificCoastCommercial.com)

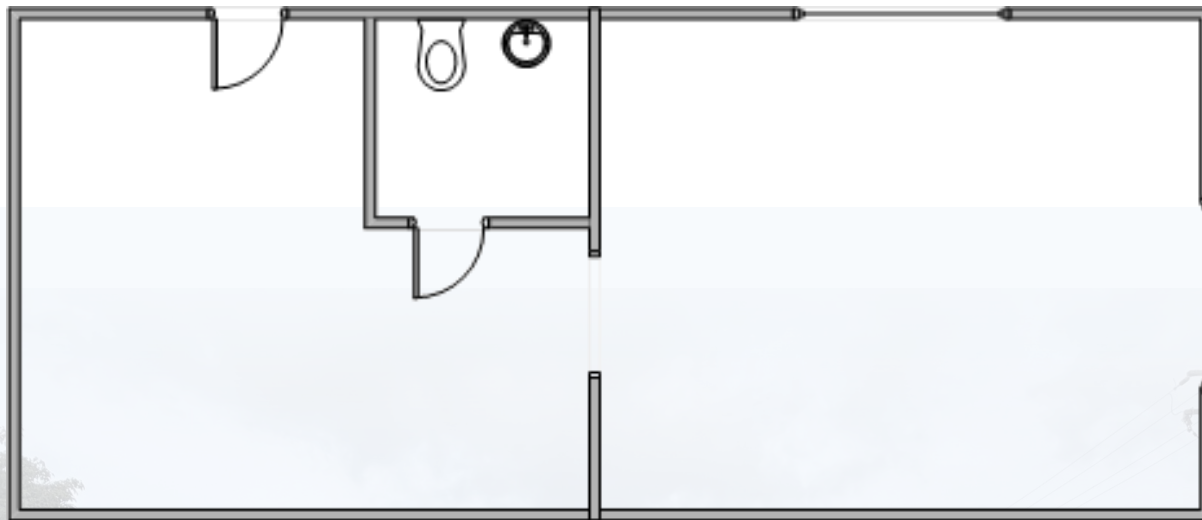
  
**PACIFIC COAST  
COMMERCIAL**  
SALES - MANAGEMENT - LEASING

## FLOOR PLAN

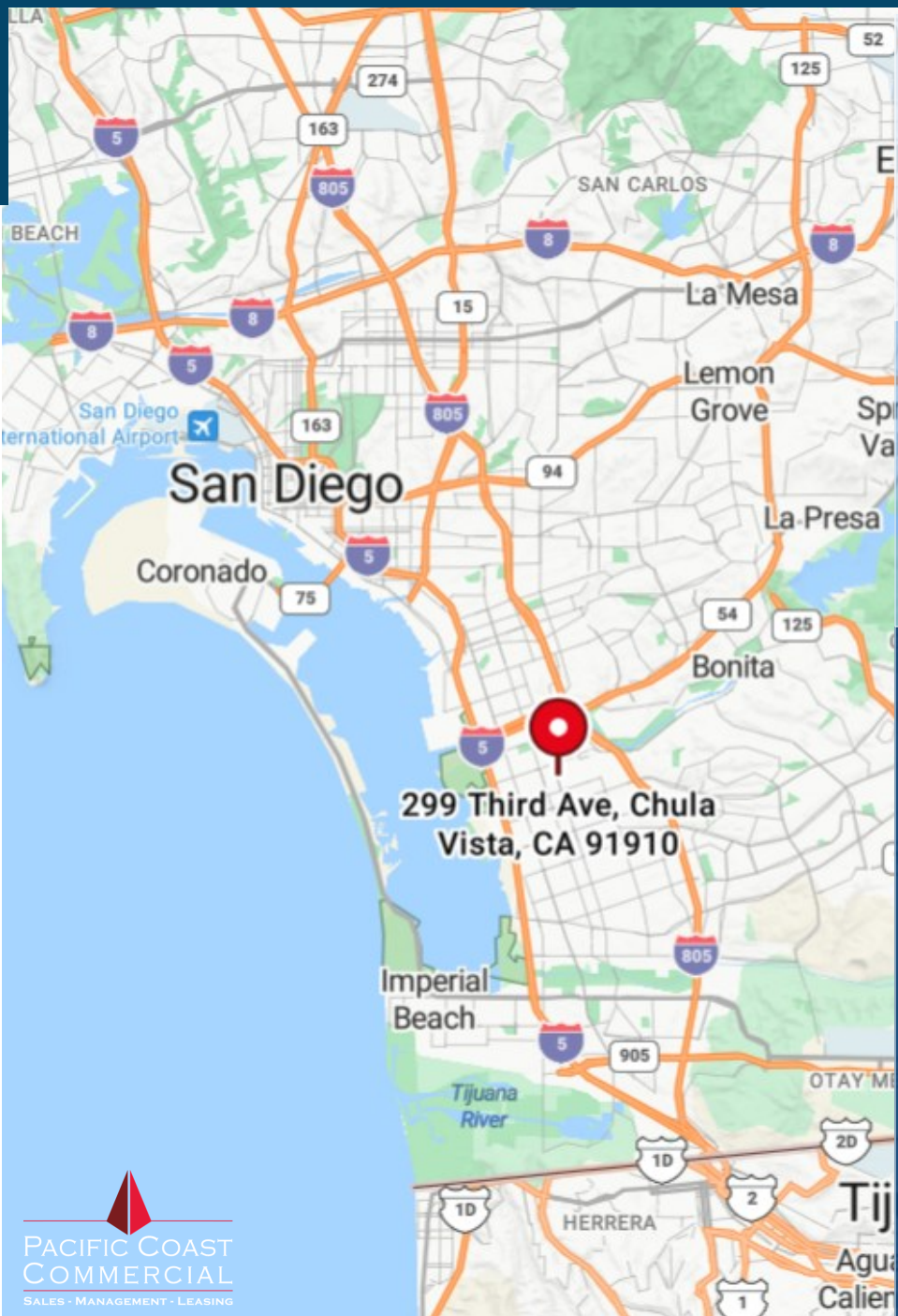
FLOOR PLAN IS NOT TO SCALE; FOR REFERENCE PURPOSES ONLY.


### SUITE 287-B F STREET

- ±390 SF Office Space
- Two (2) Offices
- One (1) Restroom
- Lease Rate: \$1,000/Month Gross



# 299 3RD AVENUE | PROPERTY FEATURES



  
**The Property**  
299 3rd Avenue  
Chula Vista, CA 91910

  
**Availability**  
± 390 SF Office

  
**Parking**  
Public Parking Structure  
Across the Street  
(650 Spaces)

  
**Zoning**  
V-2 (Village)

  
**Lease Rate**  
Office: \$1,000/Month  
Gross

  
**Location**  
Walkable to Other 3rd  
Avenue Shops &  
Restaurants

Located on the west side of Chula Vista, the Third Avenue Village is a historical architectural district that features a newly renovated and picturesque business area, an emerging cultural arts and craft brew scene, and a unique collection of boutiques, eateries and services.

The City of Chula Vista itself is located at the center of one of the richest cultural, economic and environmentally diverse zones in the United States. It is the second-largest City in San Diego County and there have been exceptional advances made in preparing the City for business expansion and attraction, collaborating with Baja California officials, and creating an environment for economic growth and prosperity. The City has established economic development initiatives that have created quality infrastructure, a strong consumer base and a well-educated and experienced workforce.

[Click to Learn More](#)

# MEET YOUR THIRD AVENUE NEIGHBORS!

10



**Groundswell Brewing Co:** Local brewery with a beer philosophy of high-quality and flavor-filled beers that enhance the San Diego lifestyle and pair with food.

9



**El Cruce+241:** The first and only wholly devoted Baja tap-room, wine bar and kitchen committed to sourcing auténtico Baja specialties in San Diego's South County. Come savor south-of-the-border "coastal cuisine at its best" in the heart of Chula Vista's Third Avenue Village!

8



**TG The Gym:** Our team is here to deliver high-quality personal training and the best fitness experience possible to men and women across Chula Vista. We have years of experience helping people from all around the San Diego area work hard, build muscle, and become the best they can possibly be. When you train with us, no obstacle is too great, no goal is too big, and no aspiration is too challenging.

7



**The Balboa South:** Burgers, Beer & Good Cheer

## La Nacional

1

**La Nacional:** The second project from the founders of Machete Beer House in National City, a modern take on a Mexican cantina, centered around curated cocktails.



6



**Suzette:** A French restaurant that brings authentic flavors and European style to Downtown Chula Vista.

**Dark Horse Coffee Roasters:** Local San Diego roasters and coffee shops.

2



**La Pesca Cevicheria Baja:** Serving up fresh seafood, bright flavors, and seriously delicious plates in Downtown Chula Vista!

3



**Bar Sin Nombre:** Beer & Wine bar with an extensive drink menu. This location offers a Hispanic/chicano theme. You will certainly appreciate the lovely relaxed atmosphere and beautiful décor. Perfect spot to watch a Padres game on the multiple TVs set up throughout.

4



**Galu Café & Delicatessen:** Your culinary haven for all things delicious! Our passion for quality shines through in every sip and bite, as we proudly serve organic, locally sourced products from trusted farms. We craft everything from scratch and invite you to savor the difference in our homemade recipes and our fresh, daily-made coffee, sandwiches, and pastries

5



**Farmer's Table:** An Italian country-style restaurant, has opened its fourth location in the Village at 330 F St. The new location is the company's largest, at 10,000 square feet including a large patio. Themed with farmhouse décor, the restaurants are known for a large variety of breakfast and brunch items.

# LOCATED IN CHULA VISTA

±390 SF OFFICE | FOR LEASE

299 3rd Avenue, Chula Vista, CA 91910

## VALLEY COLEMAN

Sales & Leasing Associate  
(619) 944-1979  
Valley@PacificCoastCommercial.com  
Lic. 02065336

## BLANCHE GOLIA

Senior Advisor - Sales & Leasing  
(619) 458-8025  
Blanche@PacificCoastCommercial.com  
Lic. 01956233

## CHASE PELTON

Sales & Leasing Advisor  
(562) 822-5741  
Chase@PacificCoastCommercial.com  
Lic. 01918260

  
**PACIFIC COAST  
COMMERCIAL**  
SALES - MANAGEMENT - LEASING

Office (619) 469-3600 | 10721 Treena Street, Suite 200, San Diego, CA 92131  
www.PacificCoastCommercial.com | Lic. 01209930

The information in this brochure is provided for general marketing purposes only and is believed to be reliable but not guaranteed. Interested parties should verify all details independently, including zoning, measurements, and property condition. The property owner and agents make no warranties or representations and reserve the right to change or withdraw the property or terms at any time without notice. This is not an offer or contract.