

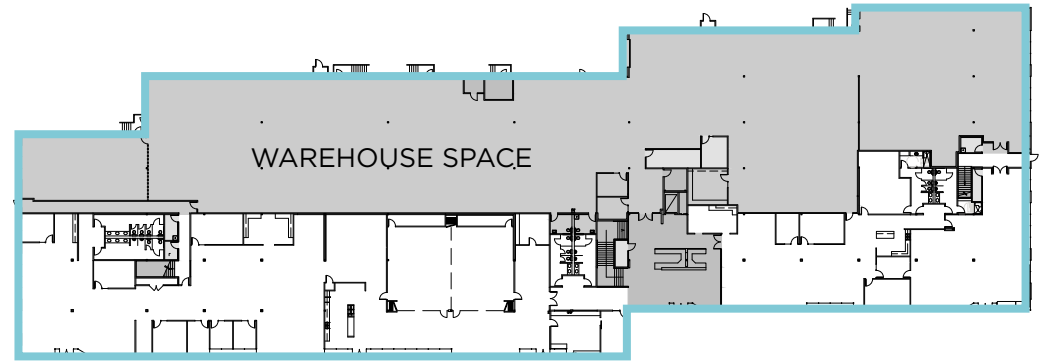
CANYON PARK EAST BUILDING A

22011 26TH AVE SE

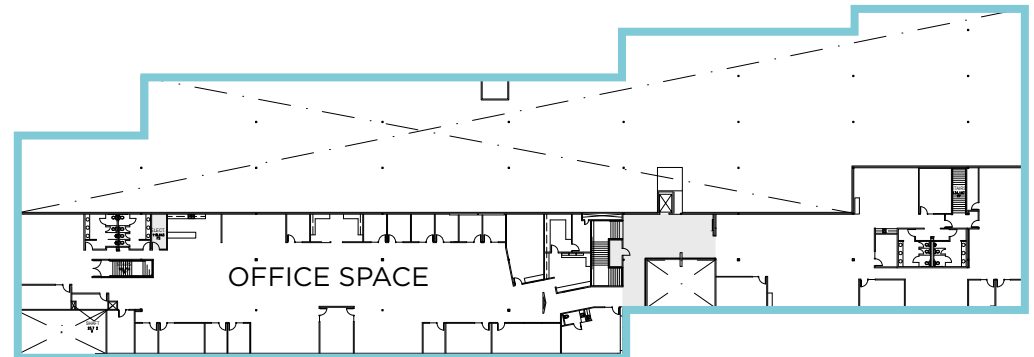
LEASE TYPE:	NNN			LEASE TERM:	Negotiable
AVAILABLE SPACE	OFFICE SF	HIGH BAY WH SF	LIGHT ASSEMBLY/OFF	TOTAL SF	BASE RENT / MO.
Full Building	24,086	27,877	24,382	76,345	Negotiable

FEATURES:

- 1st Floor: 27,877 SF High Bay
24,382 SF Light Assembly/Office
- 2nd Floor: 24,086 SF Office
- Free standing building with dock and grade level loading
- Full-building opportunity
- Large training room facility on 1st Floor
- 24' - 28' clear height



FIRST FLOOR



SECOND FLOOR

