

**CONCESSION AVAILABLE  
FOR QUALIFIED TENANT**

**FOR LEASE**

**±6,229 SF OF MOVE IN  
READY FLEX SPACE**

603 High Tech Ct  
Greer, SC 29650

**Lease Rate:**

**\$14.50/SF  
(NNN)**

- 4 Offices, 4 Restrooms
- Large open work space/  
Cubicle Area
- Reception/Greeting area  
plus break room
- 12 X 16 Drive-in Door
- Fully Conditioned  
Warehouse
- Concession available for  
qualified tenant



**LEE & ASSOCIATES**  
GREENVILLE/SPARTANBURG

**Darath Mackie, CCIM**

Vice President

864.337.1543

[dmackie@lee-associates.com](mailto:dmackie@lee-associates.com)

**Chris Schwab**

Vice President

512.968.1252

[cschwab@lee-associates.com](mailto:cschwab@lee-associates.com)

Interactive PDF



**864.704.1040**

[LeeUpstate.com](http://LeeUpstate.com)



**AVAILABLE SPACE**

Functional Office Layout - Flexible footprint suitable for professional offices or service-oriented businesses.



**LOCATION**

Growing Business Corridor - Located in a high-demand area with nearby corporate offices, industrial hubs, retail, and dining amenities.



**MOVE-IN READY**

Move-In Ready - Well-maintained property with existing office buildout

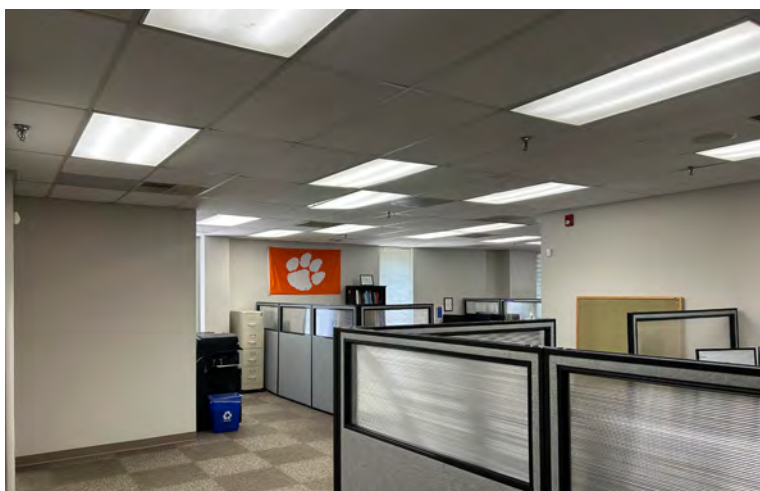


**PARKING**

Ample Parking - On-site surface parking provides easy access for staff and visitors.

# PROPERTY OVERVIEW & PHOTOS

Total Available SF	±6,229 SF
Total Building SF	±20,345 SF
Warehouse SF	±1,646 SF
Lab SF	±834 SF
Office SF	±3,750 SF
Tax Map #	0530050102012
County	Greenville
City Limits	No
Zoning	I-1 <u>Airport Environs</u>
Year Built - Required	1986
Construction Type	Masonry
Signage	Road & Building
Parking	Ample Free
Restrooms	4
Offices	4
Conference Room (s)	2
Break Room (s)	1
Reception Area	1
Suites Available	1
Drive-in Door	1, 12'x16'

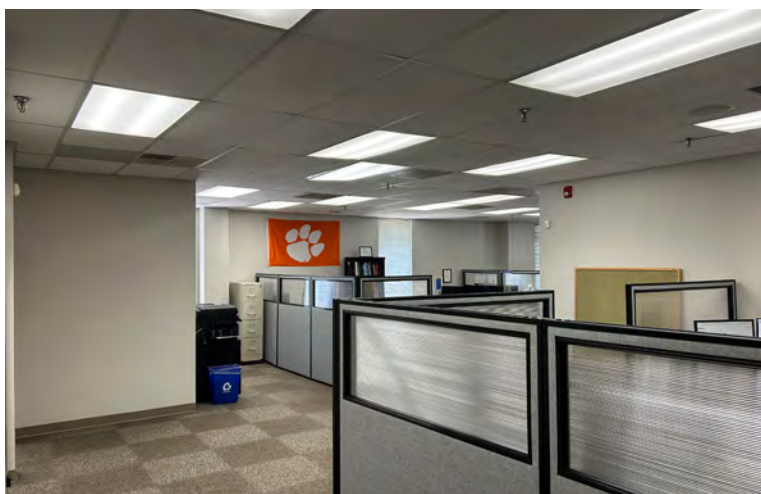
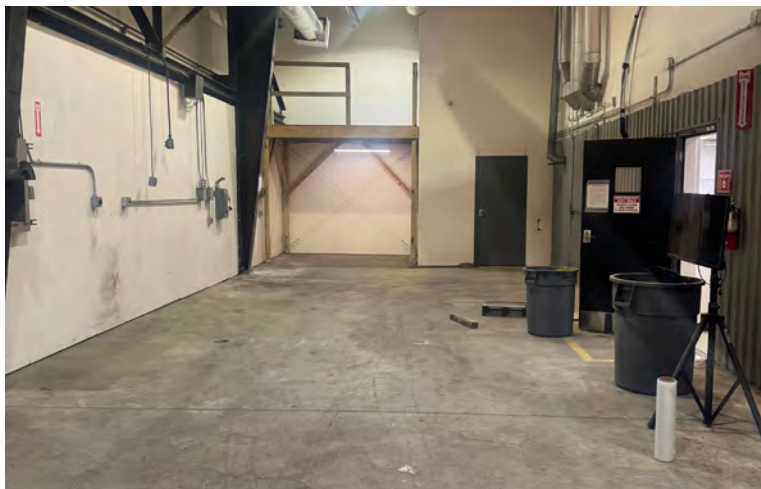


Interactive PDF 

201 W. McBee Ave, Suite 400, Greenville, SC 29601  
 320 E. Main Street, Suite 430, Spartanburg, SC 29302  
**LeeUpstate.com | 864.704.1040**



# PHOTOS



Interactive PDF 

201 W. McBee Ave, Suite 400, Greenville, SC 29601  
320 E. Main Street, Suite 430, Spartanburg, SC 29302  
[LeeUpstate.com](http://LeeUpstate.com) | 864.704.1040



# LOCATION OVERVIEW

- 1 Rockwell Medical Technologies
- 2 Trei Blockchain
- 3 Palmetto Graphics
- 4 Acumen IT
- 5 Pro Source
- 6 Rmax, A Sika Company
- 7 Bausch & Lomb
- 8 Sandvik
- 9 Materials Science
- 10 Total Distribution

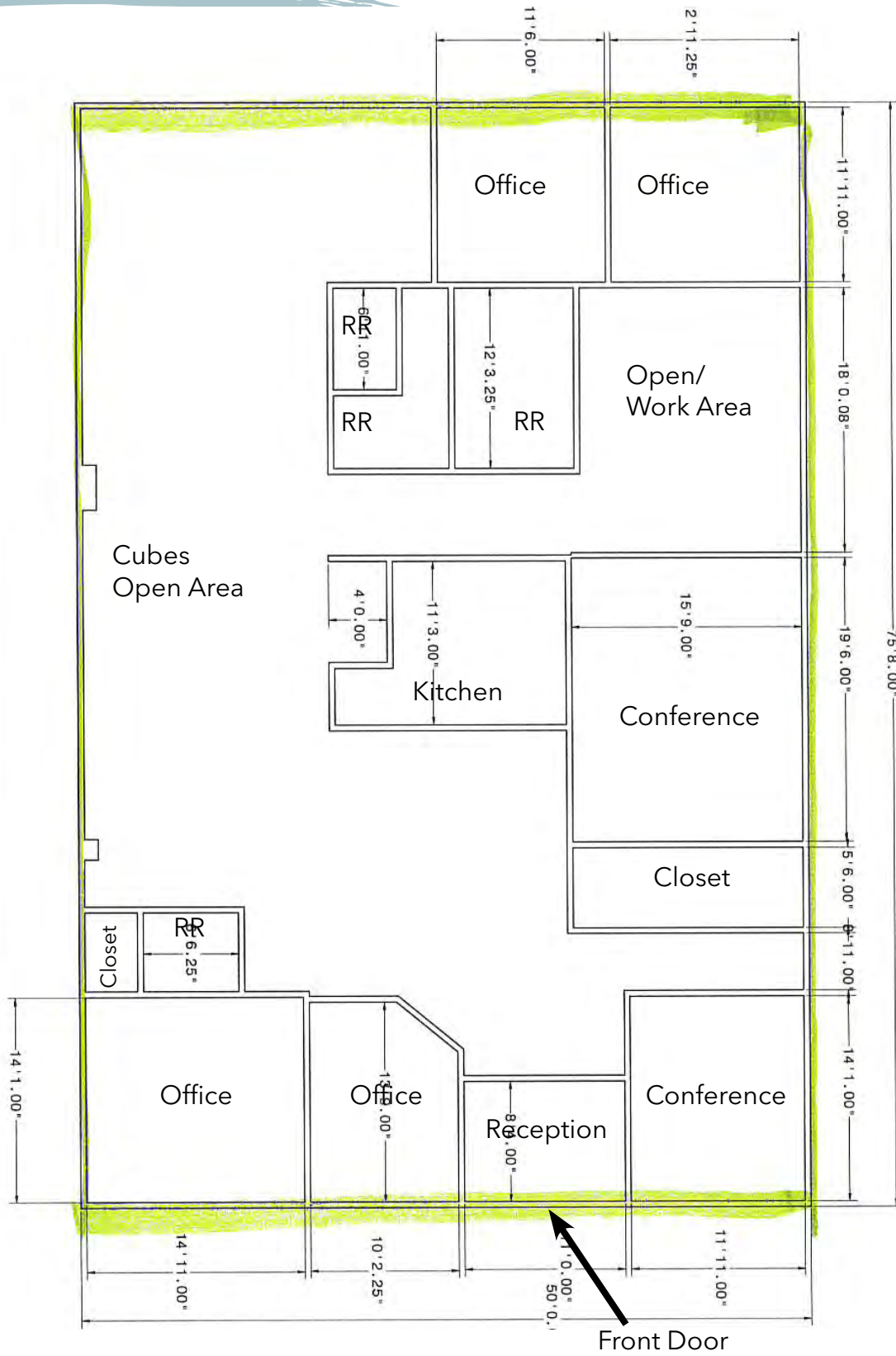


Click Here to View the Interactive Map

Interactive PDF 

201 W. McBee Ave, Suite 400, Greenville, SC 29601  
320 E. Main Street, Suite 430, Spartanburg, SC 29302  
**LeeUpstate.com | 864.704.1040**

# FLOOR PLAN



# FLOOR PLAN



 **Warehouse**

 **Lab**

 **Office**

The Lab space has 2 offices, and eye wash station and an emergency shower.

Warehouse is fully conditioned.





LEE & ASSOCIATES  
GREENVILLE/SPARTANBURG

**864.704.1040**  
**LeeUpstate.com**

**GREENVILLE OFFICE**  
201 W. McBee Ave, Suite 400  
Greenville, SC 29601

**SPARTANBURG OFFICE**  
320 E. Main Street, Suite 430  
Spartanburg, SC 29302

All information furnished regarding the properties and information in this packet is from sources deemed reliable, but no warranty or representation is made to the accuracy thereof and same is submitted to errors, omissions, change of price, rental or other conditions prior to sale, lease or financing or withdrawal without notice. No liability of any kind is to be imposed on the broker herein.

Interactive PDF 

**LEARN MORE**  
**CALL TODAY**



**Darath Mackie,**  
**CCIM**



**864.337.1543**

Vice President  
dmackie@lee-associates.com



**Chris Schwab**



**512.968.1252**

Vice President  
cschwab@lee-associates.com