

SCORPIO Holdings, Ltd.

COCO Honey Round Top, LLC Retail Facilities Project

RNDTP-OVERALL.1

RNDTP-SITE FENCE.0

RNDTP-PARKING.0

RNDTP-SEPTIC.0

RNDTP-SITE-SHOP.1

RNDTP-SITE-RETAIL-EAST.1

RNDTP-SITE-RETAIL-WEST.1

RNDTP-SITE-RETAIL-SOUTH.1

RNDTP-SITE-RETAIL-NORTH.1

RNDTP-SITE-RETAIL-ROOF.0

COCO Honey Overall Site Plan

Site Fencing Addition

COCO Honey Parking and Building Pads

COCO Honey Septic System Layout

COCO Honey Shop Building

COCO Honey Retail Building - East Elevation

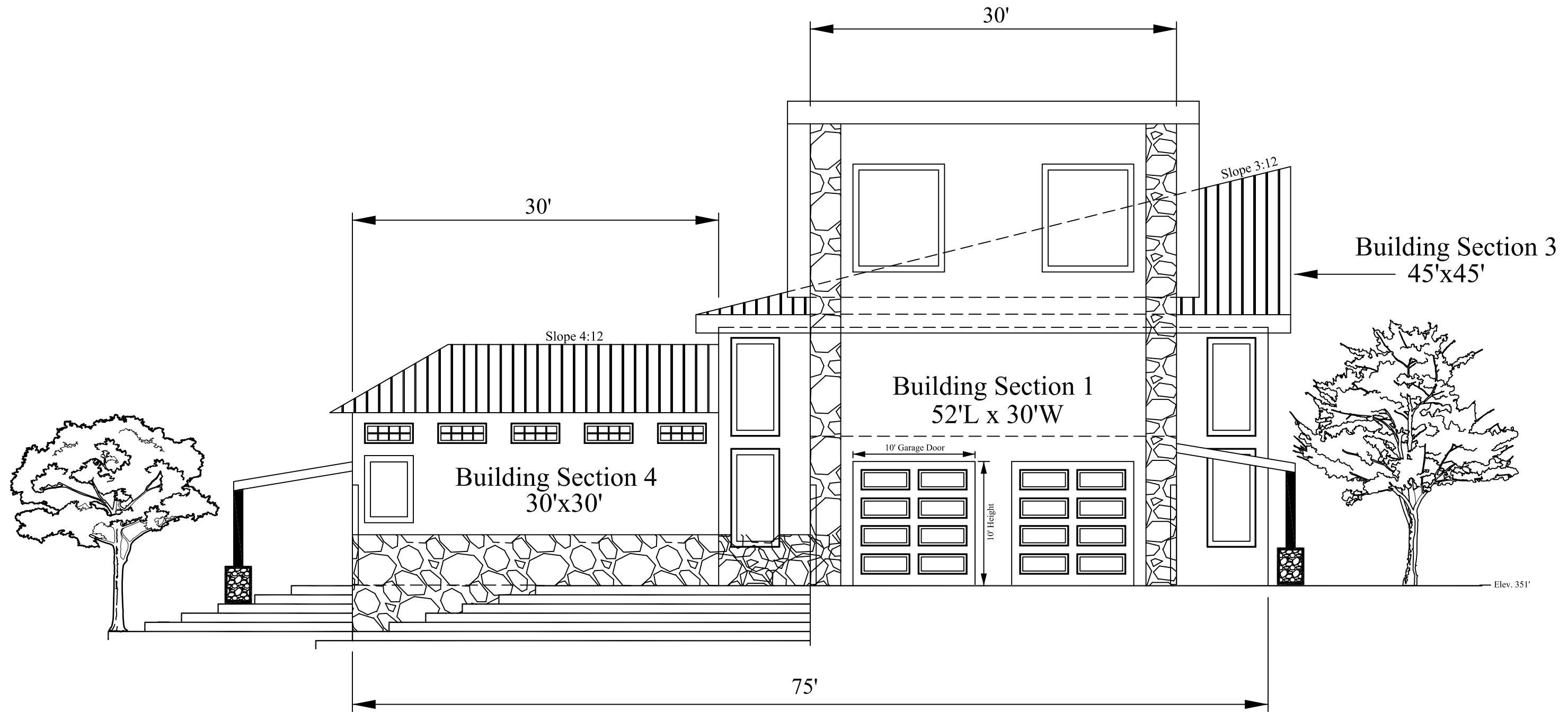
COCO Honey Retail Building - West Elevation

COCO Honey Retail Building - South Elevation

COCO Honey Retail Building - North Elevation

COCO Honey Retail Building - Roof Plan

<small>This drawing is the property of SCORPIO Holdings, Ltd. The information herein contained shall not be used or copied in any manner without the prior written permission of SCORPIO Holdings, Ltd. or its representative.</small>					Title COCO Honey RETAIL FACILITIES		
Prepared By SCORPIO Holdings, Ltd. 5200 Underwood Road, Pasadena, Texas 77507					Project SCORPIO Holdings, Ltd. Round Top, Texas Site - S.H. 237		
Drawn KyK	Date 13-Sept-21	Scale As Noted	Checked	Approved	Sheet 1 of 1	Drawing No. RNDTP-COVER	Revision 0.1



WEST ELEVATION

This drawing is the property of SCORPIO Holdings, Ltd. The information herein contained shall not be used or copied in any manner without the prior written permission of SCORPIO Holdings, Ltd. or its representative.		Title COCO Honey Retail Building - East Elev.	
Prepared By SCORPIO Holdings, Ltd. 5200 Underwood Road, Pasadena, Texas 77507		Project SCORPIO Holdings, Ltd. Round Top, Texas Site - S.H. 237	
Drawn Kyle K.	Date 23-April-21	Scale 2" = 1'	Revision 0.1

DRAWING NO.	DRAWING TITLE	NO.	ISSUED	BY	DATE	NO.	DESCRIPTION	BY	DATE	CHECK	APPR.
	REFERENCE DRAWINGS										
		0.1	FOR PROPOSED GC REVIEW	KYK	09/10/21						
		0	FOR COMMENTS AND REVIEW	KYK	02/23/21						
		0.1	ADDED DIMENSIONS FOR BUILDING SECTIONS	KYK	09/10/21						

