

NEWMARK

RIVERS BUSINESS COMMONS

8955-8975 GUILFORD ROAD



Rivers Business Commons



8925

10000 Rivers Business Commons  
10000 Rivers Business Commons  
10000 Rivers Business Commons

8955

10000 Rivers Business Commons  
10000 Rivers Business Commons  
10000 Rivers Business Commons

8975

10000 Rivers Business Commons  
10000 Rivers Business Commons  
10000 Rivers Business Commons

8975

10000 Rivers Business Commons  
10000 Rivers Business Commons  
10000 Rivers Business Commons

MANAGED BY  
PROPERTY SERVICES GROUP

# 8955-8975 GUILFORD ROAD, COLUMBIA, MARYLAND

## PROPERTY HIGHLIGHTS

Single story buildings with private suite entrances

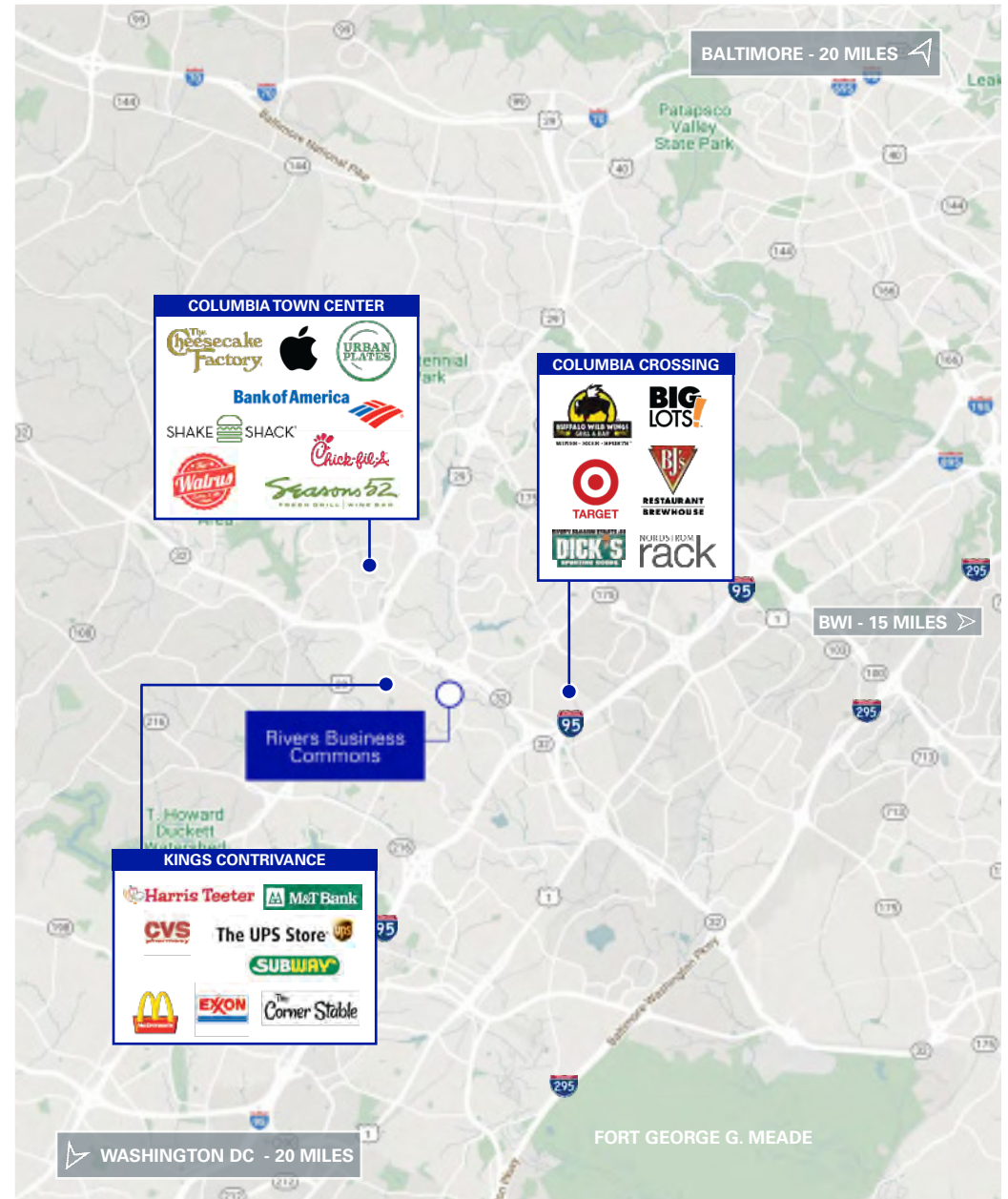
Beautiful courtyard and pond

Excellent non-stop access to I-95 and the Baltimore-Washington Parkway (295)

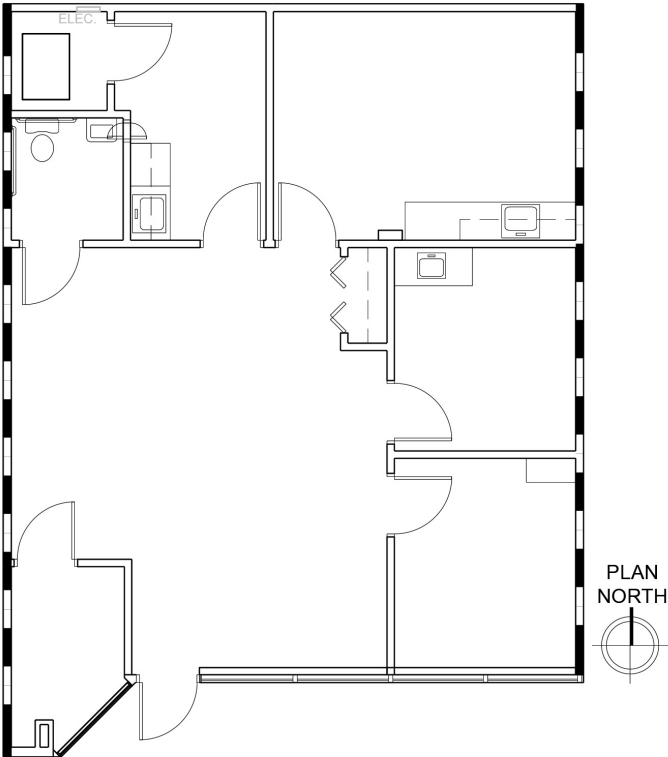
Centrally located between Baltimore and Washington, D.C.

Close proximity to Baltimore Washington Thurgood Marshall Airport and Fort George G. Meade

Just minutes from an abundance of amenities that include Starbucks, Dunkin Donuts, Wegmans, Harris Teeter, Whole Foods, and much more

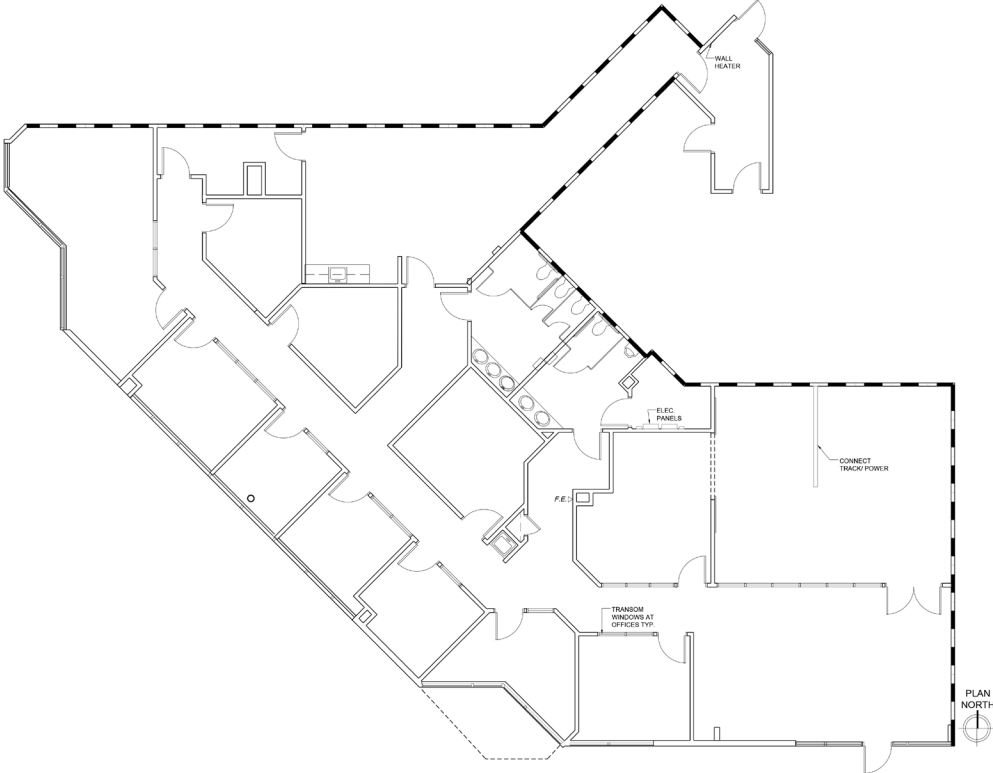


SUITE 140 - 1,170 SF



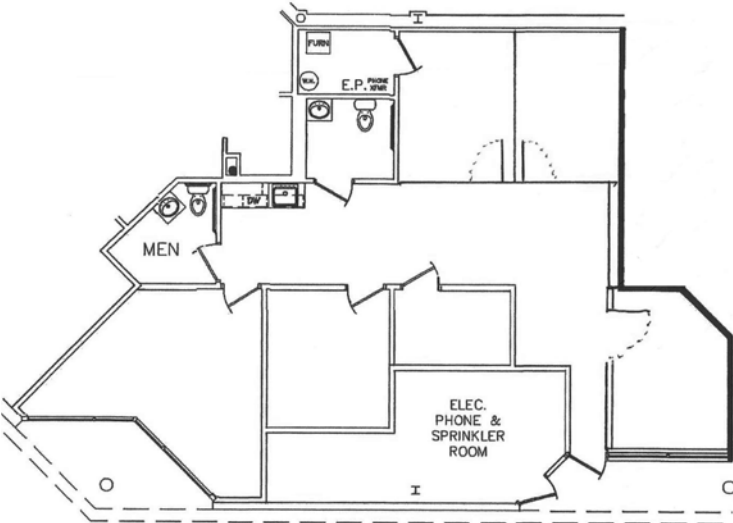
1 AS-BUILT-  
ID-1 1/8"=1'-0"

SUITE 240 - 4,722 SF

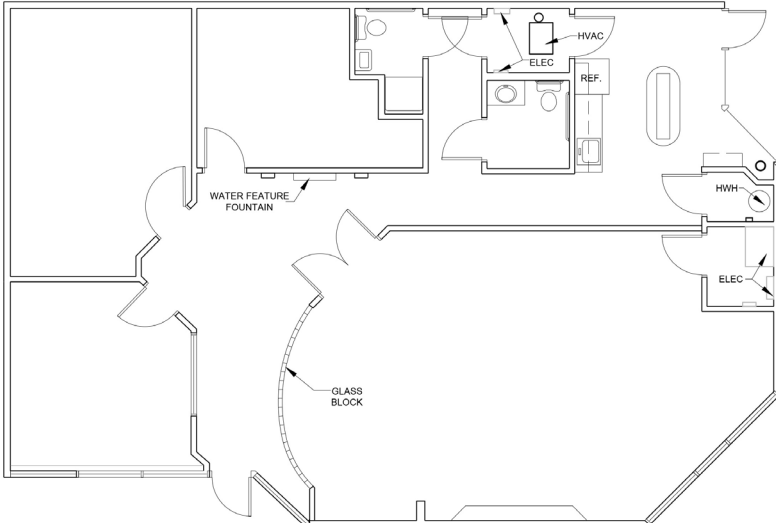


PLAN NORTH

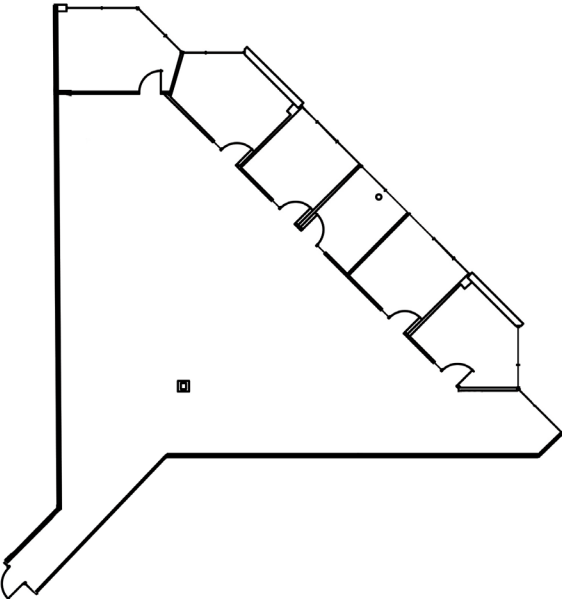
SUITE 130 - 2,058 SF



SUITE 160 - 2,081 SF



SUITE 295 - 3,585 SF



---

# 8955-8975 Guilford Road

---

*For Leasing Information:*

**Dan Callihan**

*Executive Managing Director*

t 410-625-4213

dan.callihan@nmrk.com

**James Cumber**

*Managing Director*

t 410-625-4203

james.cumber@nmrk.com

The information contained herein has been obtained from sources deemed reliable but has not been verified and no guarantee, warranty or representation, either express or implied, is made with respect to such information. Terms of sale or lease and availability are subject to change or withdrawal without notice.