

DENTAL OFFICE SPACE
FOR SALE
2,750± RSF



MUR-LEN PROFESSIONAL BUILDING | **975 N. MUR-LEN ROAD**
OLATHE, KANSAS 66062

PROPERTY FEATURES

- 2,750± RSF
- Sale Price ~~\$800,000~~-\$750,000
- Turnkey Dental Office Condo (former pediatric practice)
- Class A Interior Finishes (completed in 2025)
- Furniture, Fixtures & Equipment Available
- Plumbed and Ready for Occupancy
- Dental Specific Property
- Condo Association Reduces Owner Responsibilities
- Reasonable Acquisition Cost vs. Replacement Cost

For more information, please contact:

TOM WARD, SIOR

Principal, Office Brokerage
913.706.7520
tward@kessingerhunter.com

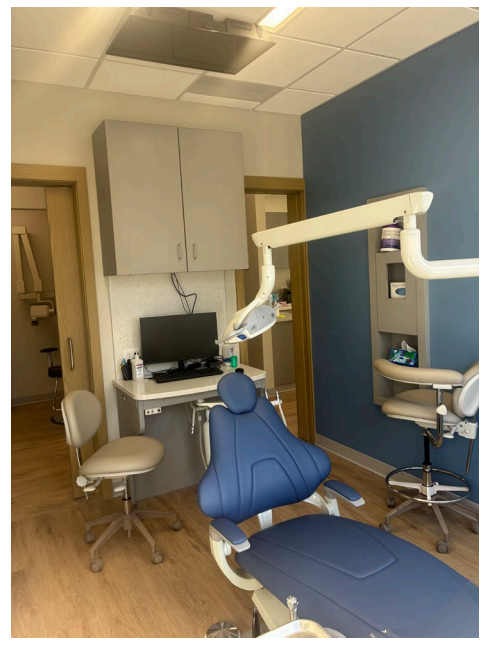
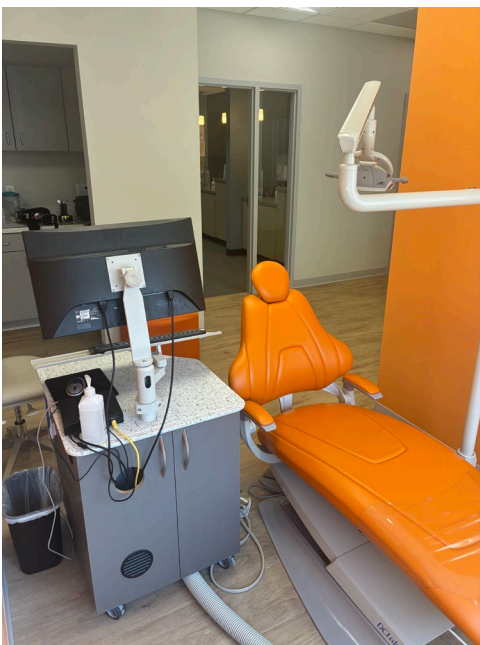
CASSIDY MEARS

Principal, Office Brokerage
913.488.8669
cmears@kessingerhunter.com

KESSINGER HUNTER & COMPANY, LC

2600 Grand Boulevard, Suite 700
Kansas City, MO 64108
816.842.2690
www.kessingerhunter.com

MUR-LEN PROFESSIONAL BUILDING | **975 N. MUR-LEN ROAD**
Olathe, Kansas 66062



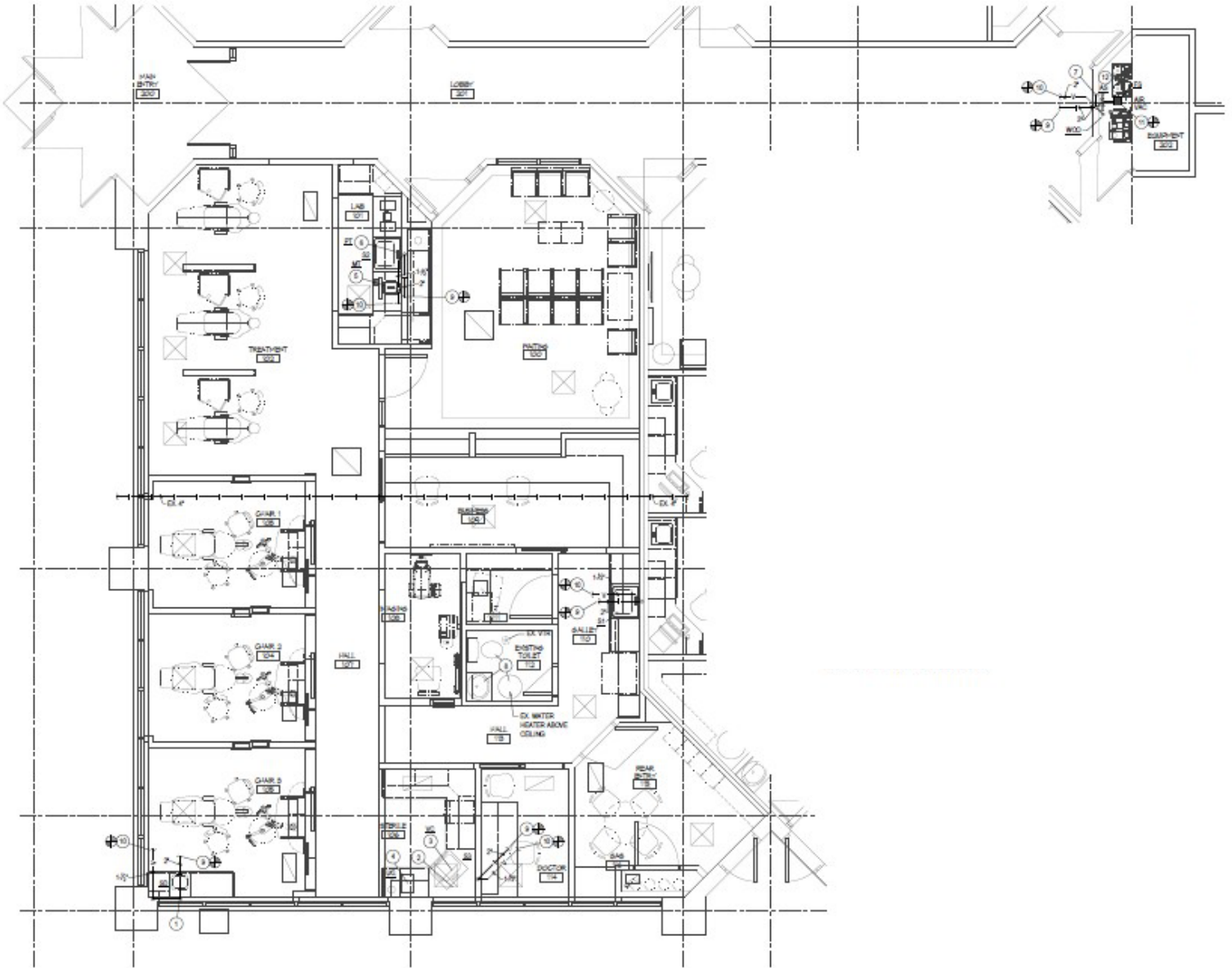
MUR-LEN PROFESSIONAL BUILDING | **975 N. MUR-LEN ROAD**
Olathe, Kansas 66062



Class A
Interior
Finishes



MUR-LEN PROFESSIONAL BUILDING | **975 N. MUR-LEN ROAD**
Olathe, Kansas 66062



KESSINGER HUNTER
commercial real estate

For more information, please contact:

TOM WARD, SIOR
Principal, Office Brokerage
913.706.7520
tward@kessingerhunter.com

CASSIDY MEARS
Principal, Office Brokerage
913.488.8669
cmears@kessingerhunter.com

KESSINGER HUNTER & COMPANY, LC
2600 Grand Boulevard, Suite 700
Kansas City, MO 64108
816.842.2690
www.kessingerhunter.com