



## 111 BARCLAY BOULEVARD

Lincolnshire Corporate Center

### SIZE:

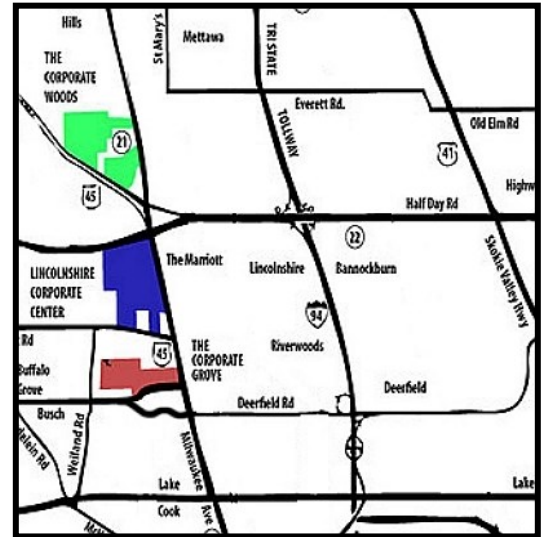
Building: 78,182 Sq. Ft.

Height: 4 Stories

### NEW INDIVIDUAL OFFICES

Monthly Rent includes: Electric, Internet, 4 hours per month of shared conference room.

Suite 206	Single Office \$825 per mo AVAILABLE
Suite 211	Single Office \$695 per mo AVAILABLE
Suite 212	Single Office \$550 per mo AVAILABLE
Suite 363	Single Office \$550 per mo AVAILABLE
Suite 367	Single Office \$650 per mo AVAILABLE
Suite 374	Single Office \$650 per mo AVAILABLE



### HIGHLIGHTS:

- Easy access via walking paths to other Lincolnshire Corporate Center hotels, restaurants and daycare center
- Enjoy Cheesecake Factory, Lincolnshire Commons restaurants and shopping
- Directly across Milwaukee Avenue from Marriott Lincolnshire Resort
- Minutes to new Lifetime Fitness in The Corporate Woods
- Miles of Walking/Jogging Paths
- Walk to public transit connections
- Building Conference Room

### Exclusive Leasing and Management Agents



#### VAN VLISSINGEN AND CO.

One Overlook Point  
Lincolnshire Corporate Center  
Lincolnshire, Illinois 60069

**847.634.2300**

**Chuck Lamphere, President**

[crl@vvco.com](mailto:crl@vvco.com)

**Gordon Lamphere, VP**

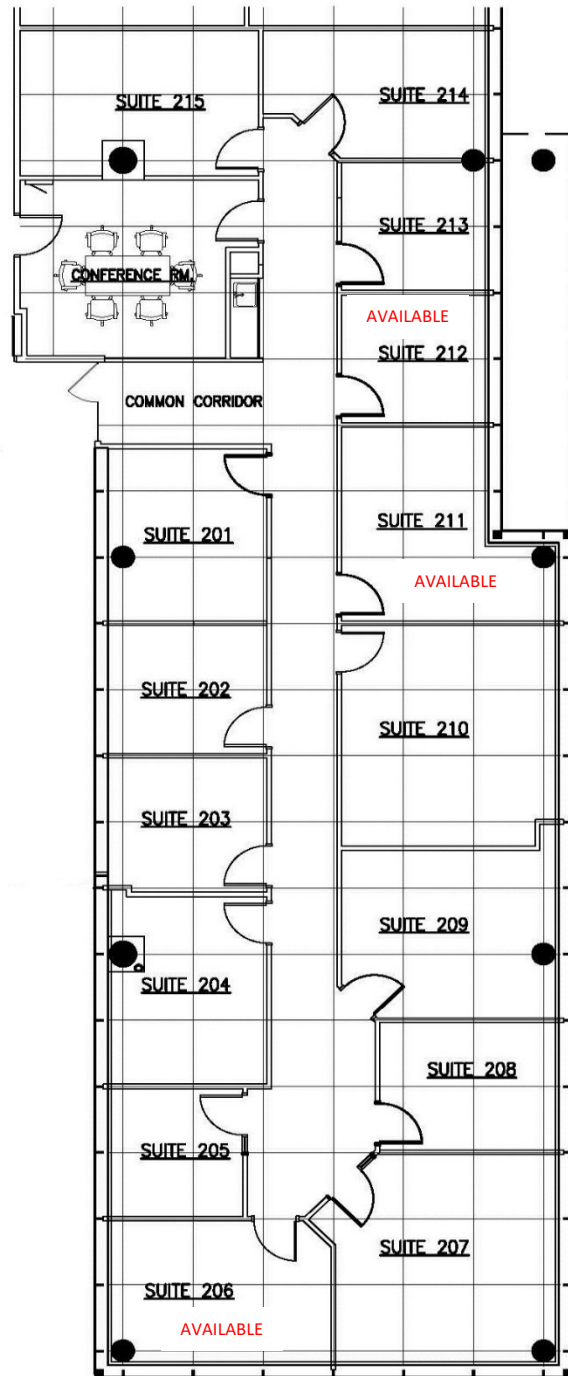
[gcl@vvco.com](mailto:gcl@vvco.com)

**Nick Panarese, Executive VP, SIOR**

[ndp@vvco.com](mailto:ndp@vvco.com)

# 111 BARCLAY BOULEVARD

Lincolnshire Corporate Center  
2<sup>nd</sup> Floor Mini Suites 201-215



## Exclusive Leasing and Management Agents



**VAN VLISINGEN AND CO.**

One Overlook Point  
Lincolnshire Corporate Center  
Lincolnshire, Illinois 60069

**847.634.2300**

Chuck Lamphere, President  
[crl@vvco.com](mailto:crl@vvco.com)

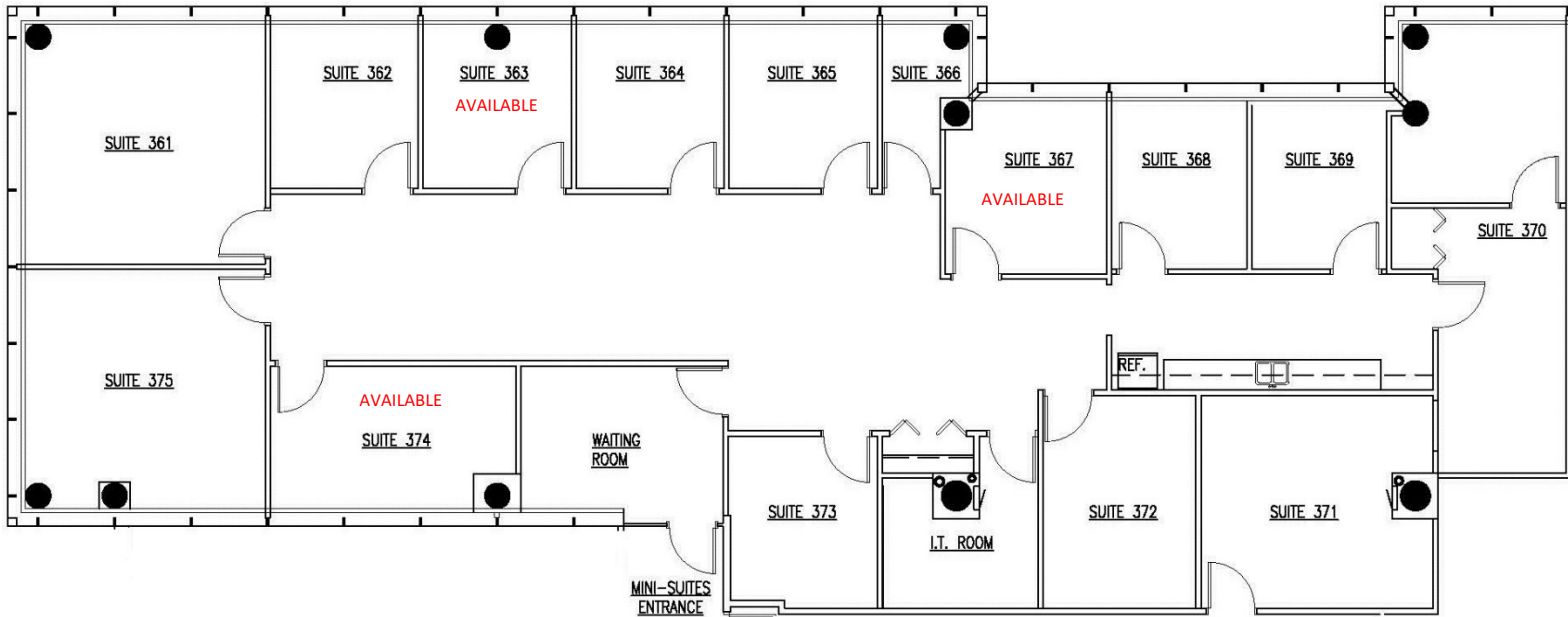
Gordon Lamphere, VP  
[gcl@vvco.com](mailto:gcl@vvco.com)

Nick Panarese, Executive VP, SIOR  
[ndp@vvco.com](mailto:ndp@vvco.com)

*Above information is subject to verification and no liability for errors or omissions is assumed. Price is subject to change and listing withdrawn without notice. Members of this firm have an ownership interest in this property. © Copyright 2026 All Rights Reserved*

# 111 BARCLAY BOULEVARD

Lincolnshire Corporate Center  
3rd Floor Mini Suites 361-375



## Exclusive Leasing and Management Agents



**VAN VLISSINGEN AND CO.**

One Overlook Point  
Lincolnshire Corporate Center  
Lincolnshire, Illinois 60069

**847.634.2300**

Chuck Lamphere, President

[crl@vvco.com](mailto:crl@vvco.com)

Gordon Lamphere, VP

[gcl@vvco.com](mailto:gcl@vvco.com)

Nick Panarese, Executive VP, SIOR

[ndp@vvco.com](mailto:ndp@vvco.com)

*Above information is subject to verification and no liability for errors or omissions is assumed. Price is subject to change and listing withdrawn without notice. Members of this firm have an ownership interest in this property. © Copyright 2026 All Rights Reserved*