

MARKET PLACE TOWER SUBLEASE

PLUG AND PLAY SUBLEASE OPPORTUNITY

2025 1ST AVE, SEATTLE, WA



Property Highlights

6,528 rentable square feet

Spectacular views of Elliot Bay

Lease through May 31, 2027

Just steps from Pike Place Market

Amazing amenity space on first floor with craft beverages and coffee for tenants

Showers in building

\$25/sf/NNN

\$2.00/sf/yr real estate fee

LEED gold building

LARRY BLACKETT
206.296.9645
larry.blackett@kidder.com

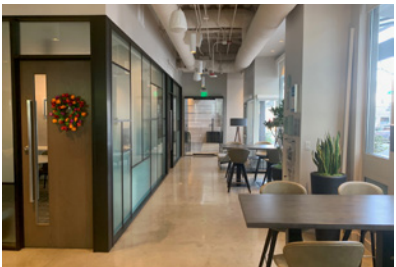
DOUG KLEIN
206.248.7348
doug.klein@kidder.com

KIDDER.COM

This information supplied herein is from sources we deem reliable. It is provided without any representation, warranty, or guarantee, expressed or implied as to its accuracy. Prospective Buyer or Tenant should conduct an independent investigation and verification of all matters deemed to be material, including, but not limited to, statements of income and expenses. Consult your attorney, accountant, or other professional advisor.



MARKET PLACE TOWER SUBLEASE



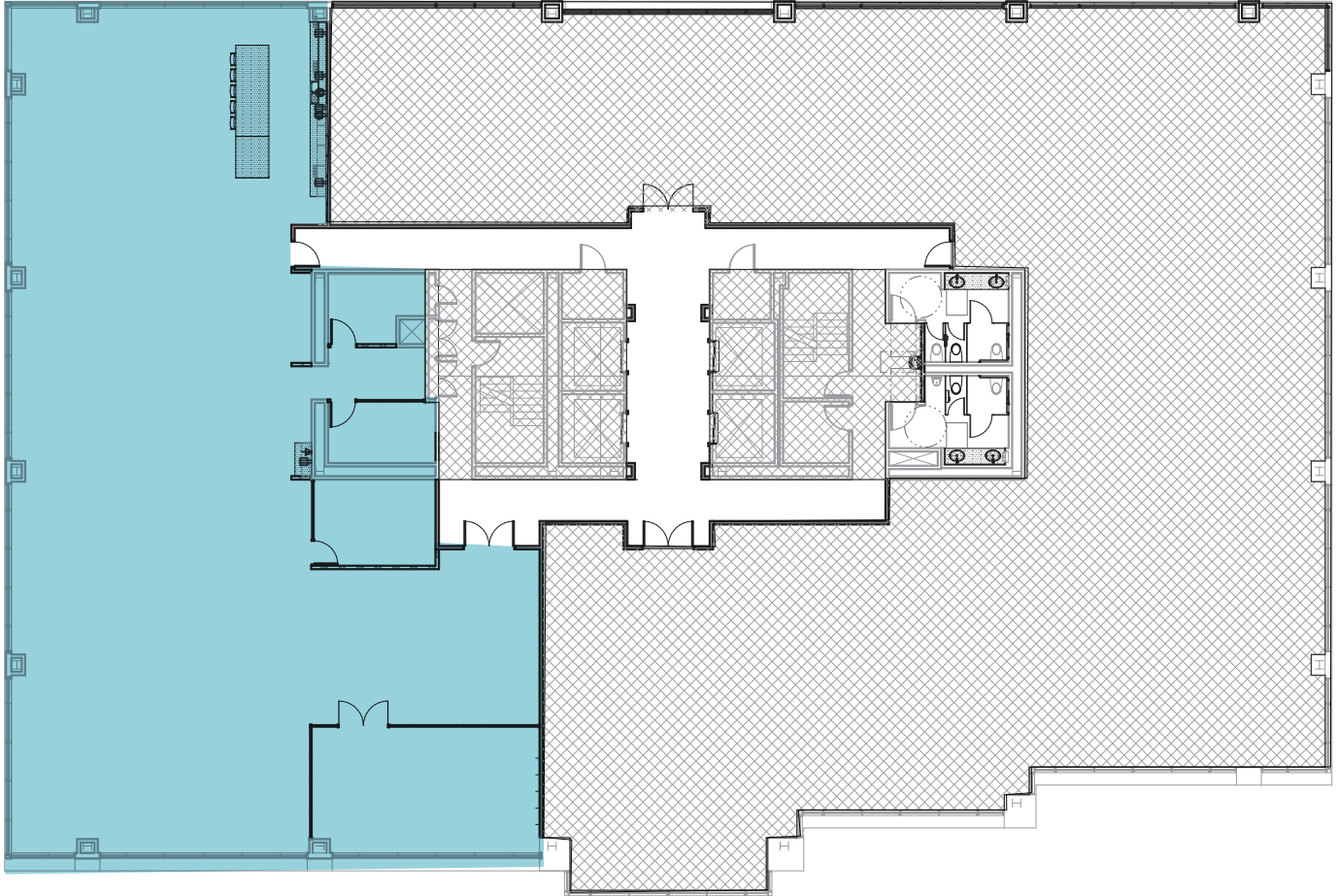
*Furniture shown shall be removed by sublessor

KIDDER.COM

This information supplied herein is from sources we deem reliable. It is provided without any representation, warranty, or guarantee, expressed or implied as to its accuracy. Prospective Buyer or Tenant should conduct an independent investigation and verification of all matters deemed to be material, including, but not limited to, statements of income and expenses. Consult your attorney, accountant, or other professional advisor.



FLOOR PLAN



6,528 SF

AVAILABLE

\$25

SF/NNN

\$2.00

SF/YR REAL ESTATE FEE

5/31/27

LEASE THROUGH

KIDDER.COM

This information supplied herein is from sources we deem reliable. It is provided without any representation, warranty, or guarantee, expressed or implied as to its accuracy. Prospective Buyer or Tenant should conduct an independent investigation and verification of all matters deemed to be material, including, but not limited to, statements of income and expenses. Consult your attorney, accountant, or other professional advisor.