

INDUSTRIAL SPACE FOR LEASE

12893 ALCOSTA BLVD, SAN RAMON, CA 94583



±3,896 - ±3,909 RSF Industrial Space Available For Lease in San Ramon

Building Signage Available

Suites include warehouse featuring 22' clear height, and 16' grade level doors

Ideally located multi-tenant industrial project in San Ramon, CA

Locally owned and managed

Parking ratio: 2:1,000

*For more leasing
information contact*

WILL BALLOWE
Kidder Mathews
925.389.2499
will.ballowe@kidder.com
LIC N° 02053125

BLAKE DICUS
Lee & Associates
925.737.4144
bdicus@lee-associates.com
LIC N° 02074870

KIDDER.COM

This information supplied herein is from sources we deem reliable. It is provided without any representation, warranty, or guarantee, expressed or implied as to its accuracy. Prospective Buyer or Tenant should conduct an independent investigation and verification of all matters deemed to be material, including, but not limited to, statements of income and expenses. Consult your attorney, accountant, or other professional advisor.

LEE & ASSOCIATES
COMMERCIAL REAL ESTATE SERVICES

km Kidder Mathews

SUITE A

Current Layout

±3,909 RSF

AVAILABLE

CONTACT

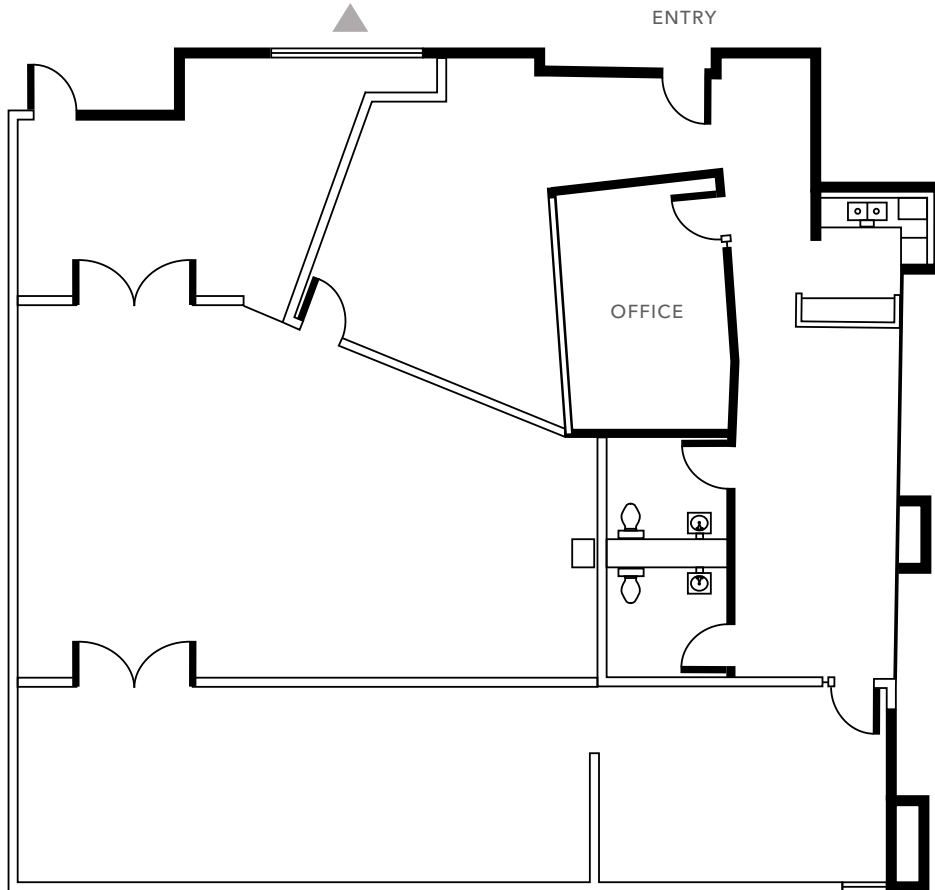
BROKERS FOR PRICING

NOW

AVAILABLE

▲ Grade level loading

FLOOR PLAN NOT TO SCALE



WILL BALLOWE Kidder Mathews | 925.389.2499 | will.ballowe@kidder.com | LIC N° 02053125

BLAKE DICUS Lee & Associates | 925.737.4144 | bdicus@lee-associates.com | LIC N° 02074870

KIDDER.COM

This information supplied herein is from sources we deem reliable. It is provided without any representation, warranty, or guarantee, expressed or implied as to its accuracy. Prospective Buyer or Tenant should conduct an independent investigation and verification of all matters deemed to be material, including, but not limited to, statements of income and expenses. Consult your attorney, accountant, or other professional advisor.



SUITE A

Hypothetical Layout

+3,909 RSF

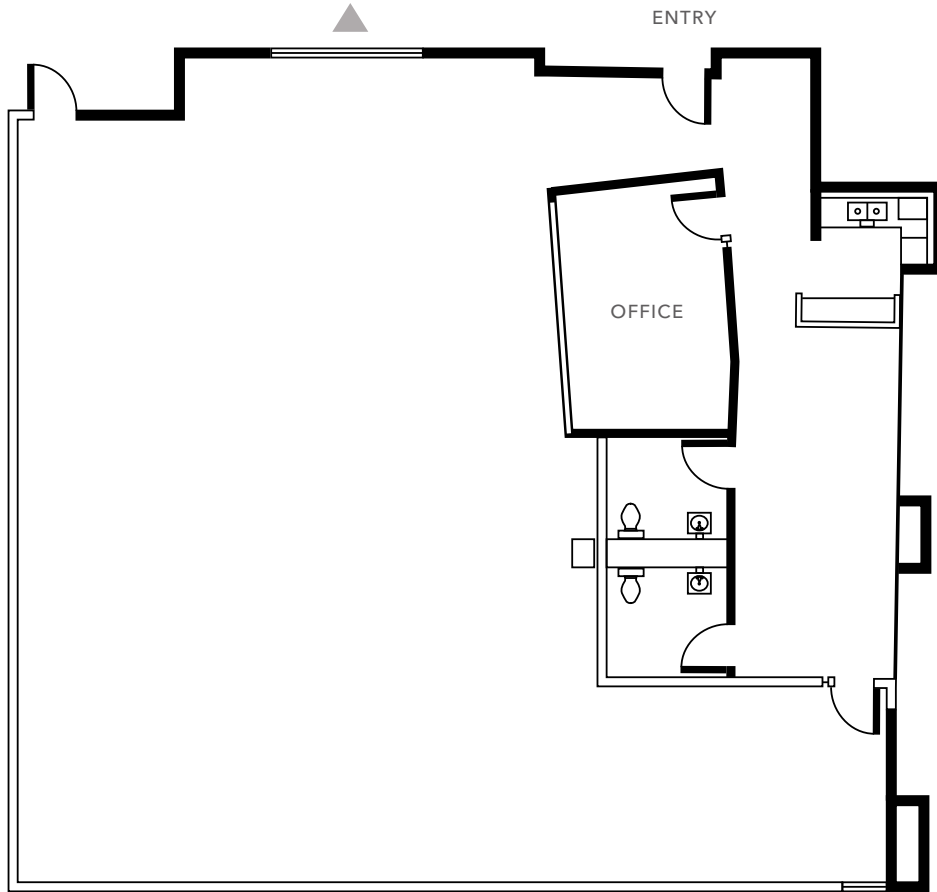
AVAILABLE

CONTACT

BROKERS FOR PRICING

▲ Grade level loading

FLOOR PLAN NOT TO SCALE



WILL BALLOWE Kidder Mathews | 925.389.2499 | will.ballowe@kidder.com | LIC N° 02053125

BLAKE DICUS Lee & Associates | 925.737.4144 | bdicus@lee-associates.com | LIC N° 02074870

KIDDER.COM

This information supplied herein is from sources we deem reliable. It is provided without any representation, warranty, or guarantee, expressed or implied as to its accuracy. Prospective Buyer or Tenant should conduct an independent investigation and verification of all matters deemed to be material, including, but not limited to, statements of income and expenses. Consult your attorney, accountant, or other professional advisor.



SUITES K & L

+3,896 RSF

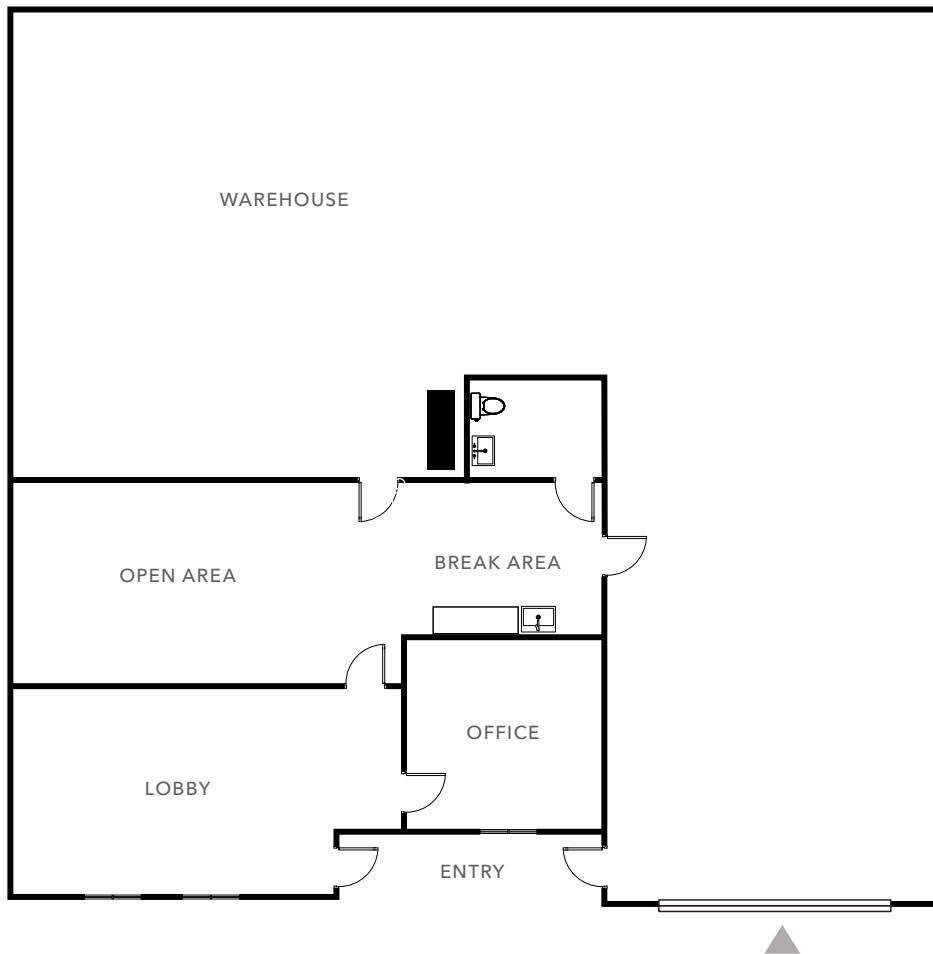
AVAILABLE

CONTACT

BROKERS FOR PRICING

▲ Grade level loading

FLOOR PLAN NOT TO SCALE



WILL BALLOWE | Kidder Mathews | 925.389.2499 | will.ballowe@kidder.com | LIC N° 02053125

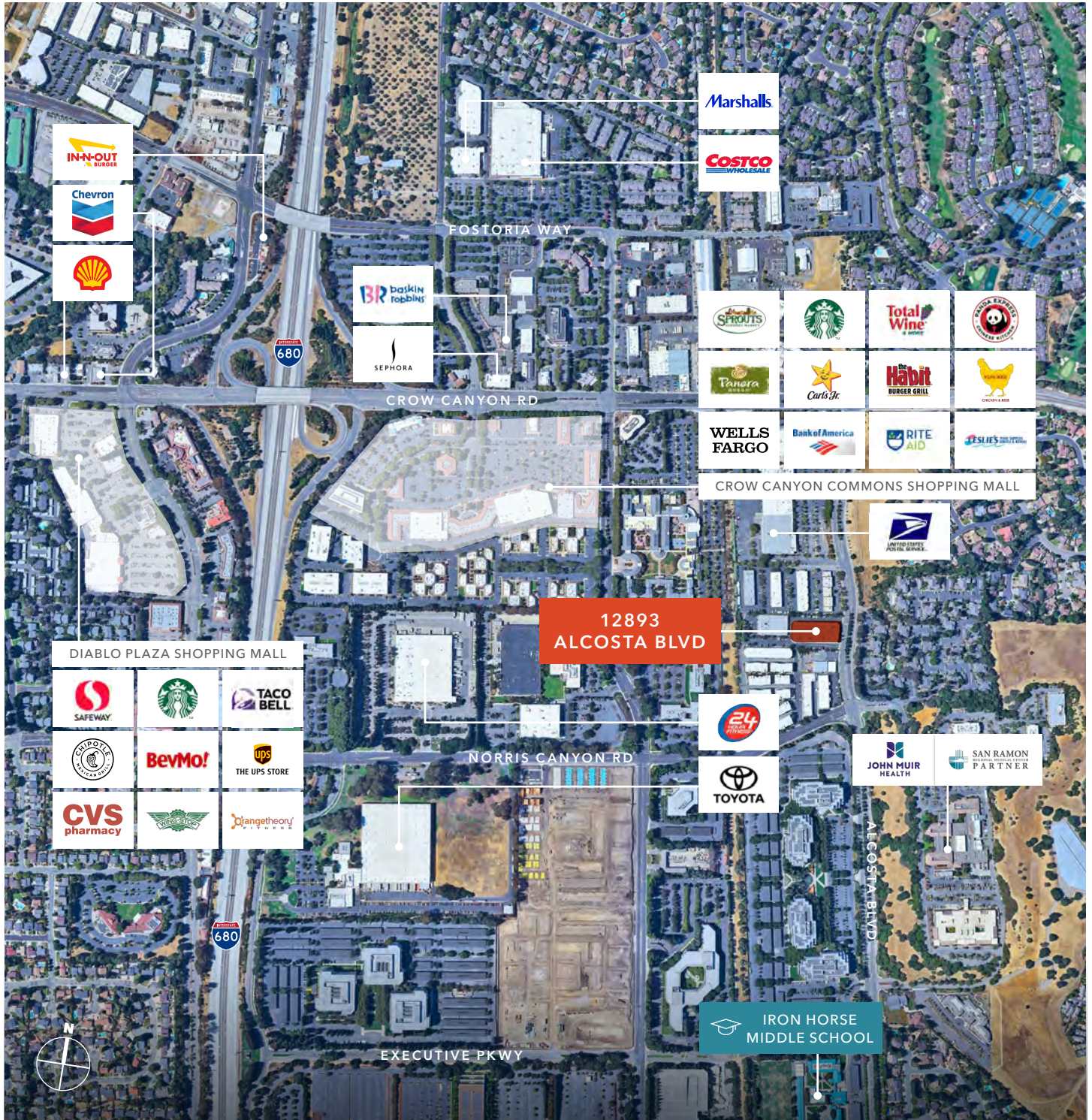
BLAKE DICUS | Lee & Associates | 925.737.4144 | bdicus@lee-associates.com | LIC N° 02074870

KIDDER.COM

This information supplied herein is from sources we deem reliable. It is provided without any representation, warranty, or guarantee, expressed or implied as to its accuracy. Prospective Buyer or Tenant should conduct an independent investigation and verification of all matters deemed to be material, including, but not limited to, statements of income and expenses. Consult your attorney, accountant, or other professional advisor.

LEE & ASSOCIATES
COMMERCIAL REAL ESTATE SERVICES

km Kidder Mathews



WILL BALLOWE | Kidder Mathews | 925.389.2499 | will.ballowe@kidder.com | LIC N° 02053125

BLAKE DICUS | Lee & Associates | 925.737.4144 | bdicus@lee-associates.com | LIC N° 02074870

KIDDER.COM

This information supplied herein is from sources we deem reliable. It is provided without any representation, warranty, or guarantee, expressed or implied as to its accuracy. Prospective Buyer or Tenant should conduct an independent investigation and verification of all matters deemed to be material, including, but not limited to, statements of income and expenses. Consult your attorney, accountant, or other professional advisor.

