

610 Parkway Drive West Branch, MI

Building Sale Opportunity

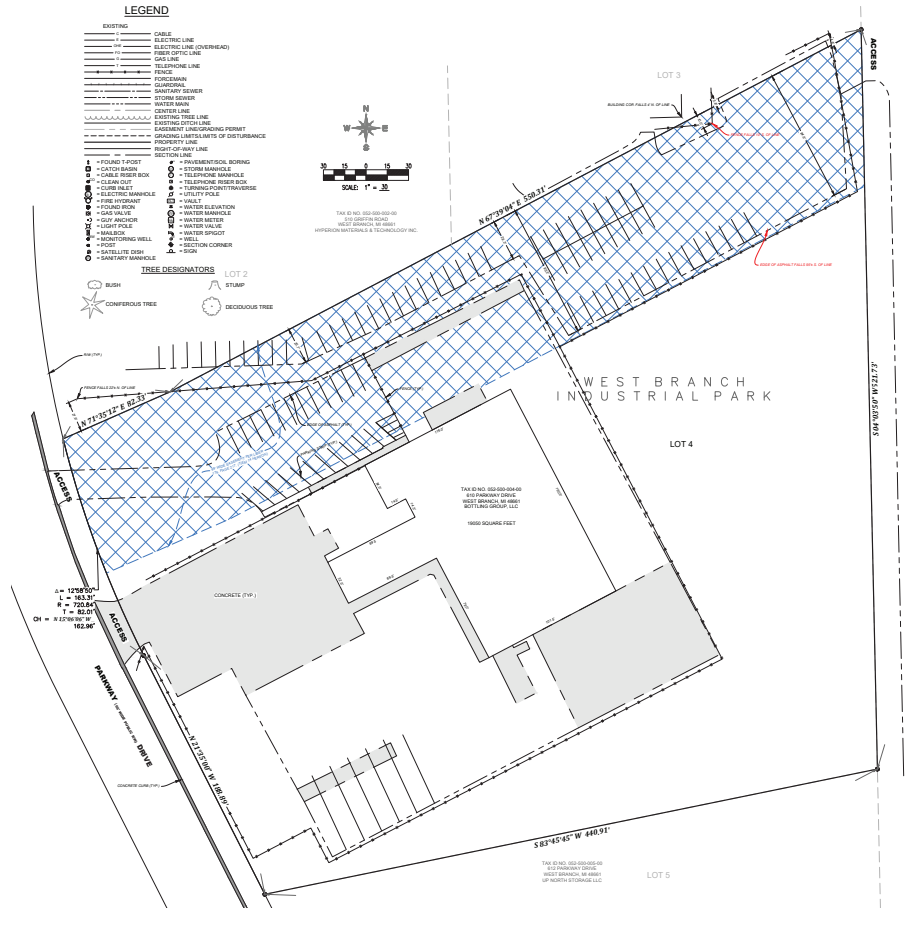


19,050 SF | Clearspan Warehouse

610 Parkway Drive West Branch, MI

19,050 SF CLEARSPAN WAREHOUSE

ALTA/NSPS LAND TITLE SURVEY IN SECTION 30, TOWN 22 NORTH,
RANGE 2 EAST, CITY OF WEST BRANCH, OGEWAM COUNTY, MICHIGAN.



PROPERTY INFORMATION & BUILDING FEATURES

Building Type	Clearspan Warehouse
# Floors	1
Size	19,050 SF
Acres	5.16
Ceiling Height	Approx. 25'
Year Built	1980
Submarket	Michigan North Central

1.2
Miles to Downtown
West Branch, MI

1.3
Miles to
Interstate 75

For More Information, Contact:



Kyle McGuire
248.605.1726
kmcguire@cresa.com

Even though obtained from sources deemed reliable, no warranty or representation, express or implied, is made as to the accuracy of the information herein, and it is subject to errors, omissions, change of price, rental or other conditions, withdrawal without notice, and to any special listing conditions imposed by our principals.