

MULTI-USE SPACE FOR LEASE

Located Across From MacArthur Park

1,180 SF



712 S GRANDVIEW STREET, LOS ANGELES, CA 90057

PROPERTY HIGHLIGHTS

- Ground floor multi-use space for lease
- Ideal for creative use, office, studio, storage, etc.
- Includes a restroom
- Part of larger 15,000 SF 2-story building
- Shared gated parking plus street parking
- Located just south of 7th Street
- 2 blocks west of Langer's Delicatessen
- Close to DTLA, Echo Park and East Hollywood
- Lease: \$1,000 per month (\$0.85 per SF gross)
- Term negotiable

PROPERTY DETAILS

Available Area 1,180± SF
Zone LA C2
Year Built 1922
Construction Masonry
Restrooms 1
Parking Shared Gated Lot

For More Information, Please Contact

JEFFREY JANKAEW

562-980-2415

jjankaew@majorproperties.com

Lic. 02253639

RENE MEXIA

213-446-2286

rene@majorproperties.com

Lic. 01424387

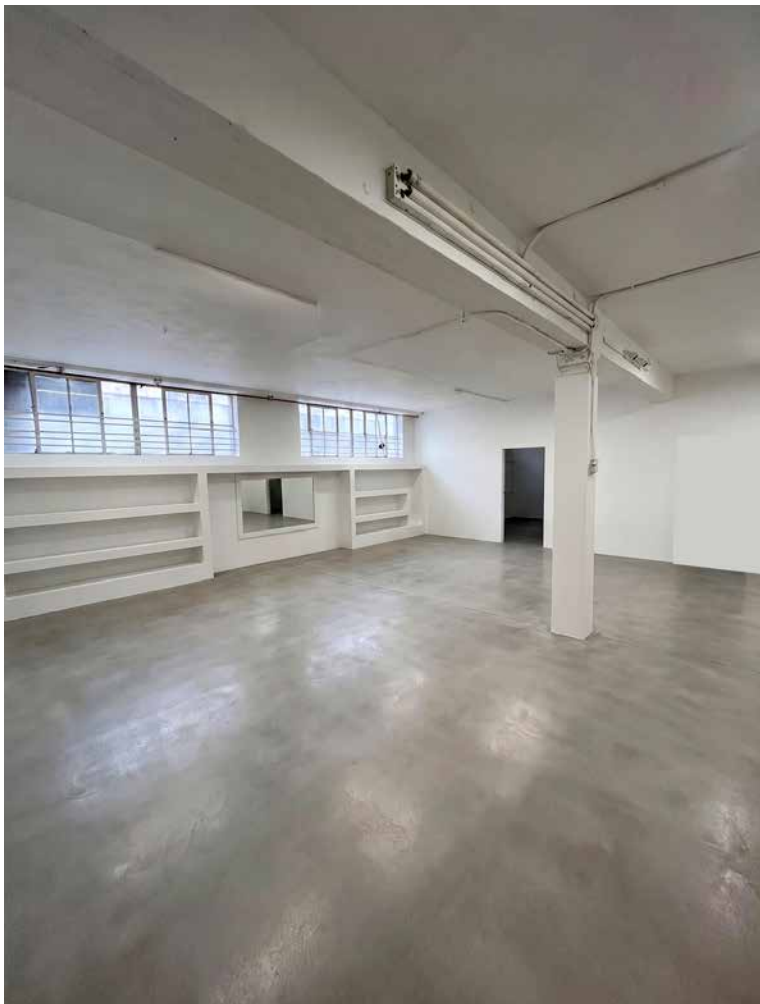
JEFF LUSTER

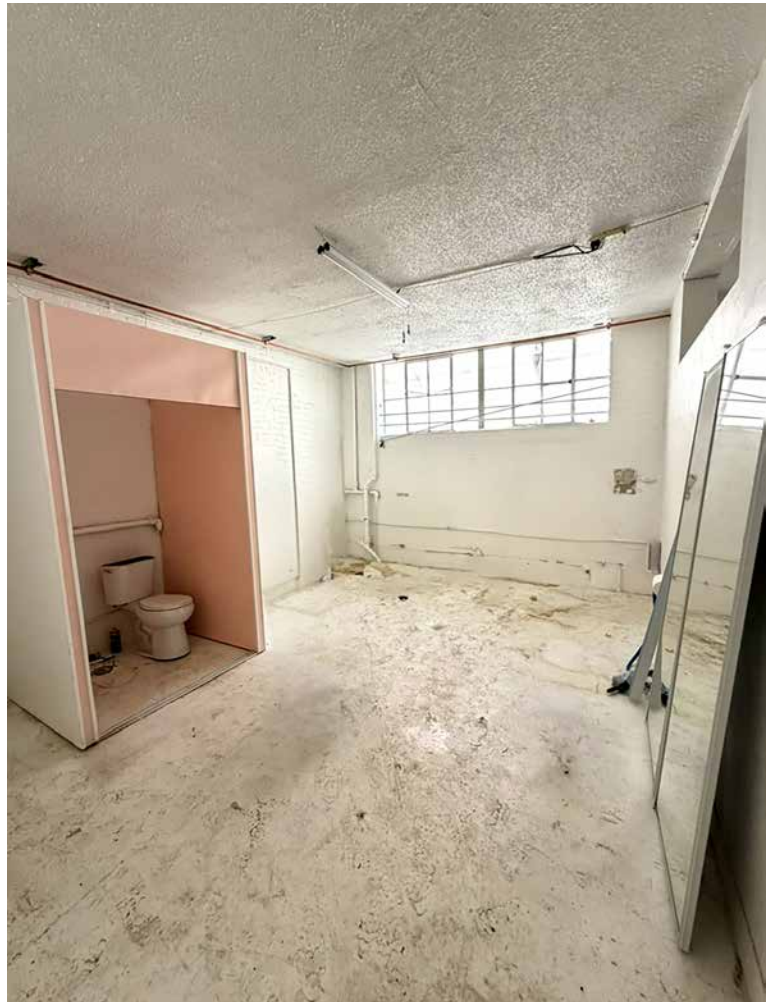
213-804-3013

jeff@majorproperties.com

Lic. 00636424

The information contained herein is furnished by sources we deem reliable, but for which we assume no liability. It is given in confidence and with the understanding that all negotiations pertaining to the property be handled through the listing office. All measurements are approximate.





MULTI-USE SPACE FOR LEASE

