

For Sale

CBRE

# Alabama Ave

St. Louis Park, MN

3990 Alabama Ave

3986 Alabama Ave

## Contact Us

**John Ryden**  
Senior Vice President  
+1 612 723 9313  
john.ryden@cbre.com

**Maxx Schindel**  
Associate  
+1 218 232 6901  
maxx.schindel@cbre.com



**3990 Alabama Ave**  
St. Louis Park, MN

**For Sale**

**\$190 PSF / \$480,000**

**Building SF** 2,528

**Office SF** 2,528

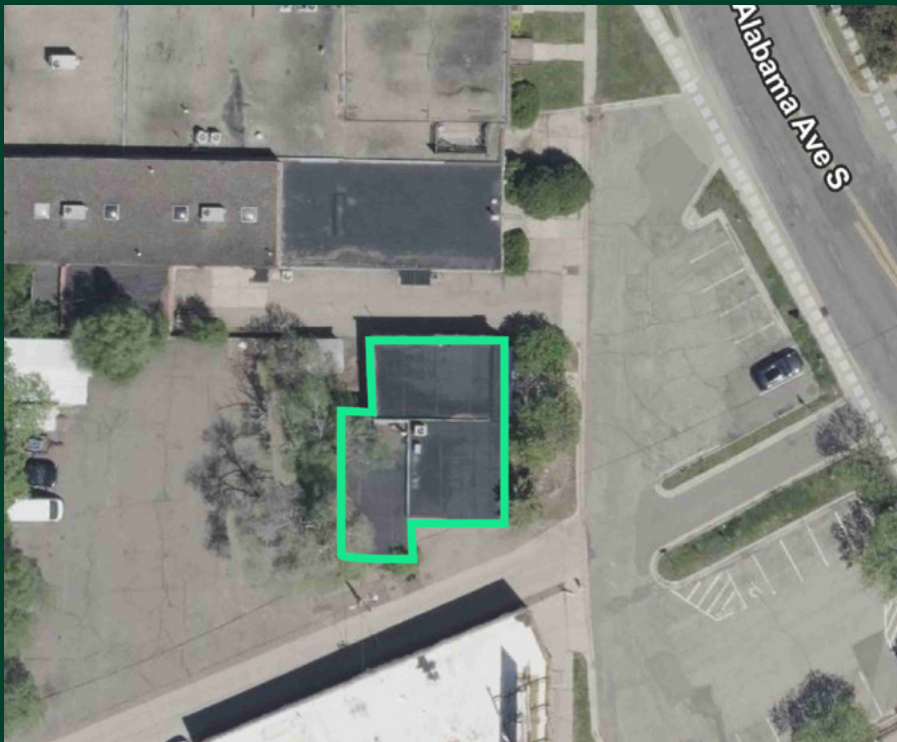
**Site SF** 5,030

**Clear Height** 10'

**Year Built** 1950

**Parking** 5 spaces

**1 Garage with double doors**



3986 Alabama Ave  
St. Louis Park, MN

For Sale

**\$170 PSF / \$850,000**

Building SF	4,988
Office SF	1,900
Site SF	8,481
Loading	2 drive-in doors
Clear Height	9'-18'
Year Built	1954
Parking	6 spaces

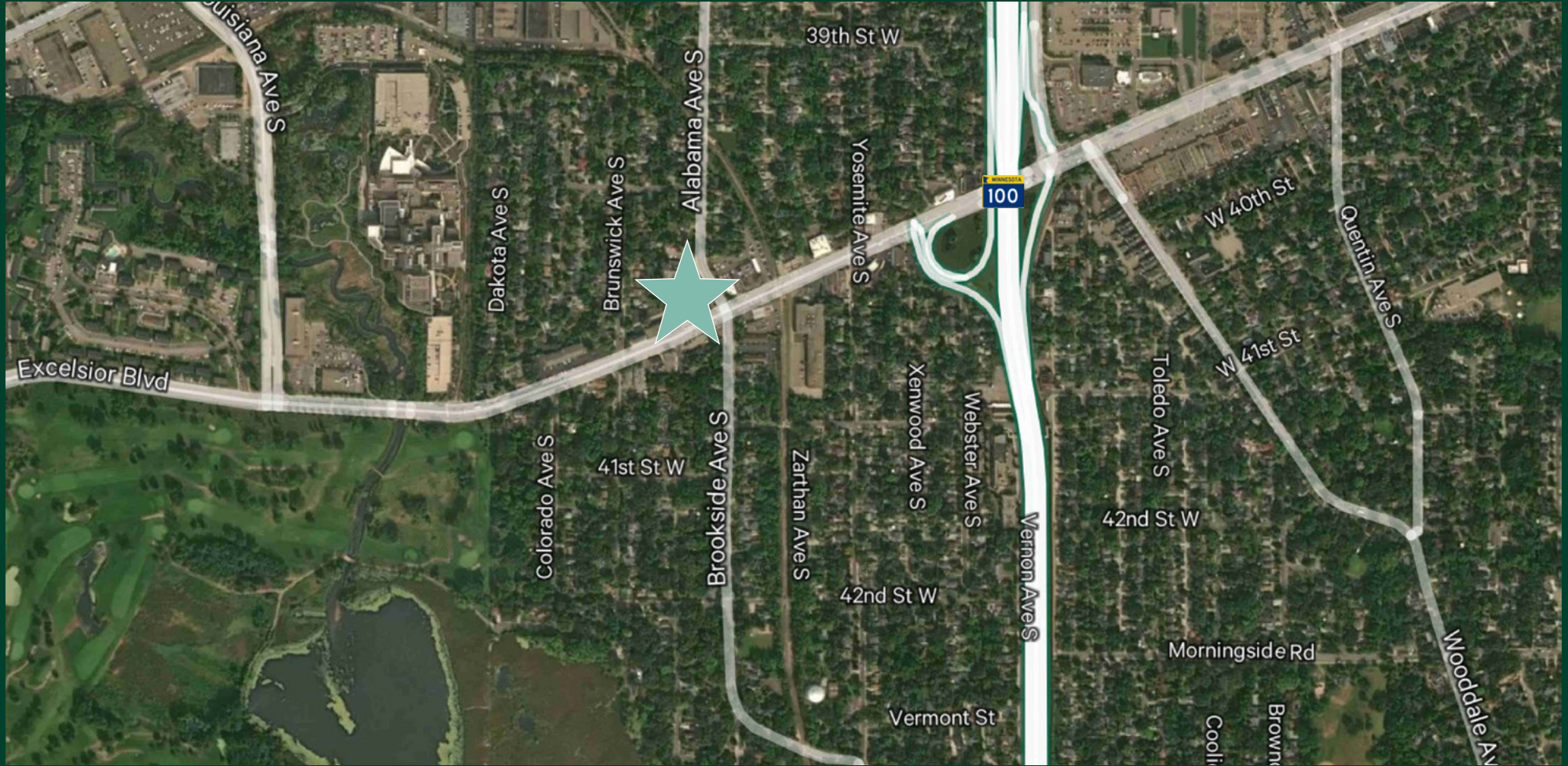




# Location Map

St. Louis Park, MN

For Sale



© 2025 CBRE, Inc. All rights reserved. This information has been obtained from sources believed reliable but has not been verified for accuracy or completeness. CBRE, Inc. makes no guarantee, representation or warranty and accepts no responsibility or liability as to the accuracy, completeness, or reliability of the information contained herein. You should conduct a careful, independent investigation of the property and verify all information. Any reliance on this information is solely at your own risk. CBRE and the CBRE logo are service marks of CBRE, Inc. All other marks displayed on this document are the property of their respective owners, and the use of such marks does not imply any affiliation with or endorsement of CBRE.