

890 SUPREME DRIVE

CHICAGO
O'HARE

890 Supreme Drive
Bensenville, IL 60106



FOR LEASE

±20,195 SF

UNIT 890



LEASED BY





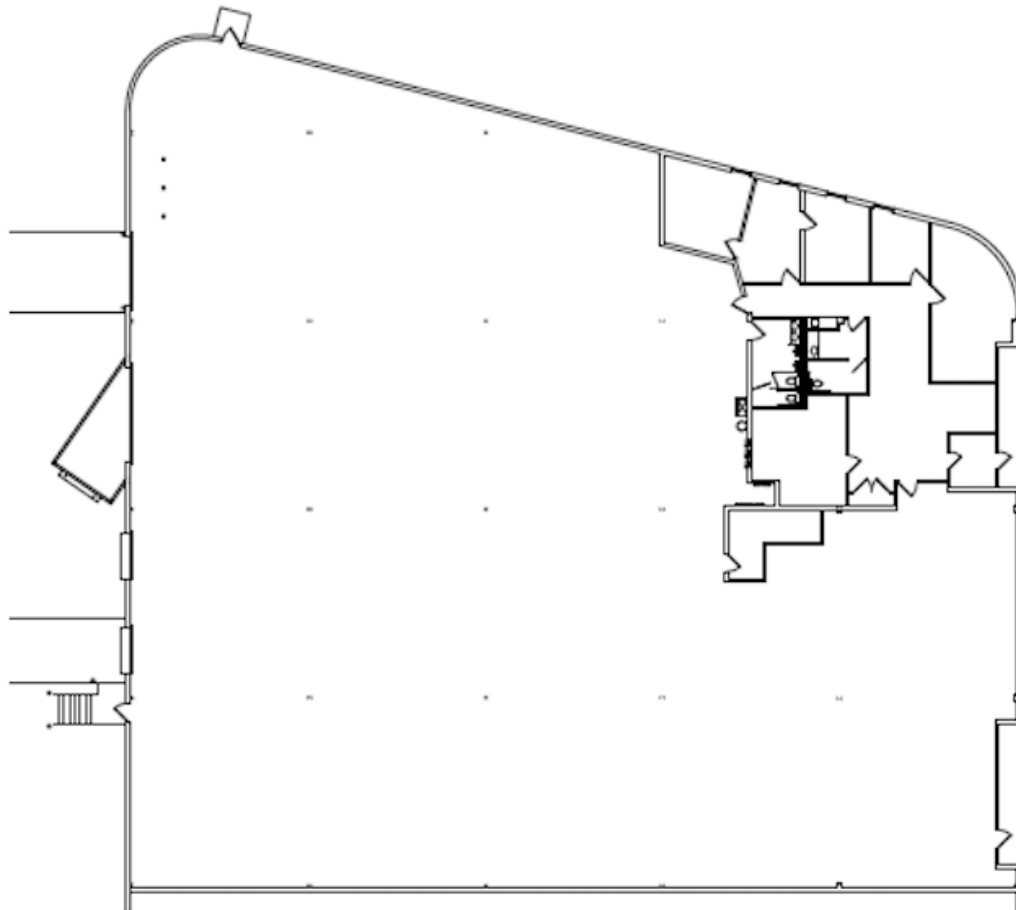
SPECIFICATIONS

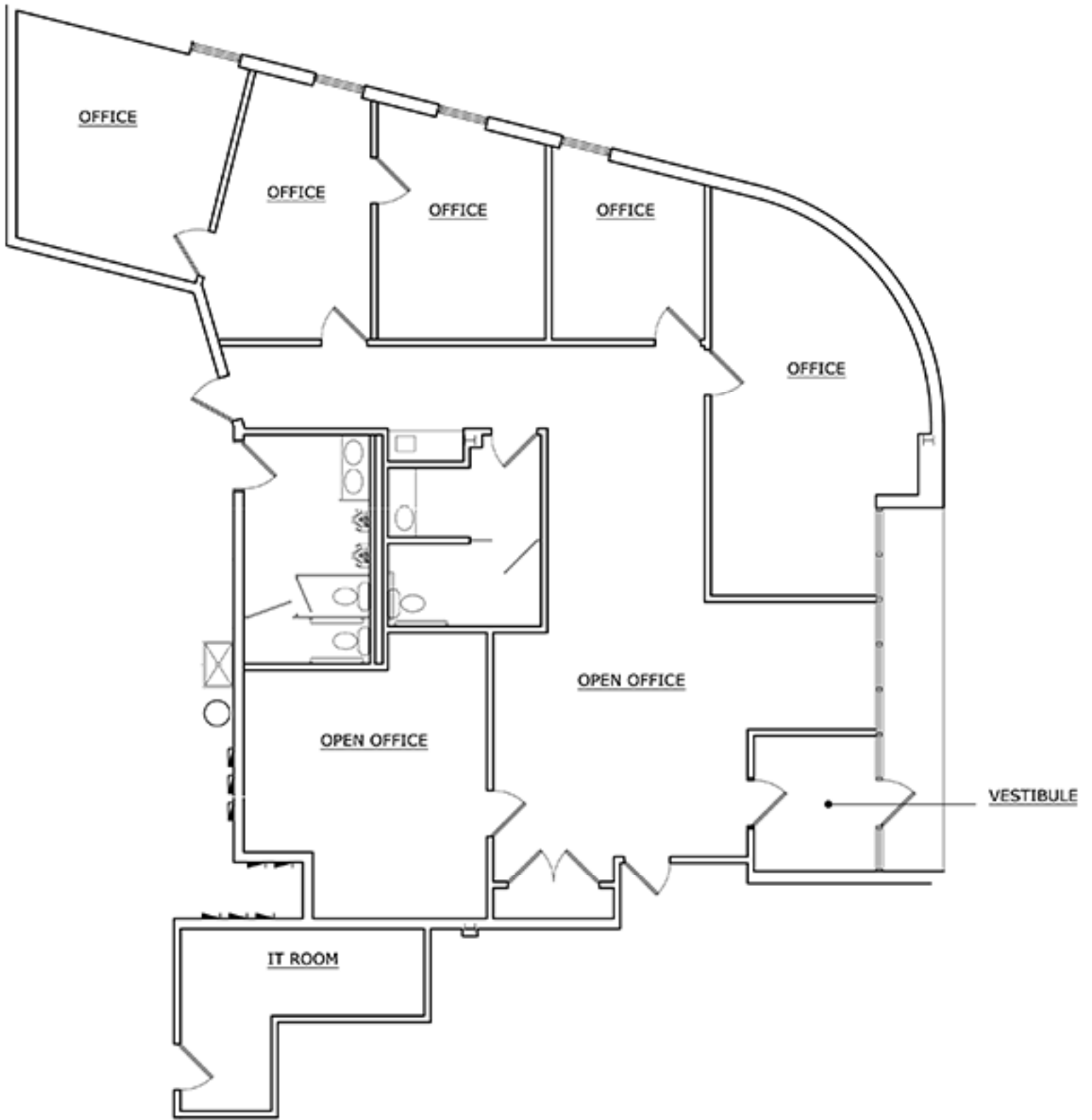
Available Size	20,195 SF
Office Size	2,600 SF
Building Size	85,552 SF
Ceiling Height	18' Clear
Loading	3 Exterior Docks, 1 Drive-In Door
Building Car Parking	94 Car Parking Stalls
Unit Car Parking	Pro Rata Share
Sprinklers	Wet System
Power	400 Amps @277/480v
Lease Rate	Subject to Offer

FOR LEASE

±20,195 SF

- Immediate access to I-390, Route 83 and I-90
- Located at the west entrance to O'Hare Airport
- Low Dupage County taxes





Committed to Driving Value for Our Customers

Properties with a Competitive Edge

Our scale, proprietary data and local relationships allow our 1,200+ skilled team members to help customers stay ahead of market trends.

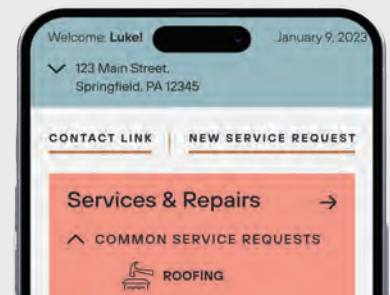


Best-in-Class Customer Service

Our on-the-ground regional teams provide you with local expertise, leveraging data-driven insights to find the right solutions for your business.

Link+

Our digital customer experience platform provides easy access to your property management teams, lease documents, billing and service requests. Sign up today!



500 Million Square Foot Portfolio

Energy Solutions

Our comprehensive energy and utility management program enables customers to achieve savings and access our in-house sustainability experts. Enroll through Link+.



CONTACT INFORMATION

890 Supreme Drive
Bensenville, IL 60106

Matthew Stauber, SIOR
matthew.stauber@colliers.com
(847) 698-8236

Thomas Rodeno
thomas.rodano@colliers.com
(847) 698-8231

Patrick Turner
patrick.turner@colliers.com
(847) 698-8277

This is not an offer or acceptance of an offer to lease space. A lease will only be offered or made in a written agreement signed by landlord. No representation or warranty of any kind is made by landlord unless set forth in a written definitive lease executed by the landlord.



LEASED BY

