

The Piazza

Beautiful and practical for business.



8050 - 8080 SANTA TERESA BOULEVARD • GILROY, CALIFORNIA 95020

The Piazza is a Class-A Business Complex, Centrally Located in Gilroy, CA and offers 52,000 Sq. Ft. of High-End Mixed Use Space.

- Gilroy's Most Prestigious Office Park
- Great West Side Location
- Fabulous Mediterranean Architecture
- Great Tenant Mix (Law, Real Estate, Insurance, etc.)
- Space Available: 684 to 2,961 SF
- Four Buildings with Dramatic Courtyard and Fountain

V
VANNI PROPERTIES INC.



For More Information, Contact Exclusive Agents:

Mark Sanchez

+1 408 313 8444
mark.sanchez@colliers.com
CA License No. 00883278

Matt van Keulen

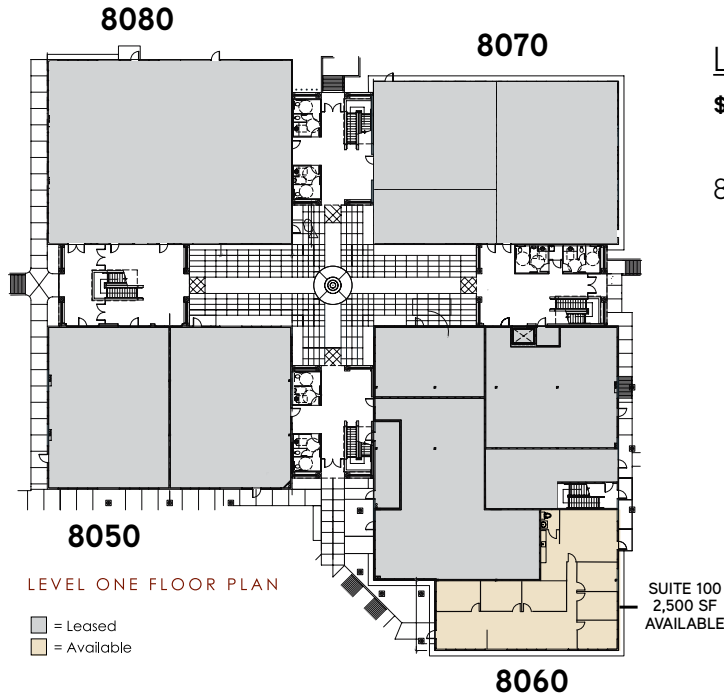
+1 408 930 9236
matt.vankeulen@colliers.com
CA License No. 01899003

8070 Santa Teresa Boulevard, Suite 220 • Gilroy, CA 95020 • +1 408 842 7000 Main • +1 408 842 1141 Fax

The Piazza

Beautiful and practical for business.

8050 - 8080 SANTA TERESA BOULEVARD • GILROY, CALIFORNIA 95020



Level One Availables

\$2.25 Per Sq. Ft./Month, NNN

8060 Santa Teresa Boulevard

- **Suite 100** - 2,500 Square Feet
- 6 Private Offices
- Large Work Room

Level Two Availables

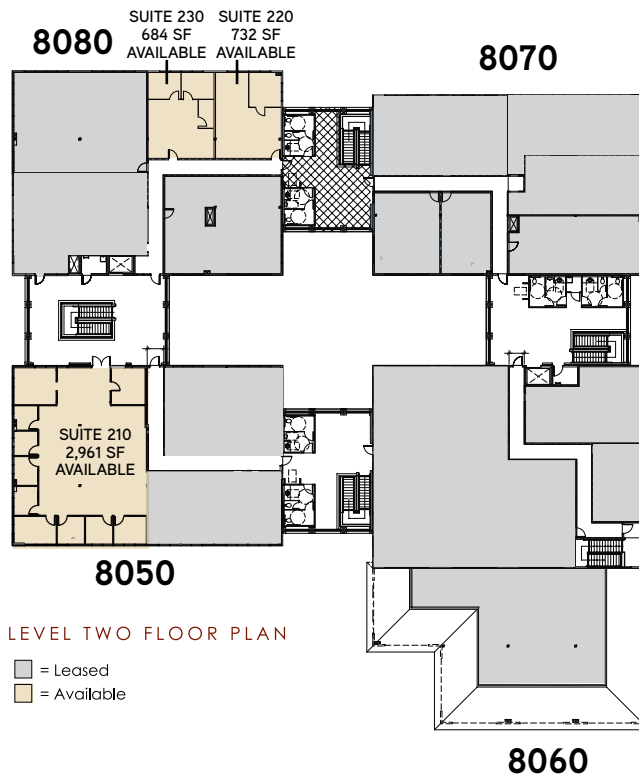
\$2.25 Per Sq. Ft./Month, NNN

8050 Santa Teresa Boulevard

- **Suite 210** - 2,961 Square Feet
- Open Work Area
- Perimeter Office

8080 Santa Teresa Boulevard

- **Suite 220** - 732 Square Feet
- One Private Office
- **Suite 230** - 684 Square Feet
- Two Private Offices
- One Storage Room



* All Sizes Include Approximately 10.9% Load Factor

Drawings Not Exact/Not to Scale

The information furnished has been obtained from sources we deem reliable and is submitted subject to errors, omissions and changes. Although Colliers International has no reason to doubt its accuracy, we do not guarantee it. All information should be verified by the recipient prior to lease, purchase, exchange, or execution of legal documents. © 2025 Colliers International