

5,677 - 71,506 SF FOR LEASE

5400 PORT ROYAL RD.

SPRINGFIELD, VA 22151



Clear Height: 13' 6"
Loading: Docks and Drive-ins
Parking: Abundant

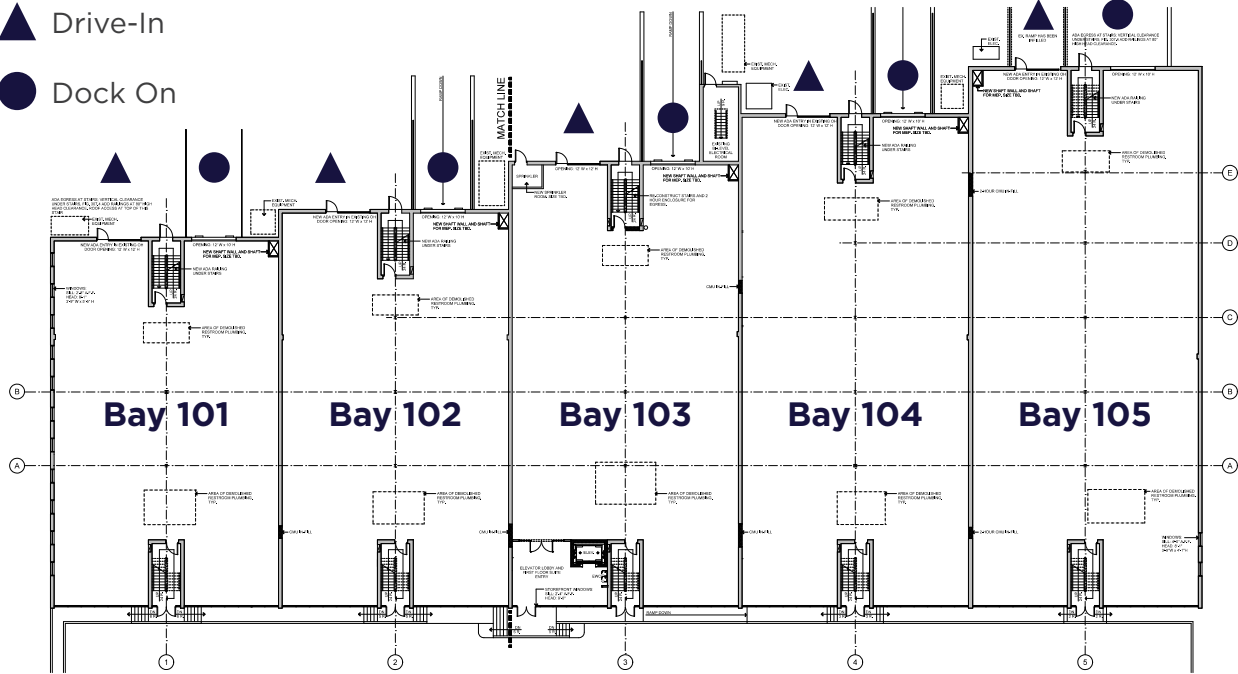


**CUSHMAN &
WAKEFIELD**

1ST FLOOR

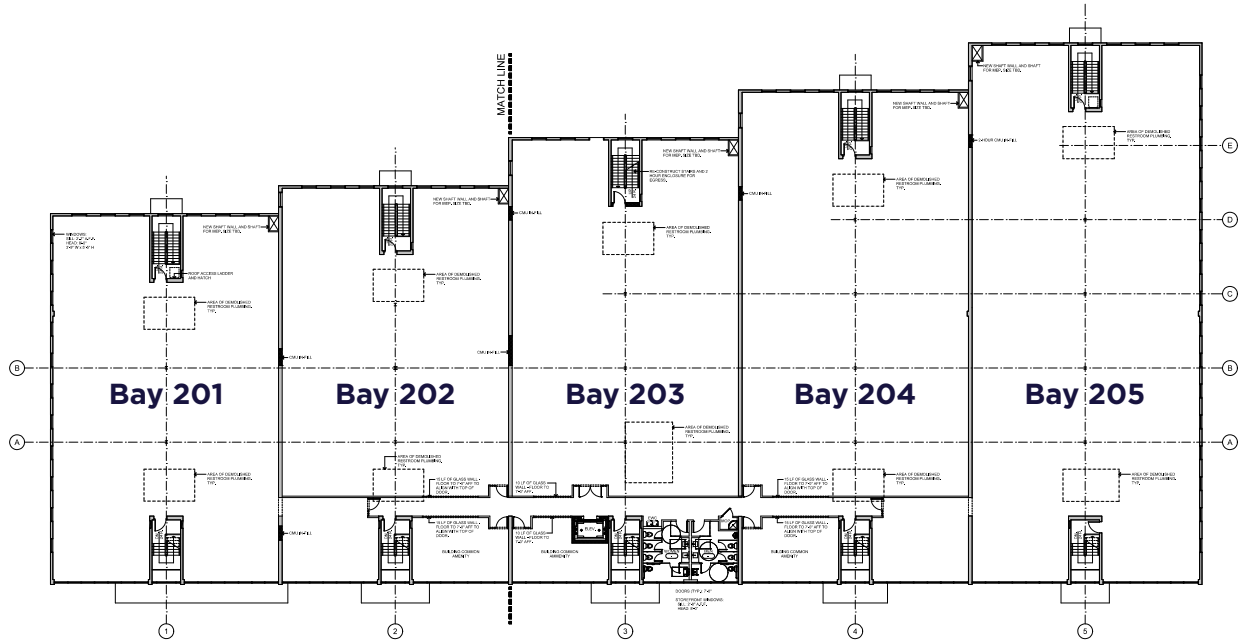
- Bay 101 - 5,752 SF
- Bay 102 - 6,317 SF
- Bay 103 - 6,568 SF
- Bay 104 - 7,961 SF
- Bay 105 - 8,874 SF

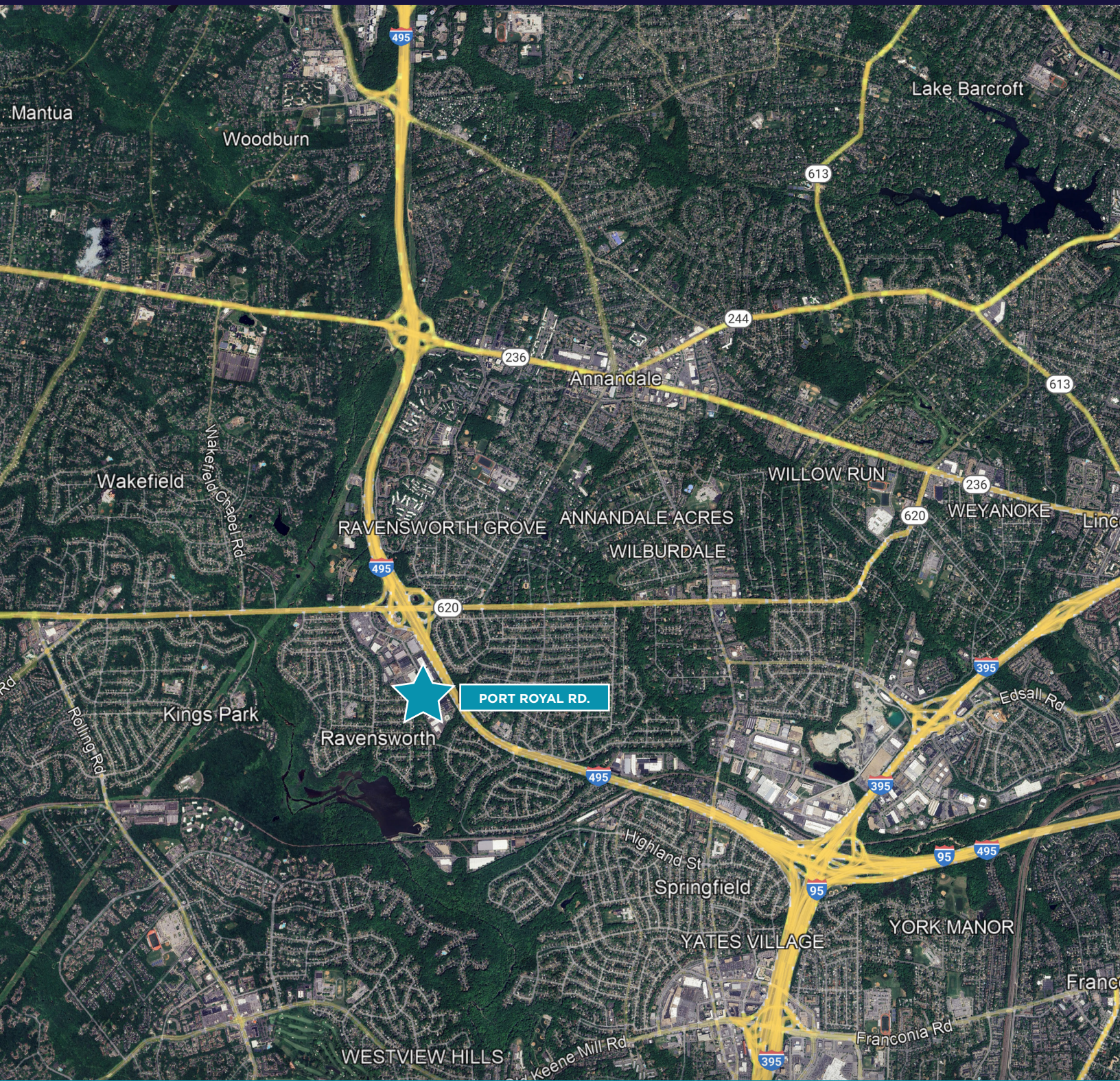
- ▲ Drive-In
- Dock On



2ND FLOOR

- Bay 201 - 6,572 SF
- Bay 202 - 5,271 SF
- Bay 203 - 6,135 SF
- Bay 204 - 7,017 SF
- Bay 205 - 9,714 SF





For more information, please contact:

Jon Lawrence
+1 703 847 2787
jon.lawrence@cushwake.com

Ed Zaptin
+1 703 847 2730
ed.zaptin@cushwake.com

Shane Keeton
+1 703 847 2784
shane.keeton@cushwake.com

©2026 Cushman & Wakefield. All rights reserved. The information contained in this communication is strictly confidential. This information has been obtained from sources believed to be reliable but has not been verified. NO WARRANTY OR REPRESENTATION, EXPRESS OR IMPLIED, IS MADE AS TO THE CONDITION OF THE PROPERTY (OR PROPERTIES) REFERENCED HEREIN OR AS TO THE ACCURACY OR COMPLETENESS OF THE INFORMATION CONTAINED HEREIN, AND SAME IS SUBMITTED SUBJECT TO ERRORS, OMISSIONS, CHANGE OF PRICE, RENTAL OR OTHER CONDITIONS, WITHDRAWAL WITHOUT NOTICE, AND TO ANY SPECIAL LISTING CONDITIONS IMPOSED BY THE PROPERTY OWNER(S). ANY PROJECTIONS, OPINIONS OR ESTIMATES ARE SUBJECT TO UNCERTAINTY AND DO NOT SIGNIFY CURRENT OR FUTURE PROPERTY PERFORMANCE. PD-214065-V2



CUSHMAN & WAKEFIELD