



Mt. Pleasant Commerce Center

13200–13207 Globe Drive
Mt. Pleasant, WI 53177



About the Property

Mt. Pleasant Commerce Center is an 18-acre mixed-use business community located near the intersection of WI 20 (Washington Avenue) and Interstate 94/41 in Mt. Pleasant, Wisconsin. The business community is comprised of five buildings, totaling more than 211,800 square feet of office and flex/R&D space.



Flex/R&D Buildings

13203 Globe Drive	39,400 SF
13205 Globe Drive	39,400 SF
13207 Globe Drive	32,156 SF

Building Specifications

Ceiling Height	16 ft. clear minimum
Parking	2.3 spaces/1,000 SF
Construction	Masonry
Loading	Dock or drive-in
Zoning	C-4

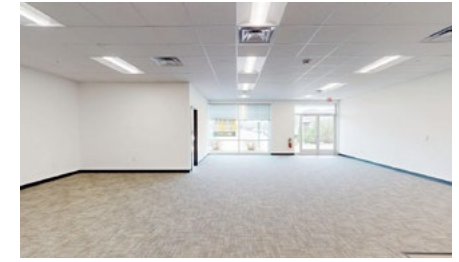
Office Buildings

13200 Globe Drive 200	46,545 SF
13200 Globe Drive 100	54,329 SF

Building Specifications

Ceiling Height	12 ft. clear minimum
Parking	4.5 spaces/1,000 SF
Heat	Natural Gas
Roof	EPDM rubber
Construction	Masonry
Zoning	C-3

For more information on Mt. Pleasant Commerce Center, visit: sjpi.com/mtpleasantcommerce

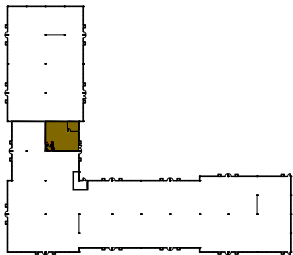


Total SF Available:
1,413 SF

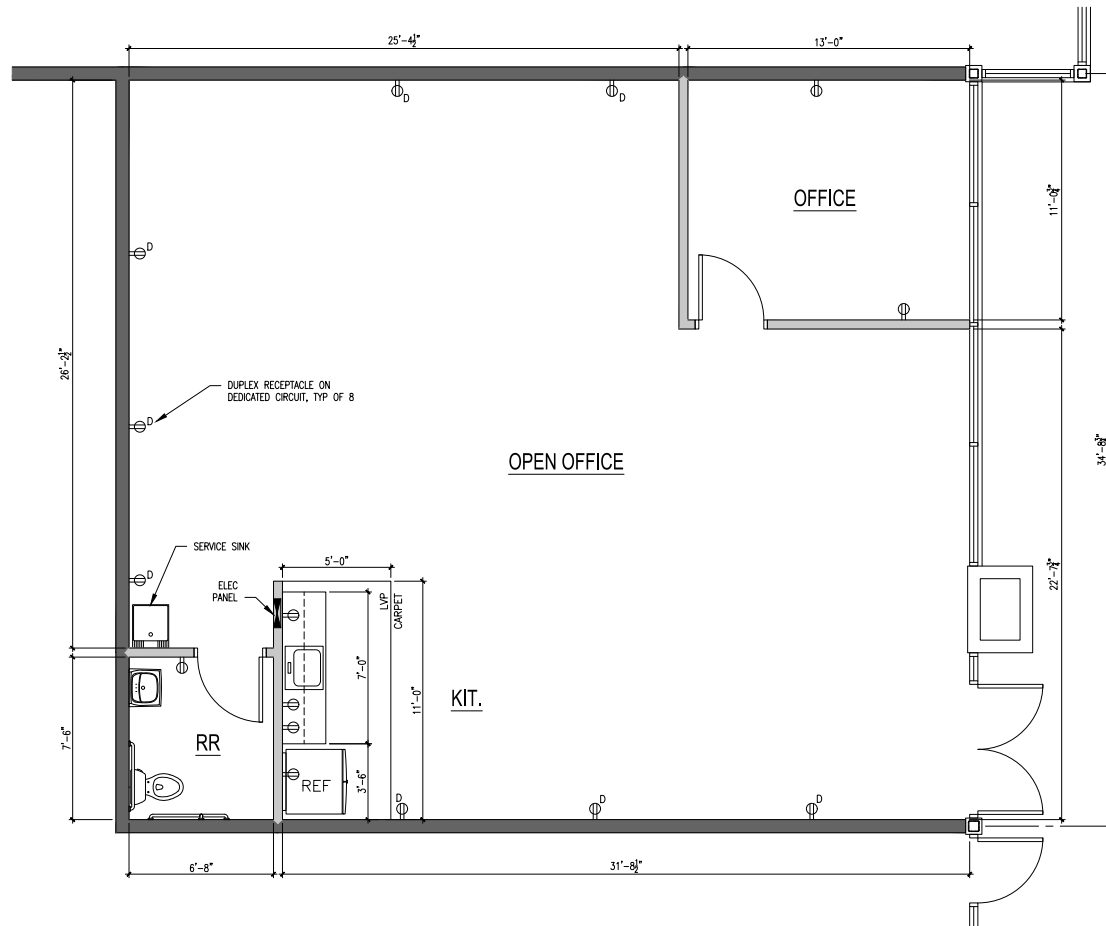
Open office space with a private office (1) and kitchenette

**CLICK TO VIEW
VIRTUAL TOUR**

KEY PLAN
NOT TO SCALE



Note: This space plan is subject to existing field conditions. This drawing is proprietary and the exclusive property of St. John Properties, Inc. Any duplications, distribution, or other unauthorized use is strictly prohibited.



Availabilities

Flex/Office Space at Mt. Pleasant Commerce Center

2,244–19,216 sq. ft.	13207 Globe Drive	Ste. 305-312	First generation Flex/R&D building, drive-in doors, shared ramp for dock loading
1,413 sq. ft.	13200 Globe Drive 200	Ste. 226	Open office space with a private office (1) and kitchenette
2,844 sq. ft.	13203 Globe Drive	Ste. 106	1,422 sq. ft. of office-showroom, 1,422 sq. ft. of warehouse with a 10'x12' drive-in door (1)
2,984 sq. ft.	13207 Globe Drive	Ste. 301	First generation Flex/R&D building, drive-in doors, shared ramp for dock loading
3,028 sq. ft.	13205 Globe Drive	Ste. 209	Air conditioned warehouse space with 8'x10' loading door (1)
3,050 sq. ft.	13200 Globe Drive 200	Ste. 204 & 227	Private offices (5), conference room (1), training room (1), and open office area
4,463 sq. ft.	13200 Globe Drive 200	Ste. 204 & 226-227	Private offices (6), conference room, showroom, lobby, and open office area
4,564 sq. ft.	13200 Globe Drive 100	Ste. 110 & 129–130	New single-story office building, build to suit; excellent visibility from Highway 20

Contact Us

Gregory Fax

Regional Partner, Wisconsin

GFax@sjpi.com | 262.524.0100

Wisconsin Regional Office:

2000 Pewaukee Road | Suite A

Waukesha, WI 53188



262.524.0100 | SJPI.COM/WISCONSIN

This information contained in this publication has been obtained from sources believed to be reliable. St. John Properties makes no guarantee, warranty or representation about this information. Any projections, opinions, assumptions or estimates used here are for example only and do not represent the current or future performance of the property. Interested parties should conduct an independent investigation to determine whether the property suits their needs. REV 06/26