

# COMMERCIAL PRODUCTION KITCHEN IN THE HOLLYWOOD DISTRICT

K2 Building 1717 NE 42nd Avenue, Portland OR 97212

## FOR LEASE



The K2 Building's commercial production kitchen has a 22-ft hood, in-line max-capacity dishwasher, prep line and multiple prep- and wash sinks. Also included is a large walk-in cooler and a full Health-Dept-approved facility for food production. Easy access from the building, lobby, and a side entry door from the street makes this kitchen an ideal set-up for your catering or food production business. K2 is located right in the heart of Portland's vibrant Hollywood District and features high-efficiency heating/cooling, ADA accessibility, on-site parking, building security and access system, and optional office and storage space.

**Matt Schweitzer**  
[matt@northrimpx.com](mailto:matt@northrimpx.com) | [503.525.1927](tel:503.525.1927)



[northrimpx.com](http://northrimpx.com)

819 SE Morrison Street, Ste 110, Portland OR 97214 | [503.525.1925](tel:503.525.1925)

Matthew Schweitzer | [matt@northrimpx.com](mailto:matt@northrimpx.com)

# FOR LEASE

## COMMERCIAL PRODUCTION KITCHEN IN THE HOLLYWOOD DISTRICT

K2 Building 1717 NE 42nd Avenue, Portland OR 97212

### Property Details

- 1,218 RSF equipped commercial kitchen
- Ideal for caterers, ghost/cloud kitchen use, and meal delivery services
- Locally owned and managed, and landlord maintains the kitchen equipment
- Optional office space and basement storage
- High efficiency heating and cooling systems
- Wireless internet available
- ADA accessible
- Private parking lot

### Location Details

- In the heart of the Hollywood district
- On the corner of NE Sandy and NE 42nd
- Easy access to I-84
- Right next to Hollywood Theatre
- One block to Whole Foods Market
- Near the Hollywood Transit Center
- Close to the Springwater Corridor Trail

### Demographics & Visibility

- Population: 26,685
- Average household income: \$132,000
- Median resident age: 42

### Daily Traffic Count

Total: 29,000



**Matt Schweitzer**

[matt@northrimpx.com](mailto:matt@northrimpx.com) | 503.525.1927



[northrimpx.com](http://northrimpx.com)

819 SE Morrison Street, Ste 110, Portland OR 97214 | [503.525.1925](tel:503.525.1925)

Matthew Schweitzer | [matt@northrimpx.com](mailto:matt@northrimpx.com)

## Kitchen Features\*

- Large walk-in cooler
- 22-foot hood with suppression system
- Range grill with 8 burners
- 2-burner flat grill
- Chef base cooler with drawers
- In-line max-capacity dishwasher with clean and dirty dish tables
- Prep line and multiple prep- and wash sinks



Virtual Tour

[tinyurl.com/K2Kitchen1000](https://tinyurl.com/K2Kitchen1000)



Outfitted by

**PITMAN**  
RESTAURANT  
EQUIPMENT

*\*Kitchen equipment is subject to change; photos are for illustrative purposes only*

### REPRESENTATIVE KITCHEN



## COMMERCIAL PRODUCTION KITCHEN IN THE HOLLYWOOD DISTRICT

K2 Building 1717 NE 42nd Avenue, Portland OR 97212

## FOR LEASE

**Matt Schweitzer**

[matt@northrimpx.com](mailto:matt@northrimpx.com) | [503.525.1927](tel:503.525.1927)



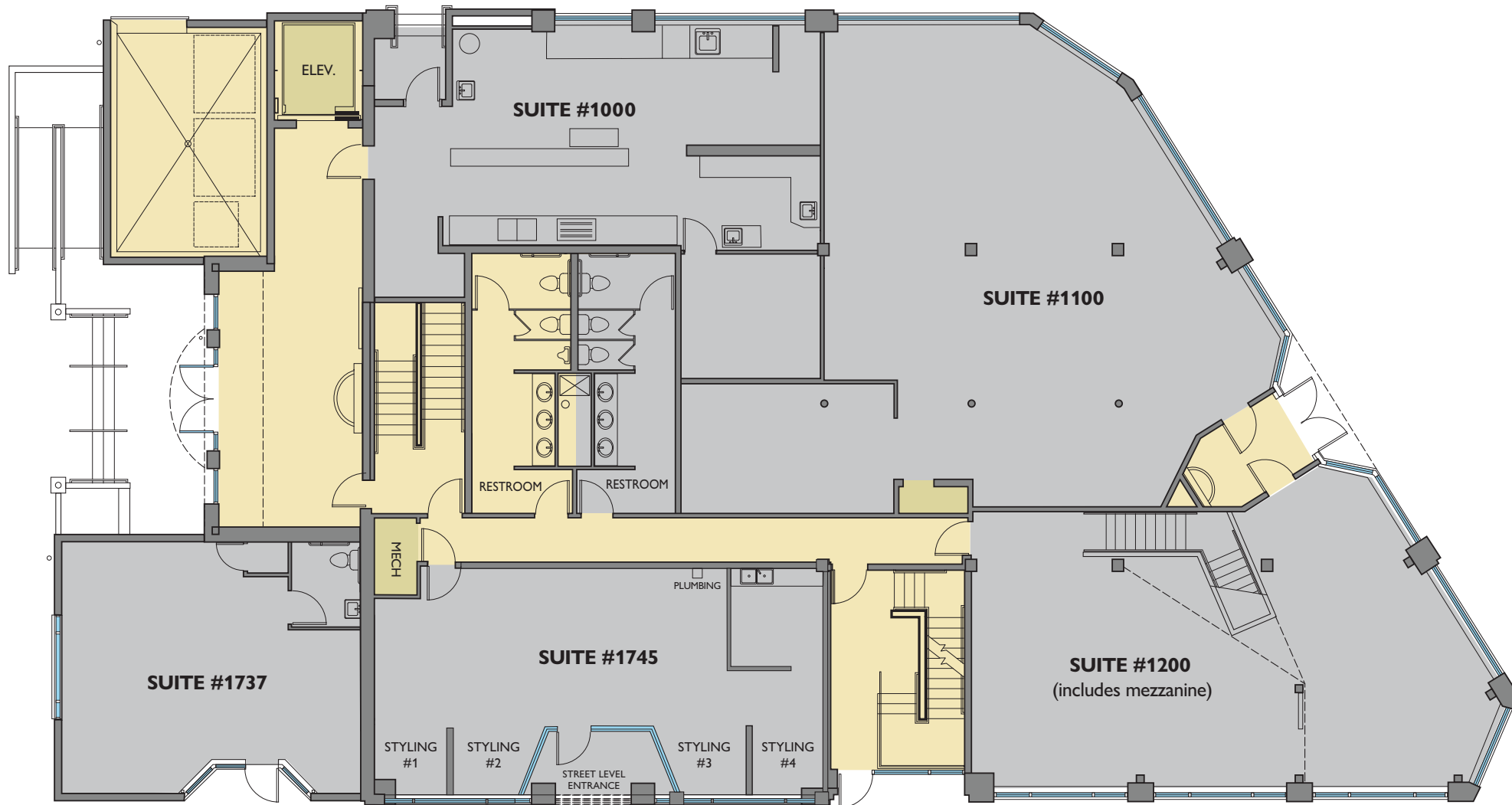
[northrimpx.com](https://northrimpx.com)

819 SE Morrison Street, Ste 110, Portland OR 97214 | [503.525.1925](tel:503.525.1925)

Matthew Schweitzer | [matt@northrimpx.com](mailto:matt@northrimpx.com)

# FLOOR PLAN

## 1st Floor



### COMMERCIAL PRODUCTION KITCHEN IN THE HOLLYWOOD DISTRICT

K2 Building 1717 NE 42nd Avenue, Portland OR 97212

### FOR LEASE

**Matt Schweitzer**

[matt@northrimpx.com](mailto:matt@northrimpx.com) | 503.525.1927



[northrimpx.com](http://northrimpx.com)

819 SE Morrison Street, Ste 110, Portland OR 97214 | [503.525.1925](tel:503.525.1925)

Matthew Schweitzer | [matt@northrimpx.com](mailto:matt@northrimpx.com)

# FLOOR PLAN

## Lower Level, Office, and Storage Space



### COMMERCIAL PRODUCTION KITCHEN IN THE HOLLYWOOD DISTRICT

K2 Building 1717 NE 42nd Avenue, Portland OR 97212

### FOR LEASE

**Matt Schweitzer**

[matt@northrimpx.com](mailto:matt@northrimpx.com) | 503.525.1927



[northrimpx.com](http://northrimpx.com)

819 SE Morrison Street, Ste 110, Portland OR 97214 | [503.525.1925](tel:503.525.1925)

Matthew Schweitzer | [matt@northrimpx.com](mailto:matt@northrimpx.com)



← DOWNTOWN PORTLAND

# COMMERCIAL PRODUCTION KITCHEN IN THE HOLLYWOOD DISTRICT

K2 Building 1717 NE 42nd Avenue, Portland OR 97212

# FOR LEASE

**Matt Schweitzer**  
[matt@northrimpx.com](mailto:matt@northrimpx.com) | 503.525.1927



[northrimpx.com](http://northrimpx.com)  
 819 SE Morrison Street, Ste 110, Portland OR 97214 | [503.525.1925](tel:503.525.1925)  
 Matthew Schweitzer | [matt@northrimpx.com](mailto:matt@northrimpx.com)