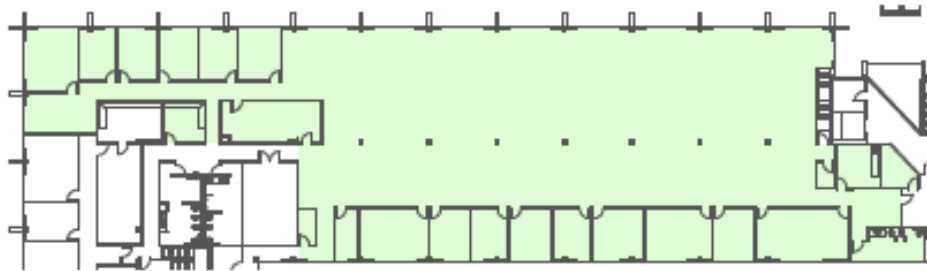
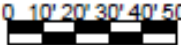


SECOND FLOOR  
SUITE 250



TENANT AREA	COMMON (16%)	RENTABLE AREA
14,074 SF	2,252 SF	16,326 SF

1" = 50' 



4021 AMBASSADOR CAFFERY PKWY  
LAFAYETTE, LA 70503

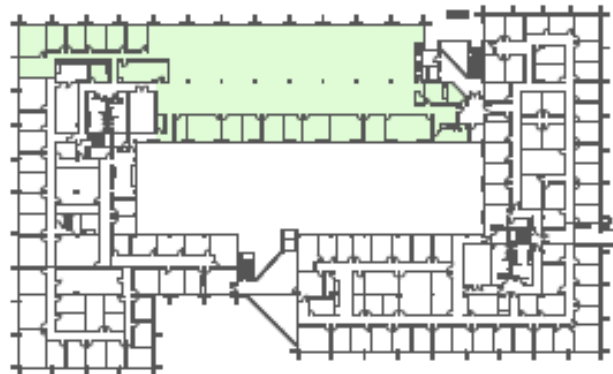
CONTACT:  
CHAMPION REAL ESTATE SERVICES  
100 RUE IBERVILLE, SUITE 200  
LAFAYETTE, LA 70508  
(337) 593-0444



**ZILER**  
ARCHITECTS

A PROFESSIONAL  
ARCHITECTURAL  
CORPORATION  
JAMES G. ZILER, ARCHITECT  
JAMES S. PRIBAZAL, ARCHITECT  
101 Calco Boulevard  
Lafayette, Louisiana 70503  
Ph: 337-289-6326

SECOND FLOOR



07/18/24