

# Vadnais Square

905 County Rd E | Vadnais Heights, MN



# Vadnais Square

905 County Rd E | Vadnais Heights, MN

## Property Features

- + Fresh Thyme anchored and Target shadow-anchored property
- + Strong national co-tenancy
- + Direct access and visibility from I-35E

## Available Space

- + 6,136 SF - Leased but Available

## GLA

- + 123,187 SF

## Traffic Counts

- + County Rd E: 20,731 VPD
- + I-35E: 80,880 VPD
- + Centerville Rd: 4,465 VPD
- + Arcade St: 4,050 VPD

## Demographics

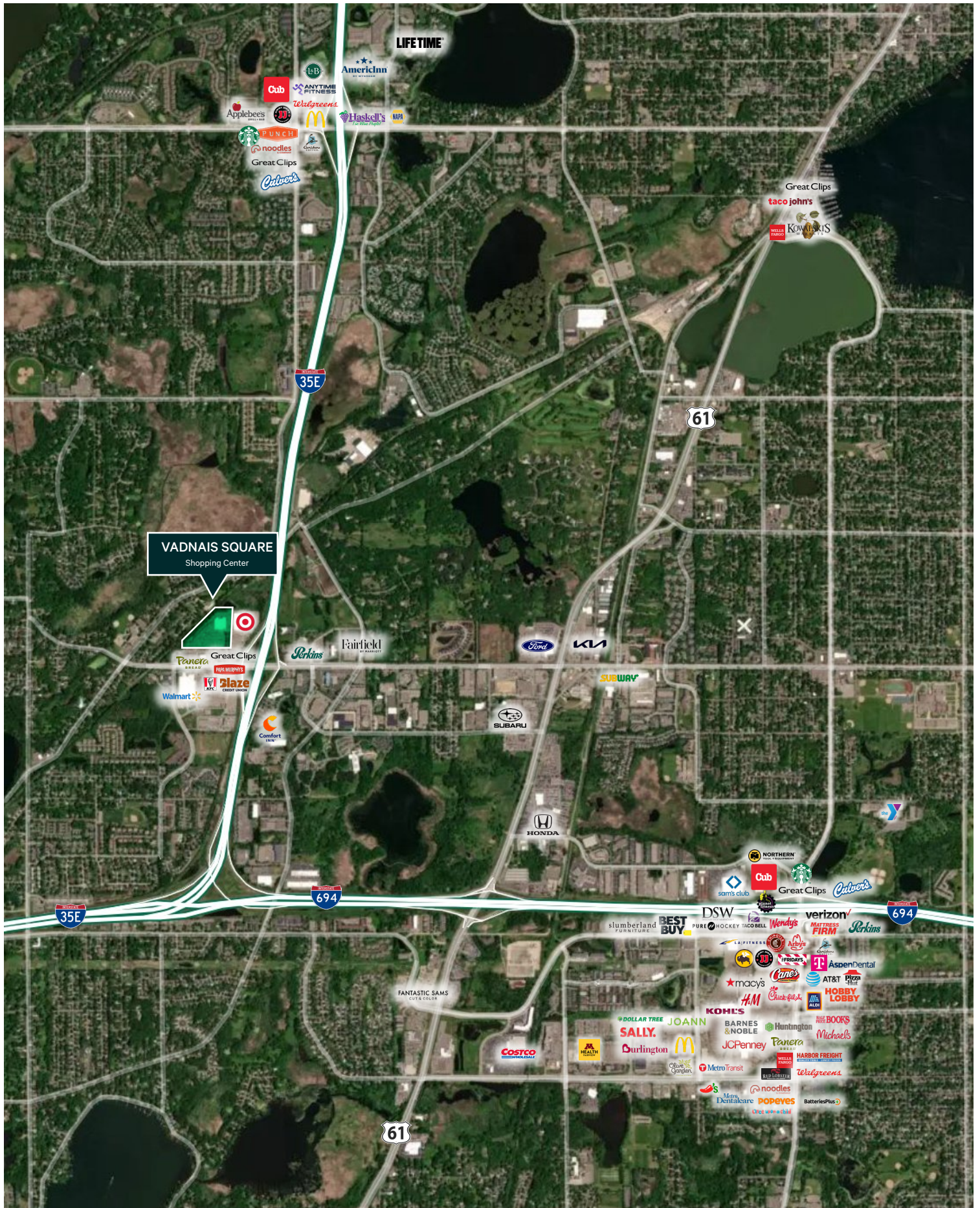
	1 Mile	3 Miles	5 Miles
Population	4,538	54,858	175,352
Daytime Population	7,264	66,877	172,300
Median Age	42.2	42.7	40.9
Households	1,910	22,977	68,362
Average Household Income	\$92,783	\$117,227	\$116,225

## Area Retailers



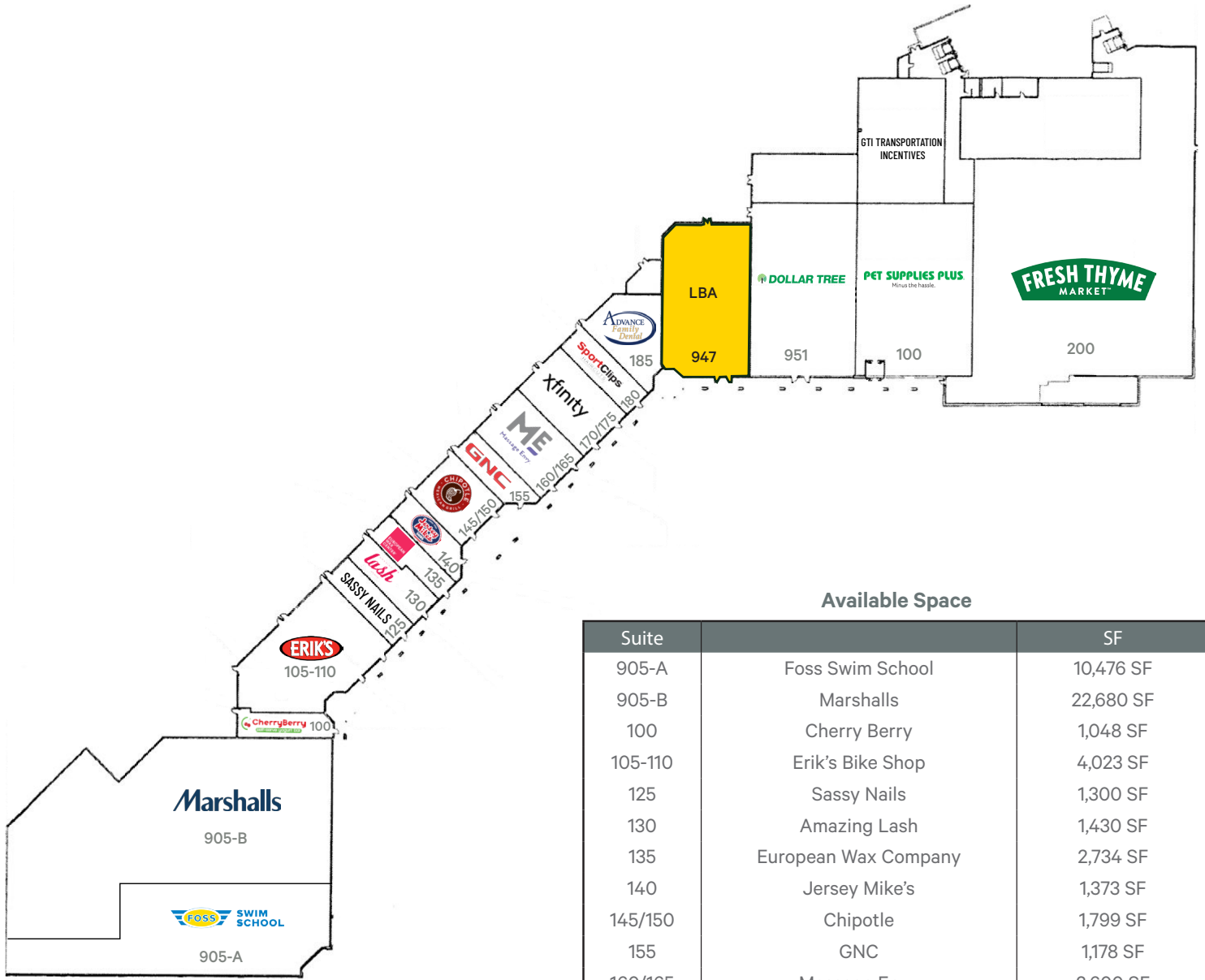
## Co-Tenants





# Vadnais Square

905 County Rd E | Vadnais Heights, MN



## Available Space

Suite		SF
905-A	Foss Swim School	10,476 SF
905-B	Marshalls	22,680 SF
100	Cherry Berry	1,048 SF
105-110	Erik's Bike Shop	4,023 SF
125	Sassy Nails	1,300 SF
130	Amazing Lash	1,430 SF
135	European Wax Company	2,734 SF
140	Jersey Mike's	1,373 SF
145/150	Chipotle	1,799 SF
155	GNC	1,178 SF
160/165	Massage Envy	2,600 SF
170/175	Xfinity	2,600 SF
180	Sports Clips	1,300 SF
185	Advance Family Dental	2,234 SF
947	LEASED BUT AVAILABLE	6,136 SF
951	Dollar Tree	8,082 SF
100	Pet Supplies Plus	9,005 SF
200	Fresh Thyme Farmers Market	28,354 SF
955-A	GTI Transportation Incentives	5,687 SF
955-B	Tenant B	7,838 SF



## Contact Us

### Rob Wise

Senior Vice President  
+1 612 336 4274  
rob.wise@cbre.com

### Charlie Hexum

First Vice President  
+1 612 336 4275  
charlie.hexum@cbre.com

© 2026 CBRE, Inc. All rights reserved. This information has been obtained from sources believed reliable, but has not been verified for accuracy or completeness. You should conduct a careful, independent investigation of the property and verify all information. Any reliance on this information is solely at your own risk. CBRE and the CBRE logo are service marks of CBRE, Inc. All other marks displayed on this document are the property of their respective owners, and the use of such logos does not imply any affiliation with or endorsement of CBRE. Photos herein are the property of their respective owners. Use of these images without the express written consent of the owner is prohibited.