

2001 CLUB MANOR DR.

MAUMELLE, AR 72113

SUITE E - 145 SF +/-
WINDOW OFFICE
\$700/MO

UTILITIES INCLUDED
MONTH-TO-MONTH LEASE.

WINDOW OFFICE EXECUTIVE SUITE FOR LEASE

ABUNDANT LOVE MINISTRY

P4

Realty Group

PROPERTY HIGHLIGHTS

- Dense retail corridor with anchor businesses nearby.
- Easy access to and from Maumelle Blvd.
- Located within walking distance of Lake Willastein Park and a mile from major restaurants, grocery and shopping destinations.
- Secure key-pad entry.
- Updated walkway security lighting.
- Janitorial services provided once per week for common areas and restrooms.

PRESENTED BY:

GEORGE PETROV,
PRINCIPAL BROKER

📞 501/224-9600

✉️ GEORGE@P4REALTYGROUP.COM



P4REALTYGROUP.COM



2001 CLUB MANOR DR.

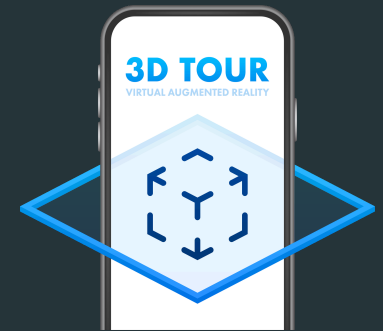
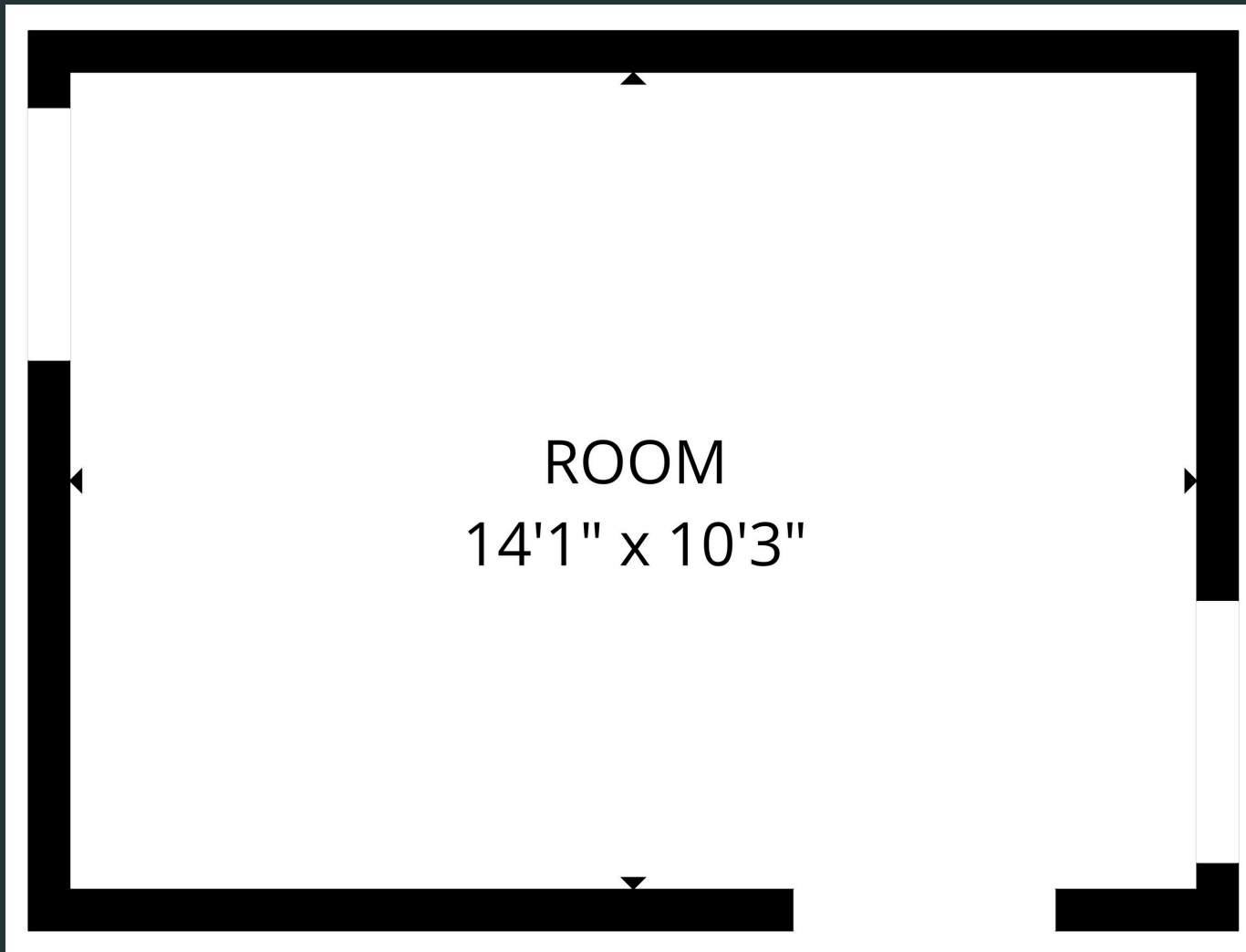
MAUMELLE, AR 72113

P4
Realty Group



FLOOR PLAN

SUITE E - 145 SF +/-



Please visit our website:
P4realtygroup.com
for a 3D virtual tour of the
Executive Suites at Riverstone
Plaza.

PRESENTED BY:
GEORGE PETROV,
PRINCIPAL BROKER
 501/224-9600

2001 CLUB MANOR DR.

MAUMELLE, AR 72113

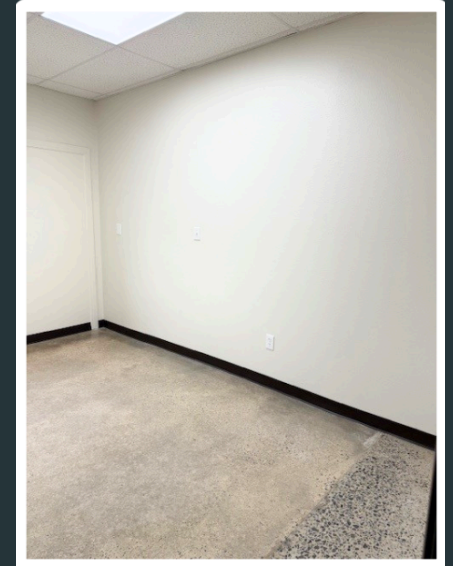
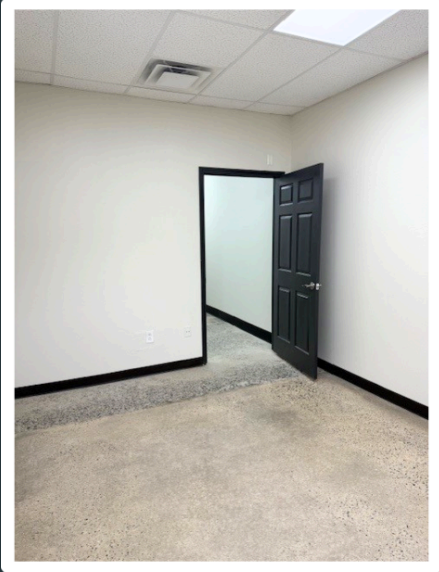
P4
Realty Group

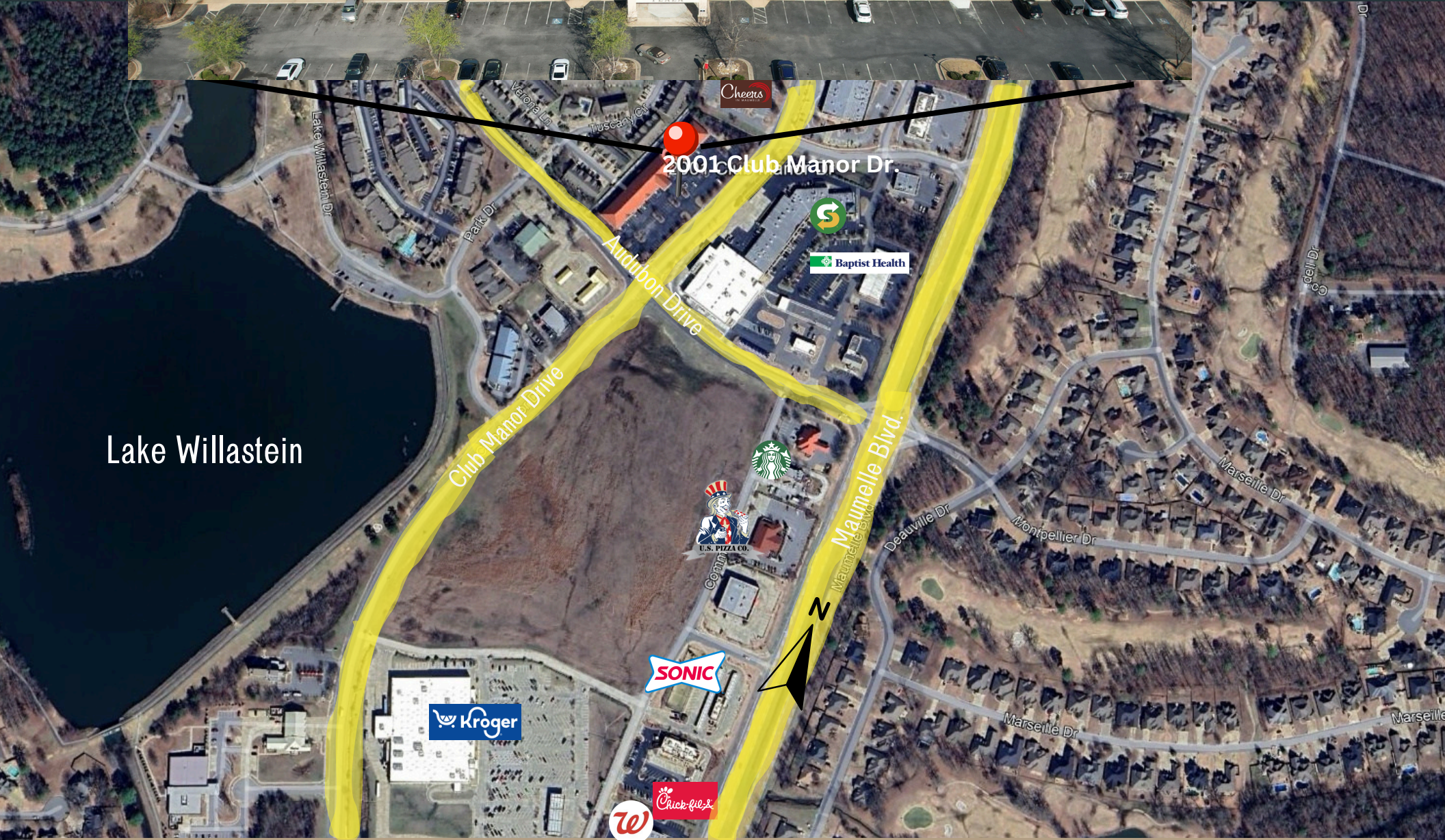
\$700/MONTH
UTILITIES INCLUDED,
MONTH-TO-MONTH
LEASE.



INTERIOR PHOTOS

SUITE E - 145 SF +/-





Lake Willastein

2001 Club Manor Dr.