

MIDTOWN SQUARE



MID-AMERICA®
Real Estate-Michigan, Inc.

FOR LEASE

1325-1345 Coolidge Highway / Troy, MI



RETAIL OPPORTUNITY

MIDTOWN SQUARE



Address

1325-1345 Coolidge Highway
Troy, MI 48084

Availability

Junior Box:

24,026 SF

Small Shop:

1,227 SF

1,444 SF

2,251 SF

Features

Midtown Square is a 77 acre mixed-use development, featuring 300 condominiums and a 600,000 SF power center in Troy, MI. It's located on the west side of Coolidge Highway between 14 & 15 Mile Roads, serving the communities of Birmingham, Berkley, Troy, Clawson and Royal Oak. Midtown Square is optimally situated 1 mile from the heart of downtown Birmingham, MI and boasts a strong national tenant line up. Retailers include Target, Home Depot, Kohl's, Kroger, Petco, Michael's, ULTA, and other national retailers. The property is also shadow anchored by Whole Foods and LA Fitness Club Studio. Midtown Square offers ample parking, multiple access points from both main roads, and two traffic controlled entrances. Target is the fourth most visited Target store in the state of Michigan out of 53, according to Placer AI.

Co-Tenants



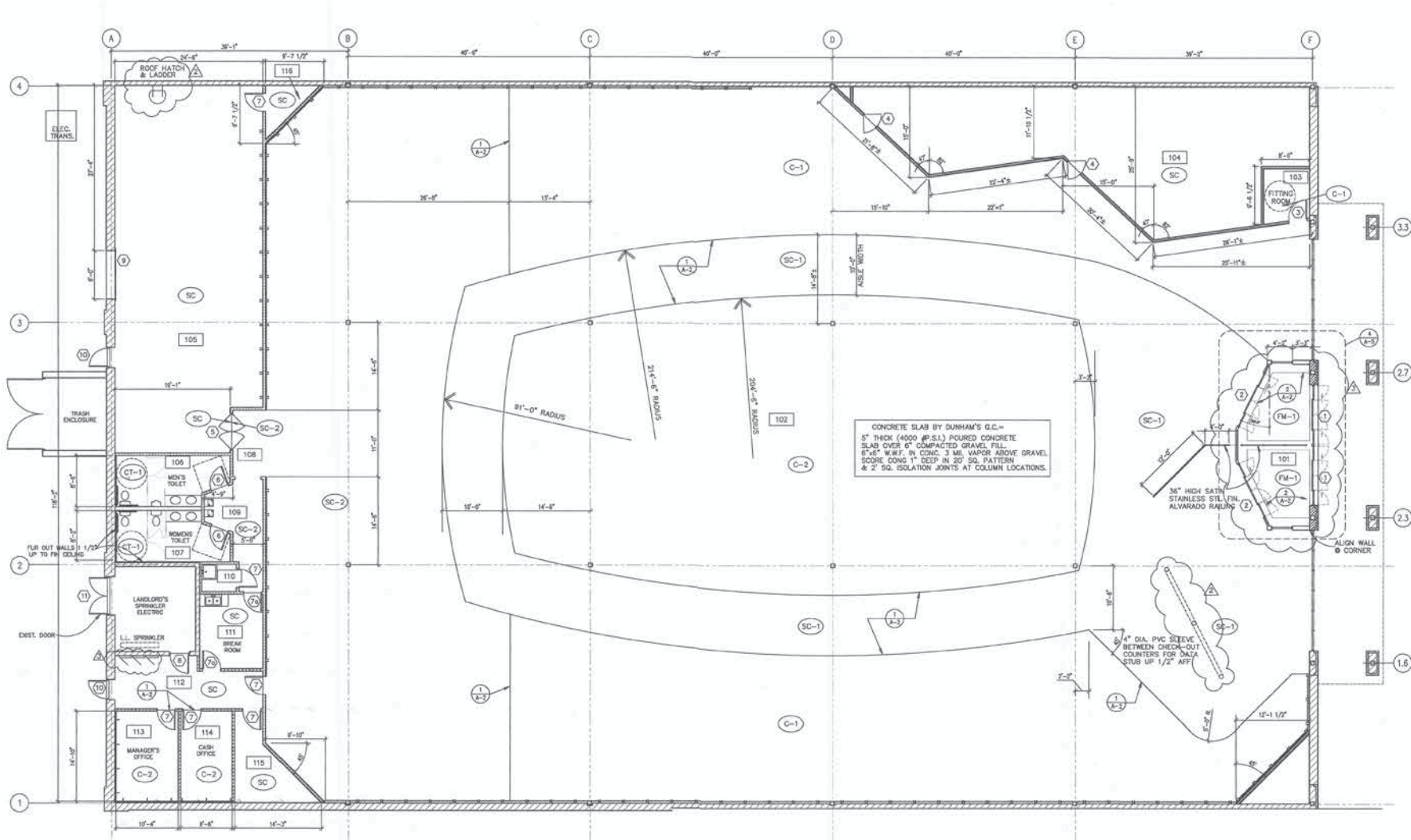
Demographics (2025)

	1 MILE	3 MILES	5 MILES
POPULATION	12,988	101,929	249,474
HOUSEHOLDS	6,460	47,201	110,722
AVG HOUSEHOLD INCOME	\$137,063	\$154,626	\$151,602
DAYTIME POPULATION	20,061	138,701	311,405

MIDTOWN SQUARE



MIDTOWN SQUARE



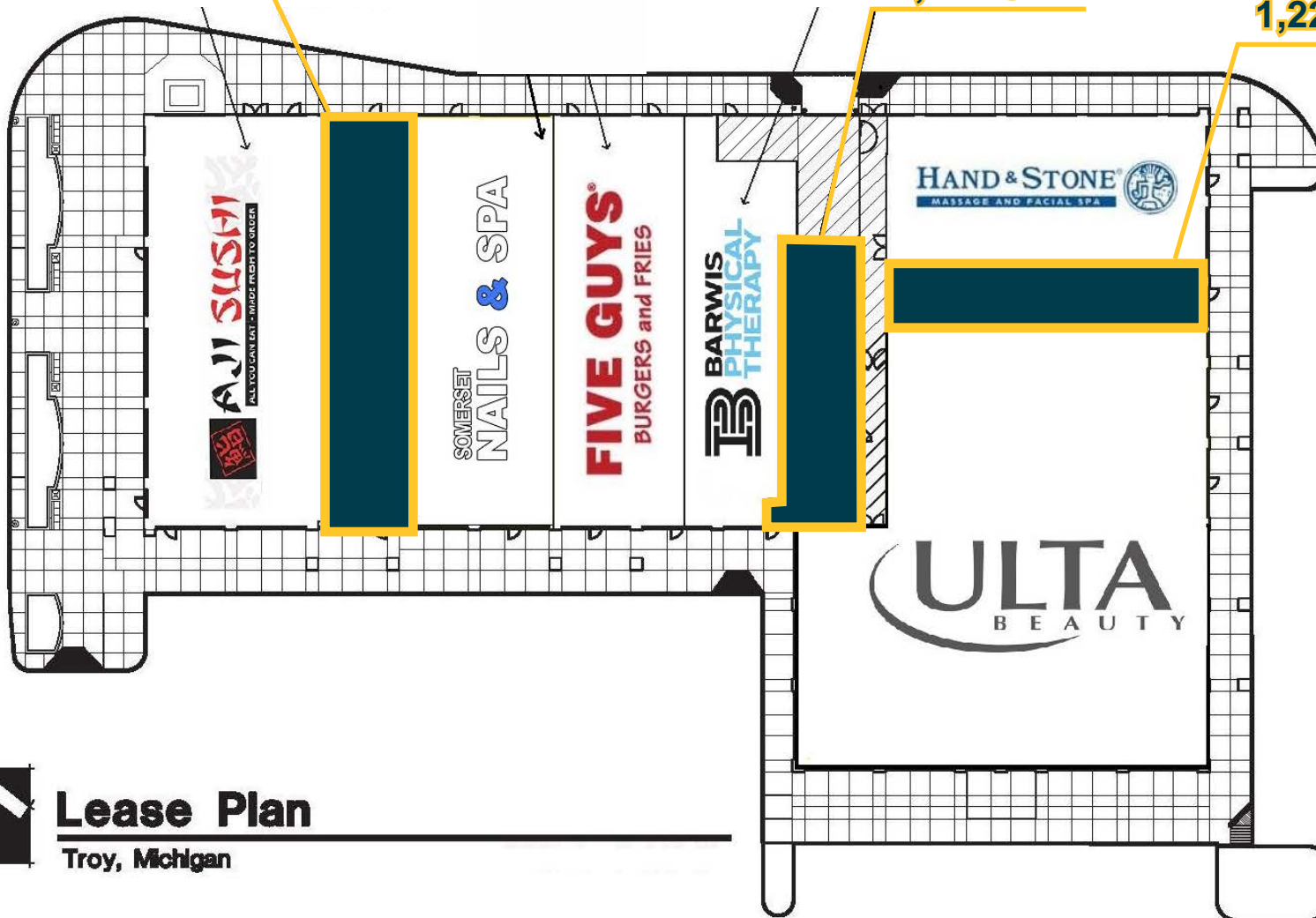
MIDTOWN SQUARE



AVAILABLE
2,251 SF

AVAILABLE
1,444 SF

AVAILABLE
1,227 SF

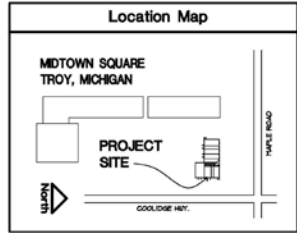
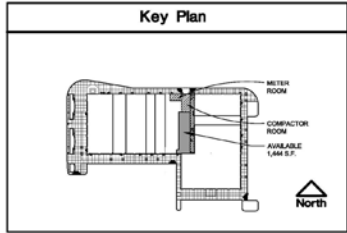


Lease Plan

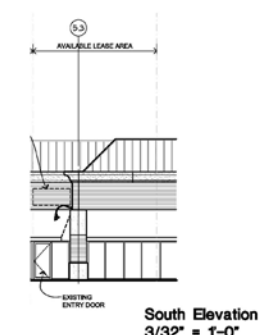
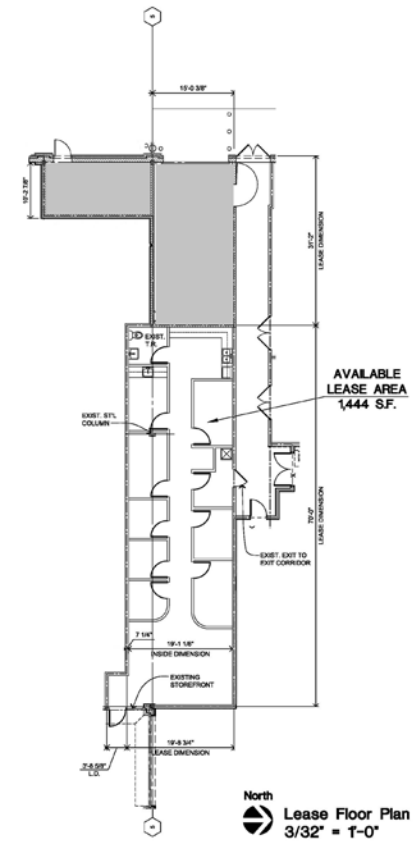
Troy, Michigan

SITE PLAN

MIDTOWN SQUARE



NOTE:
THIS DRAWING IS TO BE USED FOR LEASING PURPOSES ONLY. FIELD VERIFY ALL DIMENSIONS AND LOCATIONS FOR DOORWAYS, MASONRY OPENINGS, COLUMNS, WALLS, MECHANICAL & ELECTRICAL METERS, AND TRASH ENCLOSURES.



1,444 SF FLOOR PLAN

MIDTOWN SQUARE



MIDTOWN SQUARE



MIDTOWN SQUARE



MIDTOWN SQUARE



Eric
Birnholtz

Mid-America Real Estate -
Michigan, Inc.
T: 248.855.6800
EBirnholtz@MidAmericaGrp.com

Eric
Unatin

Mid-America Real Estate -
Michigan, Inc.
T: 248.855.6800
EUnatin@MidAmericaGrp.com



38500 Woodward Ave, Suite 100
Bloomfield Hills, Michigan 48304
248.855.6800
MidAmericaGrp.com