

# PIONEER INDUSTRIAL PARK 2000 PIONEER PARKWAY - PEORIA

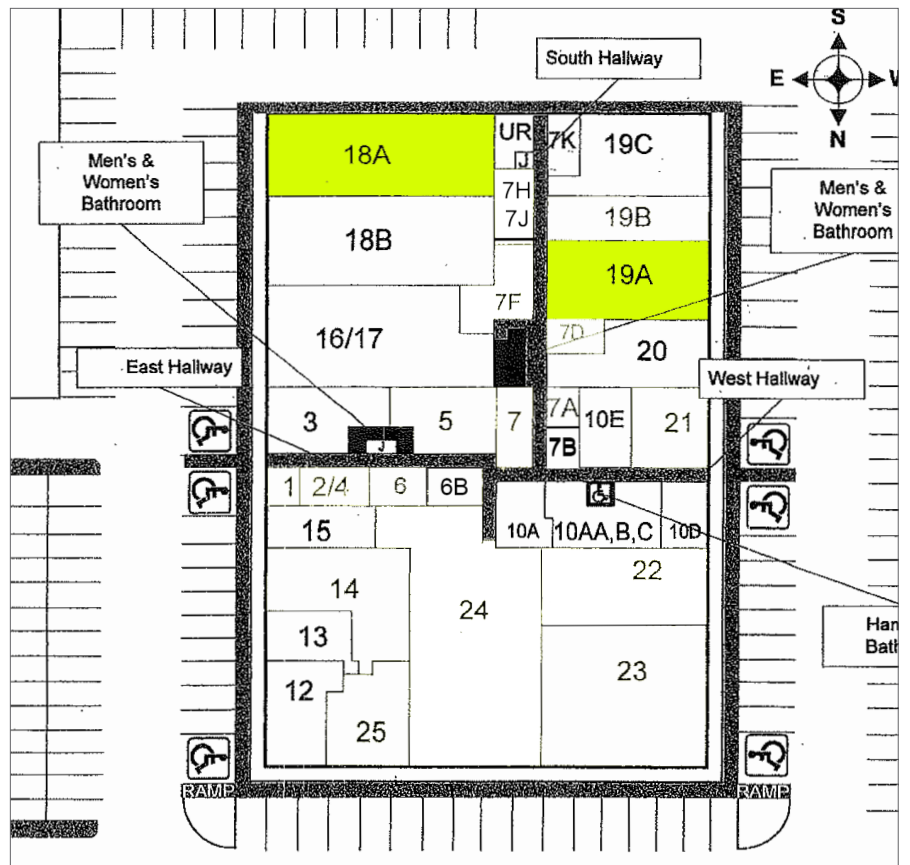


## FOR LEASE:

1,900 - 2,817 SF OFFICE SPACES  
PRICING STARTING AT \$7.00 PSF - NNN

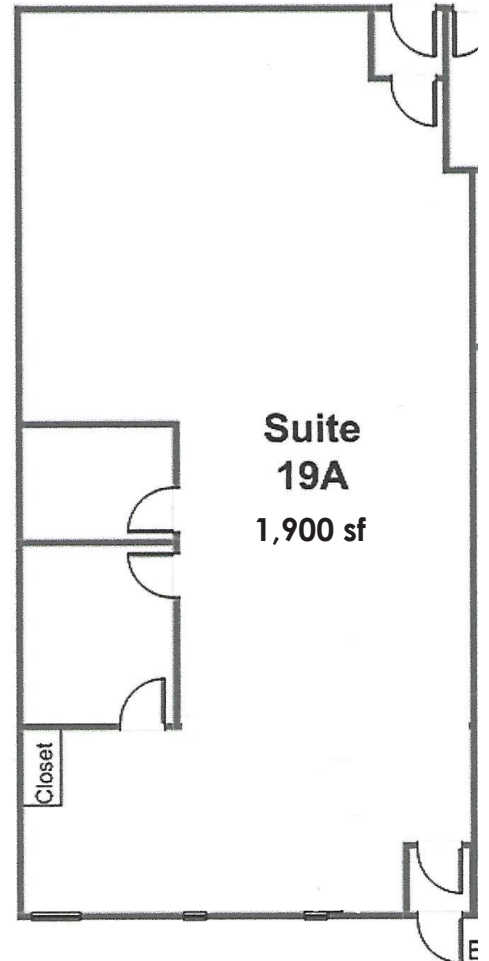
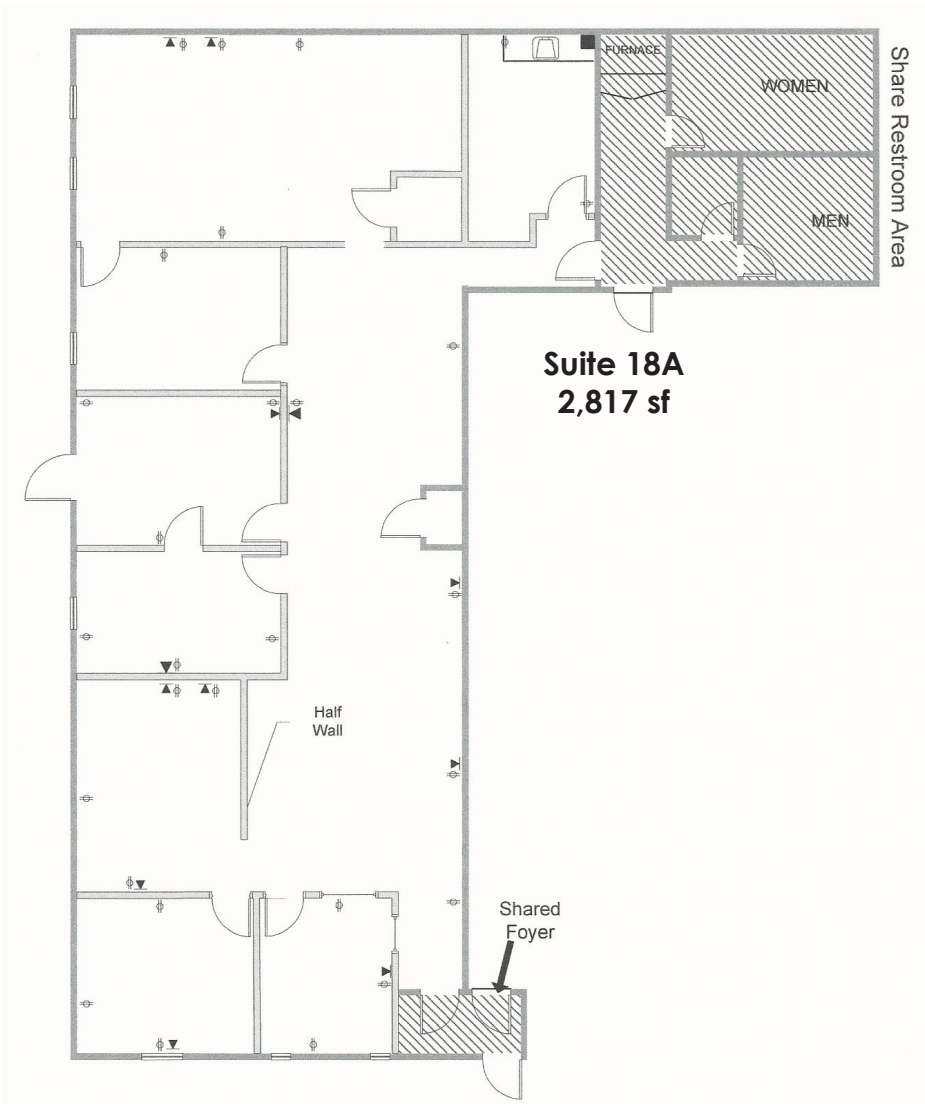
### PROPERTY FEATURES

- Office/Retail space available in Pioneer Park.
- 238-2,817 sq ft available for lease.
- Building has easy accessibility and visibility from Pioneer Parkway.
- Well maintained with local ownership nearby.
- Large onsite parking lot.
- Competitive rental rates.



# PIONEER INDUSTRIAL PARK

2000 PIONEER PARKWAY - PEORIA



# PIONEER INDUSTRIAL PARK

## 2000 PIONEER PARKWAY - PEORIA



### PROPERTY DETAILS

PROPERTY TYPE	OFFICE
SPACE SIZES	196 - 2,817 SF
PARKING	ON-SITE LOT
ZONING	COMMERCIAL
YEAR BUILT	1972

### SPACES AVAILABLE

SUITE 18A:	2,817 SF - \$7.00 PSF NNN
SUITE 19A:	1,900 SF - \$7.50 PSF NNN
BUILDING NNN = \$3.61 per SF    UTILITIES = \$1.99 per SF	



**Will Hayes**

E-MAIL: [Willhayes@josephcamper.com](mailto:Willhayes@josephcamper.com)

CELL: 309-643-0717

5001 N. University St., Peoria, IL | 309-691-5919

[WWW.JOSEPHCAMPER.COM](http://WWW.JOSEPHCAMPER.COM)